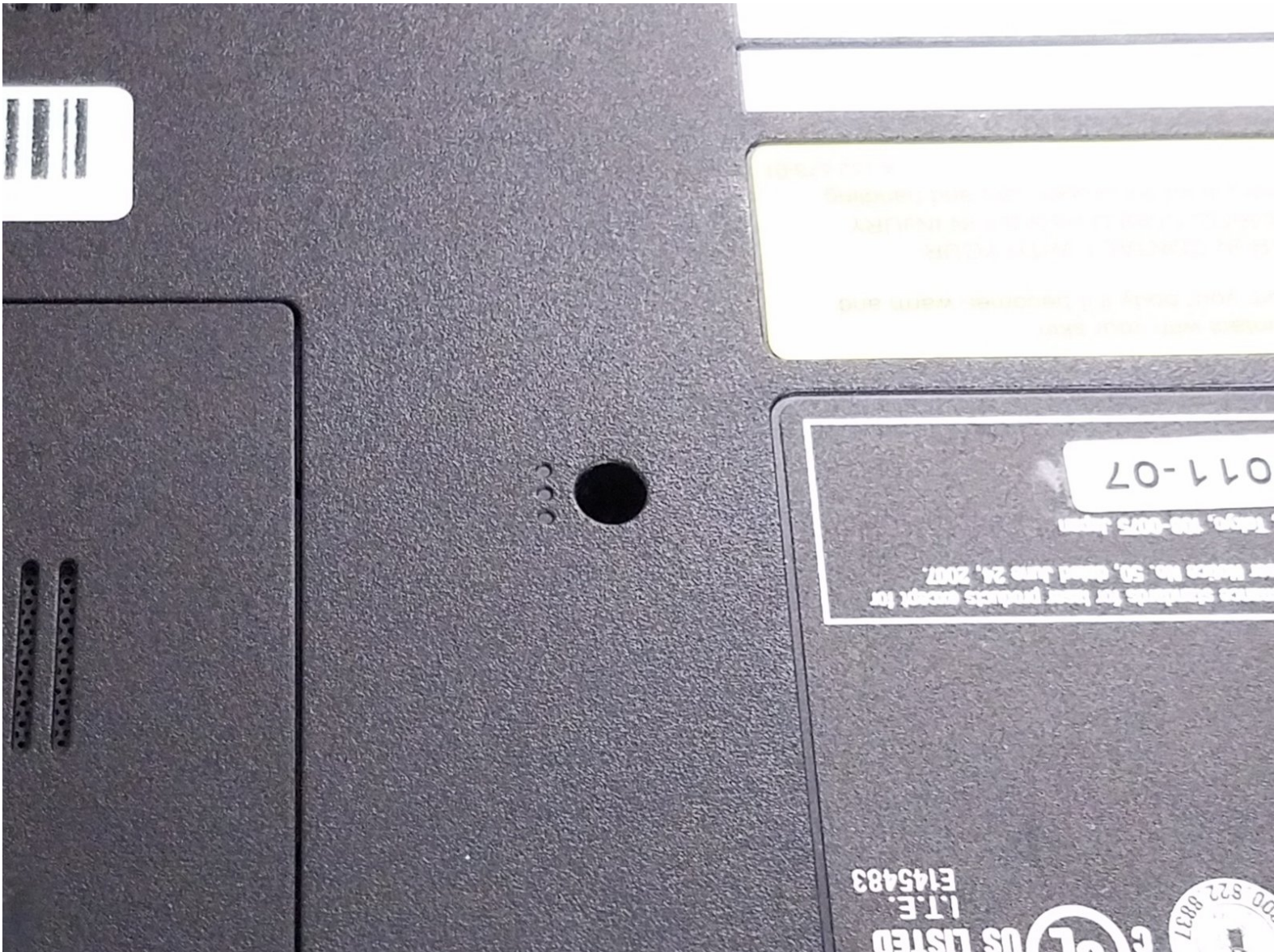




Sony Vaio VPCEL17FX Disc Drive Replacement

Replacing the disc drive is a relatively easy...

Written By: Nick Sanchez



INTRODUCTION

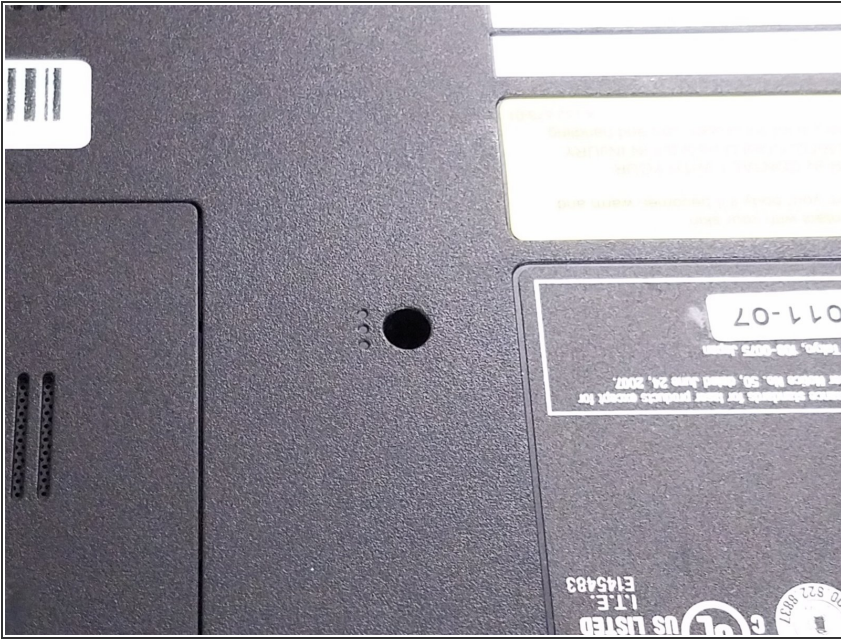
Replacing the disc drive is a relatively easy procedure, requiring only one screw to remove. The hardest part will be tracking down a replacement, which will likely be found in the secondhand market, like eBay.



TOOLS:

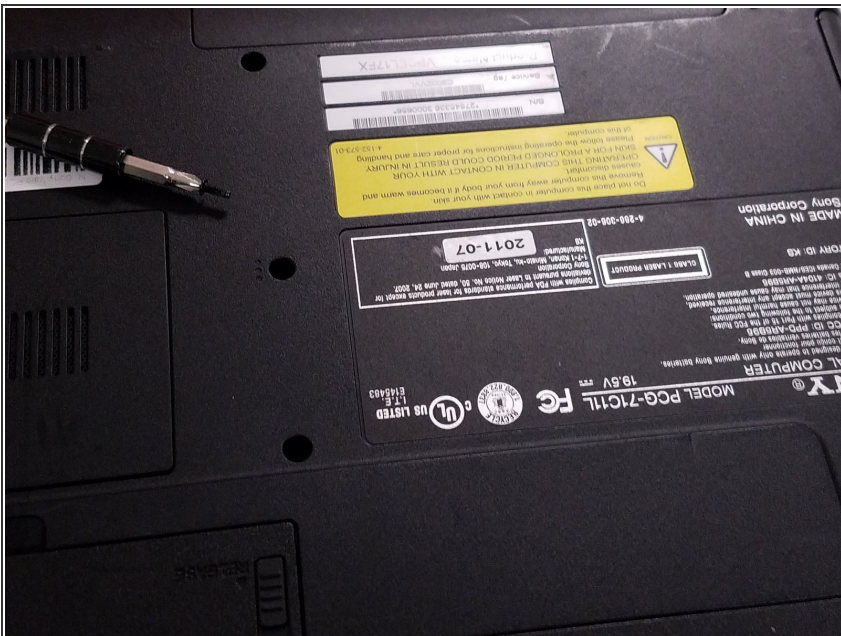
- [Phillips #00 Screwdriver](#) (1)
-

Step 1 — Disc Drive



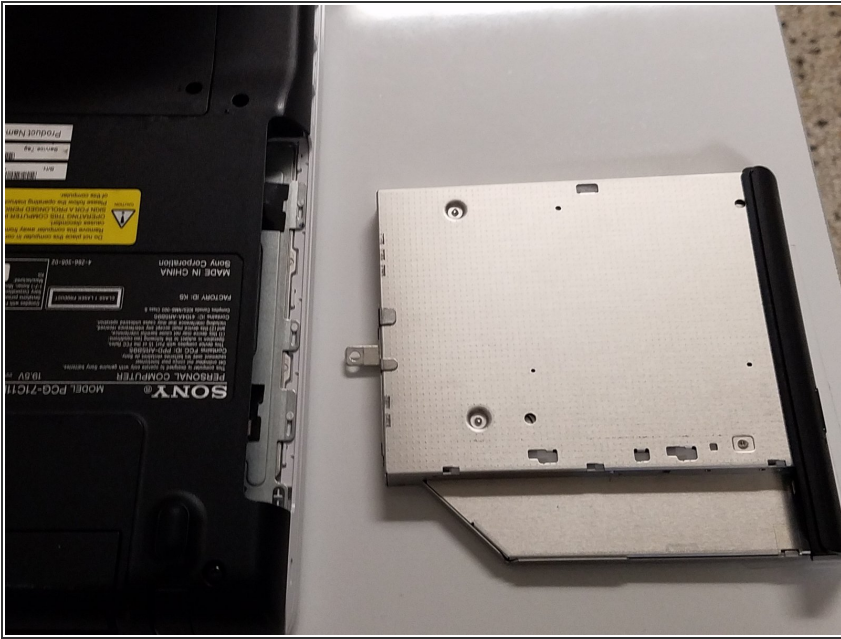
- Unscrew the screw in the hole marked by three vertical dots, shown here.
- ⓘ The screw is located on the bottom panel of the computer, next to the information panel with the production date.

Step 2



- Pull out the 0.6 mm screw, or rotate the laptop and let it fall out.
- ⓘ Be sure to not lose track of this screw, it holds the disc drive in place.

Step 3



- Gently pull the edge of the disc drive until you feel it start to come out. Pull it all the way out, and set it aside.

To reassemble your device, follow these instructions in reverse order.