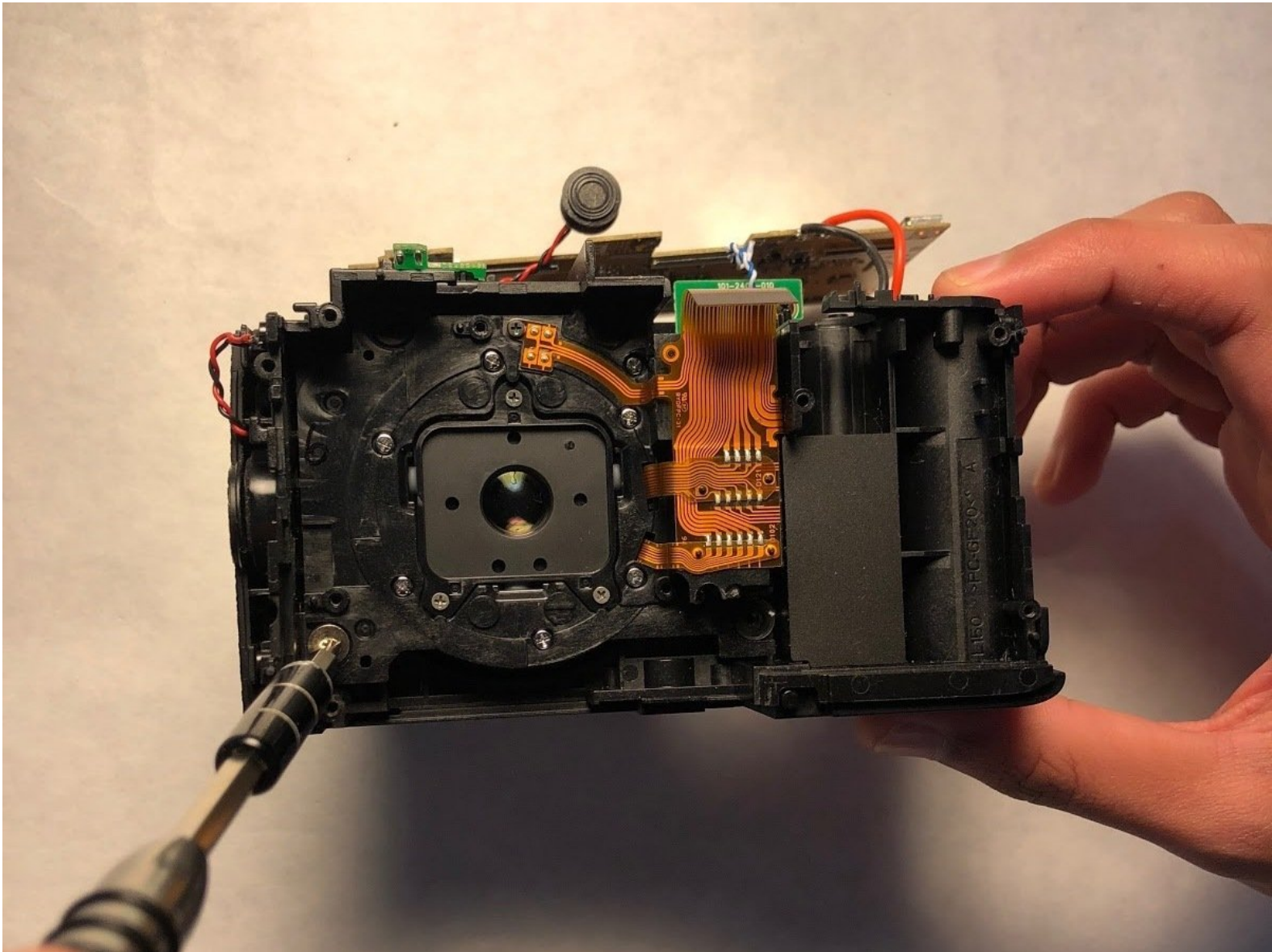




# Fujifilm FinePix S4200 Lens Replacement

Follow this guide step by step to replace the lens in the Fujifilm FinePix S4200.

Written By: Joshua Greer



## INTRODUCTION

Use this guide to replace the lense in the Fujifilm Finepix S4200. This guide requires the use of a Phillips 000 screwdriver and soldering iron. Previous soldering experience is recommended.



### TOOLS:

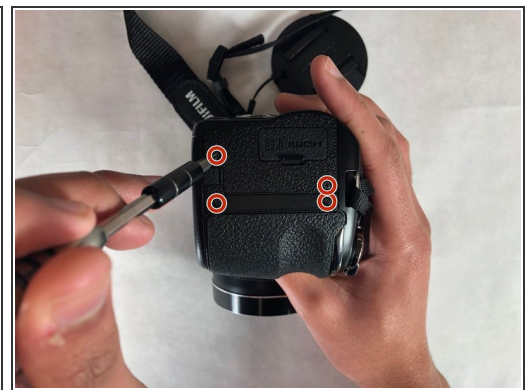
- [Soldering Iron](#) (1)
  - [Phillips #000 Screwdriver](#) (1)
-

## Step 1 — Lens



- Turn off the camera by pushing the ON/OFF switch as shown.

## Step 2



- Using a Phillips #000 screwdriver, remove all of the 4mm screws from the left, right, and bottom of the camera.

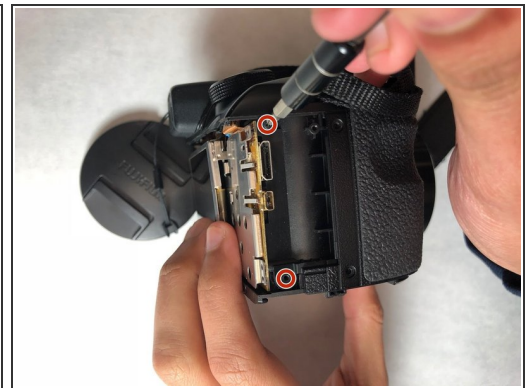
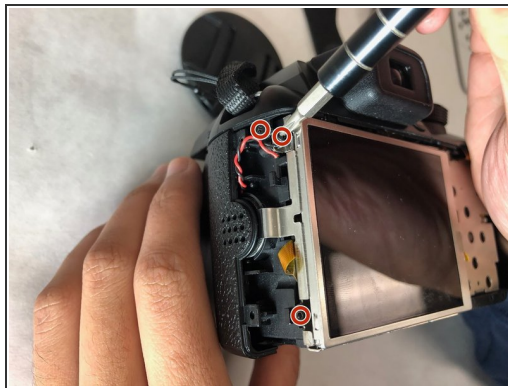
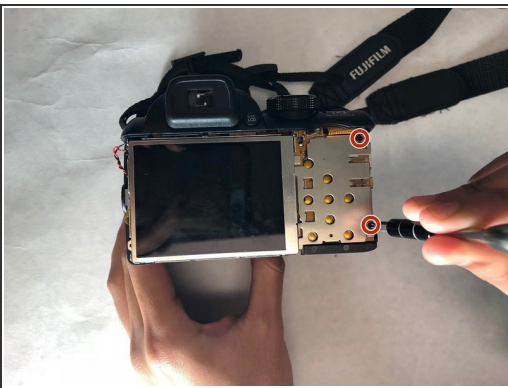


### Step 3




- Remove casing part pictured by gently pulling up until casing is fully detached.

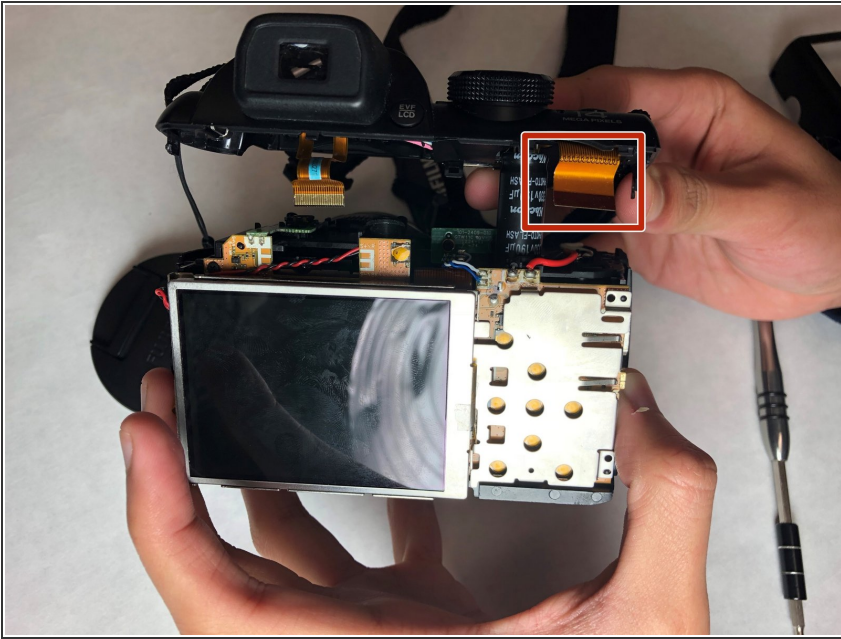
### Step 4



- Remove the 4 mm screws on the metal plate. Then remove the 4 mm screws on left side of the camera, and remove the two 4mm screws on right side.

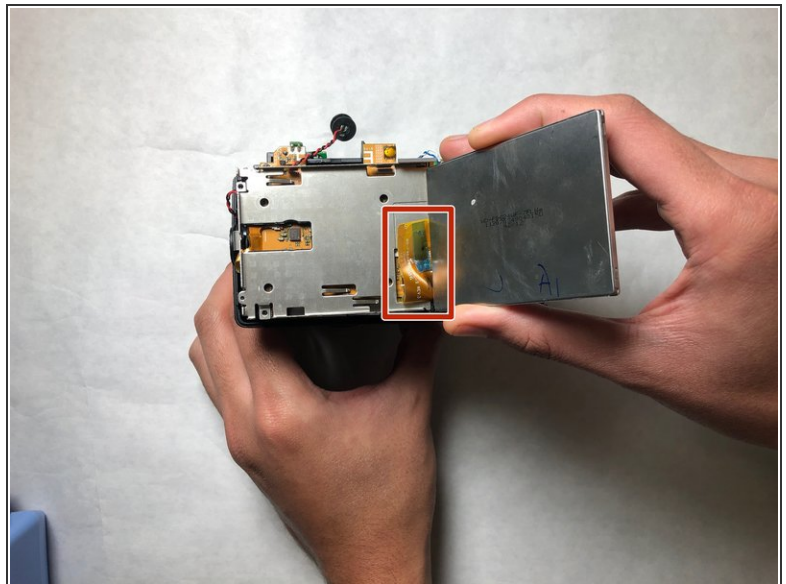
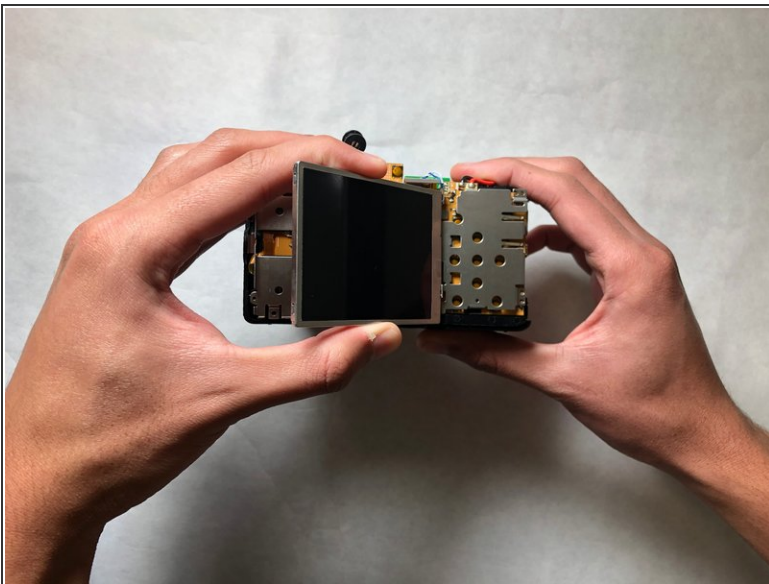
 Use the Phillips #000 to avoid stripping the screws.

## Step 5



- Remove orange ribbon cable by gently pulling on the cable until it is detached from the clamping device on the motherboard.
- Remove the top casing by pulling upwards.

## Step 6

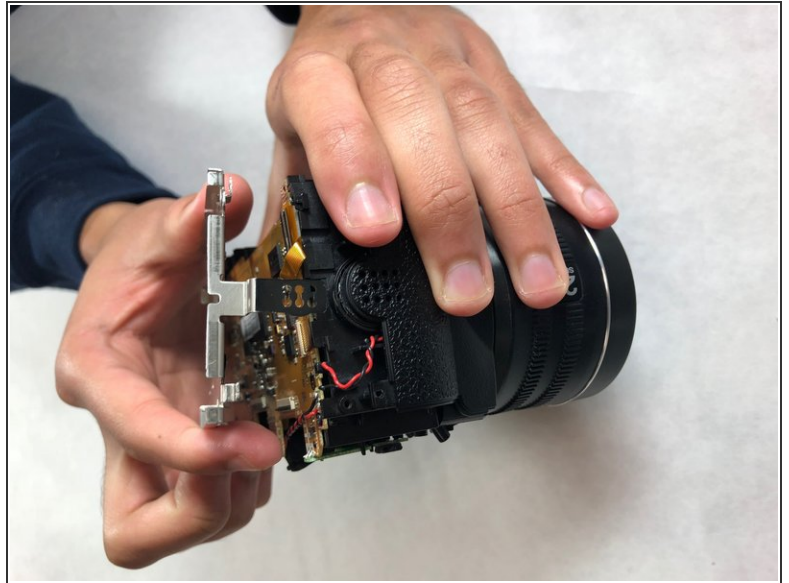
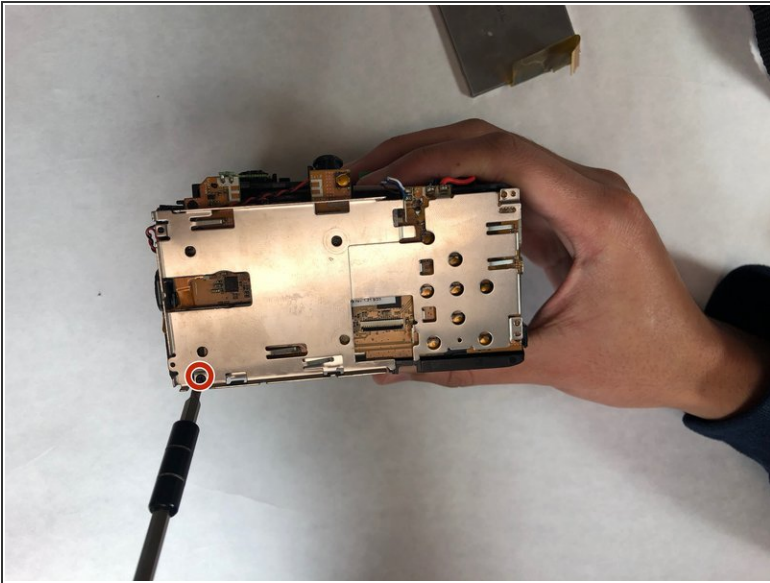


- Carefully remove the LCD screen.

⚠ Gently pull on orange tab until it is free. This orange strip is susceptible to tearing.



## Step 7




- Remove remaining 4mm screw. Detach metal plate by lifting plate upwards.

 Use the Phillips #000 screwdriver.

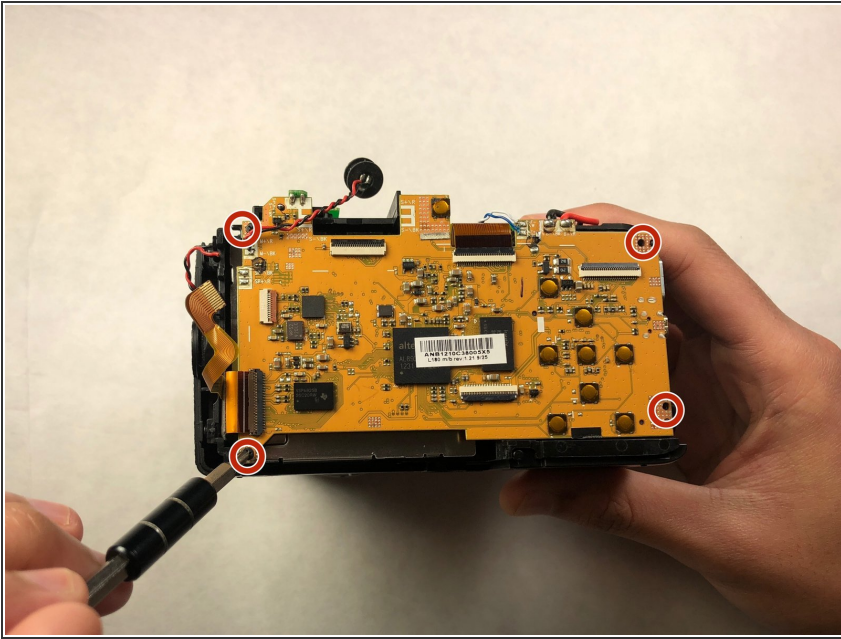
## Step 8



- Remove remaining orange tabs on motherboard by gently pulling on all tab until they are free.

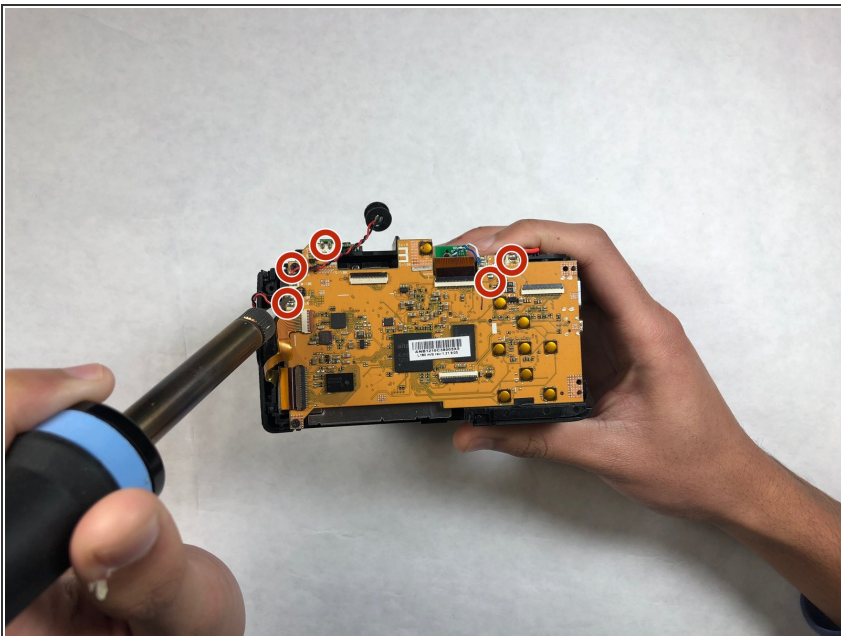
 Caution: Orange strips are susceptible to tearing.

## Step 9



- Using the Phillips #000 screwdriver, remove the 4mm screws in the corners of the motherboard.

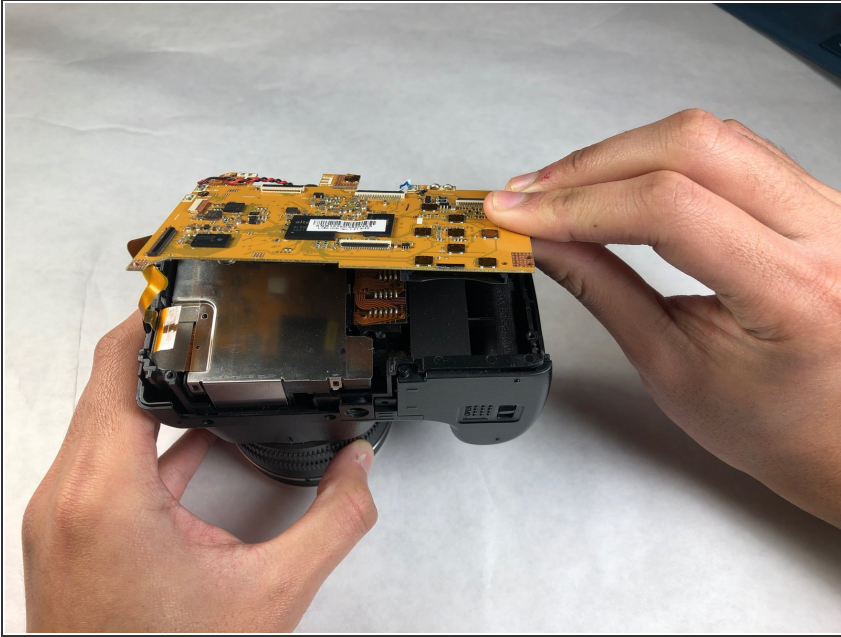
## Step 10



- Use a soldering iron to desolder the five connections shown.
- ⚠ Caution: After removing the soldered connections, they must be given ample time to cool before moving to the next step.

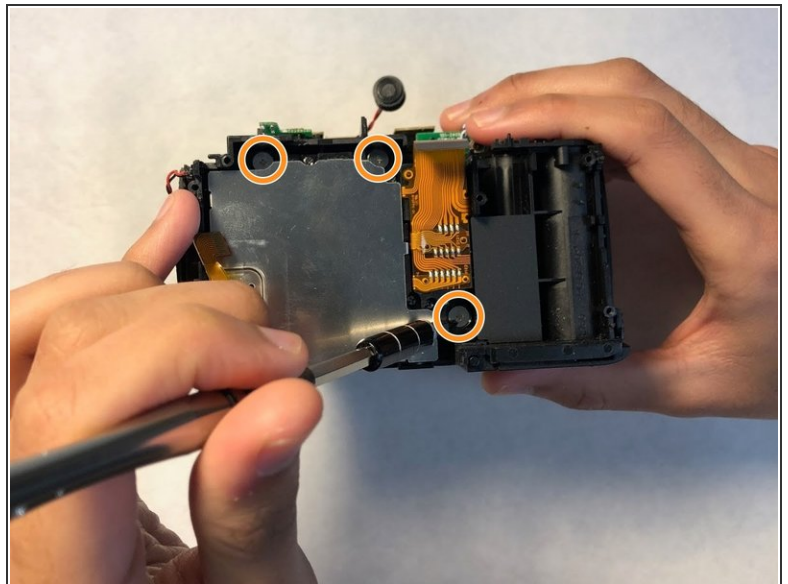
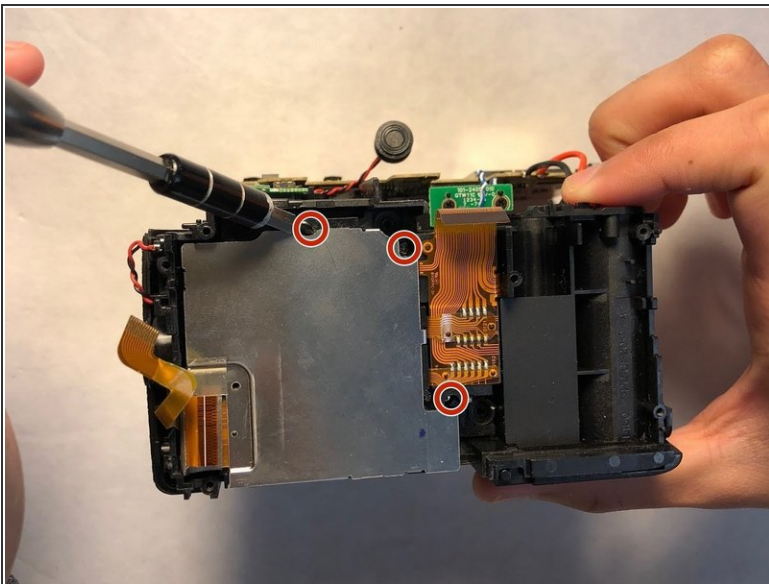


## Step 11



- Remove the motherboard. It should be free of all connections at this point and can be lifted with ease.

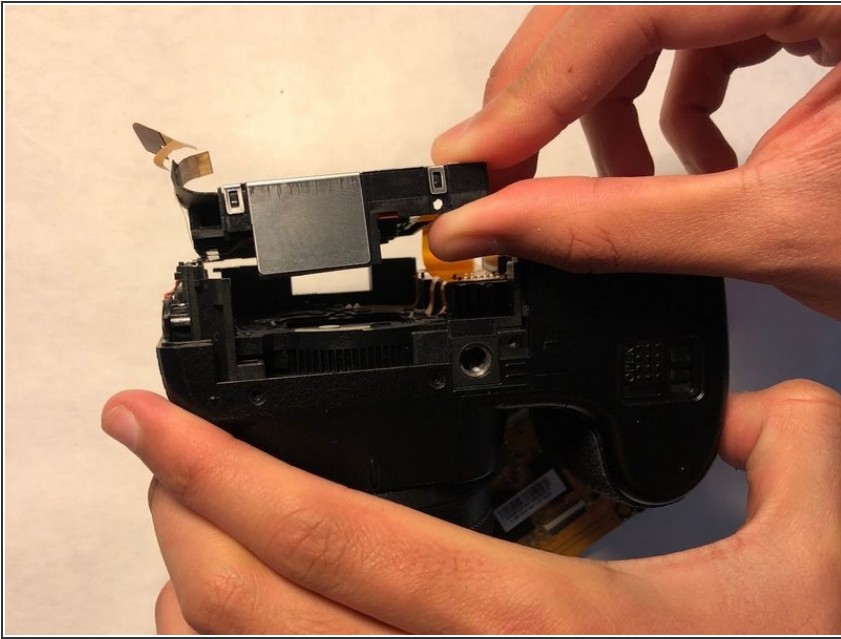
## Step 12



- Using a Phillips #000 screwdriver, remove the 4mm screws around the metal plate.
- Using a Phillips #000 screwdriver, remove the 10mm screws.



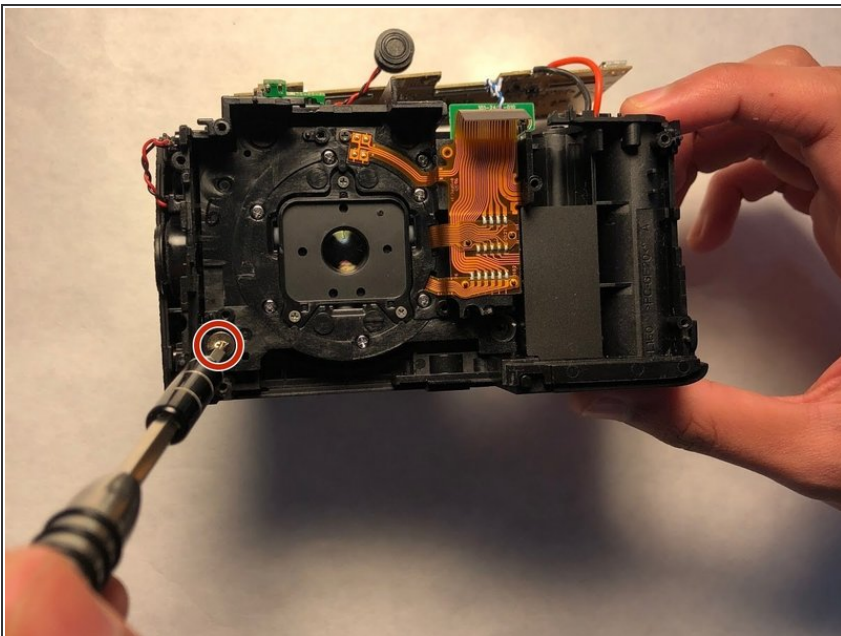
## Step 13



- Slowly lift up the metal plate and remove it from the camera.

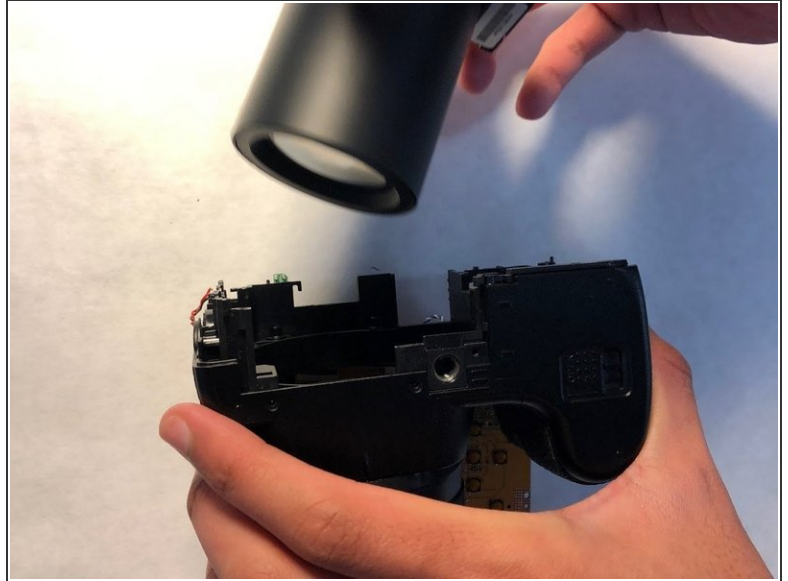
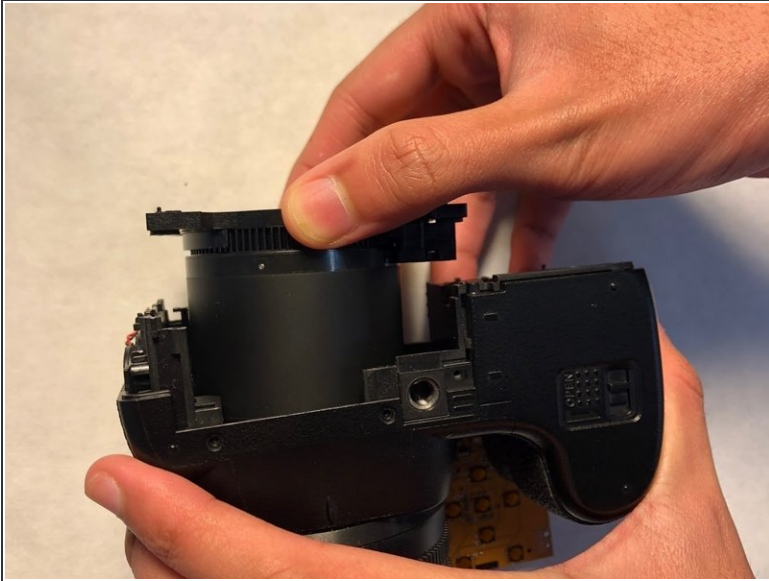
⚠ Caution: Orange strips are susceptible to tearing.

## Step 14



- Using a Phillips #000 screwdriver, remove the 10mm screw.

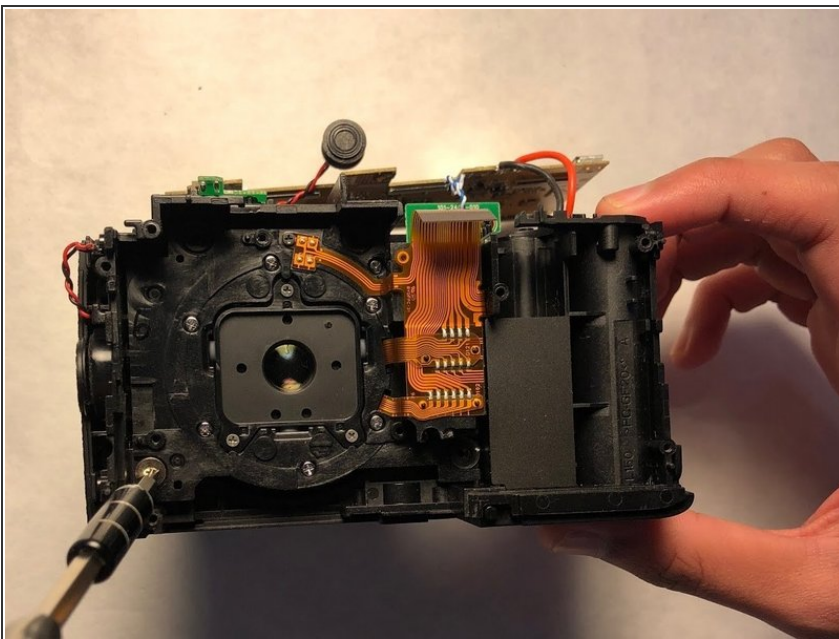
## Step 15



- Remove the inner lens.

⚠ Caution: Be careful while removing the lens.

## Step 16



- Change the broken inner lens with a new inner lens.
- Reassemble the camera.

To reassemble your device, follow these instructions in reverse order.