



HP Chromebook 11-2210nr Keyboard Replacement

This guide will show the steps needed to replace the keyboard on your HP Chromebook 11-2210nr.

Written By: Bridget Rosales



This document was generated on 2020-11-28 07:08:23 AM (MST).

INTRODUCTION

In this guide you will be able to perform the process of removing and replacing your faulty or broken keyboard. Once the removal of the keyboard is accomplished, you will be able to access other components from your HP Chromebook 11-2210nr.



TOOLS:

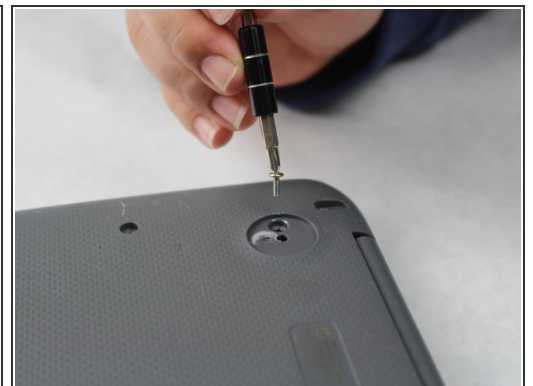
- [Heavy-Duty Spudger](#) (1)
 - [Metal Spudger](#) (1)
 - [Phillips #1 Screwdriver](#) (1)
 - [Tweezers](#) (1)
-

Step 1 — Keyboard



- Position your closed laptop face down to remove the 9 visible 6mm screws using the Phillips #1 screwdriver.

Step 2



- Using the metal spudger, remove the two rubber pads that are closer to the hinge of the laptop.
- Remove the two additional 6mm screws located beneath the rubber pads using the Phillips #1 screwdriver.
- ⓘ The two bottom rubber pads do not contain screws, but you may check if you wish to be sure.

Step 3



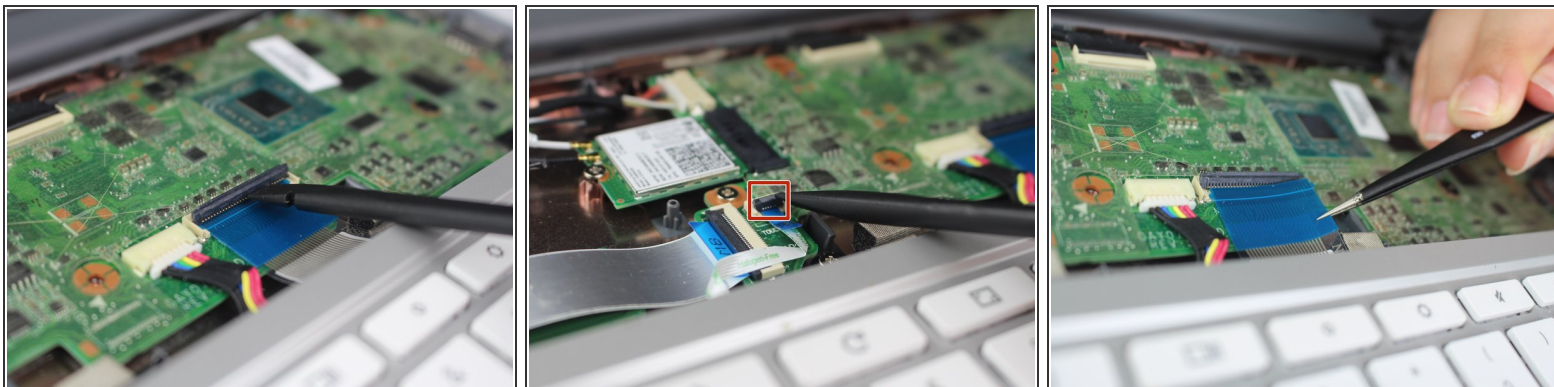
- Turn the Laptop over and with the metal spudger start to run it along the plastic seam to pry it off.
- ⓘ You will hear popping sounds when you are sliding the spudger along the device.
- ⓘ For an easier removal, start from the sides and work your way in to the corners.

Step 4



- Carefully lift off the keyboard and gently place it towards you until the two ribbon wires become visible and place the keyboard down.
 - Locate where the two ribbon wires are being held in place by two chips.
- ⚠ This does not disconnect the keyboard from the laptop just yet.

Step 5



- Using the nylon spudger, lift the plastic clasps holding the two ribbon wires up to properly disconnect the wires.

⚠ It is recommended to use the nylon spudger for this step. Any metal can damage your motherboard.

ℹ This step completely disconnects the keyboard to allow safe removal and replacement.

To reassemble your device, follow these instructions in reverse order.