



HP Chromebook 11-2210nr Battery Replacement

This guide will show you the correct way to...

Written By: Kimberly Rodriguez



INTRODUCTION

This guide will show you the correct way to remove the battery according to an HP Chromebook 11-2210nr in the need to replace a faulty or damaged battery. Once the battery is removed, access to speakers is more accessible.



TOOLS:

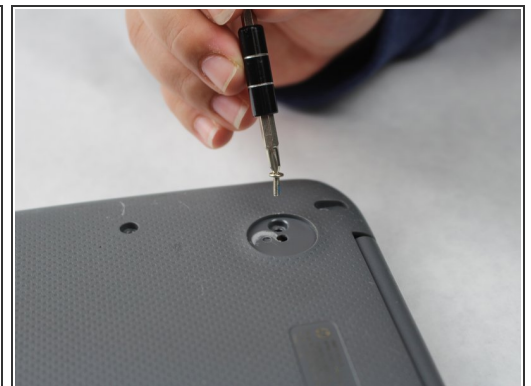
- [Phillips #1 Screwdriver](#) (1)
 - [Metal Spudger](#) (1)
 - [Spudger](#) (1)
 - [Tweezers](#) (1)
-

Step 1 — Battery



- Position your closed laptop face down to remove the 9 visible 6 mm screws using a Phillips #1 screwdriver.

Step 2



- Use a metal spudger to remove the two bottom rubber pads located closer to the hinge of the laptop.
- Remove the two additional 6 mm screws located beneath the rubber pads using the Phillips #1 screwdriver.
- ⓘ The other two bottom rubber pads do not have screws beneath them.

Step 3



- Turn the Laptop over, and with the metal spudger start to run it along the plastic seam to pry it off.
 - ⓘ You will hear popping sounds when you are sliding the spudger along the device.
 - ⓘ For an easier removal, start from the sides and work your way in to the corners.
- ⚠ Be careful when using the metal spudger as it could cause damage to the internals of the device. Don't push the spudger too deeply into the seam.

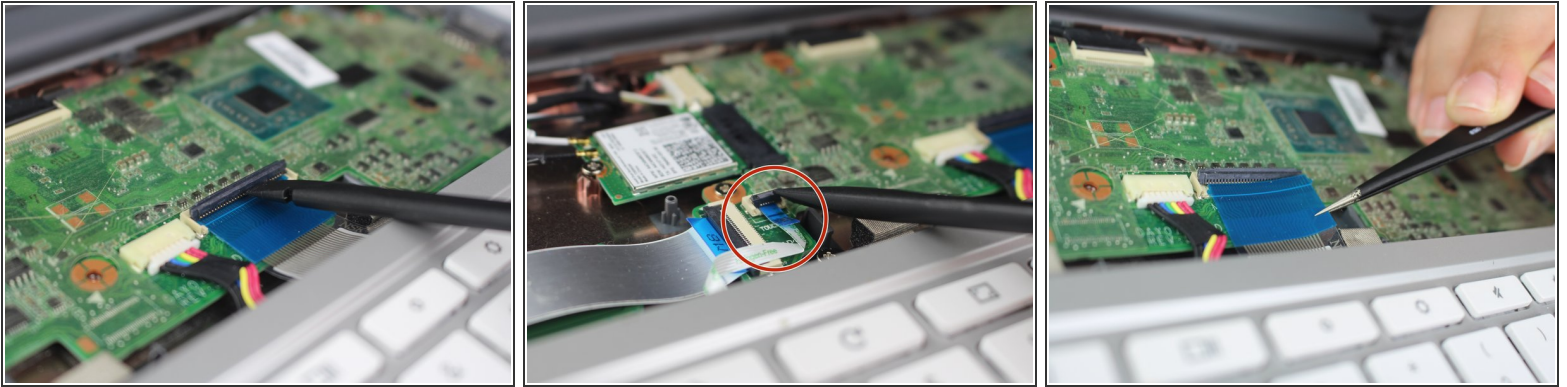
Step 4



- Carefully lift the keyboard up and gently place it towards you until the two ribbon wires become visible and place the keyboard down.
- Locate where the two ribbon wires are being held in place by two locks.

⚠ This does not disconnect the keyboard from the laptop just yet.

Step 5

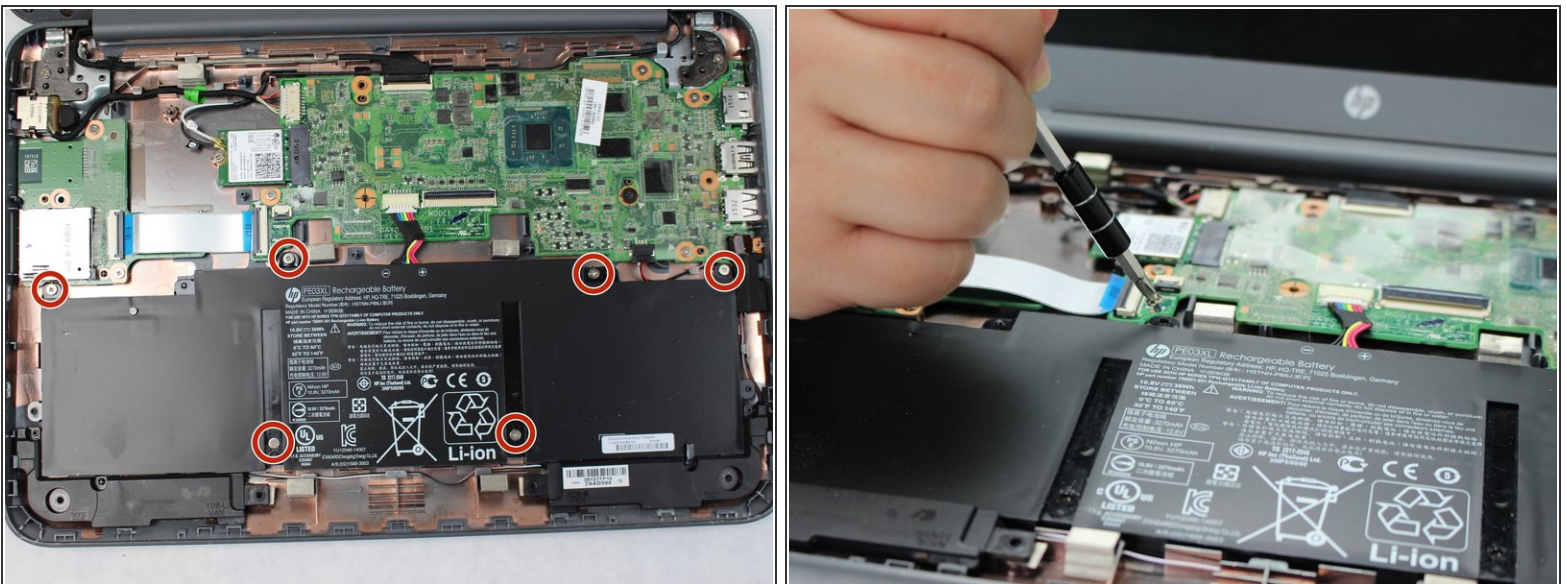


- Using the nylon spudger, push the plastic clasps holding the two ribbon wires up to properly disconnect the wires.

⚠ It is important to use the nylon spudger for this step to avoid any metal on metal circuit damage.

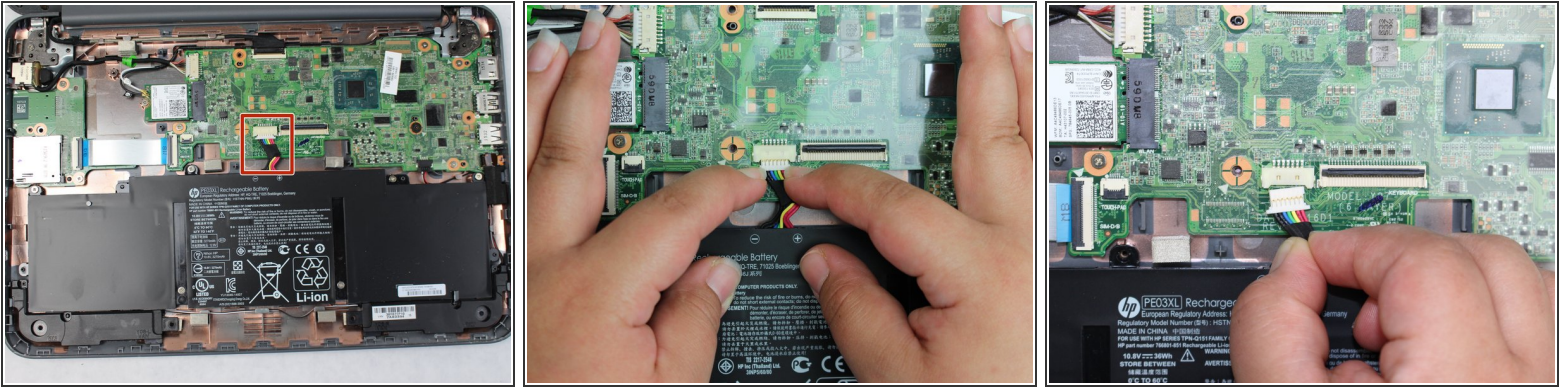
i This step completely disconnects the keyboard to allow safe removal.

Step 6



- Remove the six 4 mm screws holding the battery in place with a Phillips #1 screwdriver.

Step 7



- Carefully unplug the bundle power cable by pulling both edges towards you.

i This successfully disconnects the battery from the laptop.

Step 8



- Carefully lift the battery and remove it from the laptop.

i The battery may have an adhesive sticker attached to the bottom, if so apply more force when lifting up.

To reassemble your device, follow these instructions in reverse order.