



ASUS X502CA Wi-Fi Card Replacement

Replacing the Wi-Fi card itself is quite...

Written By: Christian Spencer



INTRODUCTION

Replacing the Wi-Fi card itself is quite simple, however, they did not make it easy to get to. To remove the Wi-Fi card you will need to remove most of the internal parts of the computer. All pre-requisite guides are listed and shown above.

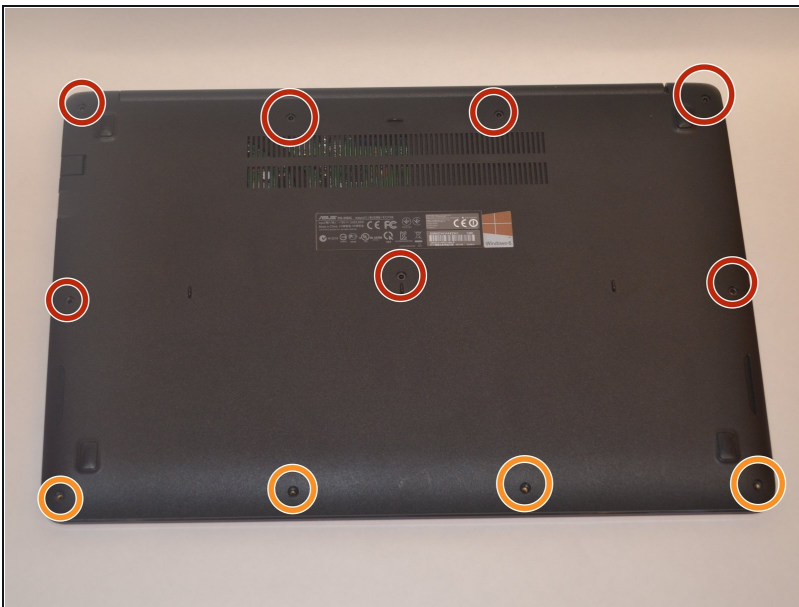
TOOLS:

[Tweezers](#) (1)
[iFixit Opening Tool](#) (1)
[Phillips #00 Screwdriver](#) (1)
[Phillips #0 Screwdriver](#) (1)

PARTS:

[Asus UL80J UL80V Wi-Fi Wireless Card](#)
(1)

Step 1 — Palm Rest with Keyboard and Touch Pad



- Use the Phillips #00 screwdriver to remove the seven 90mm screws.
- Use the Phillips #00 screwdriver to remove the four 50mm screws.

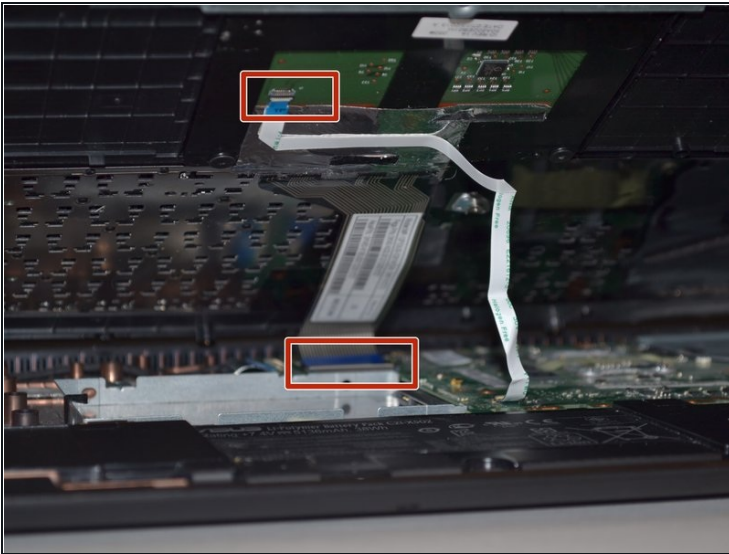
Step 2



- Next, use the plastic opening tool to carefully pop off the keyboard cover panel.

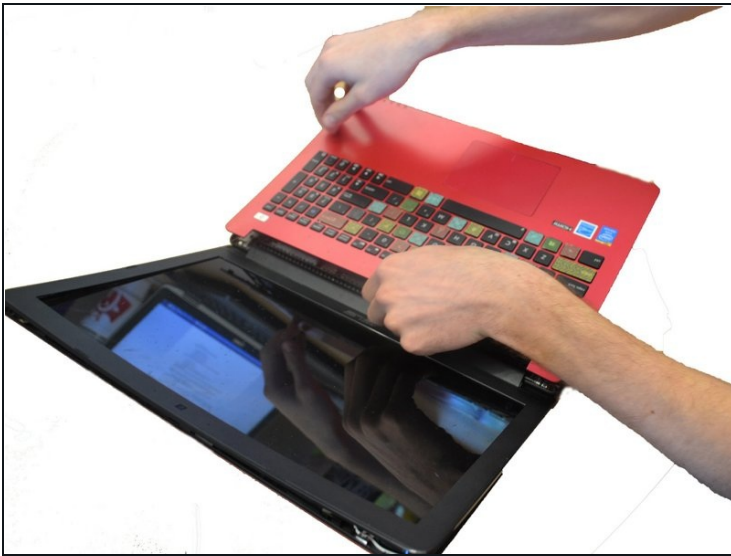
⚠ Be cautious when pulling off the cover because there are cables you will have to disconnect before completely removing the panel.

Step 3



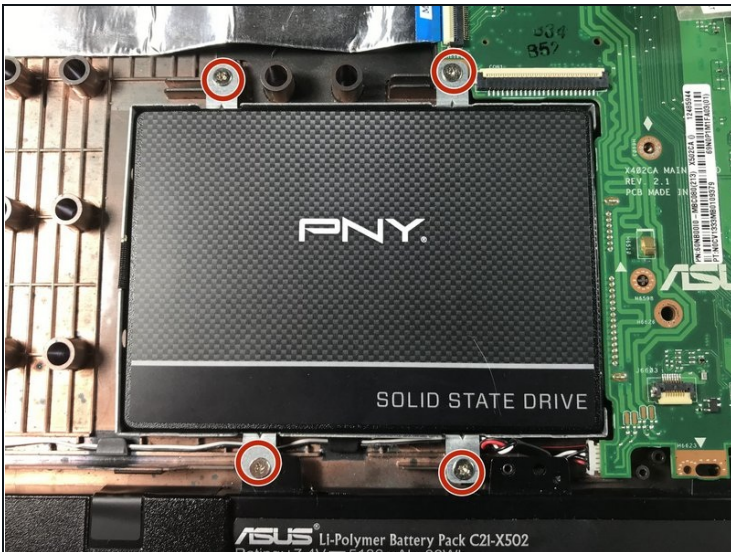
- Lift palm rest and unplug keyboard cable and touchpad cable using tweezers. After these two cables have been unplugged you can remove the keyboard cover panel.

Step 4



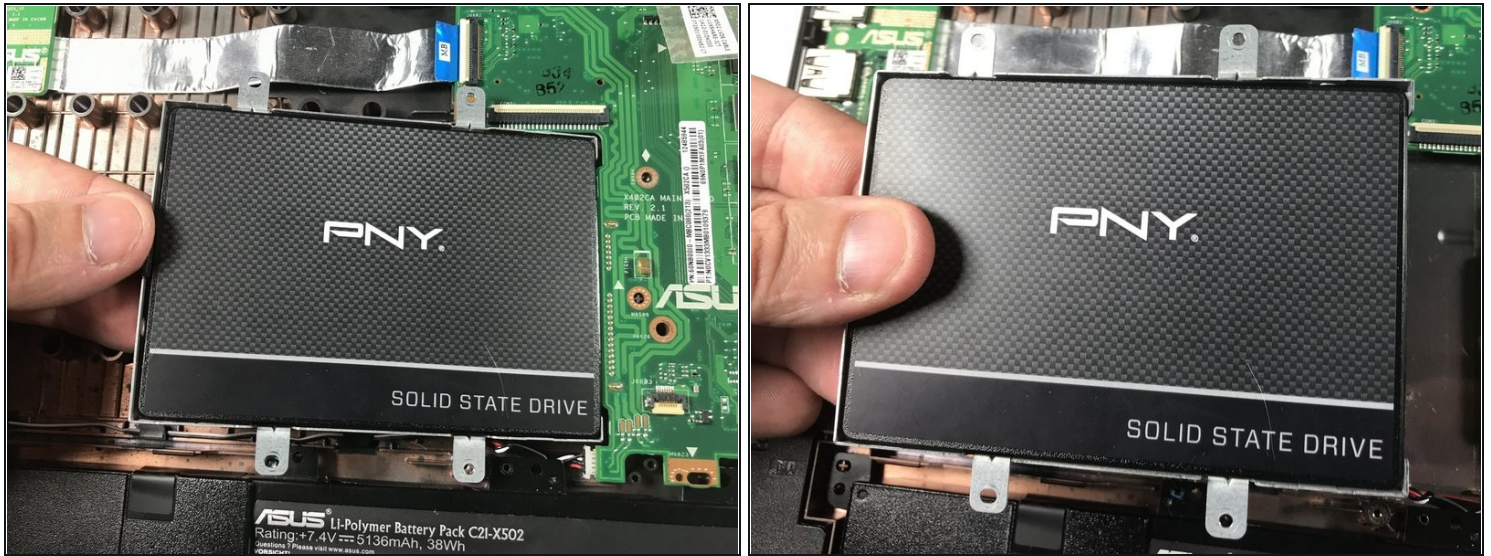
- Lift Palm Rest away.
- Replace with new palm rest.

Step 5 — Hard Drive



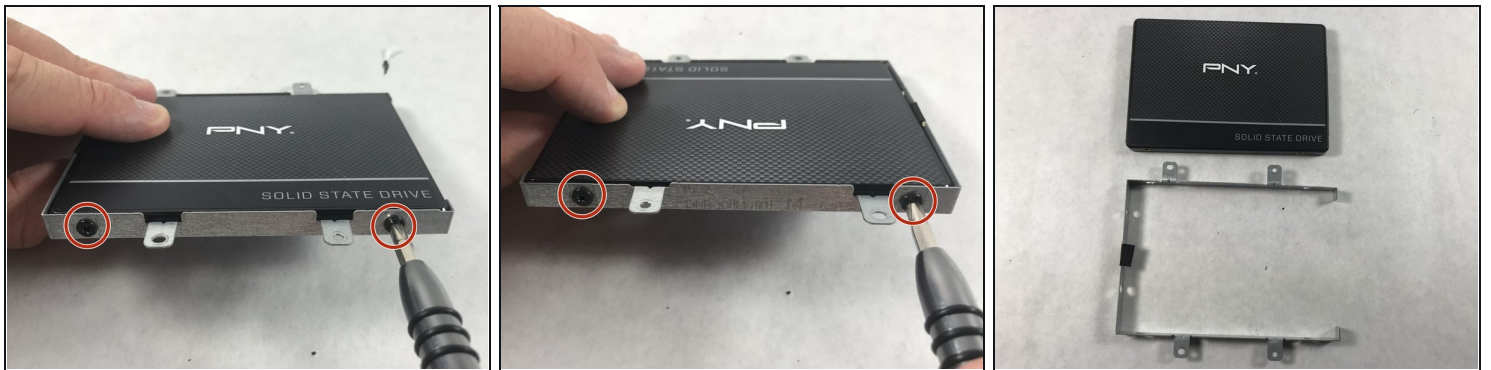
- Remove the four 5mm screws that attach the hard drive bracket using the Phillips #0 screwdriver.

Step 6



- Lift the hard drive and attached bracket up and out.

Step 7



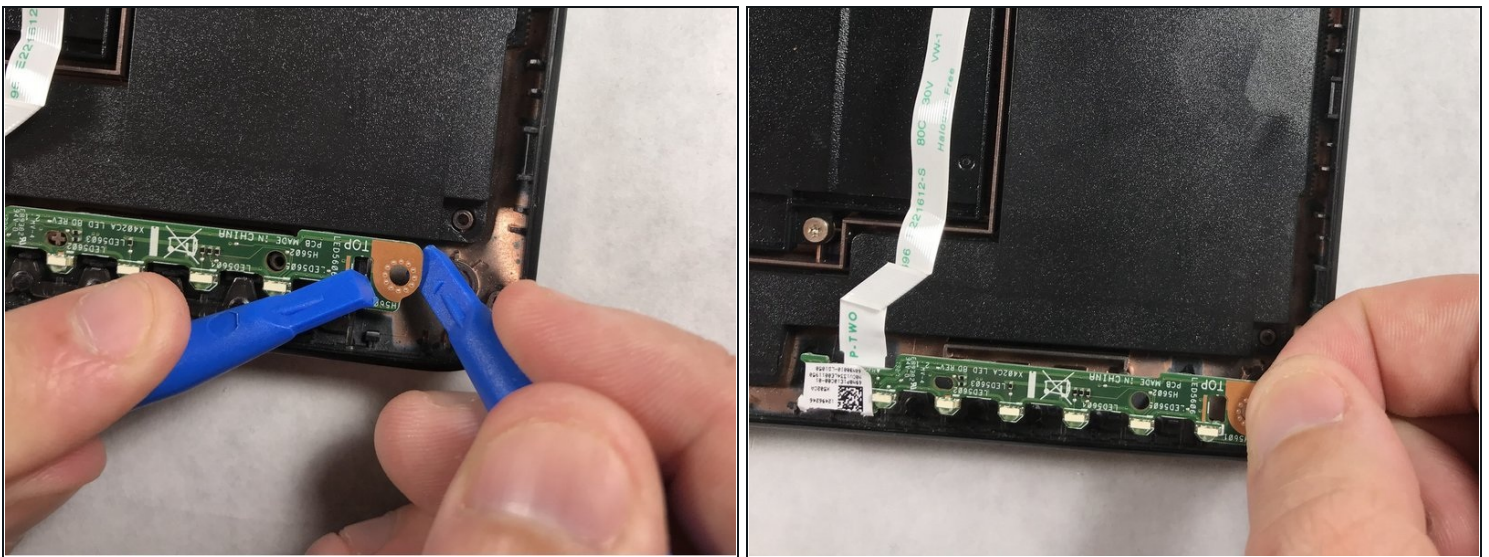
- Remove the four 5mm Phillips #0 screws attaching the bracket to the hard drive.
① There are 2 screws on each side.

Step 8 — LED Board



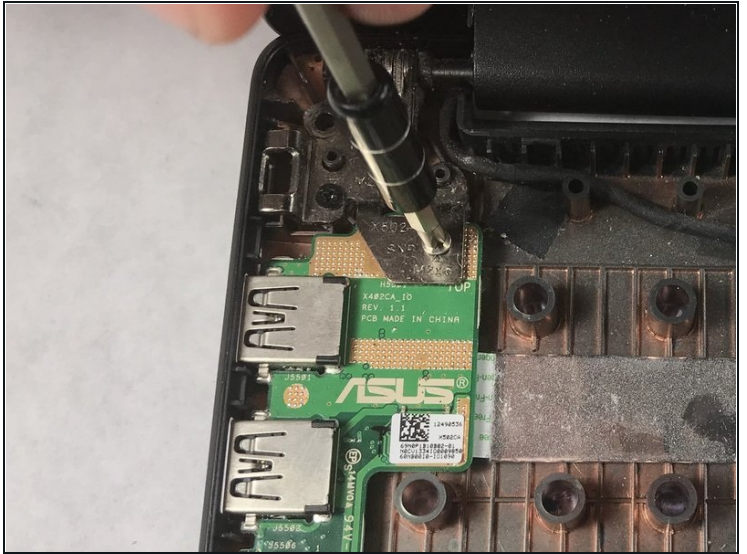
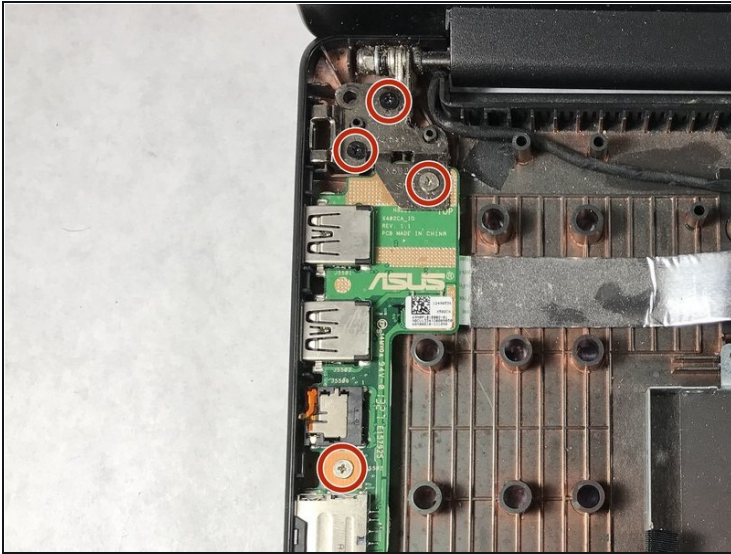
- Use the plastic opening tool to flip up the small clamp and pull out the ribbon cable.

Step 9



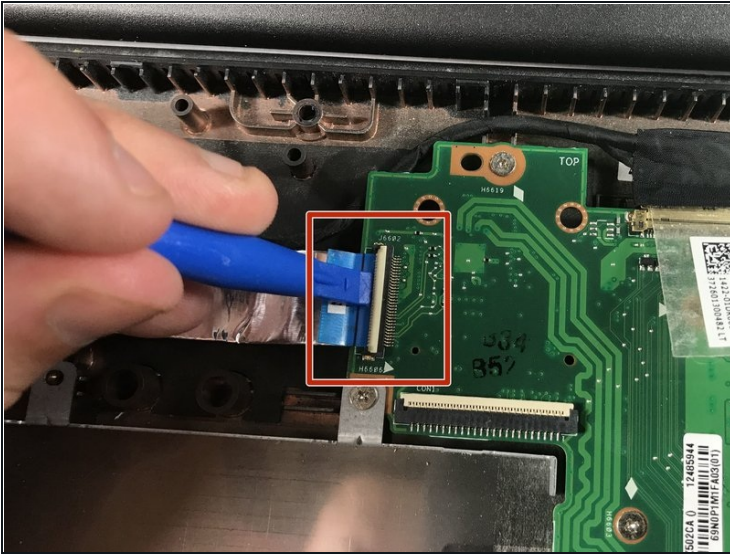
- Use 1 or 2 plastic opening tools to push down the small black plastic clips.
- Pull the board up and out.

Step 10 — Left I/O Board



- Locate the I/O board on the left of the computer. Using the Phillips #0 screwdriver, unscrew the three 5mm screws to unhinge the screen, which will free the board allowing it to be removed and replaced.
- ⚠ Be careful with handling your computer while one side is unhinged; mishandling or over pressuring the other hinge could cause damage to it or the screen.

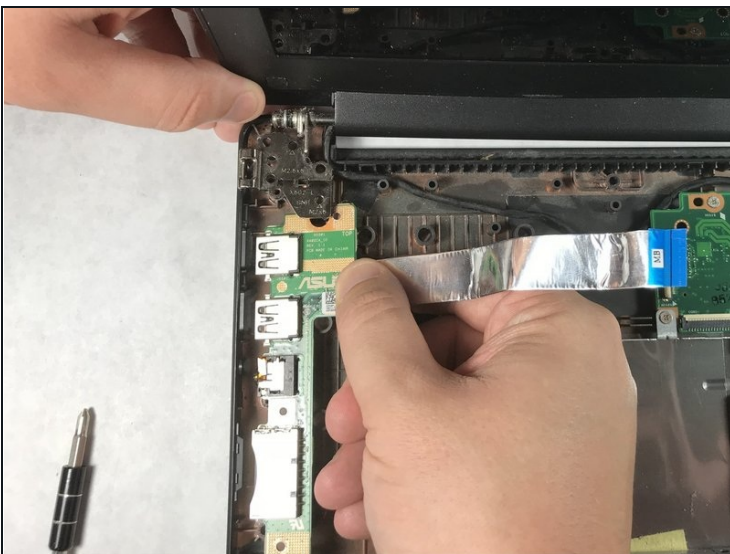
Step 11



- Unplug the power strip connecting to the motherboard with your fingers or plastic opening tool.

⚠ Make sure the power strip is disconnected before pulling the board out.

Step 12



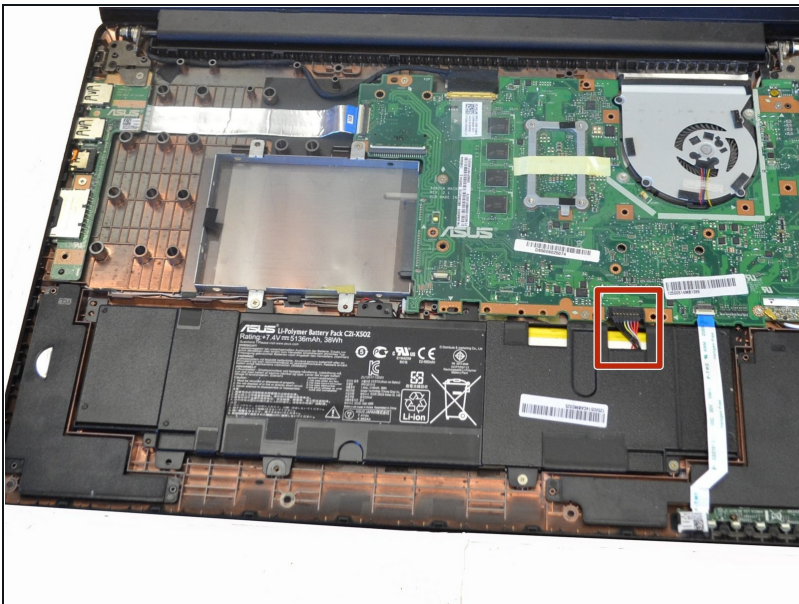
- Slightly pull the unhinged screen up to free the board and remove it.

Step 13 — Battery



- Next, locate the battery in the front of laptop (closest to you).

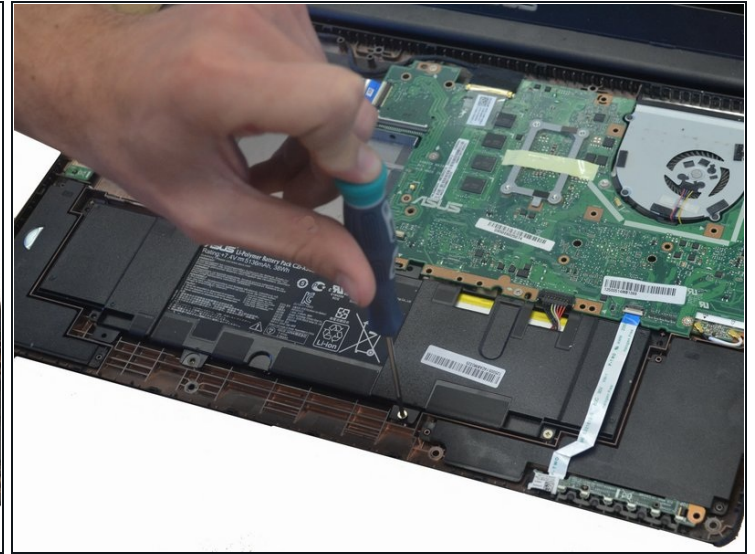
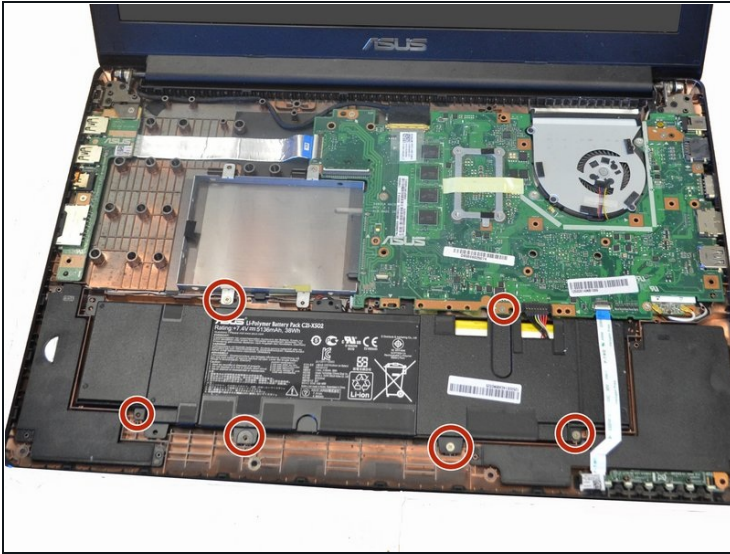
Step 14



- Unplug the battery from the laptop in the upper right hand corner of the battery using tweezers.

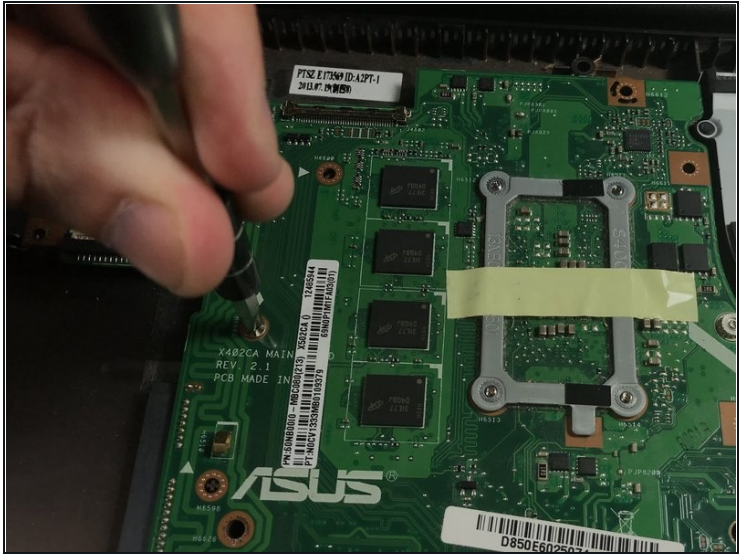
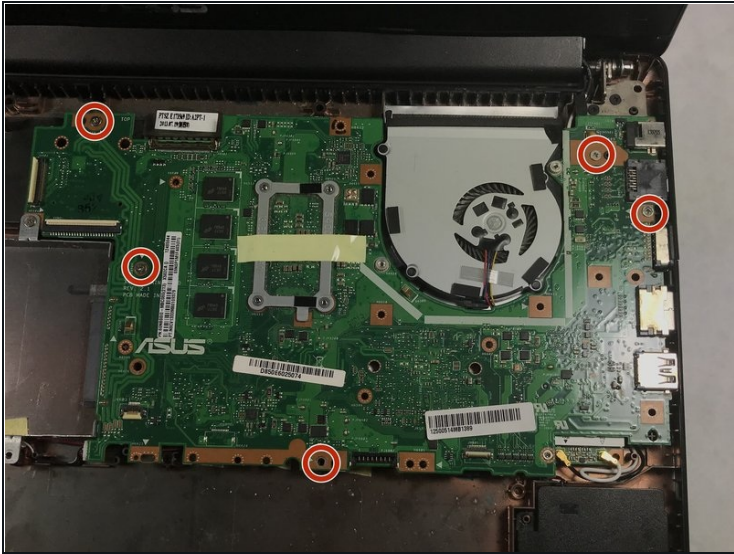
⚠ If battery is not unplugged, motherboard may shock you.

Step 15



- Use the Phillips #00 Screwdriver to carefully remove the 6 screws holding the battery in place.
- Once you have removed all six screws carefully lift the battery out and dispose.
- ① Each screw is 50 mm in length and 15 mm in diameter.

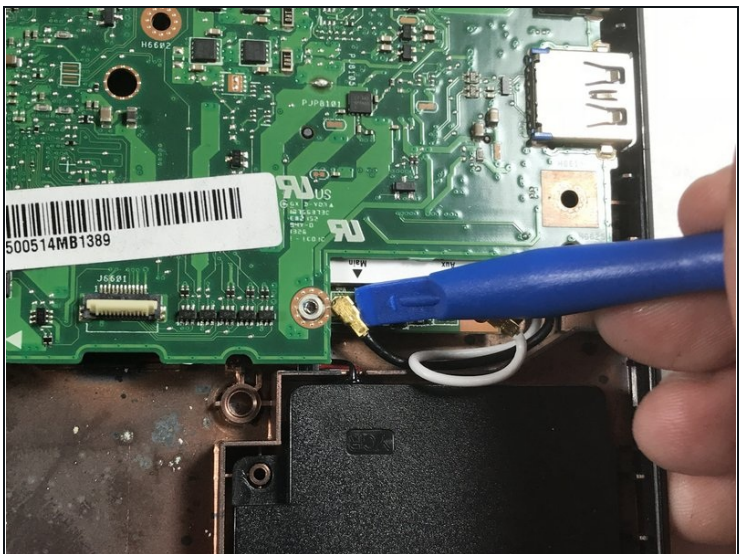
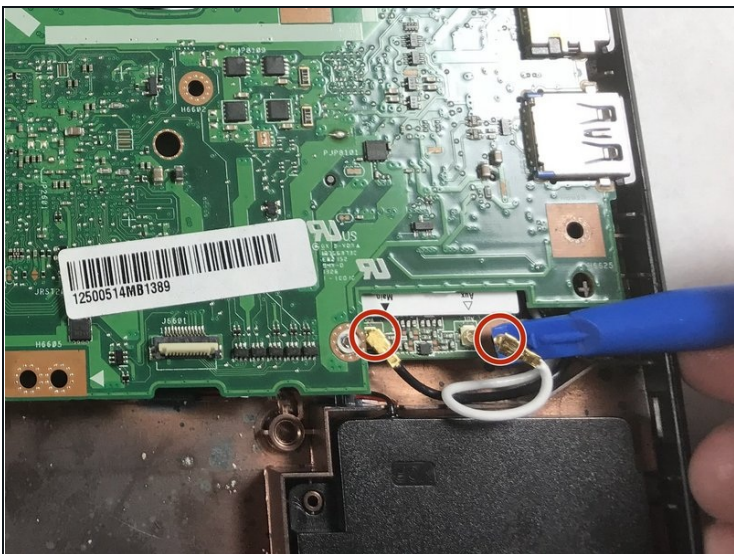
Step 16 — Motherboard



- Use the Phillips #0 screwdriver to remove the last five 5mm screws holding the motherboard down.

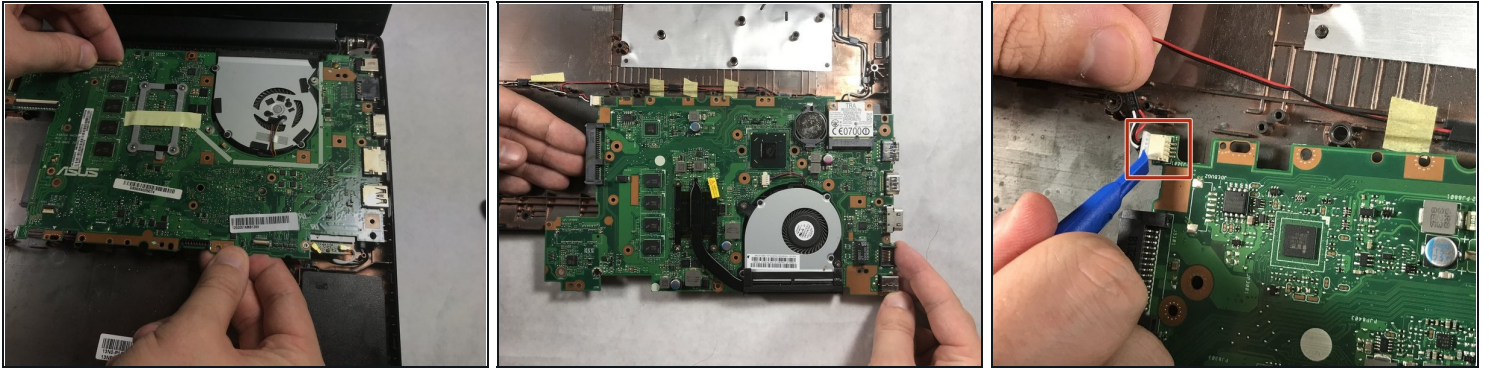
ⓘ These screws will be marked by diamonds next to the screw holes.

Step 17



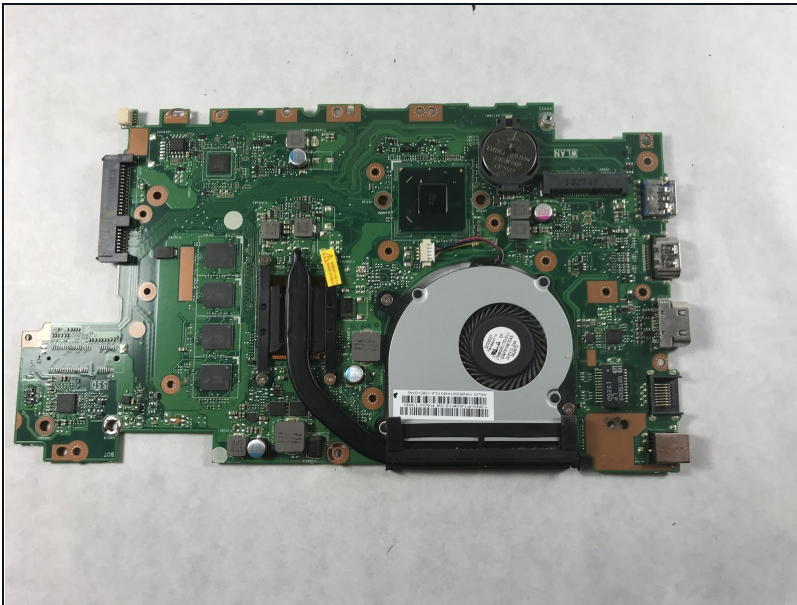
- Use the plastic opening tool to unclip the two wires from the Wi-Fi card that are connected to the motherboard.

Step 18



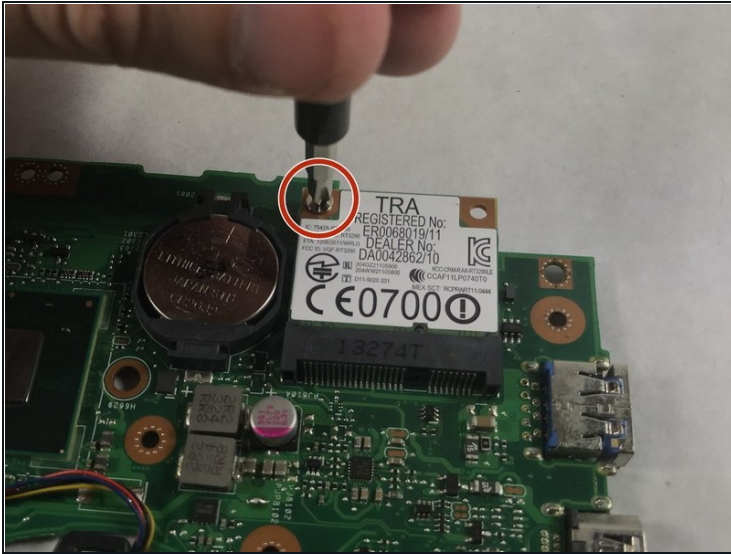
- Flip the motherboard over and use the plastic opening tool to unplug the black and red wires from the motherboard.

Step 19



- Pull up on the motherboard and take it out.

Step 20 — Wi-Fi Card



- Take out the 2.5mm PH #0 screw located on the top of the Wi-Fi card.
- Lift the card up and pull it out.

To reassemble your device, follow these instructions in reverse order.