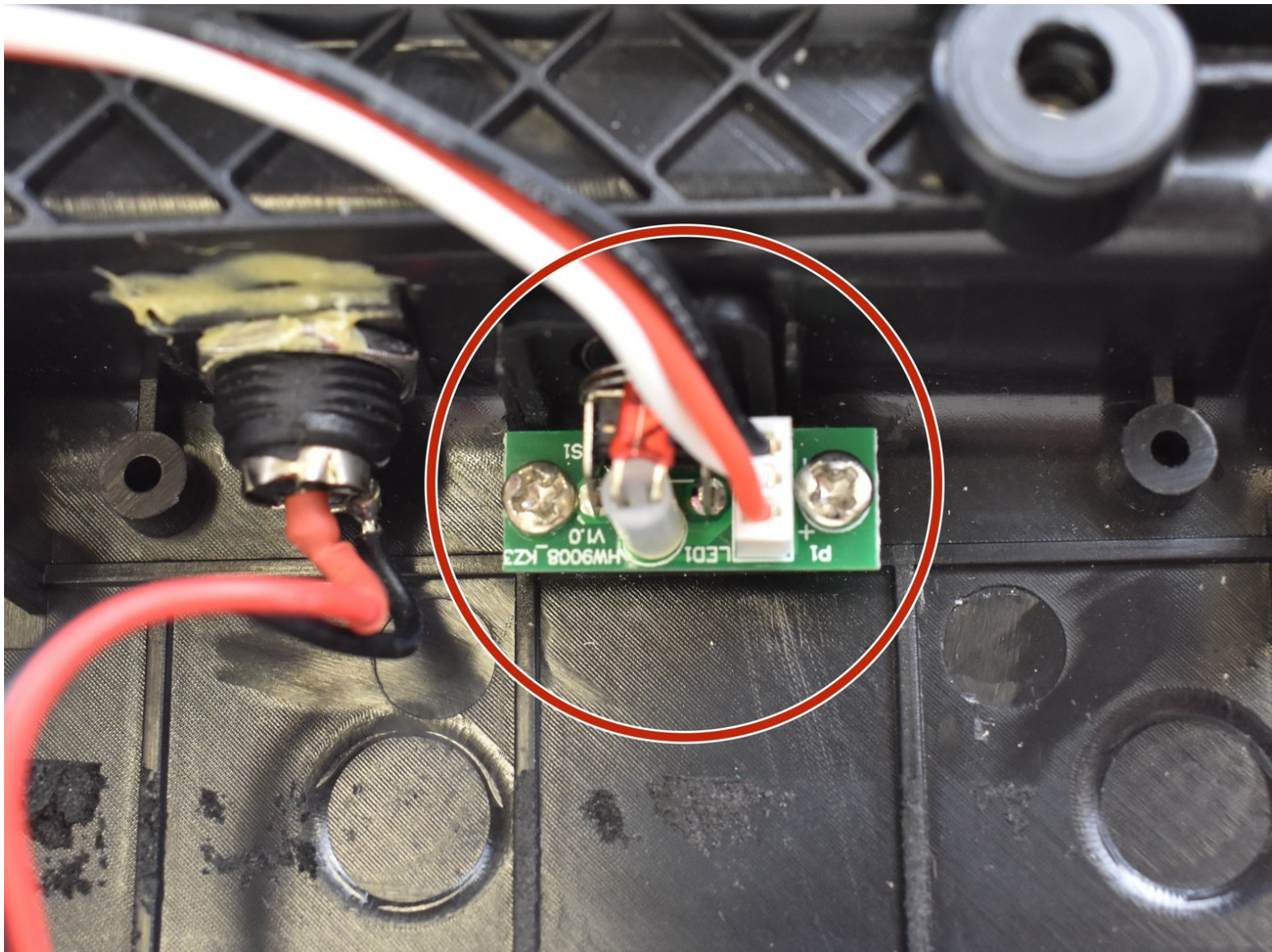




Hover-1 Coast Power Button Spring Replacement

This guide will show you how to replace the power button spring in your Hover-1 Coast if the button is not responding.

Written By: Jace Oppenlander



INTRODUCTION

If your Hover-1 Coast board's power button won't press you likely have an issue with the button spring. This spring allows the button to be compressed, sending a signal to the battery to turn on and power the board.

This will be a moderately difficult task to complete as you will use tools that not everyone probably has but are common for most electronics repairs.

Provided to you, is a list of detailed instructions on how to properly, and safely replace the spring. For parts please go [++here++](#) to look at how to purchase new parts. For any inquiries, please take a look at the operator's manual link [++here++](#).



TOOLS:

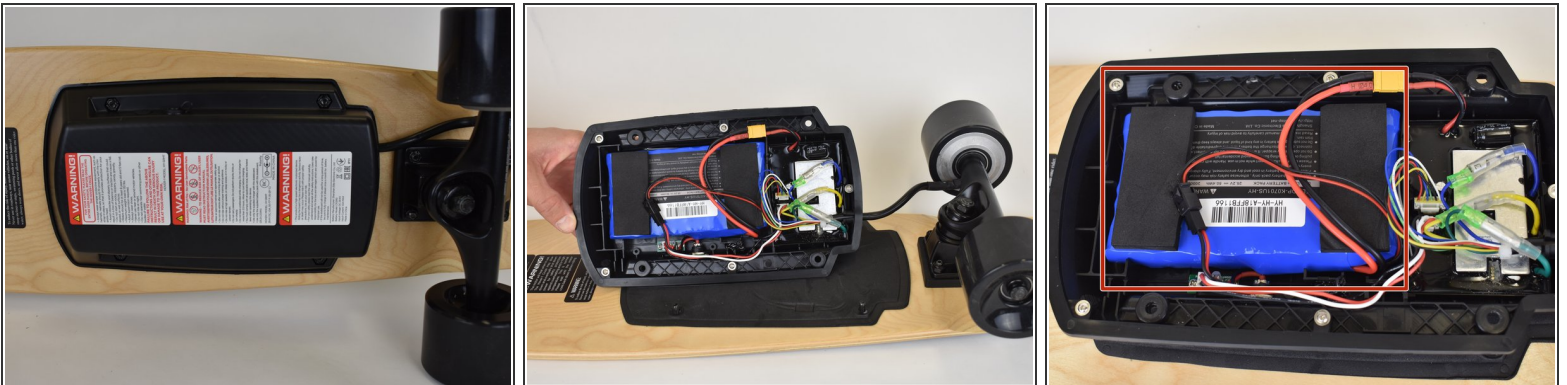
- [Spudger](#) (1)
 - [Probe and Pick Set](#) (1)
 - [Phillips #1 Screwdriver](#) (1)
-

Step 1 — Board Battery



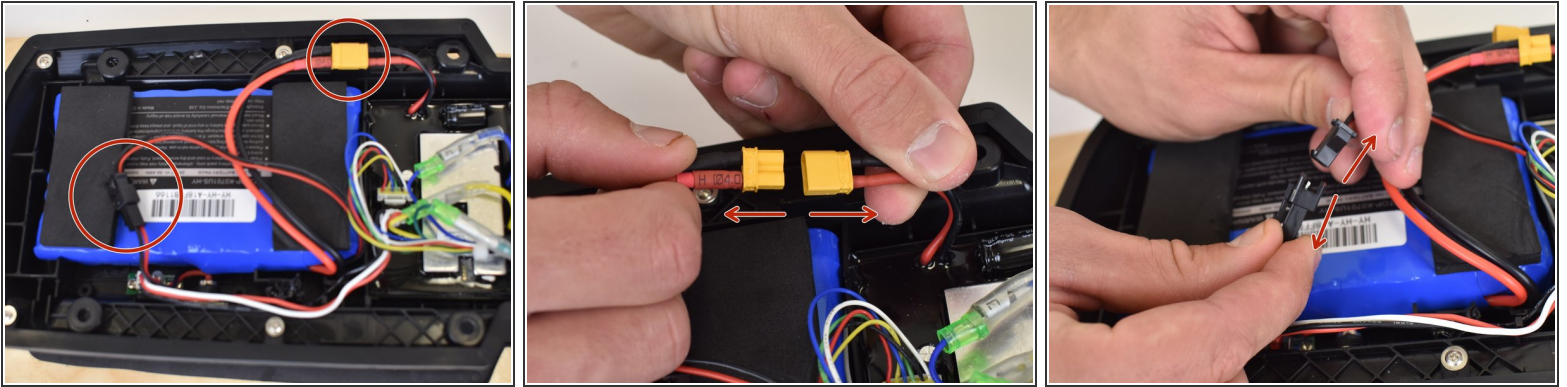
- To remove the battery on the Hover-1 Coast, you must uncover the screws on the top of the board.
- Using a pick tool, puncture the grip tape and expose the screws.
- Loosen all four 1" screws using a Phillips #1 screwdriver.

Step 2



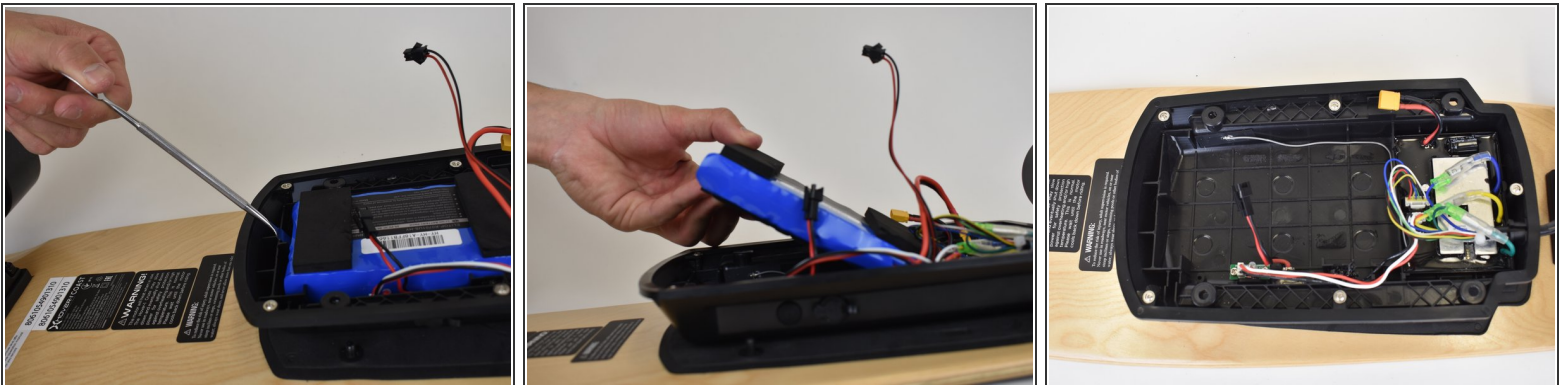
- Now pull the black protective cover off the board.
- Locate the battery.

Step 3



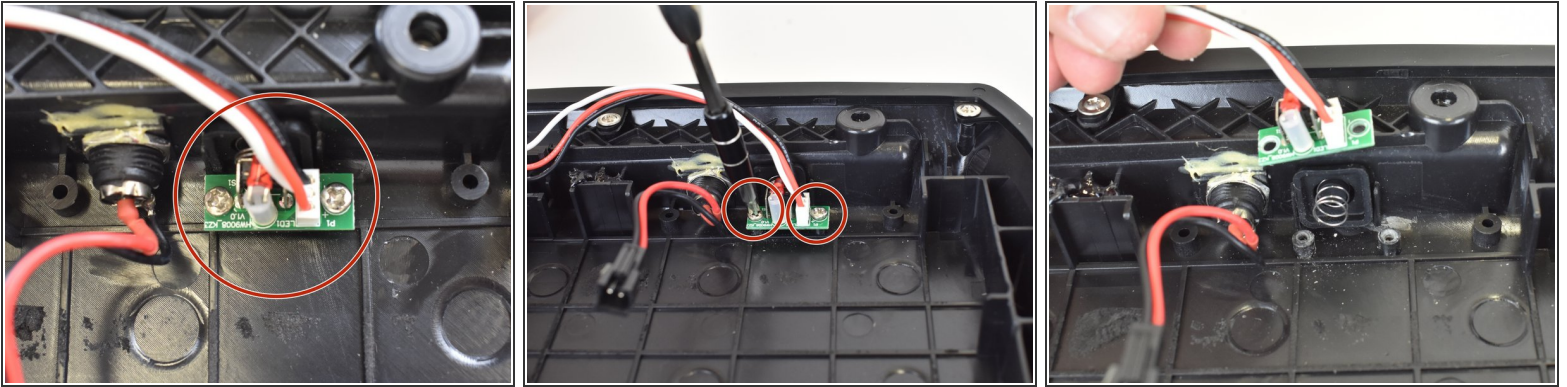
- The battery is connected by these two sets of wires.
- Remove the yellow wire first by pulling the two wires gently in opposite directions.
- Now pull apart the black wire by gently pulling the two wires in opposite directions.

Step 4



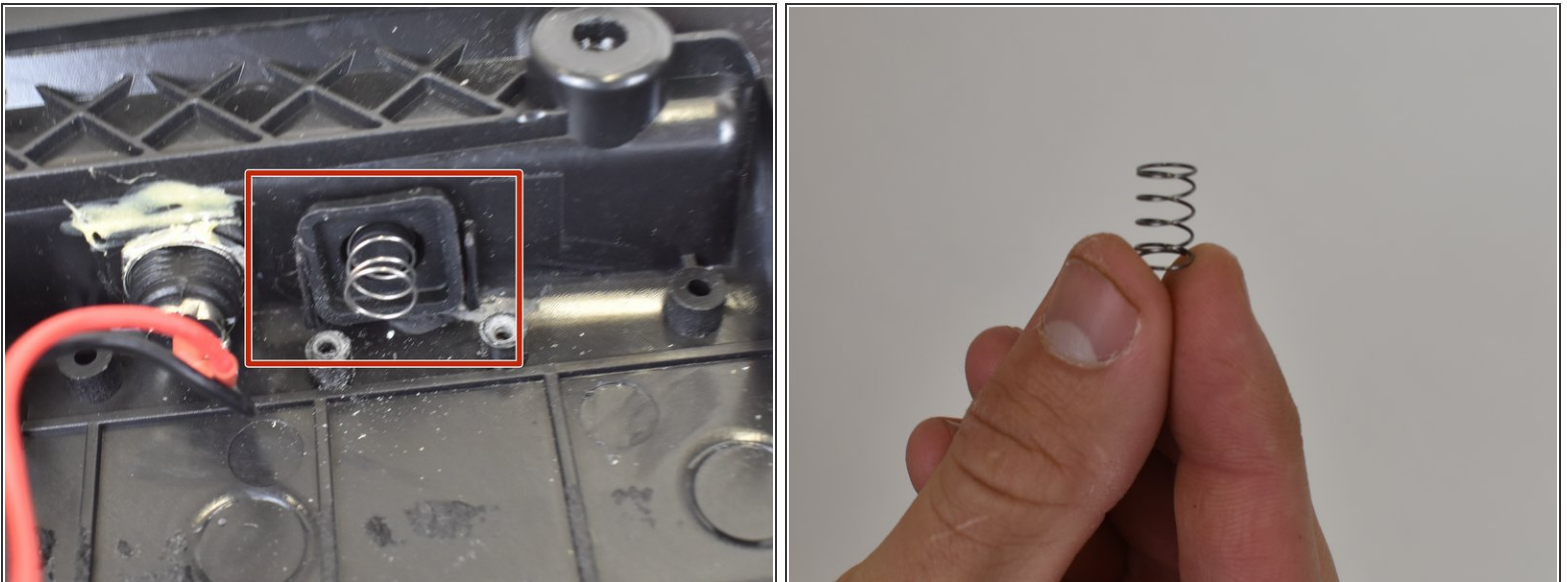
- Once the battery has been disconnected, gently pry the battery upward.
- ⚠ It is important to use a plastic opening tool to avoid puncturing the battery.
- Once the battery is freed, remove it with your hands.
- ⓘ The battery is glued to the case and will require some effort to remove.

Step 5 — Power Button Spring



- Using the Phillips #1 screwdriver, loosen the two screws and place the power button somewhere safe.

Step 6



- Remove the unwanted spring and place your new spring back into the hole.

To reassemble your device, follow these instructions in reverse order.