



D-Link DCS-5222L WiFi Antenna Replacement

How to replace the D-Link DCS-5222L wi-fi antenna.

Written By: Ryan Null



INTRODUCTION

If you find you need to replace the Wi-Fi antenna, follow this guide. Since the antenna is required to connect wirelessly to the camera, replacing the antenna may allow you to reclaim this function. The antenna has a cover that connects to the body, as well as a single wire soldered to the motherboard. A small Phillips head screwdriver and a soldering iron will be needed.



TOOLS:

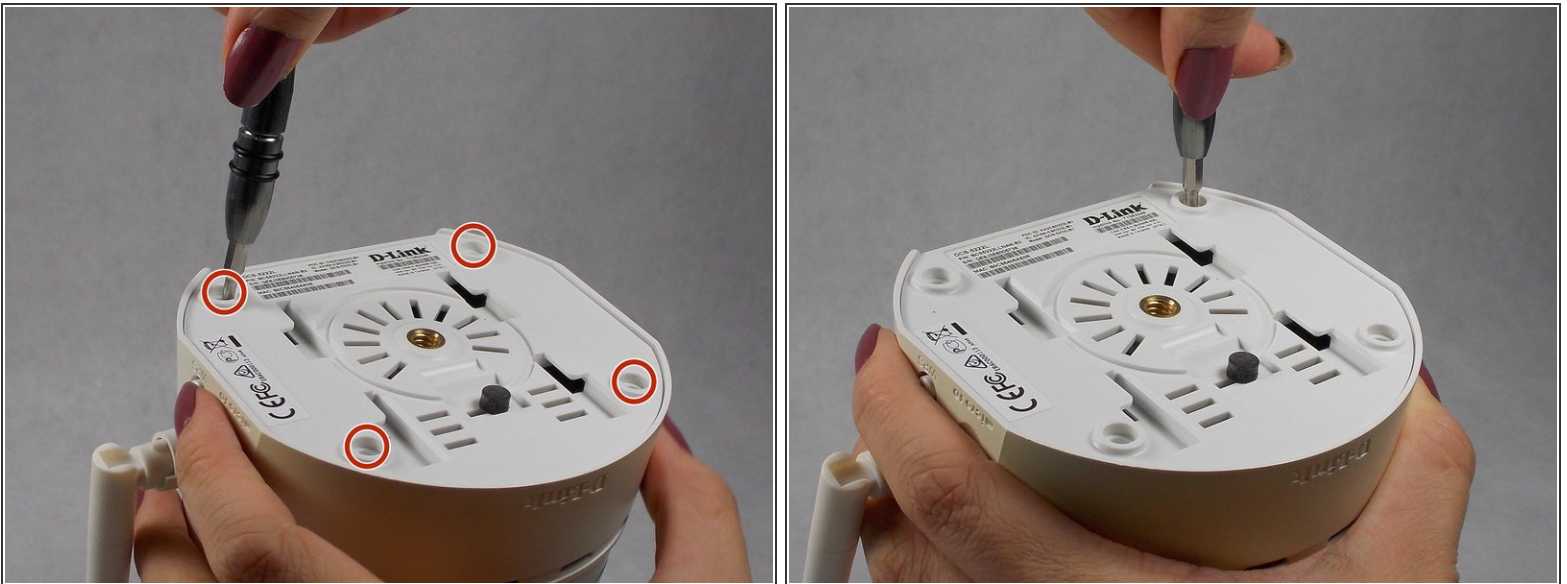
- [Phillips #1 Screwdriver](#) (1)
 - [Portable Soldering Iron](#) (1)
 - [ESD Safe Tweezers Blunt Nose](#) (1)
-

Step 1 — WiFi Antenna



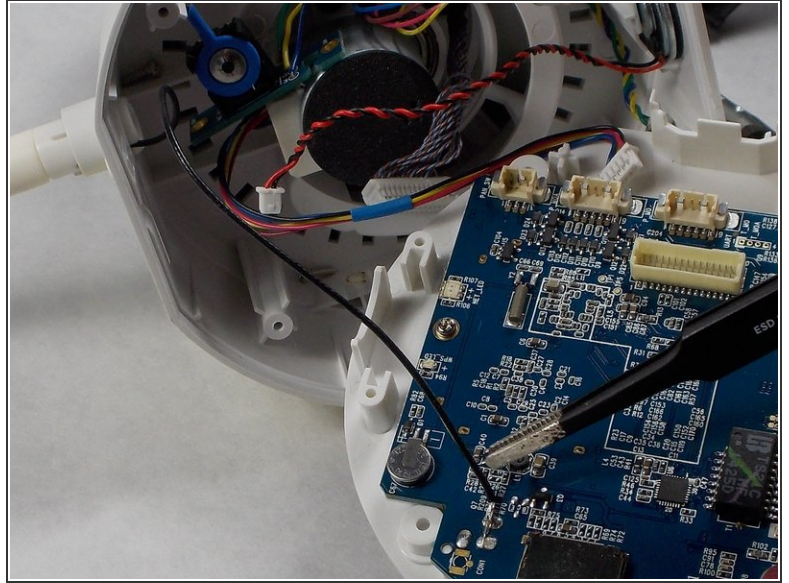
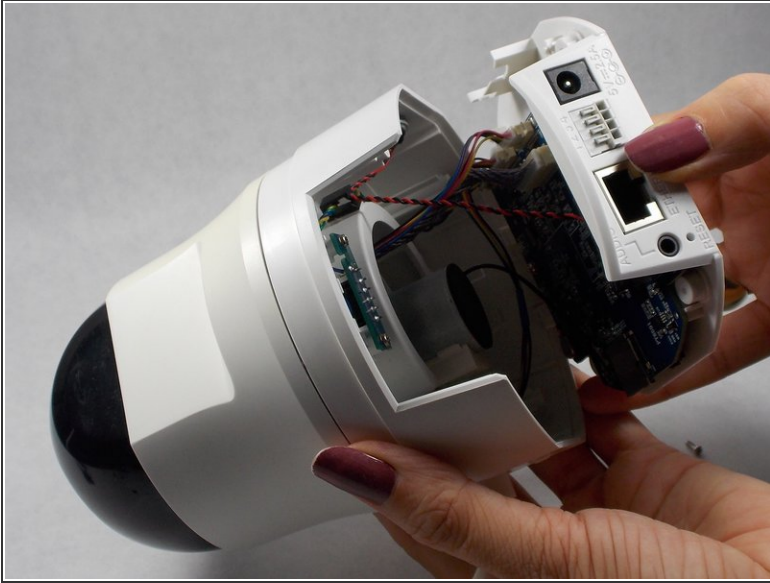
- Locate and remove the four rubber feet on the bottom of the camera using your fingers or a pair of tweezers.

Step 2



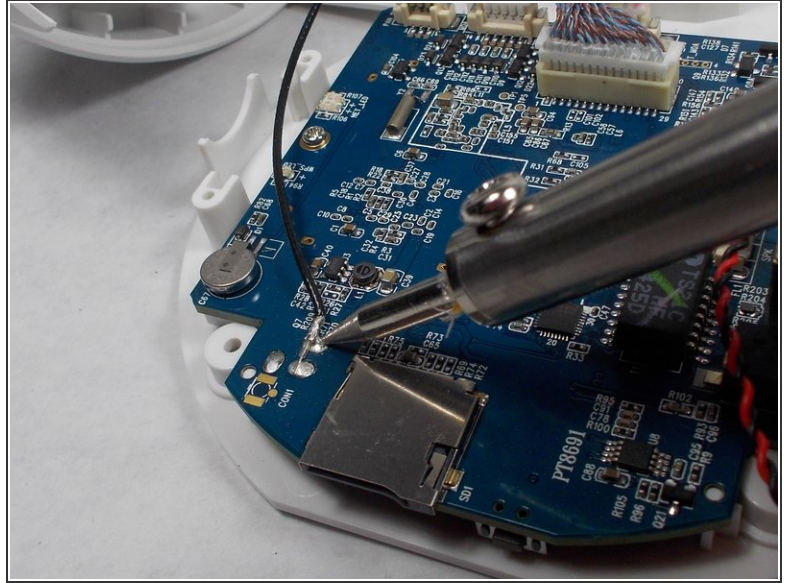
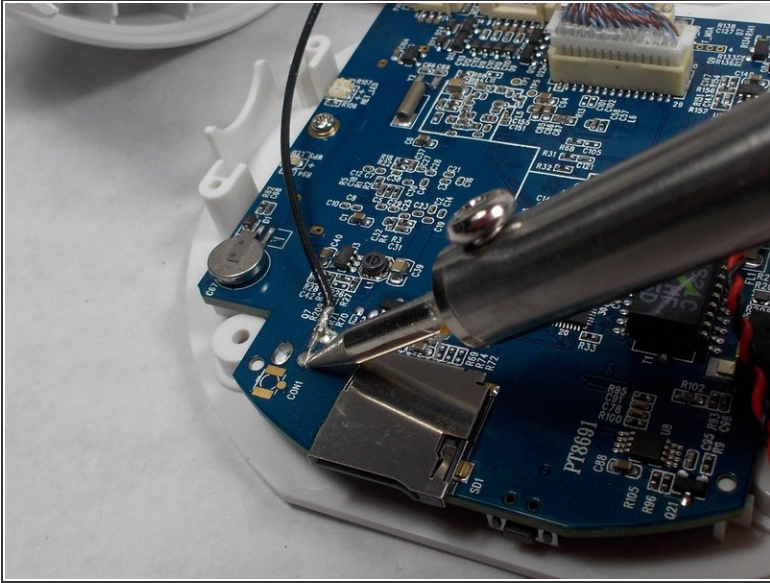
- Using a #1 Phillips screwdriver, remove the four 7mm screws that are exposed by the removed feet.

Step 3



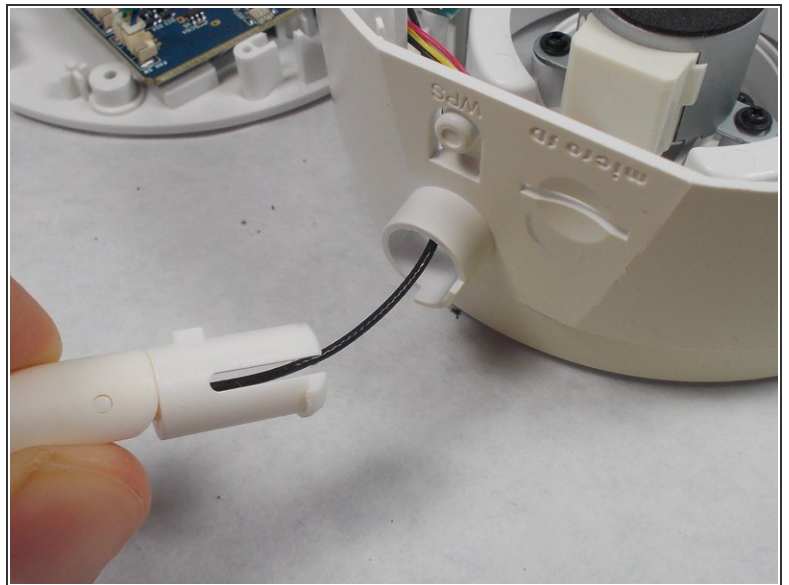
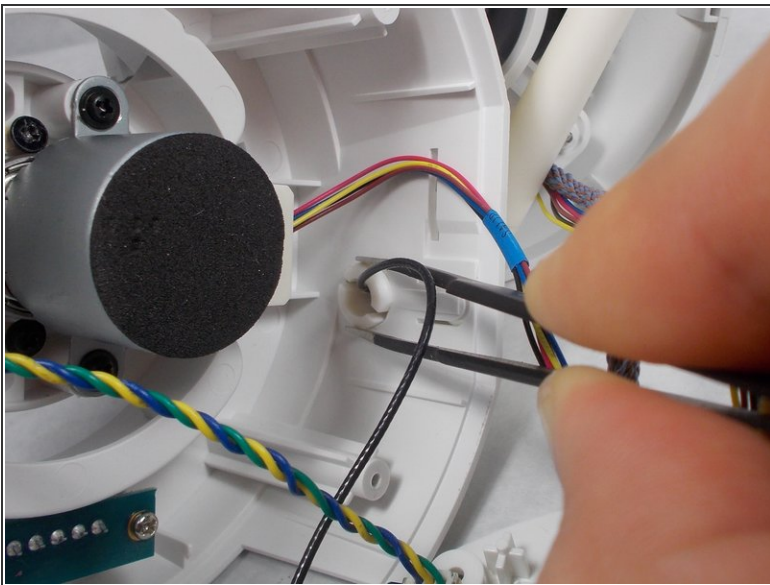
- Using your hands, open the camera body by wiggling the bottom free from the upper shell.
- ① Open the shell carefully, as the motherboard is attached to the bottom of the body; all of the components in the upper body are accordingly connected to the bottom. Likewise, the WiFi antenna is mounted to the upper shell, but a wire connects it to the motherboard on the bottom of the body.

Step 4



- Using your soldering iron, heat the antenna contacts on the motherboard until the wire releases.
⚠ Soldering Irons are hot and can burn you and ignite flammable materials.

Step 5



- Pinch the WiFi antenna's clip mount inside the upper part of the body with blunt ended tweezers while pulling the antenna from the outside.

To reassemble your device, follow these instructions in reverse order.