



Microsoft Lumia 640 LTE Screen Replacement

This guide is used to help users to remove the...

Written By: Nick Emmert



INTRODUCTION

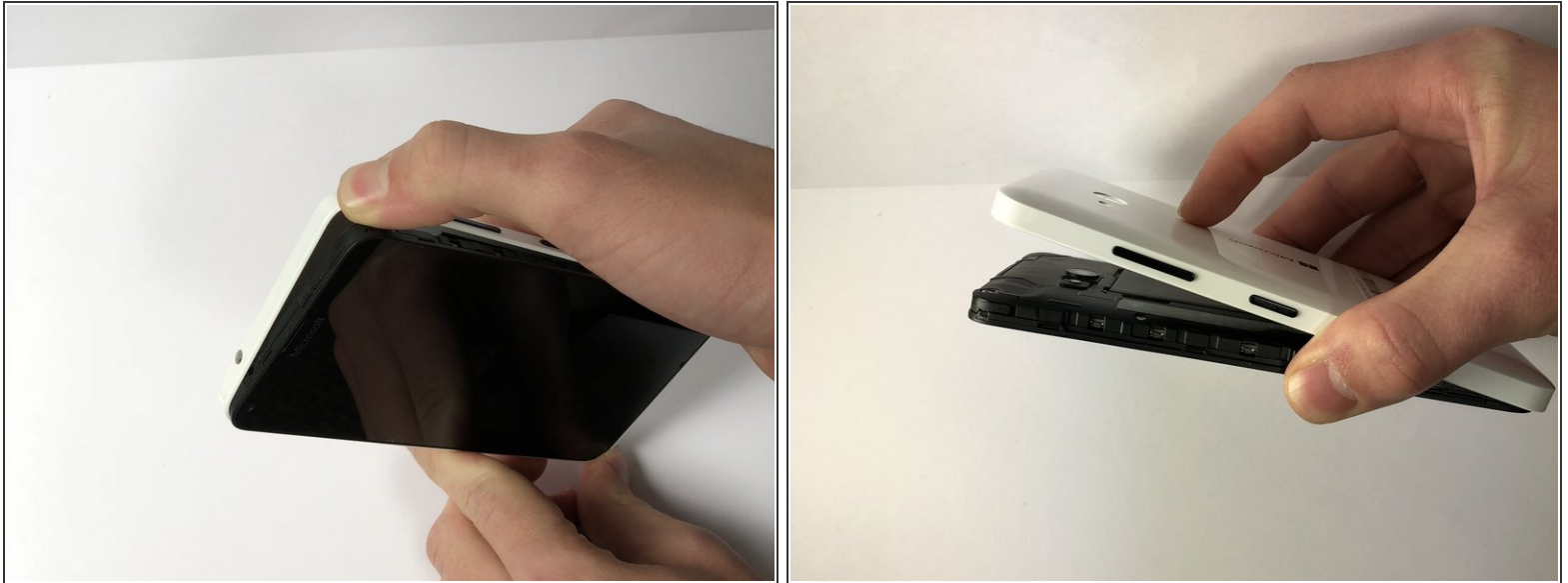
This guide is used to help users to remove the screen and replace with another for Microsoft Lumia 640 LTE.



TOOLS:

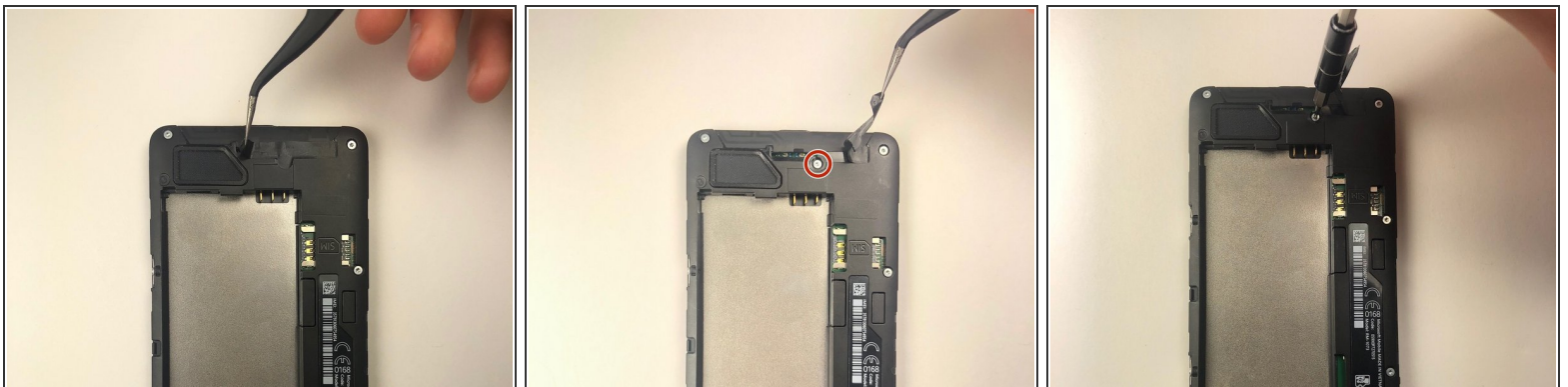
- [Fingers](#) (1)
 - [T4 Torx Screwdriver](#) (1)
 - [Tweezers](#) (1)
 - [iFixit Opening Tool](#) (1)
-

Step 1 — Back Cover



- Use your thumb or fingernail on the edge/corner of the phone to pry the back cover off the phone.

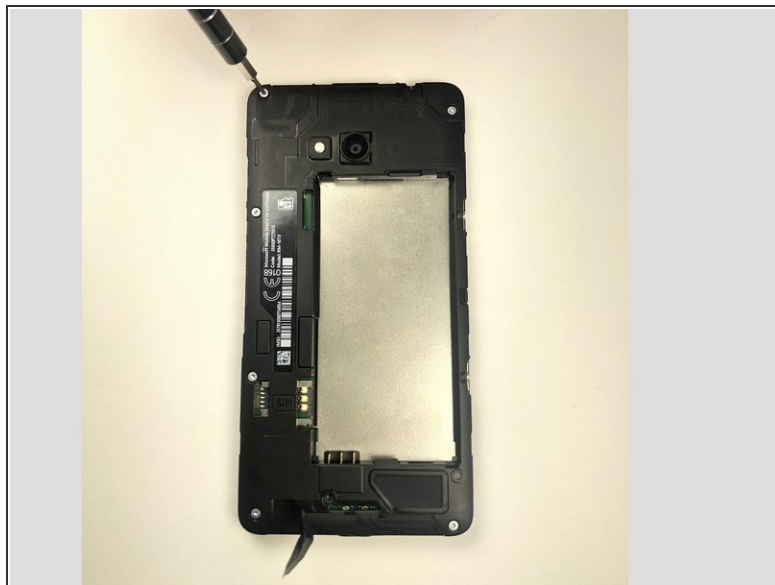
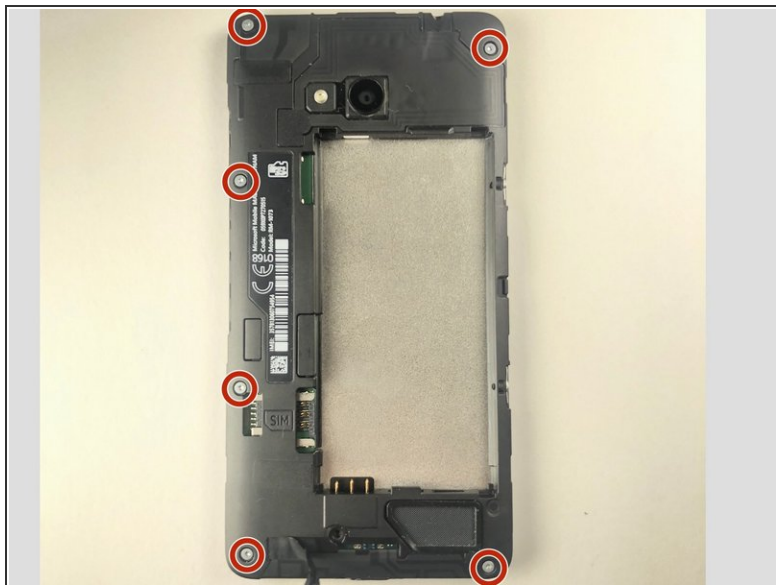
Step 2 — Screen



- Use the tweezers to pull back the sticker, revealing the screw underneath.

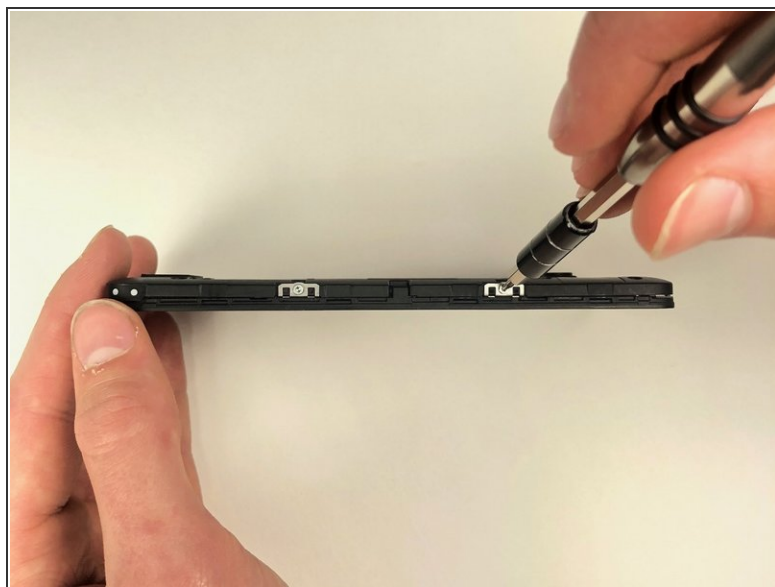
⚠ Be careful when removing the screws as they can strip easily.

Step 3



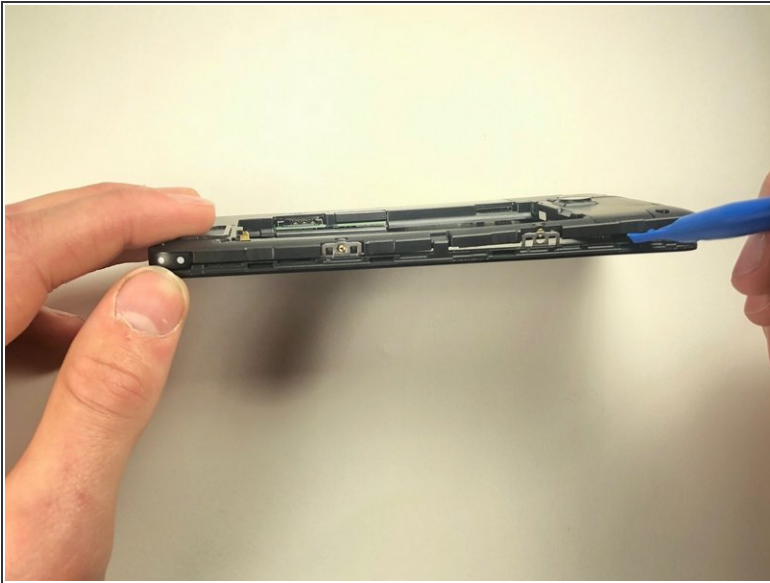
- Use a T4 Torx driver to remove the screws in the four corners, along with the two in the middle left side (six total).

Step 4



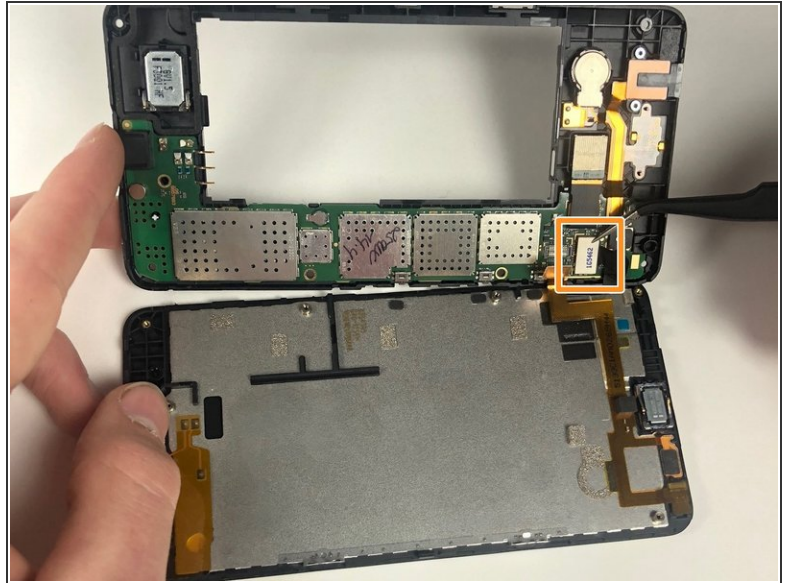
- Using the T4 Torx driver, unscrew the two screws.
 - ☑ Keep these screws separate from the screws from back of the phone to ensure that the right screws go where they belong.

Step 5



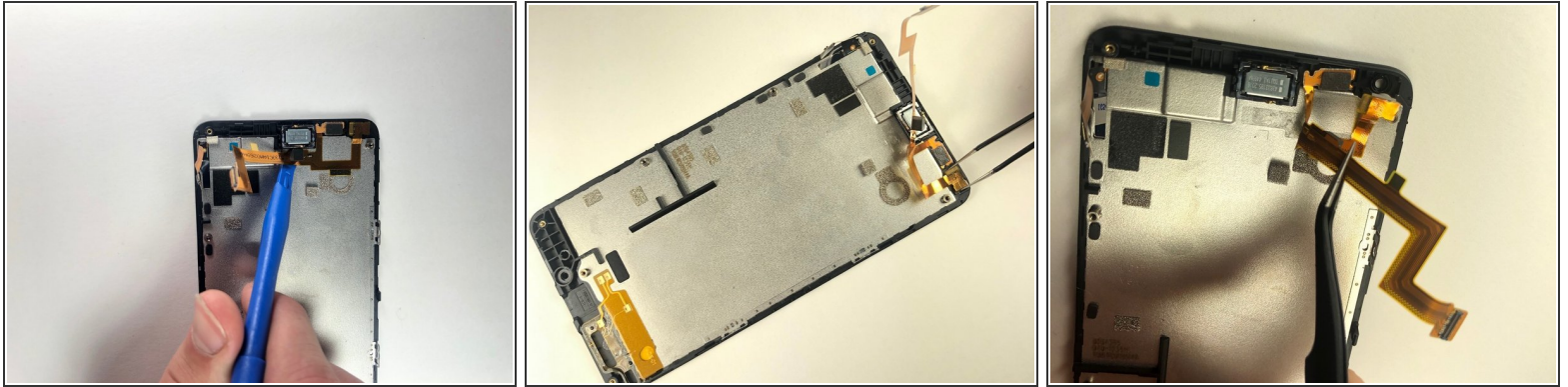
- Use a plastic opening tool to separate the screen from the back plastic casing
- Use tweezers to release the clip on the side of device, and remove the back of the phone.

Step 6



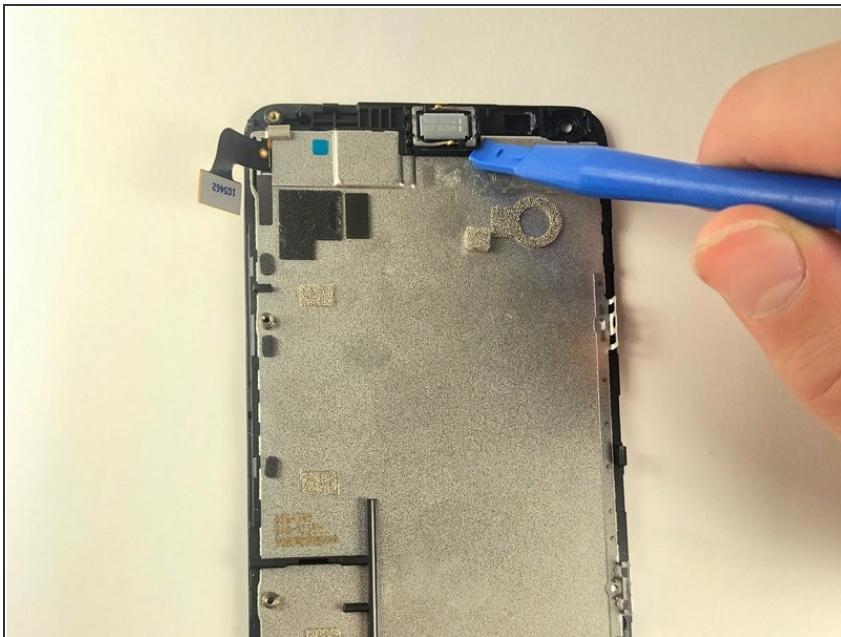
- Using the tweezers or a spudger, pull the gold tab up gently.
 - Using tweezers or a spudger, lift the white connector up gently to completely detach the screen from the phone.
- i* For motherboard replacement, skip to Step 11 after finishing this step .**

Step 7



- Using a plastic opening tool to carefully get under the gold strip.
- Use tweezers to pull up the camera.
- Use tweezers to pull up on the depth sensor.
- ⓘ This is held in by a strong adhesive.

Step 8



- Use a plastic opening tool to pry up the ear speaker.
- ⓘ This is held in by strong adhesive.

To reassemble your device, follow these instructions in reverse order.