



# Hover-1 Matrix LED Replacement

This guide is to show users how to replace the LED running light for the Hover-1 Matrix.

Written By: Jici Zhuang



---

## INTRODUCTION

When the Hover-1 Matrix is turned on, the LED light in the board will glow to show you that it is on. It is an important part of the hoverboard because it lights up the path in front of you. If you have a broken LED it could lead to injuries.

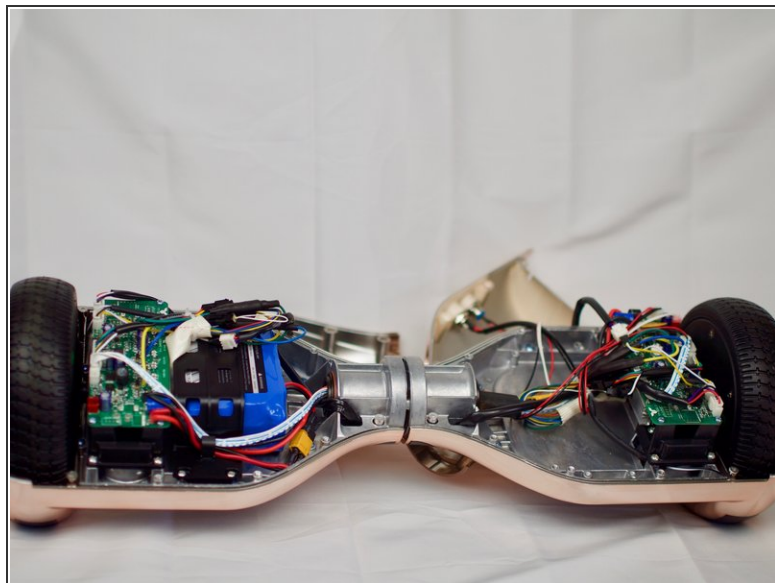
If you have already tried other troubleshooting methods, and have not found a solution, this guide will teach you how to replace the LED light in your Hover-1 Matrix.



### TOOLS:

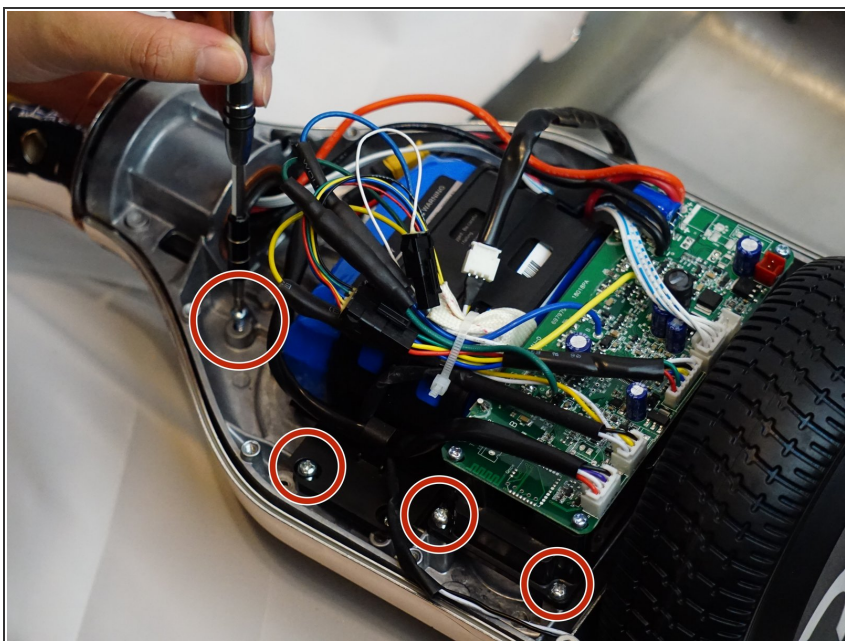
- [Phillips #1 Screwdriver](#) (1)
  - [Phillips #0 Screwdriver](#) (1)
-

## Step 1 — LED light



- Flip the board over to remove the screws from the back panel using a Phillips #1 screwdriver.
- ⓘ The last photo in this step shows what the Hover-1 Matrix Board looks like without the back panel.

## Step 2



- Remove the screws on the metal layer inside using the Phillips #0 screwdriver.

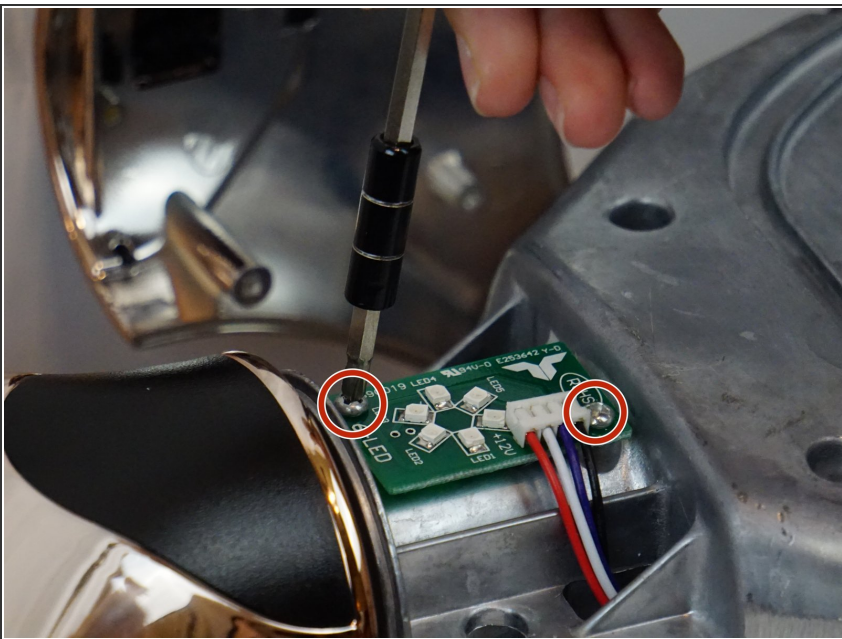


### Step 3



- Separate the upper shell from the metal layer inside.

### Step 4



- Remove the two screws from the circuit board.
- Remove the circuit board and LED light.

To reassemble your device, follow these instructions in reverse order.