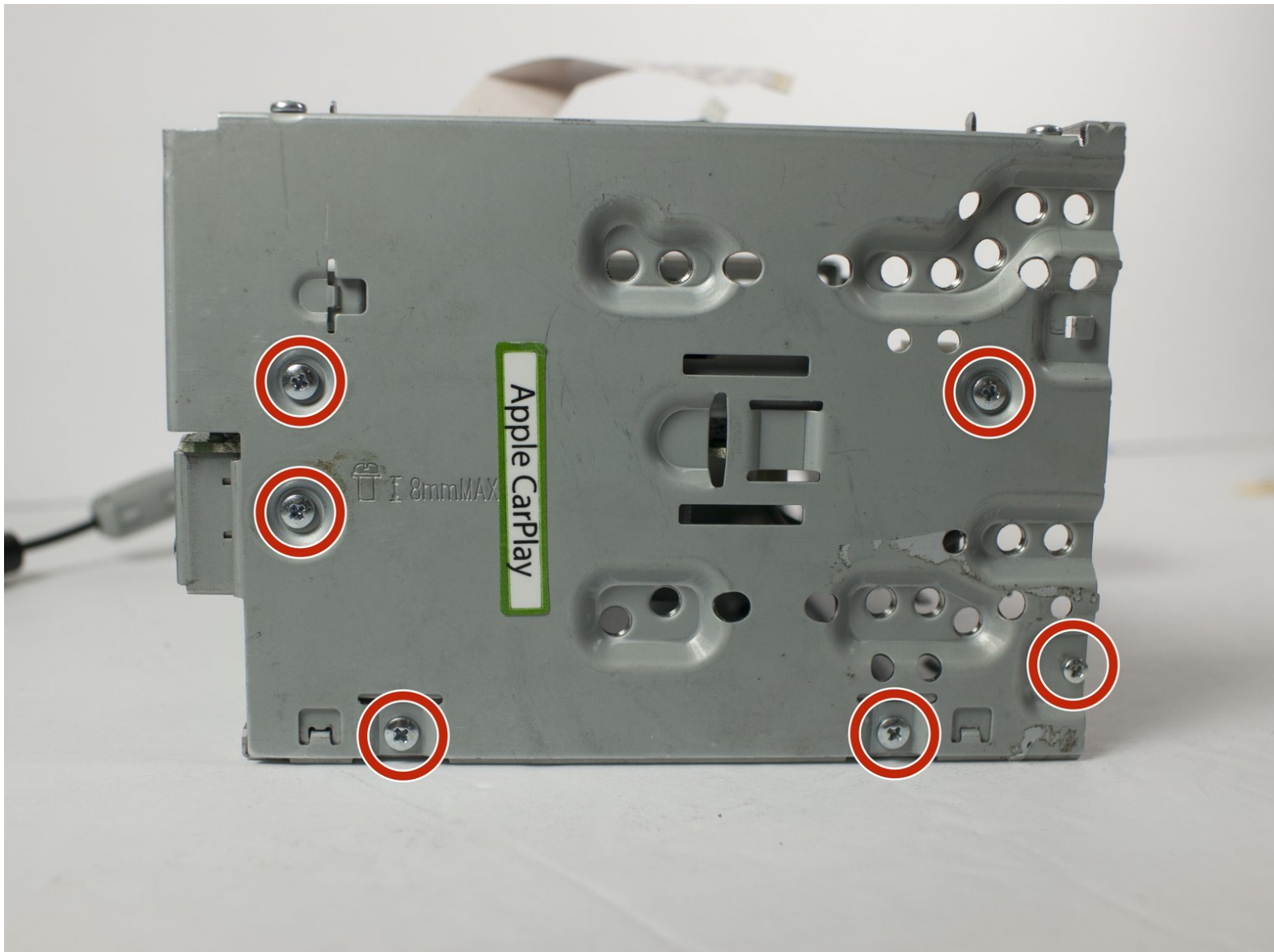




JVC KW-V820BT Driver Side Panel Removal and Replacement

JVC KW-V820BT Driver Side Panel Removal and Replacement.

Written By: Marshall Andersen



INTRODUCTION

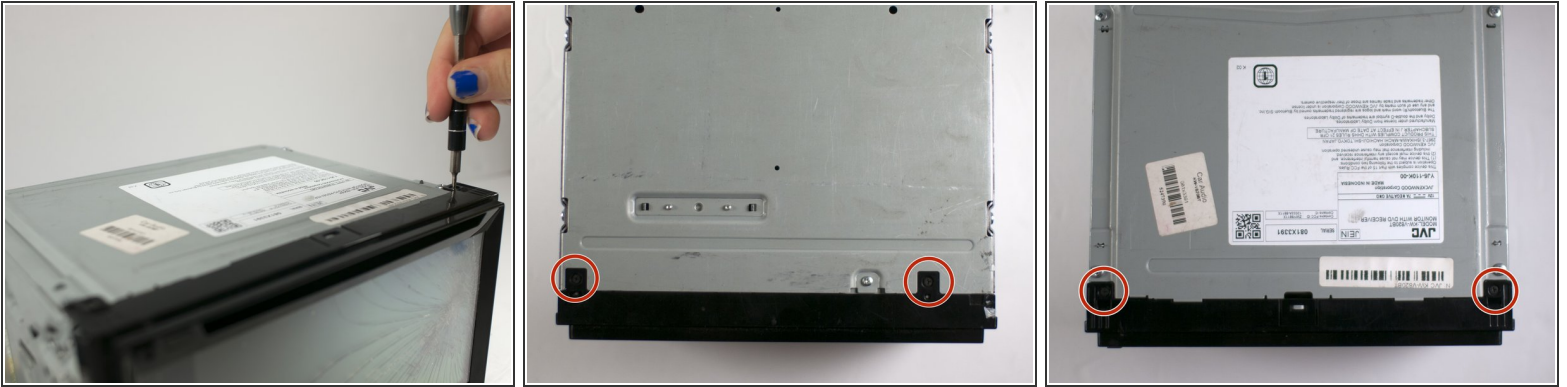
Removal of the driver side panel of the device will allow access to other internal components.



TOOLS:

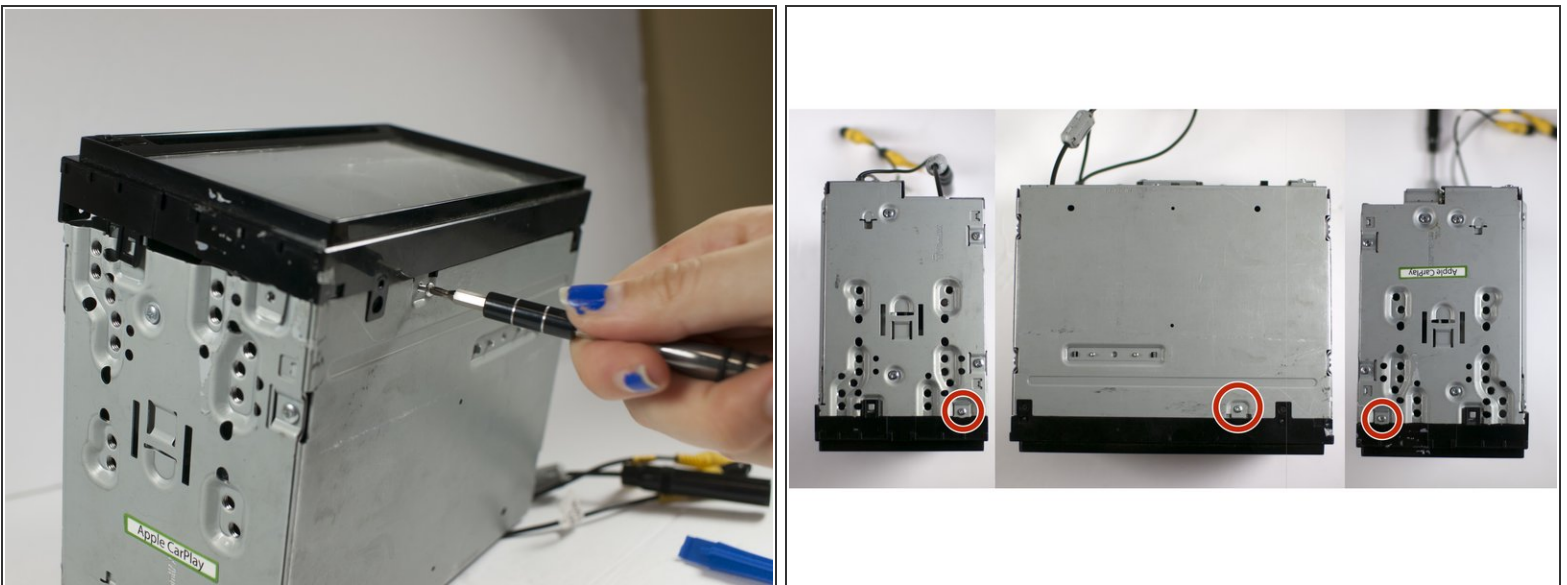
- [Tweezers](#) (1)
 - [Phillips #00 Screwdriver](#) (1)
 - [Phillips #0 Screwdriver](#) (1)
 - [Spudger](#) (1)
 - [Metal Spudger](#) (1)
-

Step 1 — Front Panel Assembly



- Remove the four 1/8-inch black machine screws using a Phillips #00 screwdriver.

Step 2



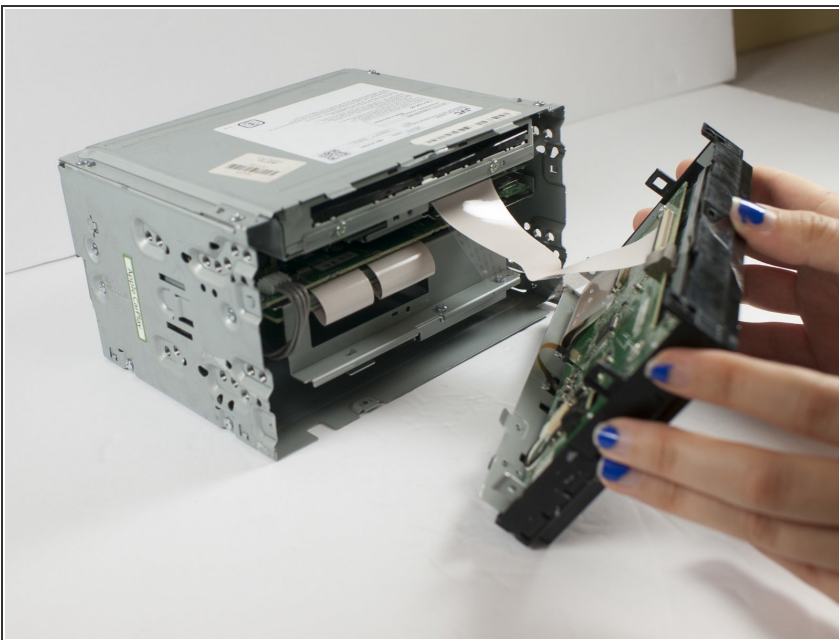
- Remove three steel-finish, pan-head, 1/64 x 3/16" machine screws identified in the photograph, using the Phillips #0 screwdriver.

Step 3



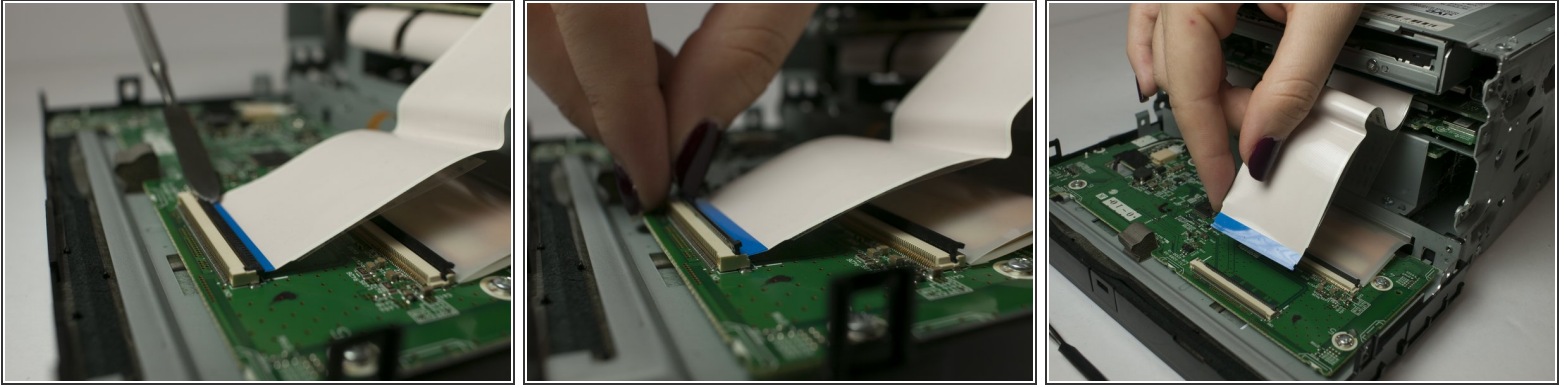
- Using your fingers and/or a metal spudger, gently release the plastic locking tabs of the front panel assembly from the steel enclosure while prying the front panel assembly away from the steel enclosure with your fingers.

Step 4




- Gently remove the front panel from the steel enclosure.

Step 5



- Gently separate the ribbon cable from from ZIF connector on the circuit board using a metal smudger.

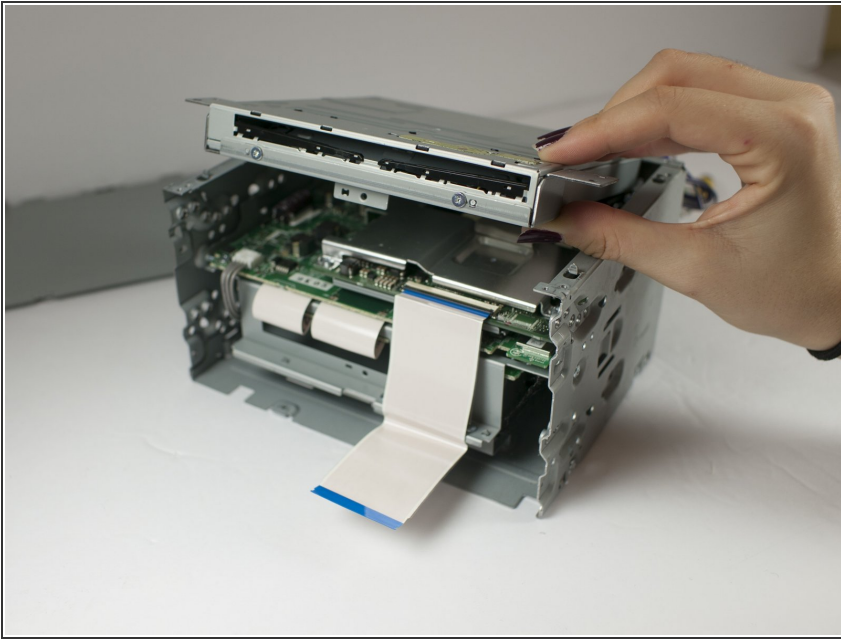
 Be careful not to scratch or damage components or features of the circuit board with the metal spudger

Step 6 — Top Panel Removal



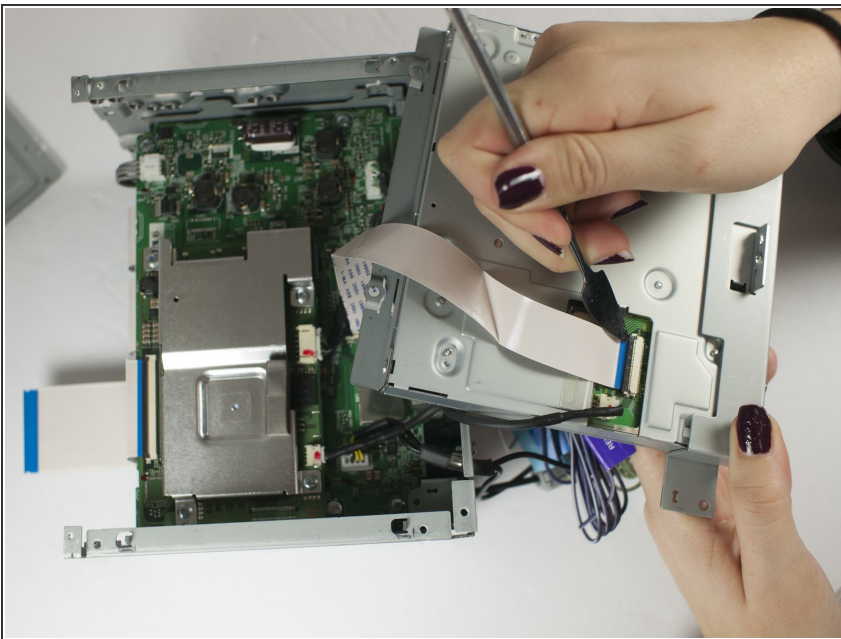
- Remove seven 1/64 x 3/16" screws from the top panel using the Phillips #0 screwdriver.
- Remove the top panel.

Step 7 — Disc Drive



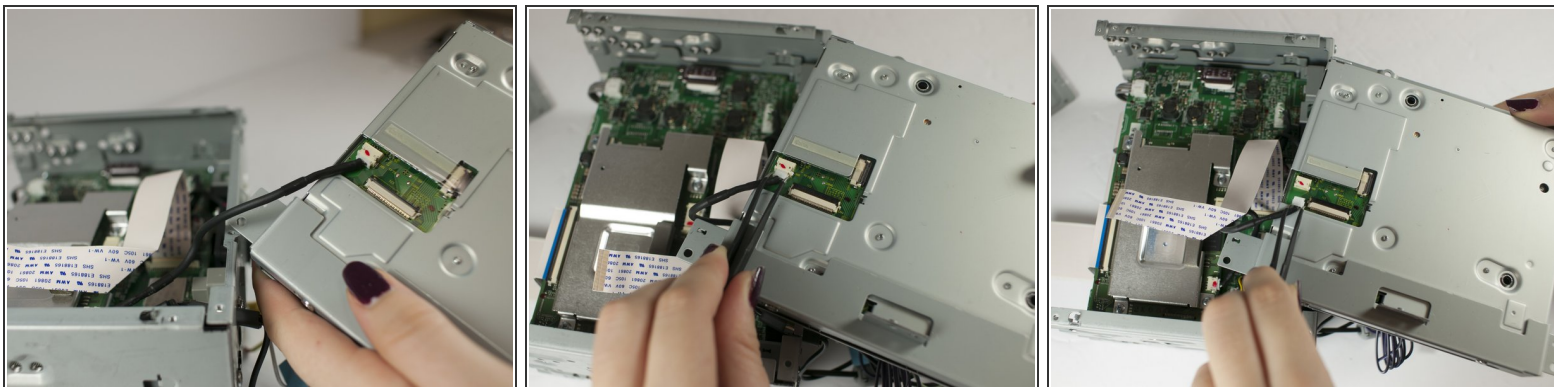
- After removing all screws and top panel, lift up disc drive from steel enclosure.

Step 8



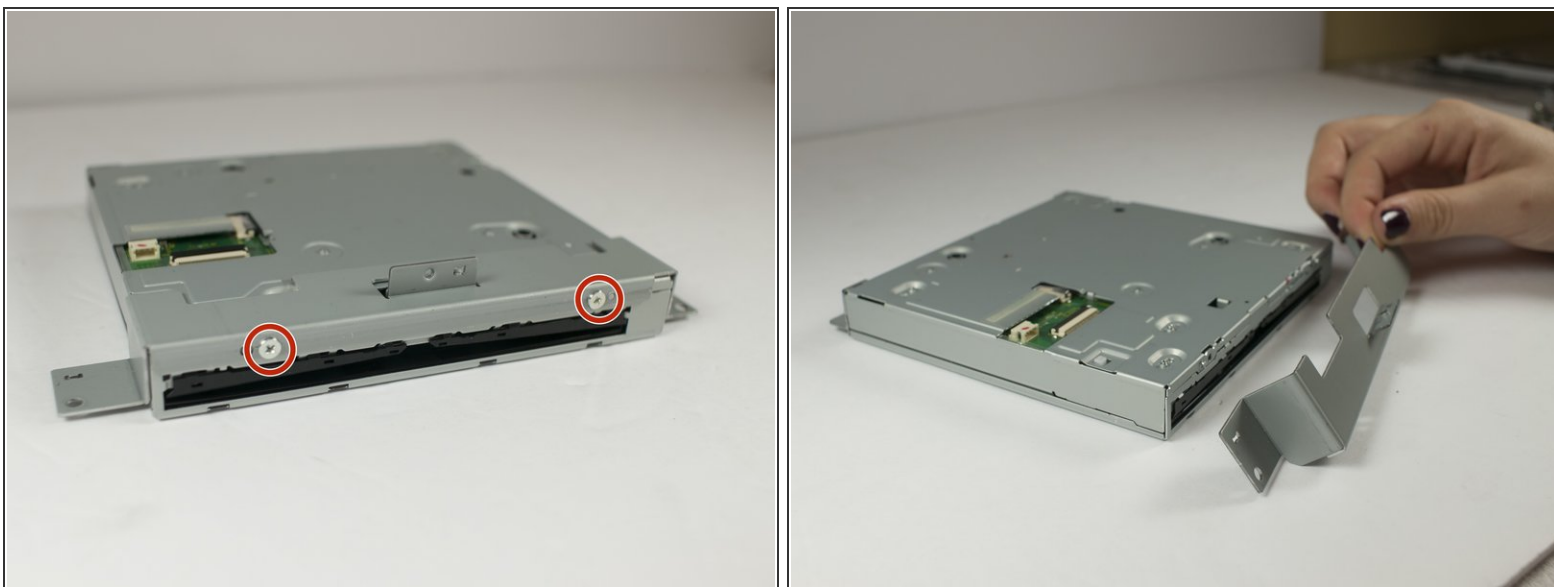
- Turn over the disc drive to expose the connector.
- Gently remove the ribbon cable from the ZIF on the circuit board using the metal spudger.

Step 9



- Gently pull to remove the electrical connector from disc drive.

Step 10



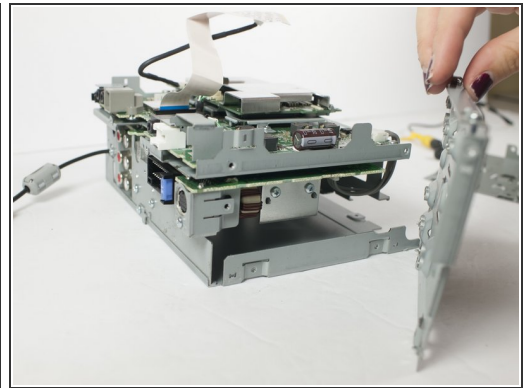
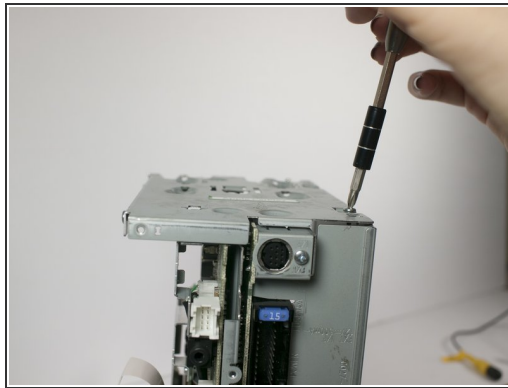
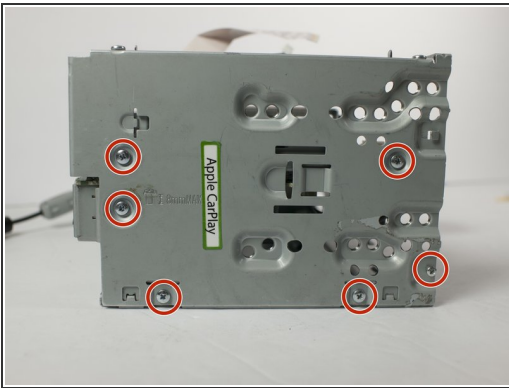
- Remove 2 pan-head, 1/64 x 3/16" machine screws using a Phillips #0 screwdriver.

Step 11



- Remove 2 pan-head, 1/64 x 3/16" machine screws using a Phillips #0 screwdriver.

Step 12 — Driver Side Panel Removal and



- Remove the six pan-head, 1/64 x 3/16" machine screws using a Phillips #0 screwdriver.

To reassemble your device, follow these instructions in reverse order.