



# JVC KW-V820BT Cooling Fan Removal and Replacement

Written By: Marshall Andersen



## INTRODUCTION

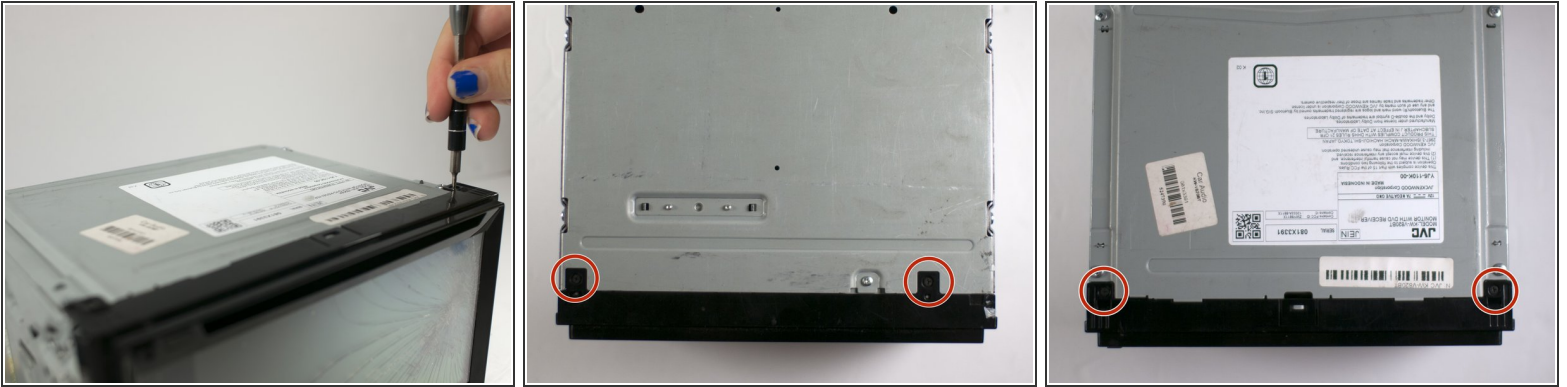
The cooling fan helps to cool the circuitry inside of the audio device. The cooling fan is controlled by the circuitry in the audio device. The fan may cycle on or off, depending on the temperature of the device. A failing cooling fan may present unusually loud noises when running, or it may not run at all. Once the fan is removed, it is possible to bench test the fan using an appropriate power supply and replace the fan with a compatible unit. Model number and power requirements are detailed on the fan itself. Our fan draws 50 mA at 12V DC.

---

### TOOLS:

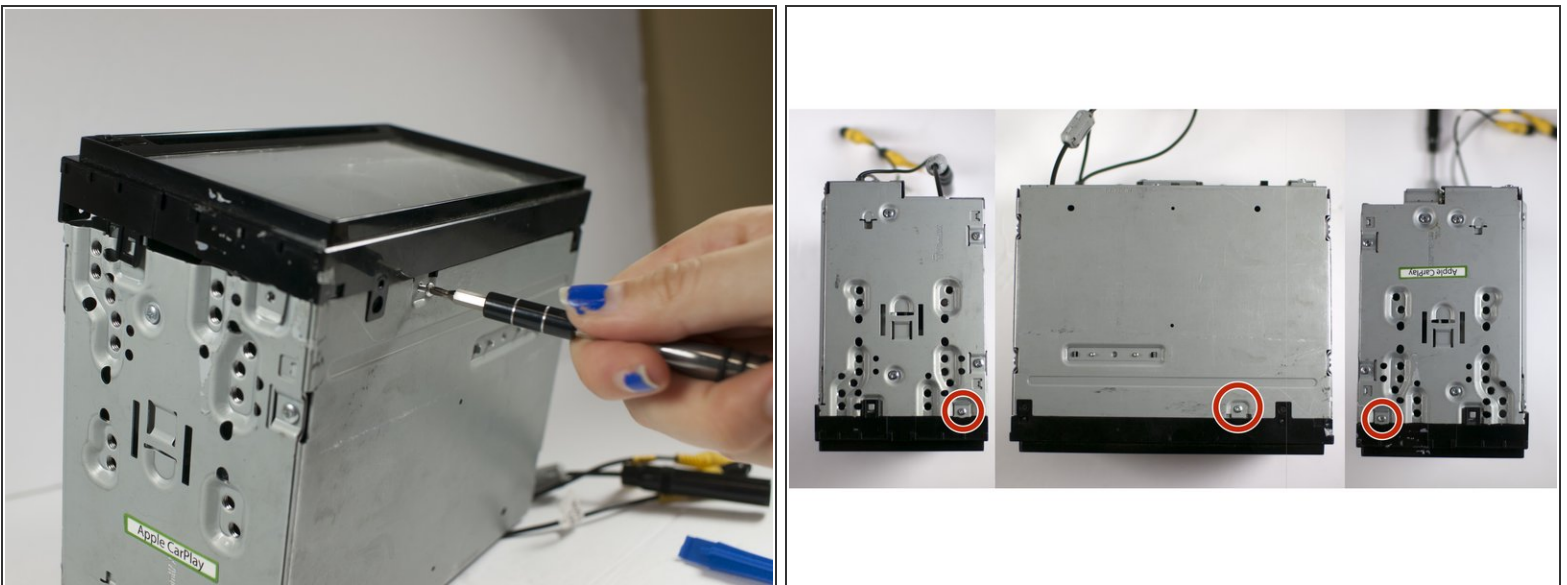
- [Phillips #00 Screwdriver](#) (1)
  - [Spudger](#) (1)
  - [Metal Spudger](#) (1)
  - [Phillips #0 Screwdriver](#) (1)
-

## Step 1 — Front Panel Assembly



- Remove the four 1/8-inch black machine screws using a Phillips #00 screwdriver.

## Step 2



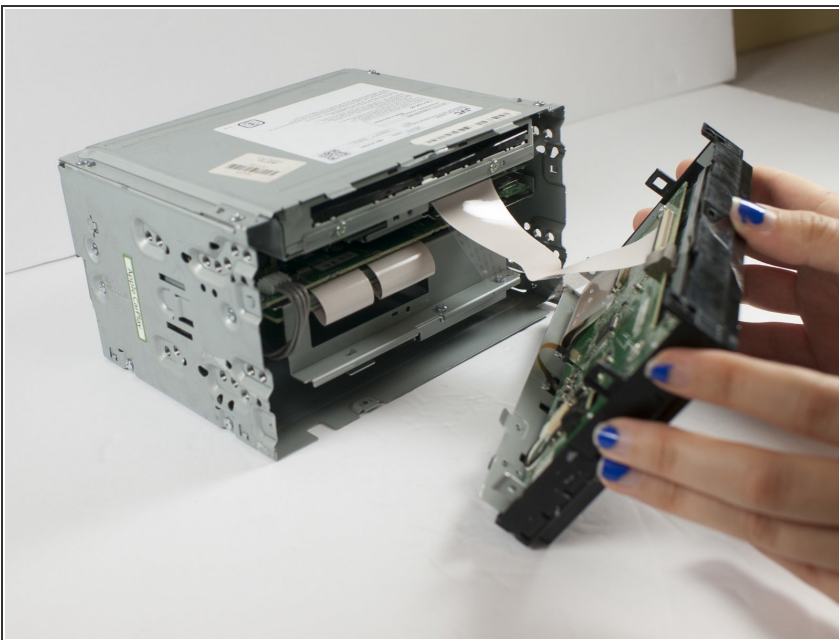
- Remove three steel-finish, pan-head, 1/64 x 3/16" machine screws identified in the photograph, using the Phillips #0 screwdriver.

### Step 3



- Using your fingers and/or a metal spudger, gently release the plastic locking tabs of the front panel assembly from the steel enclosure while prying the front panel assembly away from the steel enclosure with your fingers.

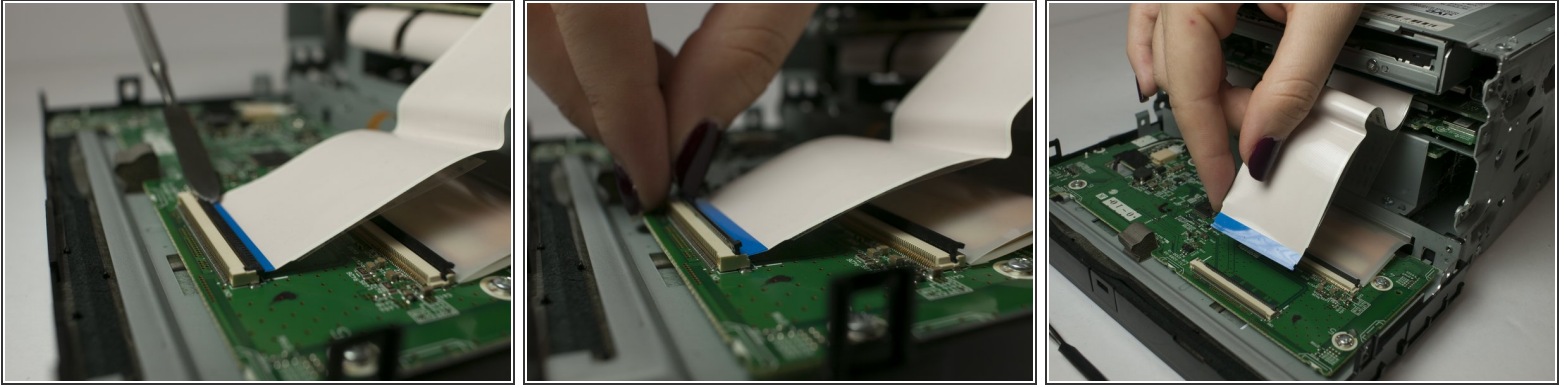
### Step 4




- Gently remove the front panel from the steel enclosure.



## Step 5



- Gently separate the ribbon cable from from ZIF connector on the circuit board using a metal smudger.

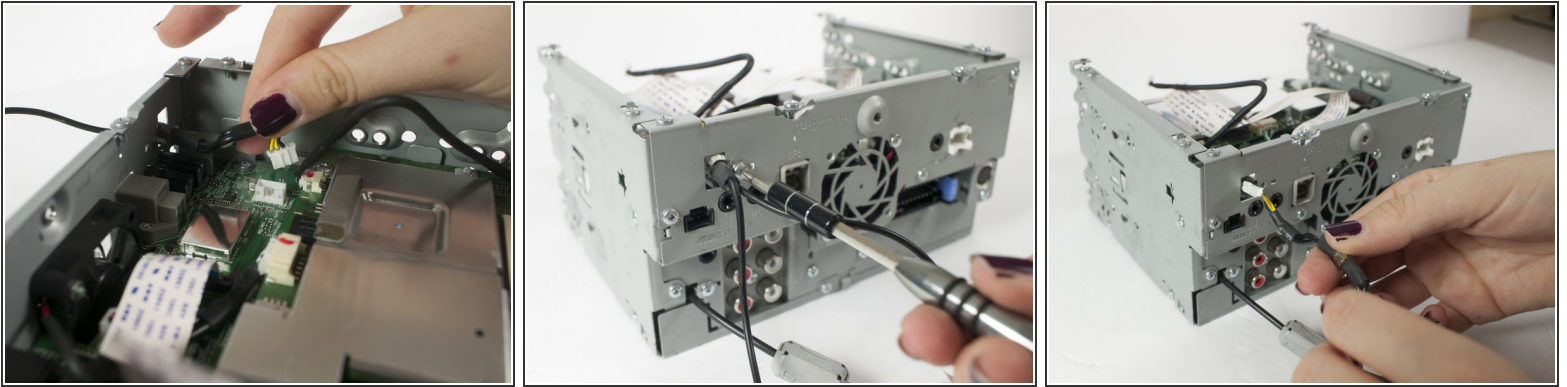
 Be careful not to scratch or damage components or features of the circuit board with the metal spudger

## Step 6 — Top Panel Removal



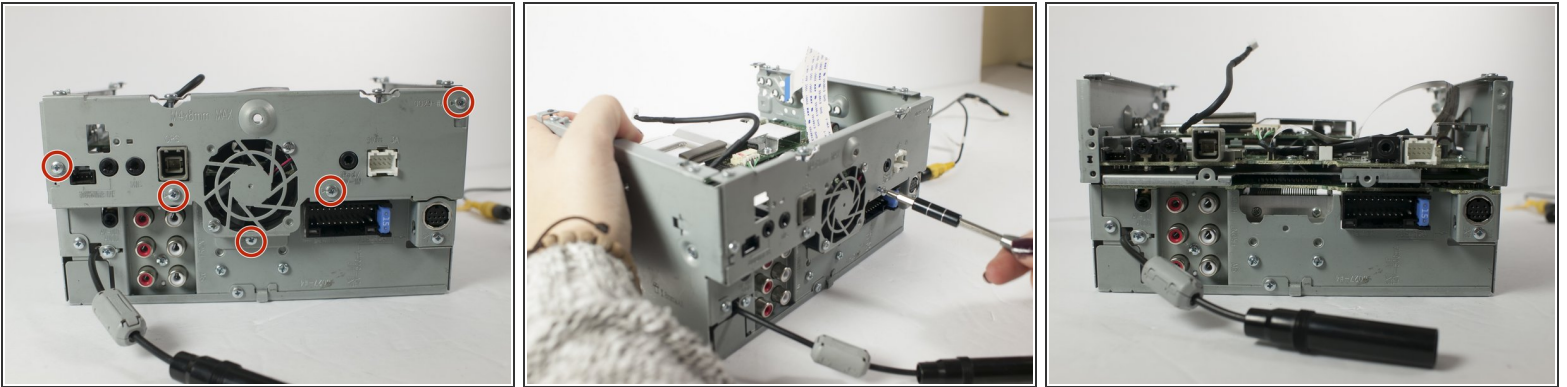
- Remove seven 1/64 x 3/16" screws from the top panel using the Phillips #0 screwdriver.
- Remove the top panel.

## Step 7 — Rear Panel Removal and Replacement



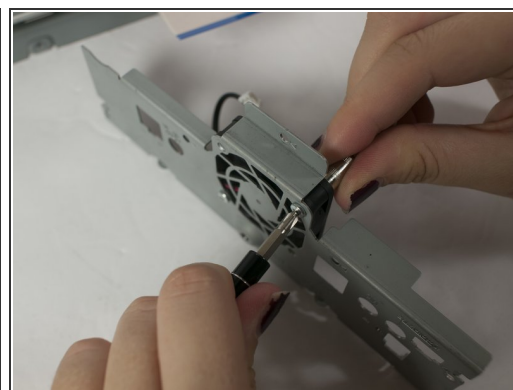
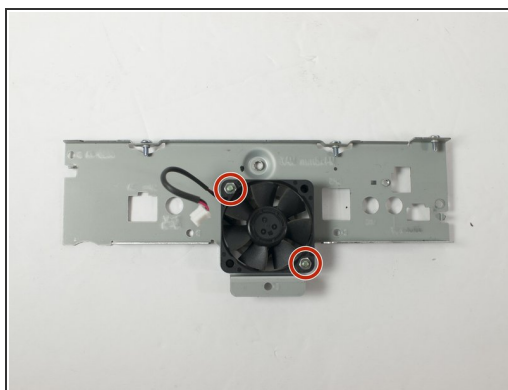
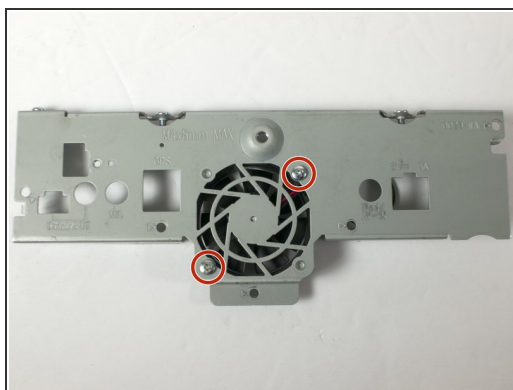
- Disconnect Video Out/Rear View Camera cable from circuit board.
- Remove the Video Out/Rear View Camera cable retaining clip using after removing 0-64 x 3/16" machine screw using a Phillips #0 screwdriver.
- Withdraw Video Out/Rear View Camera cable from rear panel.

## Step 8



- Remove the five 1/64 x 3/16" machine screws from the rear panel identified in the photograph.
- Remove rear panel.

## Step 9 — Cooling Fan



- Remove the two 1-64 x 1/2" machine screws and the retaining nuts that fasten the cooling fan to the rear panel using the Phillips #0 screwdriver and the 5/32" socket.

To reassemble your device, follow these instructions in reverse order.