



HP Chromebook 11-2210nr SD Card Reader Replacement

This guide will show the steps needed to replace a faulty or damaged SD card reader on your HP Chromebook 11-2210nr.

Written By: Gerardo Cardona



This document was generated on 2020-11-14 07:40:20 PM (MST).

INTRODUCTION

In this guide, you will be able to perform the process of removing and replacing your current SD card reader located at the top left corner above the battery. Once the removal of the keyboard is accomplished, you will be able to access other components from your HP Chromebook 11-2210nr.



TOOLS:

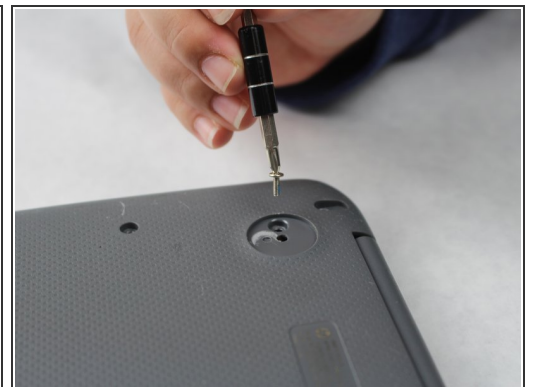
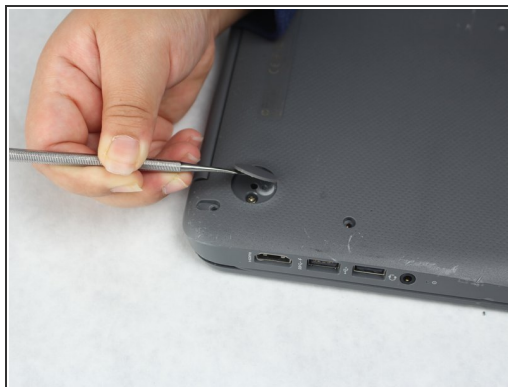
- [Phillips #1 Screwdriver](#) (1)
 - [Metal Spudger](#) (1)
 - [Spudger](#) (1)
-

Step 1 — SD Card Reader



- Turn over your laptop and remove the 9 visible 6mm screws using the Phillips #1 screwdriver.

Step 2



- Using the metal spudger, remove the two rubber pads that are closer to the hinge of the laptop.
- Remove the two additional 6mm screws located beneath the rubber pads using the Phillips #1 screwdriver.
- ⓘ The two bottom rubber pads do not contain screws, but you may check if you wish to be sure.

Step 3



- Turn the Laptop over and with the metal spudger start to run it along the plastic seam to pry it off.
- ⓘ You will hear popping sounds when you are sliding the spudger along the device.
- ⓘ For an easier removal, start from the sides and work your way in to the corners.

Step 4




- Carefully lift off the keyboard and gently place it towards you until the two ribbon wires become visible and place the keyboard down.
 - Locate where the two ribbon wires are being held in place by two chips.
- ⚠ This does not disconnect the keyboard from the laptop just yet.

Step 5



- Using the nylon spudger, push the plastic clasps holding the two ribbon wires up to properly disconnect the wires.

 You must use the nylon spudger for this step. Any metal can damage your motherboard.

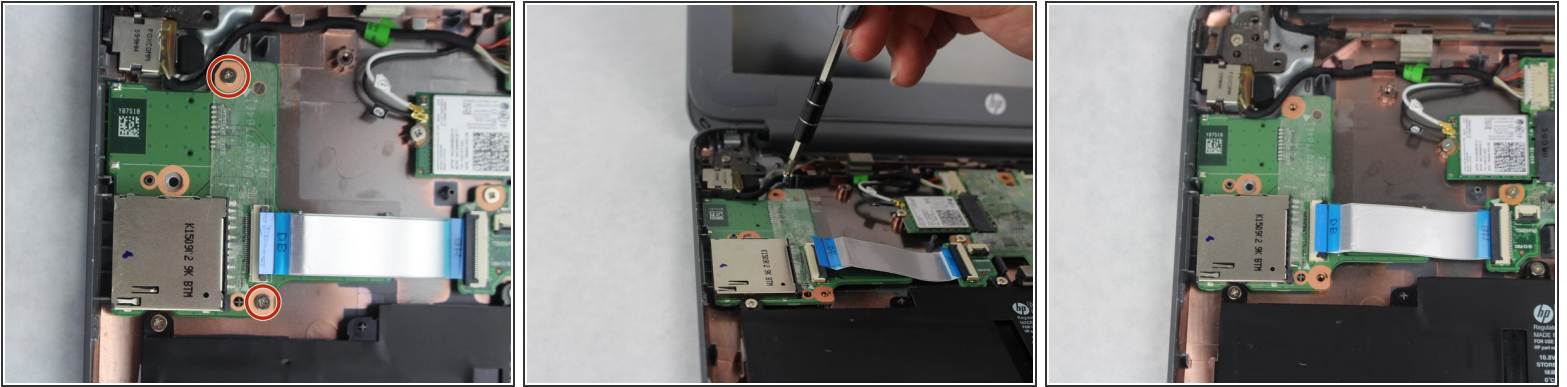
 This step completely disconnects the keyboard to allow safe removal and replacement.

Step 6



- Locate the SD card reader at the top left corner above the battery.
- Flip up the plastic clasps holding the ZIF connectors into place by using the nylon spudger or your finger.
- Gently slide out the ribbon cable, removing it from the SD Card Reader.

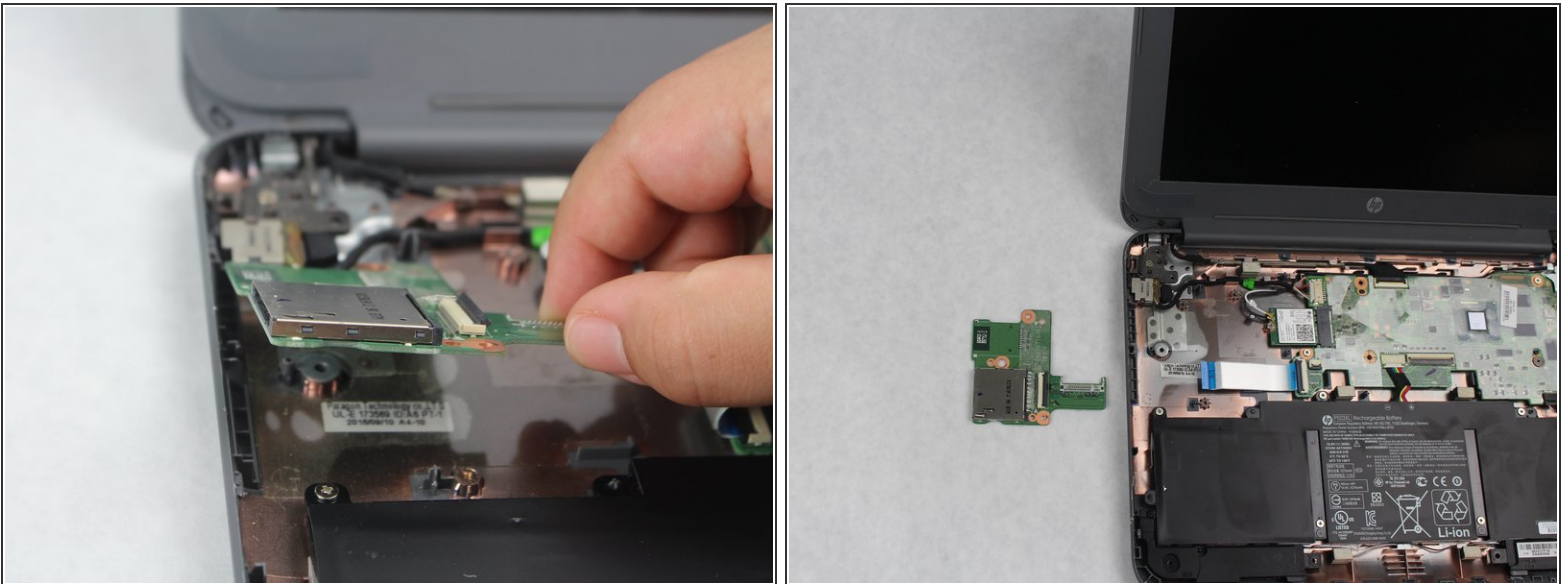
Step 7



- Remove the two 4mm screws using a Phillips #1 screwdriver.

 This successfully disconnects the SD port from the laptop.

Step 8



- Gently lift and remove SD Card Reader component from laptop.

To reassemble your device, follow these instructions in reverse order.