

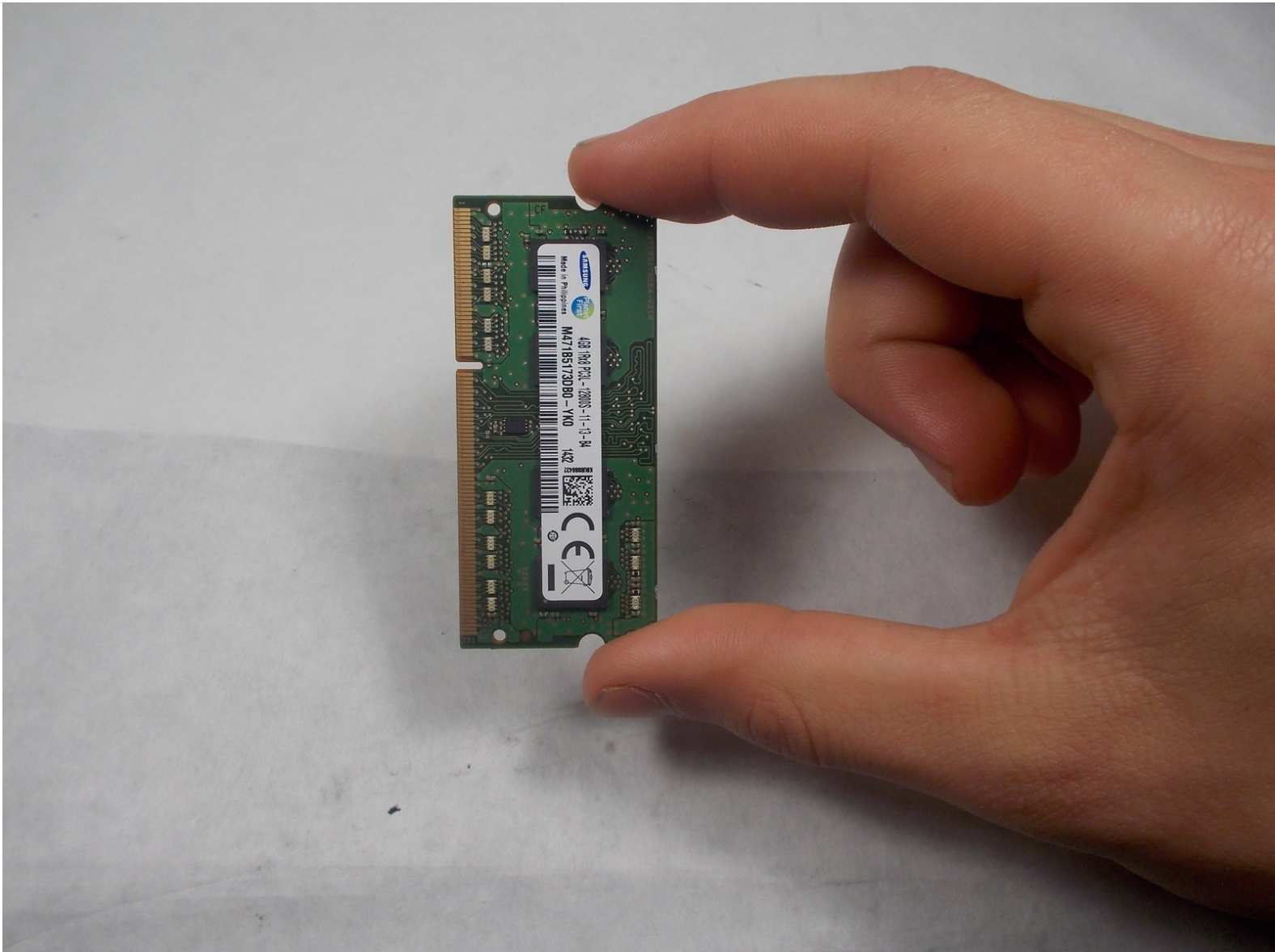


Toshiba Satellite Click 2 L35W-B3204 RAM

Card Replacement

How to replace Toshiba Satellite Click 2 L35W-B3204 RAM.

Written By: Lexi Lannigan



INTRODUCTION

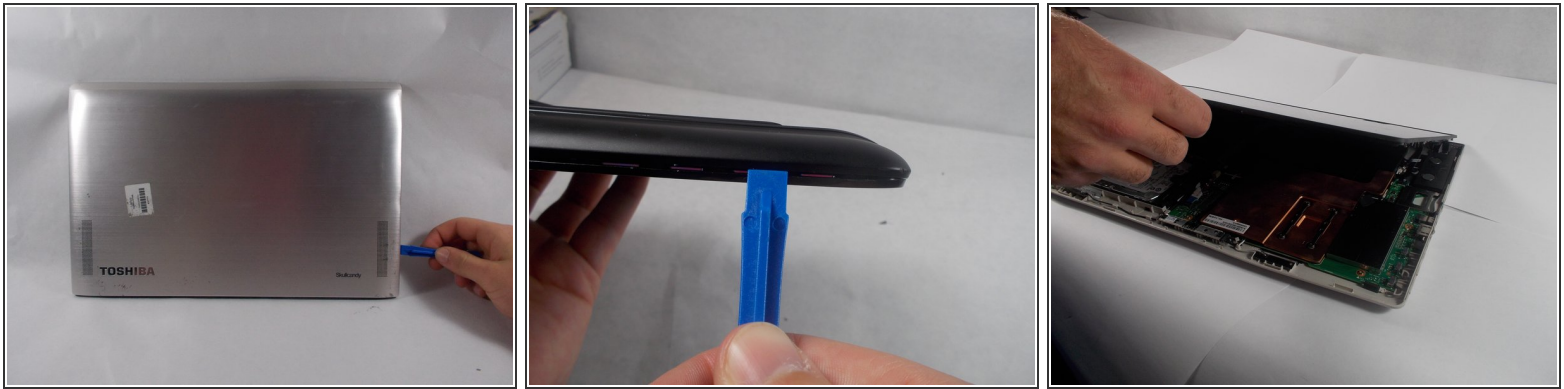
If your laptop is always running slow and lagging, this guide will show you how to replace or upgrade your RAM card to solve this issue. This replacement only requires the screen portion of the laptop, so remove the keyboard before beginning.



TOOLS:

- [Spudger](#) (1)
 - [iFixit Opening Tools](#) (1)
 - [Tweezers](#) (1)
 - [Phillips #0 Screwdriver](#) (1)
-

Step 1 — Screen



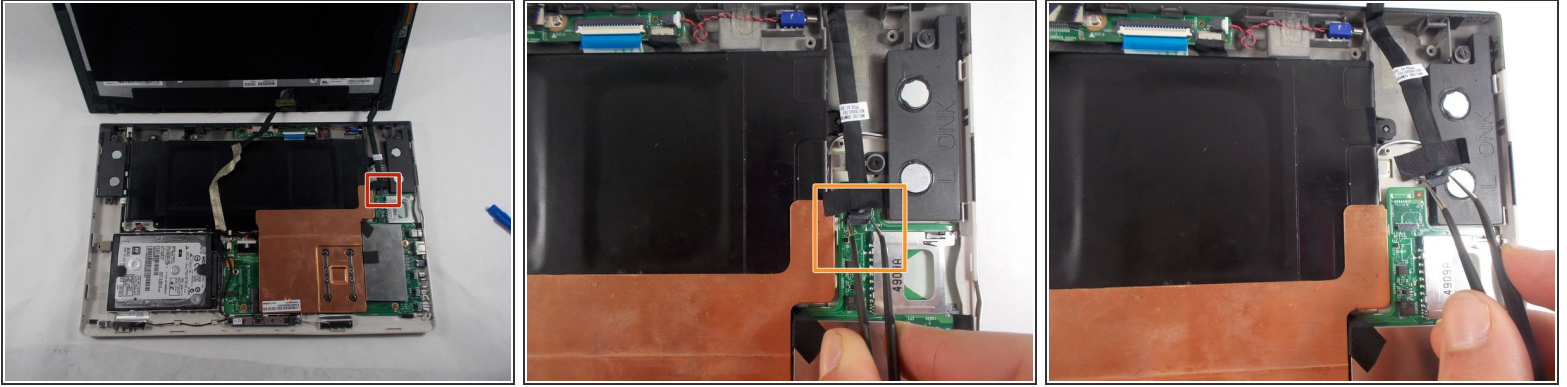
- Begin by inserting the plastic opening tool into the lip that lies between the screen and the plastic housing and gently prying it open. The best place to begin the screen removal is the bottom left side of the screen.
- Continue to work your way around the screen with the opening tool until all the clips are undone and the screen is free.
- Lift screen off of plastic cover to expose the internal components.

Step 2



- Locate the wide, golden connection on the bottom of the screen. Use the black spudger to peel away the tape holding it in place.
- Use tweezers to gently remove the plug from the screen.

Step 3



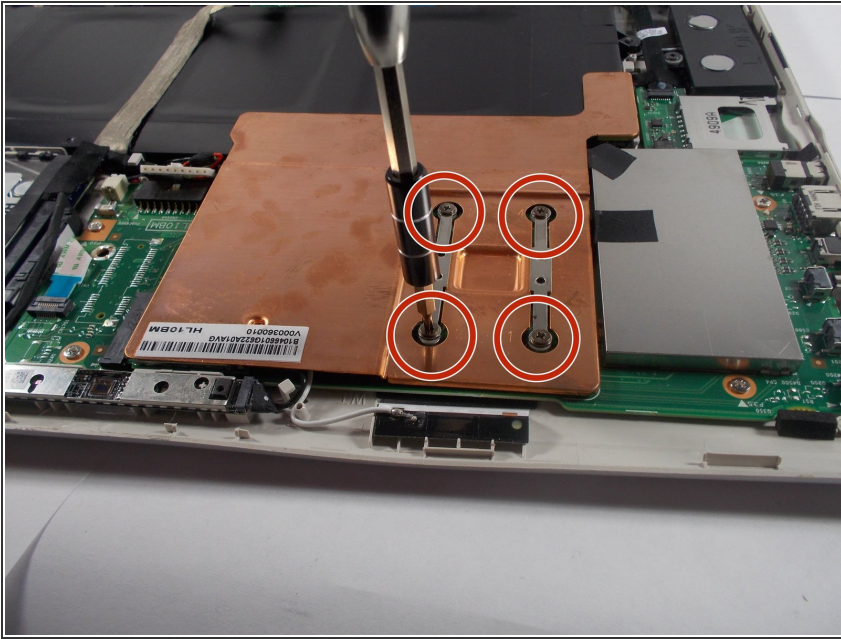
- Trace the black ribbon cable that begins on the right of the screen. This cable is connected to the upper part of the motherboard, which is located near the right speaker.
- Using tweezers, gently grasp the plug on the end of the ribbon cable and remove it from the motherboard.

Step 4



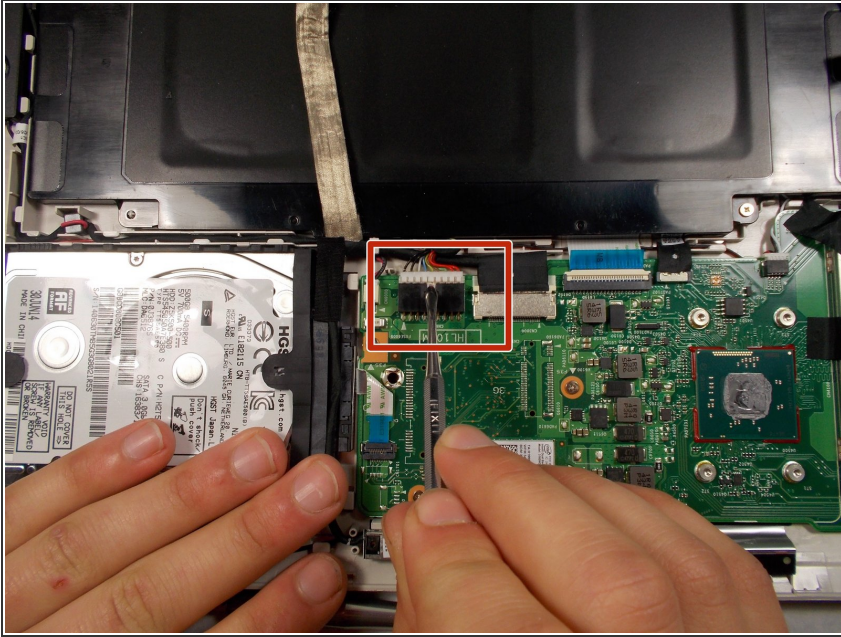
- Your screen is now completely detached from the internal components.

Step 5 — Battery



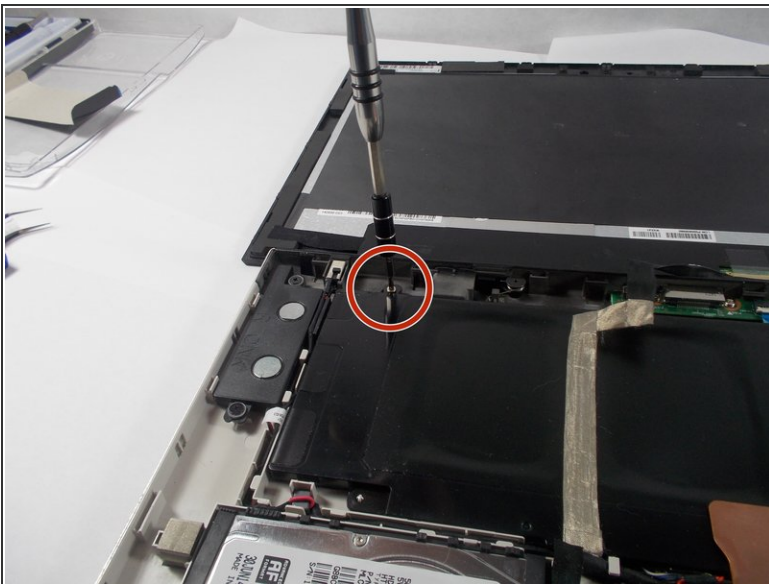
- Remove the copper shield by removing the four Phillips screws that hold the shield in place.

Step 6



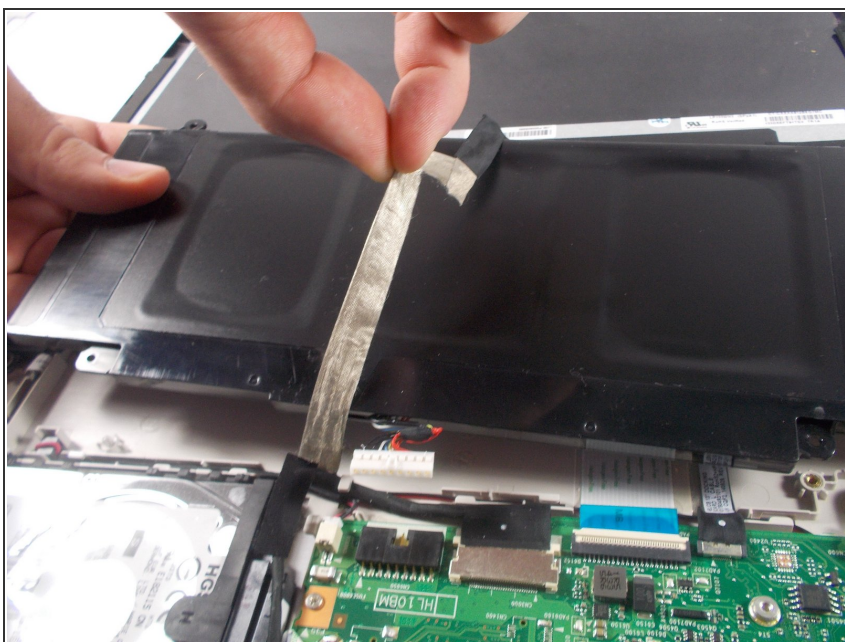
- Unplug the battery from the motherboard by pushing the white clip with a metal spudger. You can attempt to use the plastic spudger first, but it may be more difficult.

Step 7



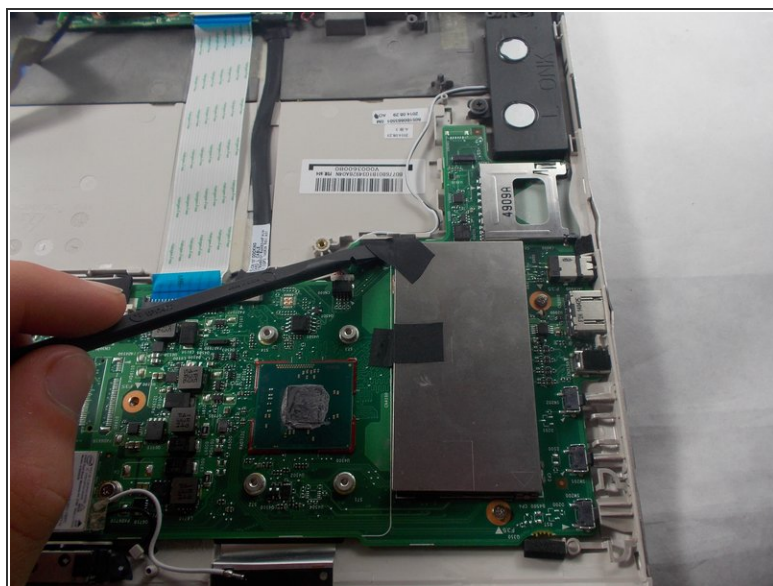
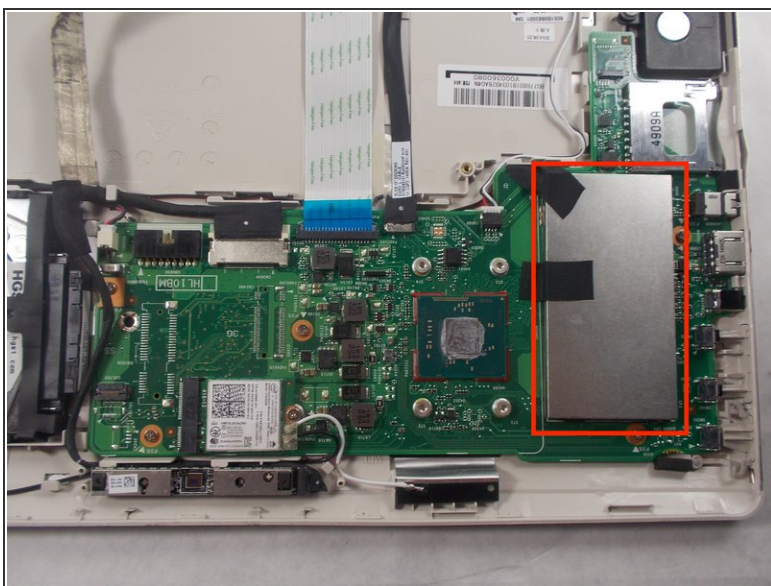
- Remove 2 6mm Phillips #0 screws holding the battery in place.

Step 8



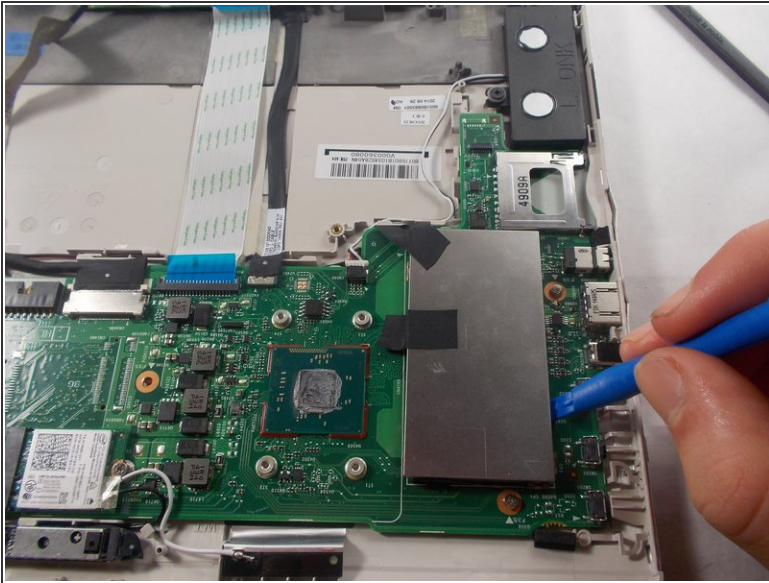
- Remove the battery by lifting on the left side, while holding the ribbon cable above it out of the way.

Step 9 — RAM Card



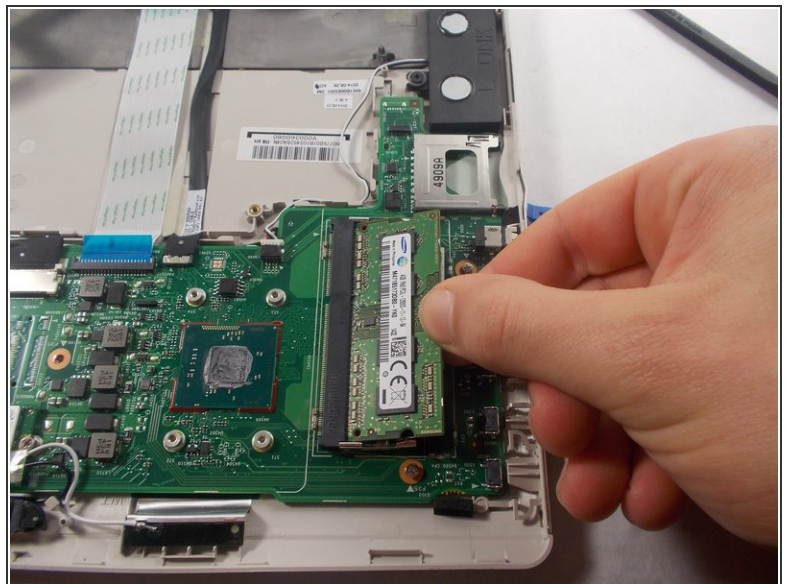
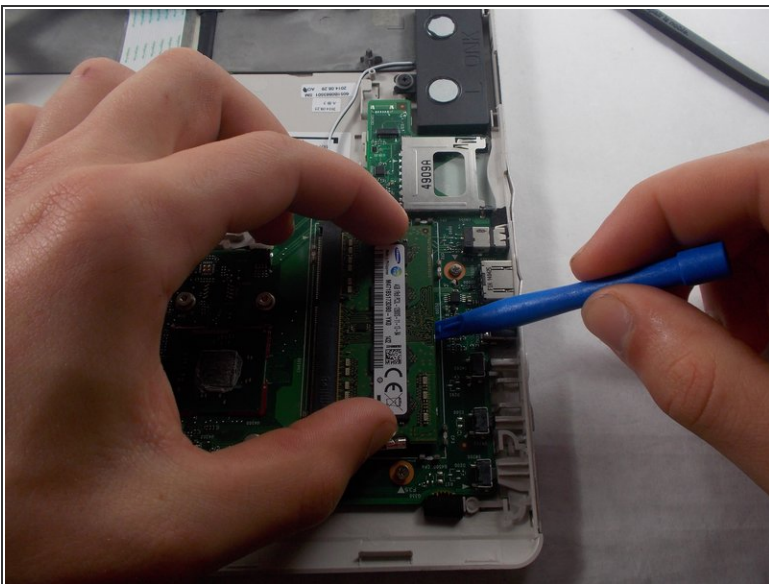
- Locate the metal cover that is protecting the RAM. It can easily be found in the corner (placed on top of the mother board).
- Then remove the two pieces of tape towards the edge of the cover.

Step 10



- Using a plastic opening tool, find your way between the cover and motherboard.
- Lift the plastic opening tool to unfasten the metal cover.

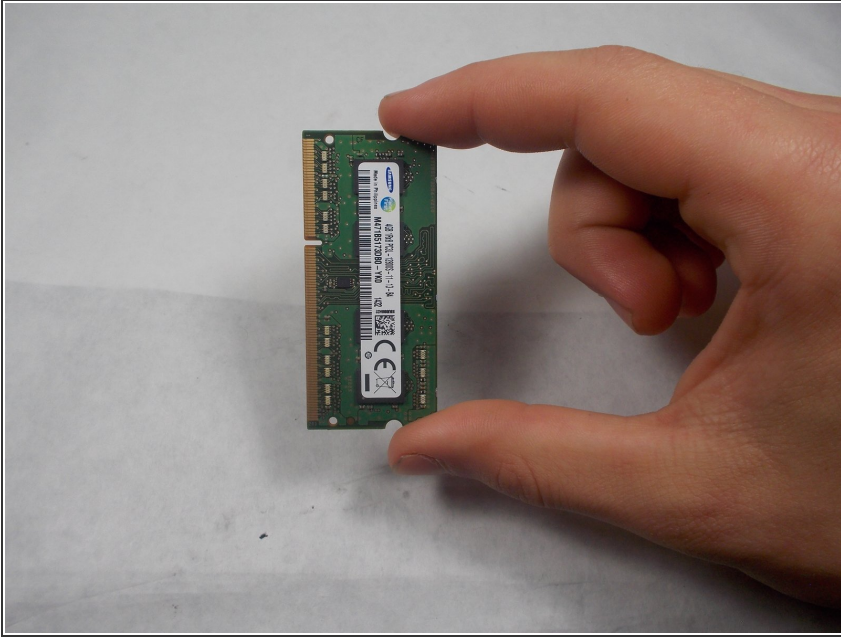
Step 11



- Use a plastic opening tool to slightly lift the RAM card itself.

⚠ Gently unplug the RAM from its slot.

Step 12



- Congratulations! You have safely removed your RAM Card.

To reassemble your device, follow these instructions in reverse order.