



Toshiba HD-A2 Power Button Replacement

Replace the jammed or broken power button in your Toshiba HD-A2.

Written By: Nouriyah Saleh



INTRODUCTION

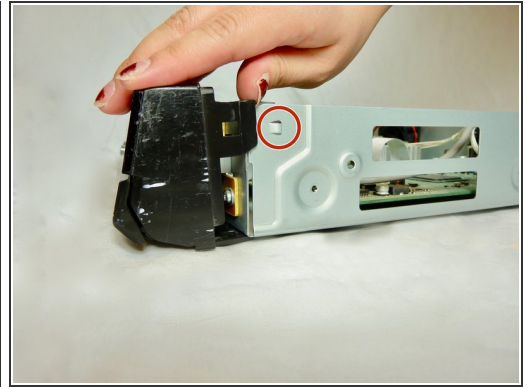
If you find that your power button is jammed or isn't working, use this guide to remove and replace the power button.



TOOLS:

- [Phillips #1 Screwdriver](#) (1)
-

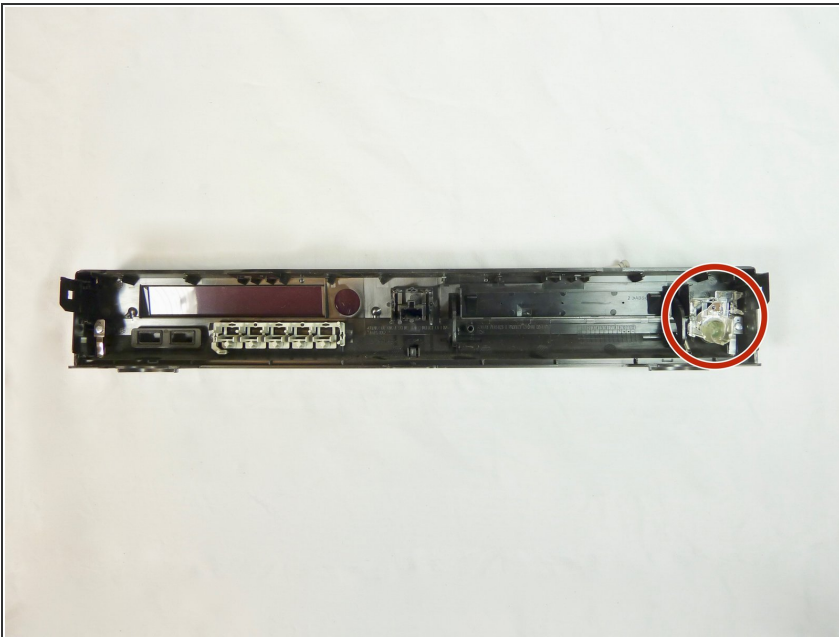
Step 1 — Power Button



- Using your hands, pop off the black console from each hinge surrounding the case.

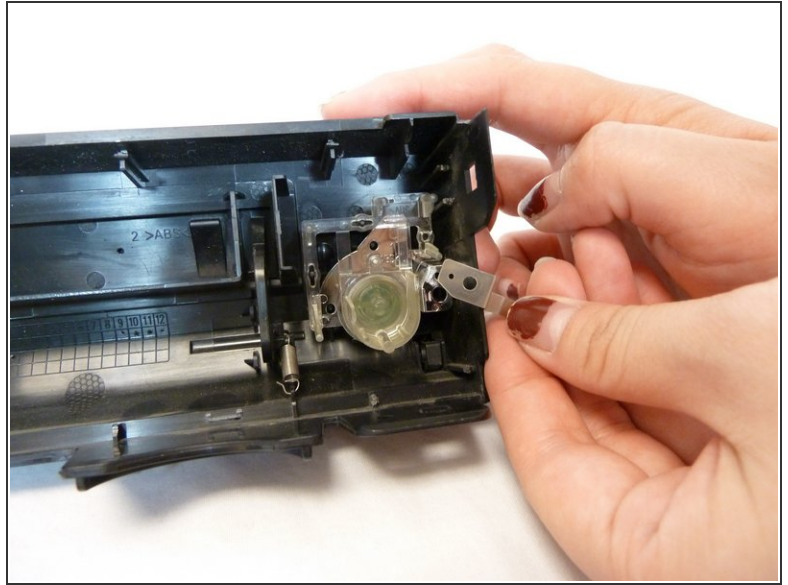
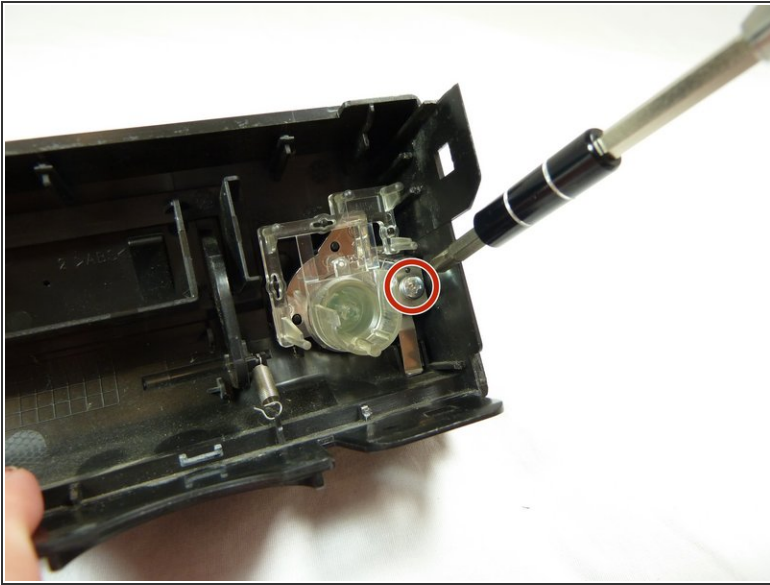
i There are a total of 7 hinges.

Step 2



- With the inside of the console facing up, the power button will be encased in clear plastic located on the right side of the console.

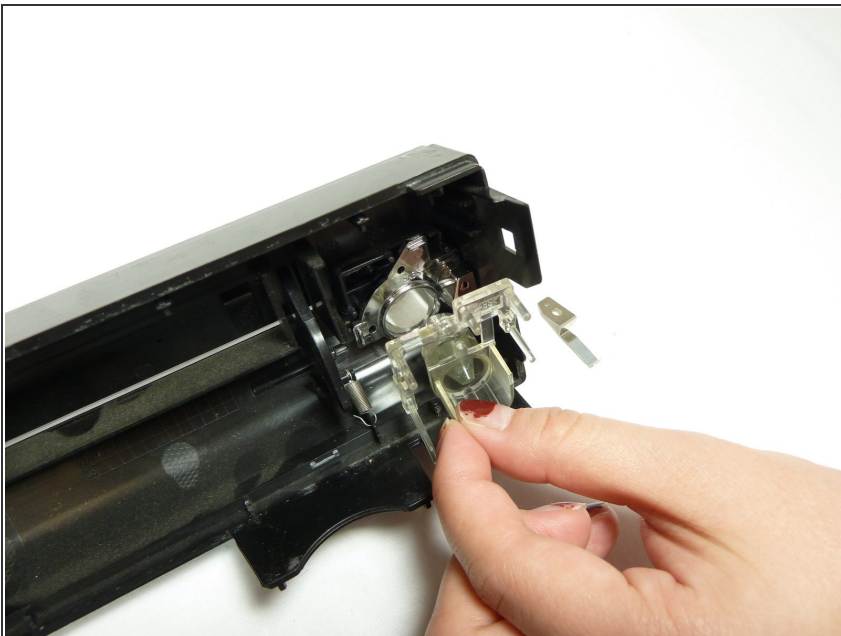
Step 3



- Use a Phillips #1 screwdriver to remove the single screw holding the power button to the console.

⚠ After taking out the screw, the small piece of metal underneath will come loose. Carefully place this part aside.

Step 4



- Using your fingers, gently pull out the power button. You can push it from the outside to help loosen it from its hinges.

To reassemble your device, follow these instructions in reverse order.