



ThinkPad 10 (20C1) Teardown

A brief overview after removing the back cover of my Thinkpad 10, Model: 20C10024MB

Written By: Quintus “Quanten” Tunnel

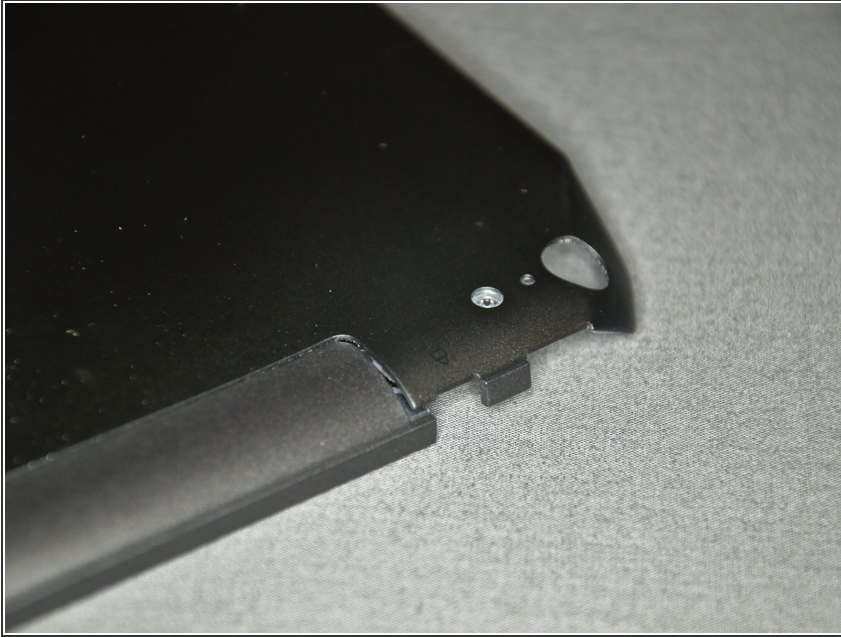




TOOLS:

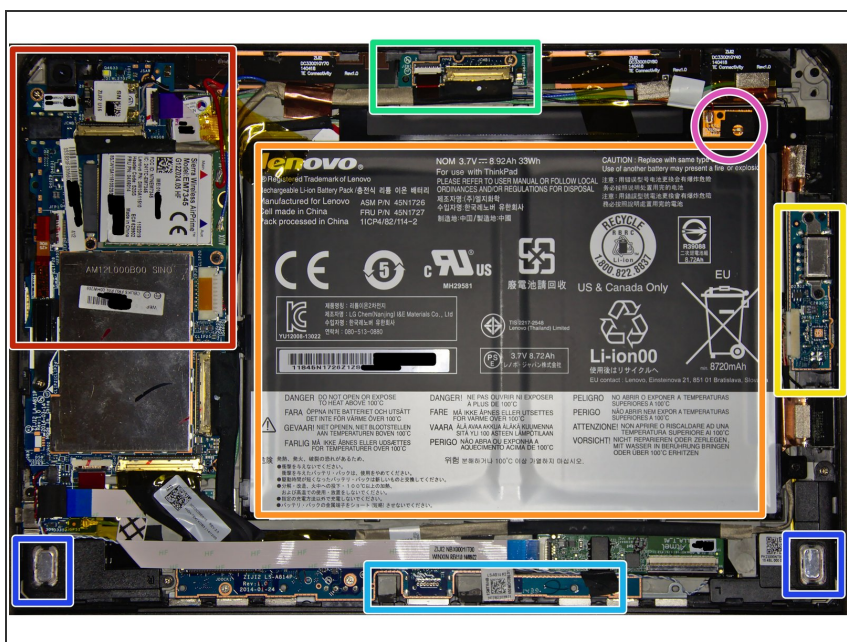
- [iFixit Opening Tools](#) (1)
-

Step 1 — Open the Backcover



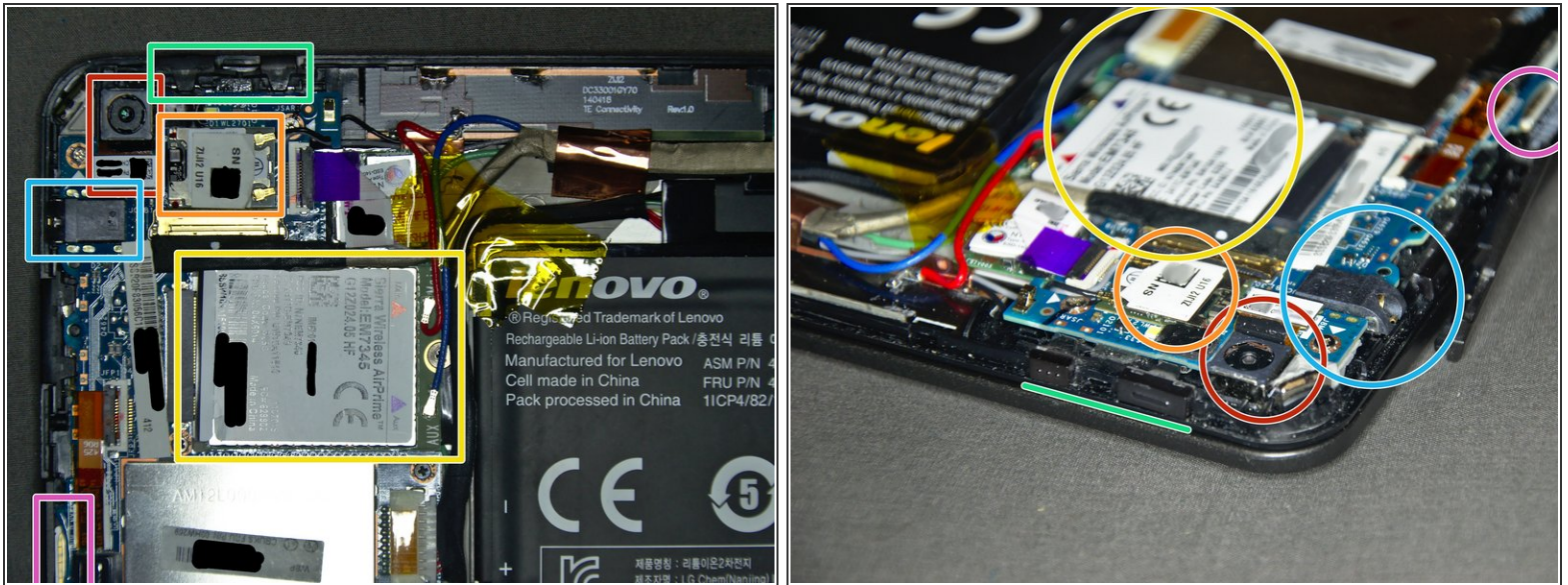
- You should follow this video:
<https://support.lenovo.com/de/de/videos/...>
- ★ A plastic Opening Tool is maybe helpful
- I have done it in a different way:
 - i You need a bag, that is not providing too much protection, a wet street and a bicycle with working breaks.
 - ⚠ I don't recommend this strategy, because you will most likely also teardown some of your body. (I'm okay, but I won't do it again)

Step 2 — Overview



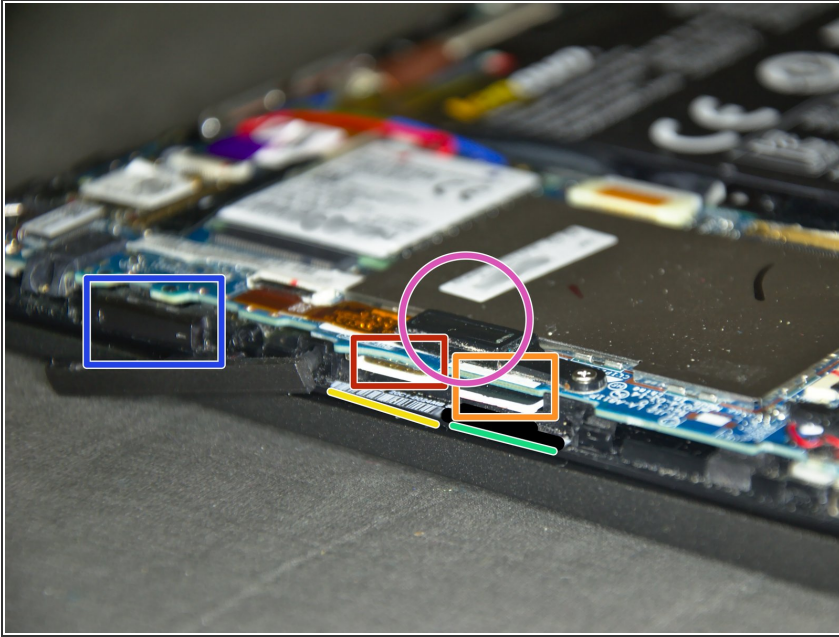
- We take a closer look later
- It's the battery, a 3.7V 8.72Ah Li-ion. Partnumber: 45N1729 or 45N1727 or 45N1726
- The PCB of the frontfacing camera and luminance sensor. P/N: 45N1729
- The power connector board with the USB Type A connector. P/N: 00HW298
- Speakers, P/N: 45N1729
- Board with docking connections. P/N: 00HW296
- The red LED of the ThinkPad Logo

Step 3 — Closer Look



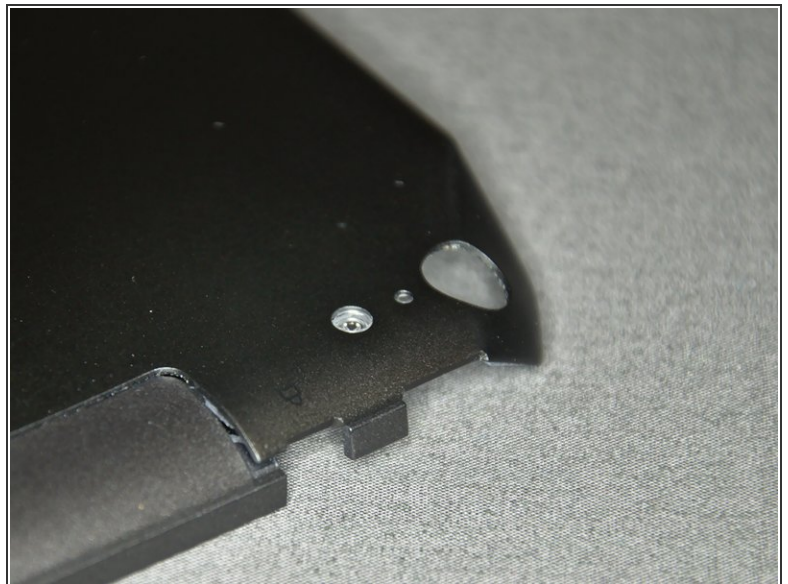
- 8 MP Rear Facing Camera. P/N: 04X1392
- Wifi Module. It's compared to the WWAN Module pretty tiny
- WWAN UMTS Module. Gets you connected nearly everywhere. P/N: 04X6014
- SIM Card
- The buttons for power and rotation lock. P/N: 00HW309
- 3.5 mm Headphone jack, or why this device is better than an iPhone 7.

Step 4 — Slots on the side



- SIM Card. Contacts are facing backwards
- MicroSD Card. Sadly it is impossible to boot from it
- The model number, here: 20C10024MB
- There would be the serial number
- The volume control
- The fingerprint reader

Step 5 — The Alternative Opening Method



- The aluminium back cover has absorbed very much energy during the impact. It's really difficult to bend it back. To my luck, nothing else was damaged

 Even without the backcover, the tablet is working fine