



ZTE Quest n817 Motherboard Replacement

This guide will provide instructions on how to replace your ZTE Quest's motherboard.

Written By: Eric Loureiro



INTRODUCTION


If you do need to replace your ZTE Quest's motherboard, this guide will take you through the process of opening your device and fully removing the motherboard.

TOOLS:

- [Spudger](#) (1)
 - [Tweezers](#) (1)
 - [JIS #000 Screwdriver](#) (1)
 - [iFixit Opening Tools](#) (1)
-

Step 1 — Battery



 Ensure that the phone is turned off before starting.

- Orient the device so that the inset on the right side of the device is facing you.
- Insert the spudger into the inset and carefully remove the back panel.

Step 2



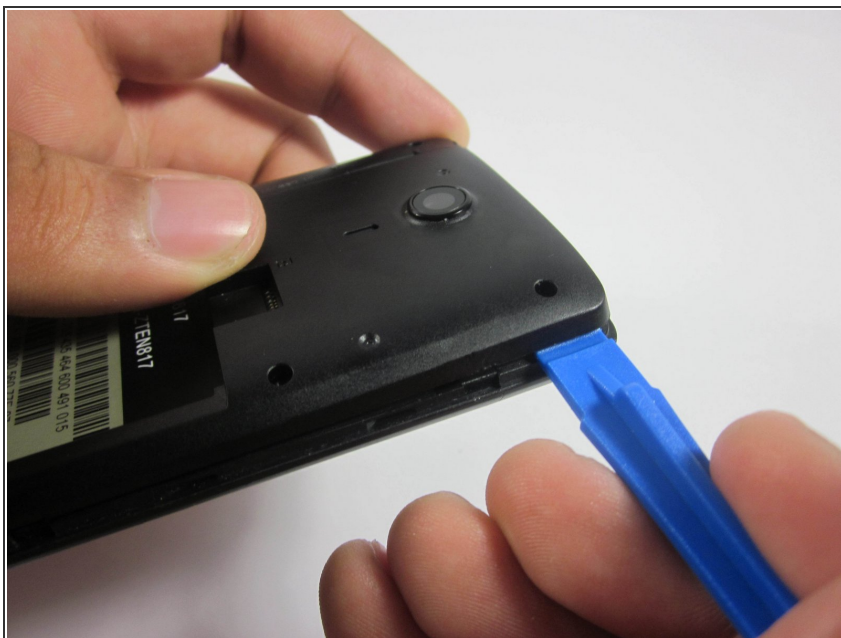
- Use the ribbon to remove the exposed battery.

Step 3 — Motherboard



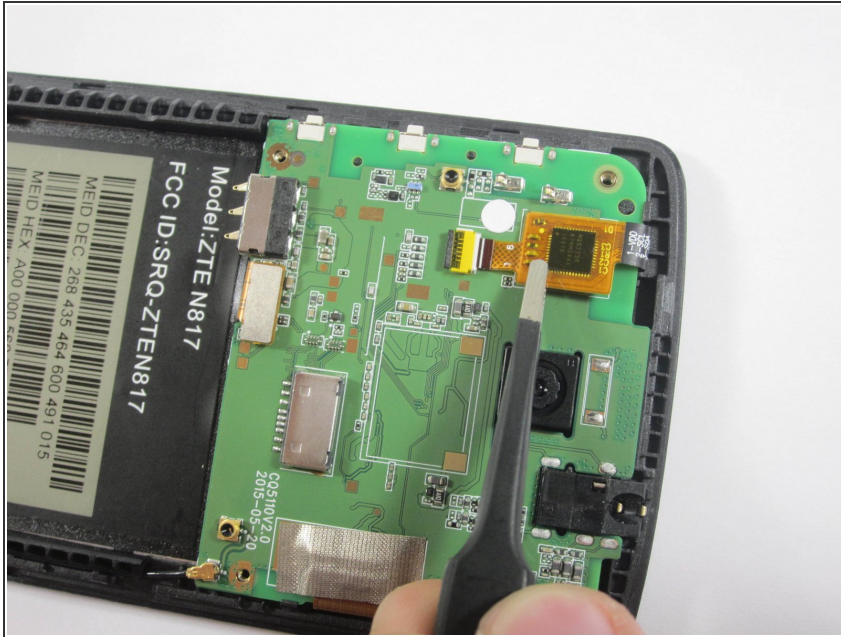
- Use the JIS #000 screwdriver to remove the six 3.0mm screws placed in the back of the ZTE Quest.

Step 4



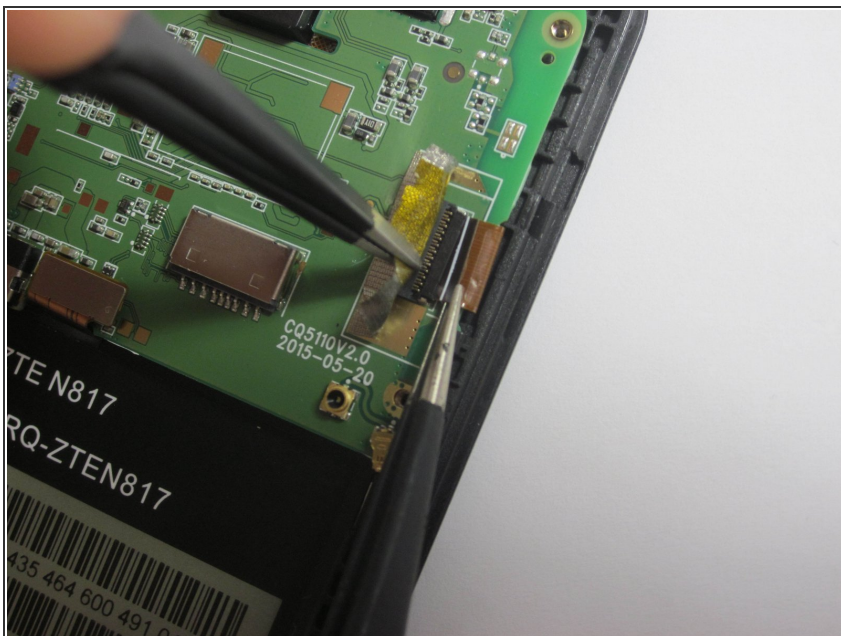
- Carefully pry open the back panel with the plastic opening tool.

Step 5



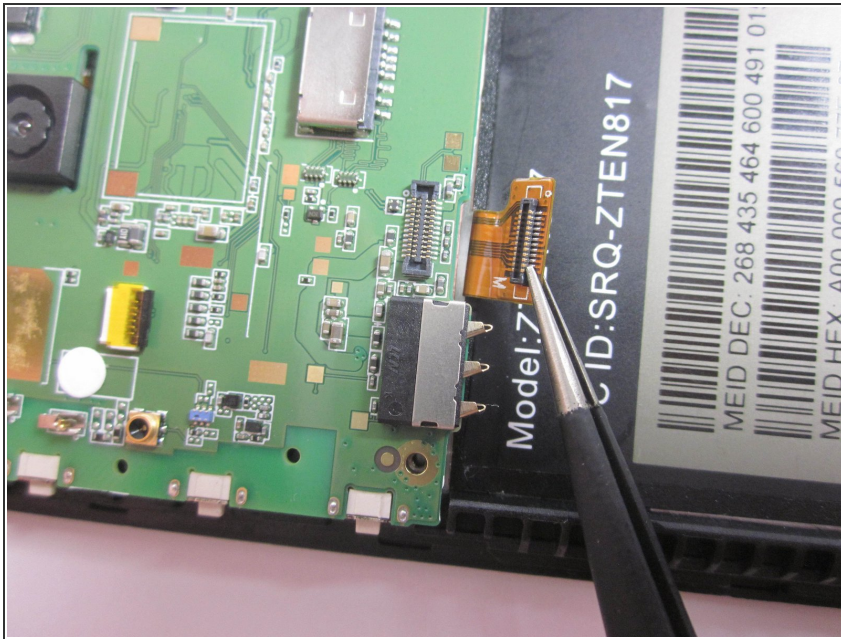
- Use a pair of tweezers to gently disconnect the ribbon cable connector from its socket.

Step 6



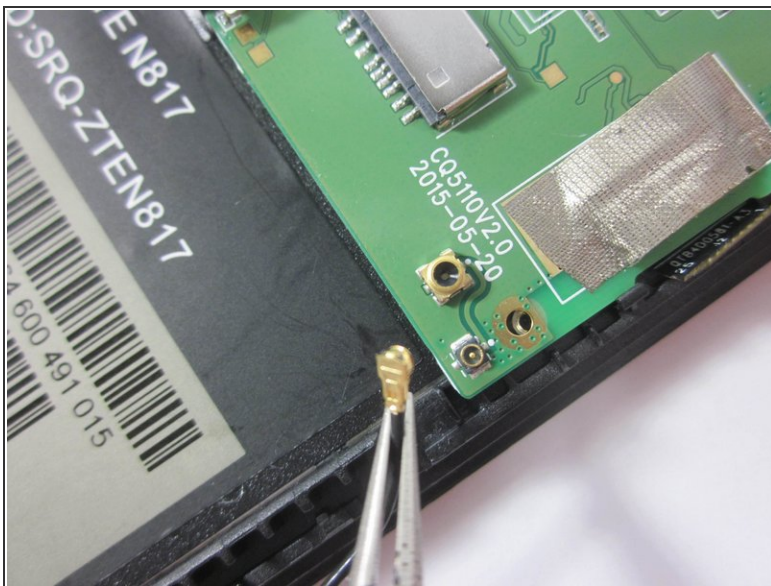
- Pull back the tape encasing the brown ribbon cable connector.
- Remove the ribbon cable from its socket.

Step 7



- Unplug the flat-top connector by using a pair of tweezers to pry up each side before removing the connector from its socket.

Step 8



- Disconnect the coaxial connector in the bottom right corner of the motherboard.

To reassemble your device, follow these instructions in reverse order.