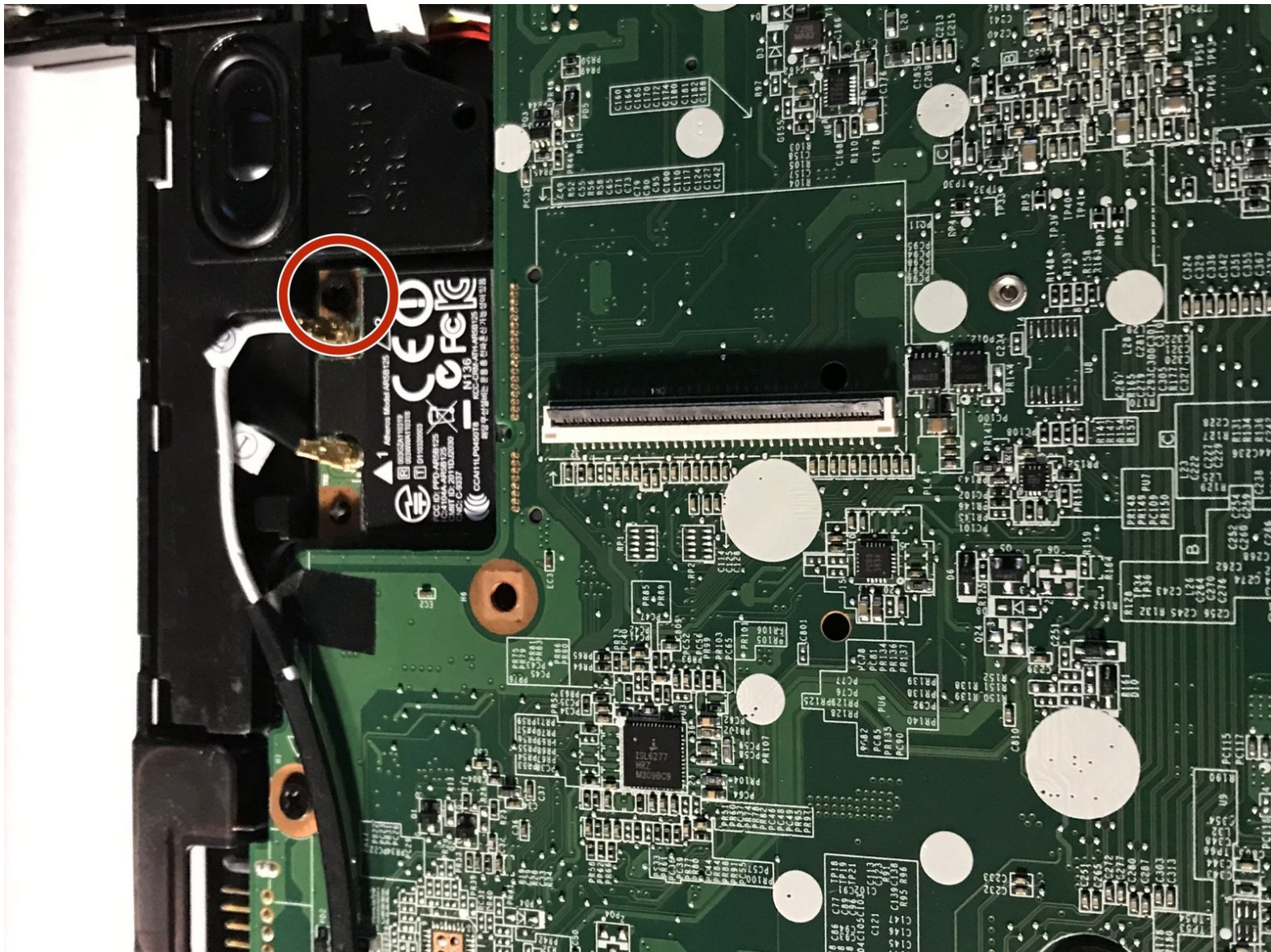




HP Pavilion 15-b109wm WLAN Module Replacement

This guide will show you how to replace the WLAN Module in a HP Pavilion 15-b109wm.

Written By: Stephen Gacioch



INTRODUCTION

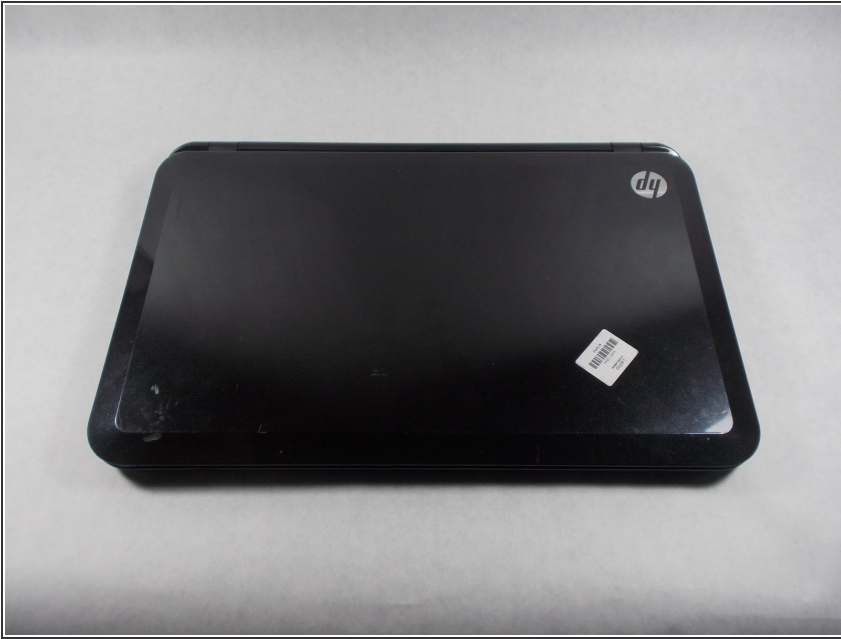
This guide will show you how to replace the WLAN Module in a HP Pavilion 15-b109wm. This will take between 30-45 minutes, if done correctly. Remember to be careful and take your time since you will be working near the motherboard.



TOOLS:

- [JIS #1](#) (1)
 - [Heavy-Duty Spudger](#) (1)
 - [iFixit Opening Tools](#) (1)
-

Step 1 — Battery



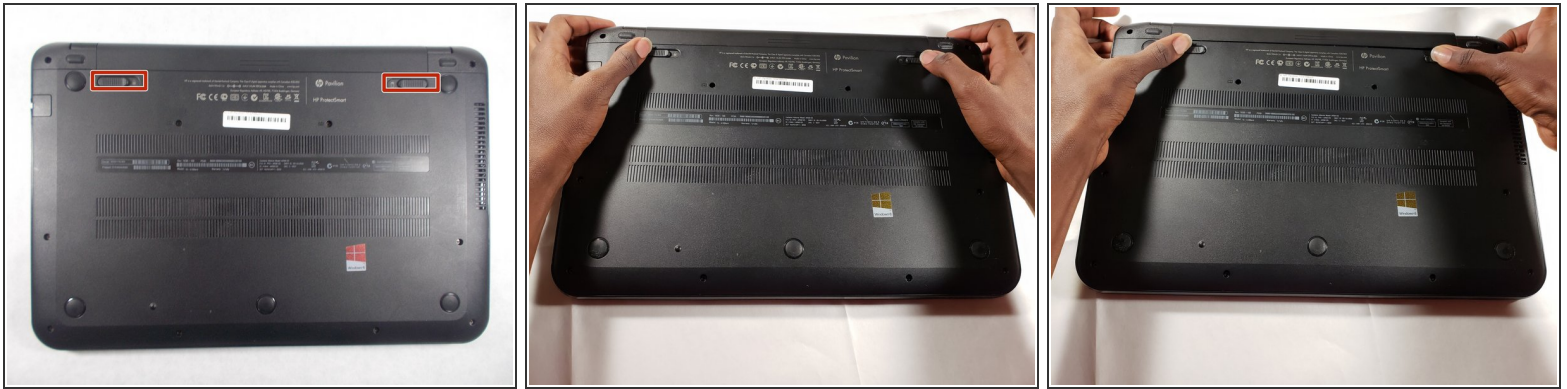
- Power off the device and disconnect from any power source.

Step 2



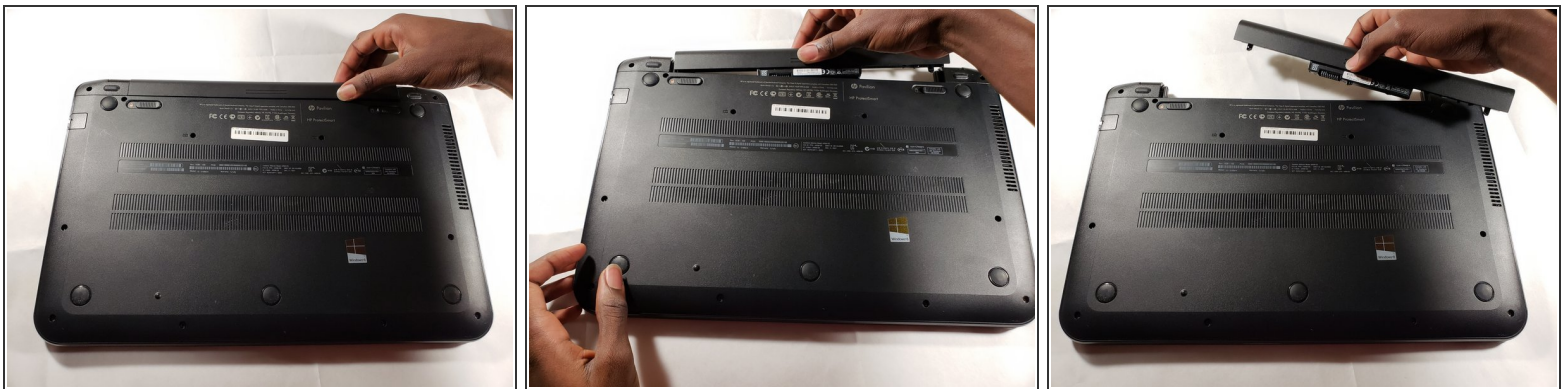
- Turn the device upside down and ensure the back of the device is facing you.

Step 3



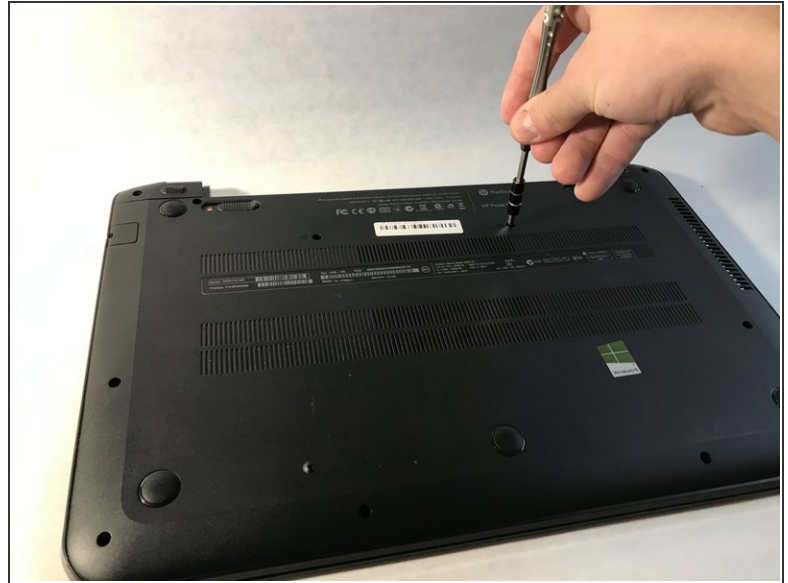
- Push both buttons towards one another simultaneously. The battery slightly pops out.

Step 4



- ⚠ Pull out the battery from the device's battery slot.

Step 5 — Keyboard



- Use JIS #1 screwdriver to remove the eleven 6 mm screws.

Step 6



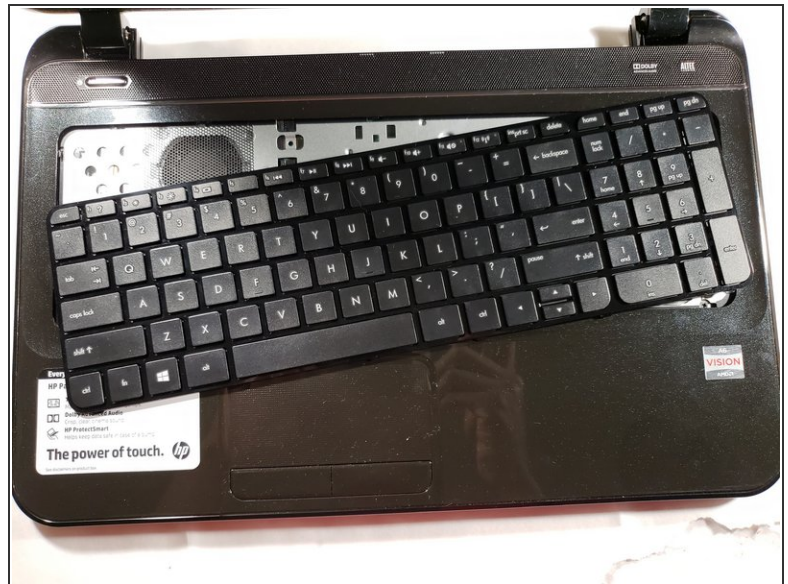
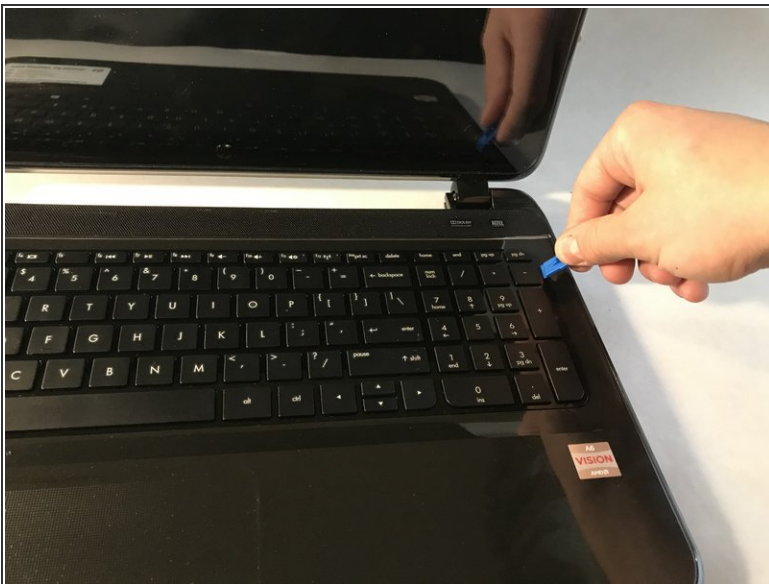
- Locate the two screw holes that allow access to removing the keyboard.
- ⓘ There is a keyboard sign beside both keyboard access holes.

Step 7



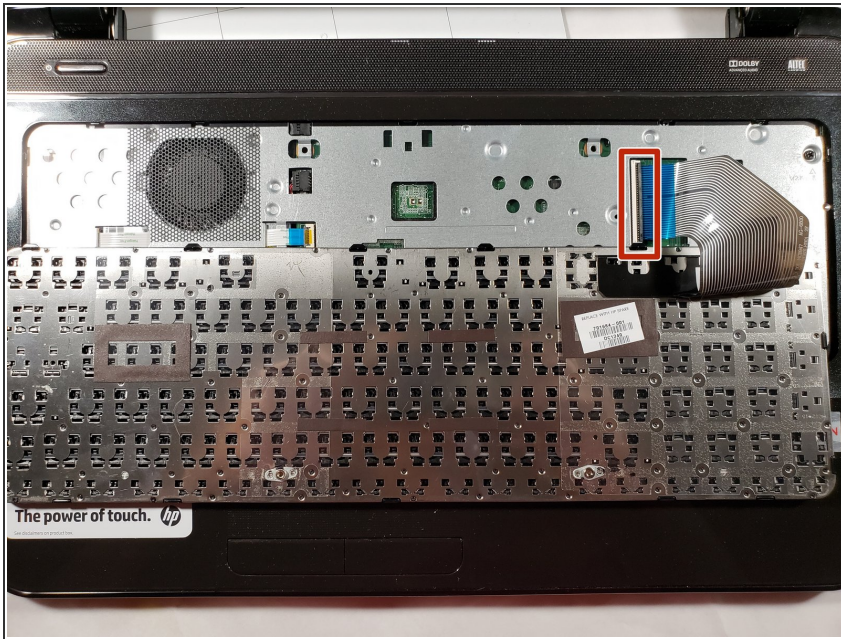
- Turn the device onto its side.
- Using a heavy duty spudger, gently disengage the keyboard.

Step 8



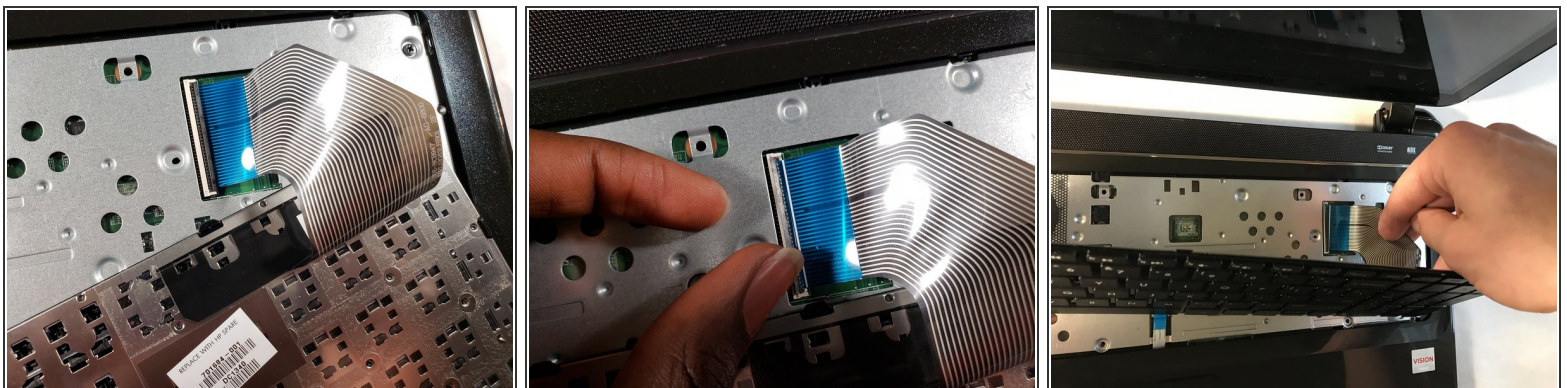
- Using a plastic opening tool, release the keyboard clips.

Step 9



- Tilt the keyboard to expose the *Zero Insertion Force* connector to which the keyboard cable is attached.

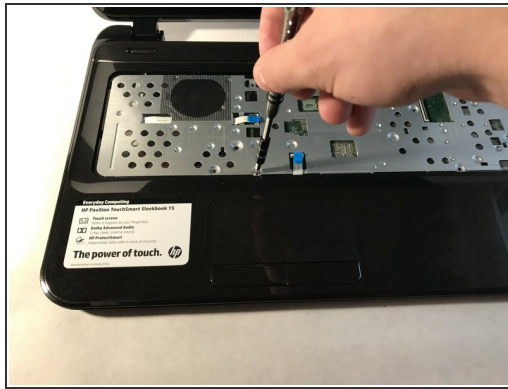
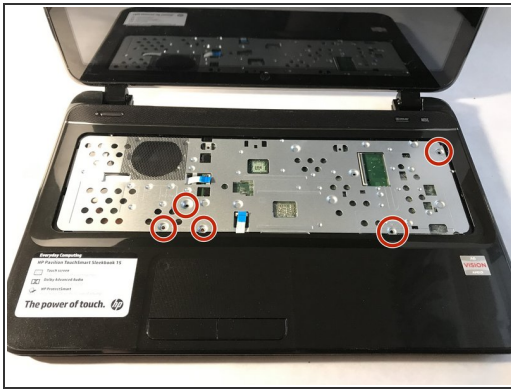
Step 10



- Disconnect the keyboard cable from the motherboard by detaching the *Zero Insertion Force* connector.

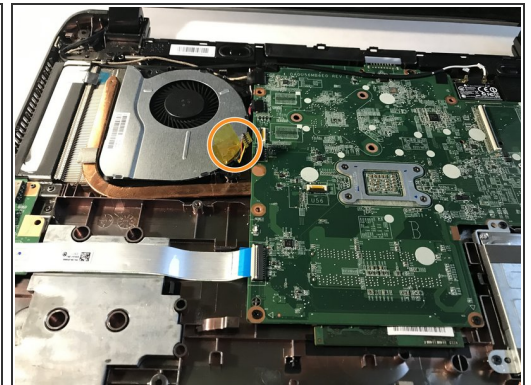
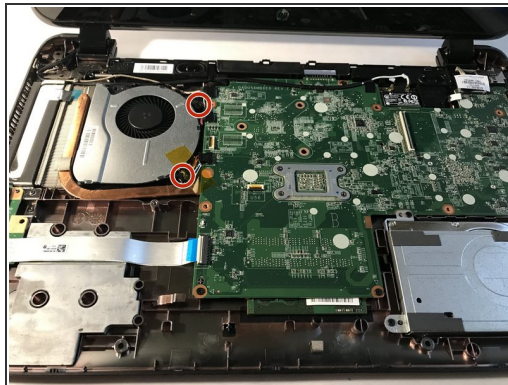
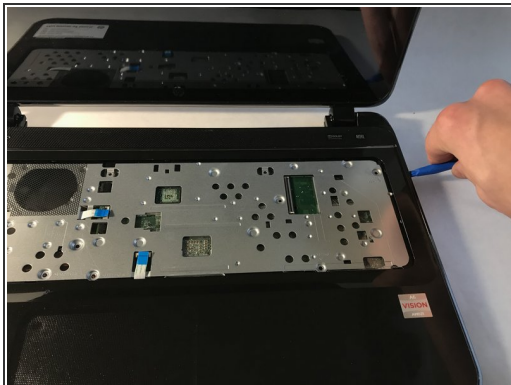
i To detach the connector, release by lifting the black plastic tab up.

Step 11 — Fan



- Using a JIS #1 screwdriver, remove the five 5mm screws.
- Detach the power button cable.
- Detach the touch pad cable.

Step 12



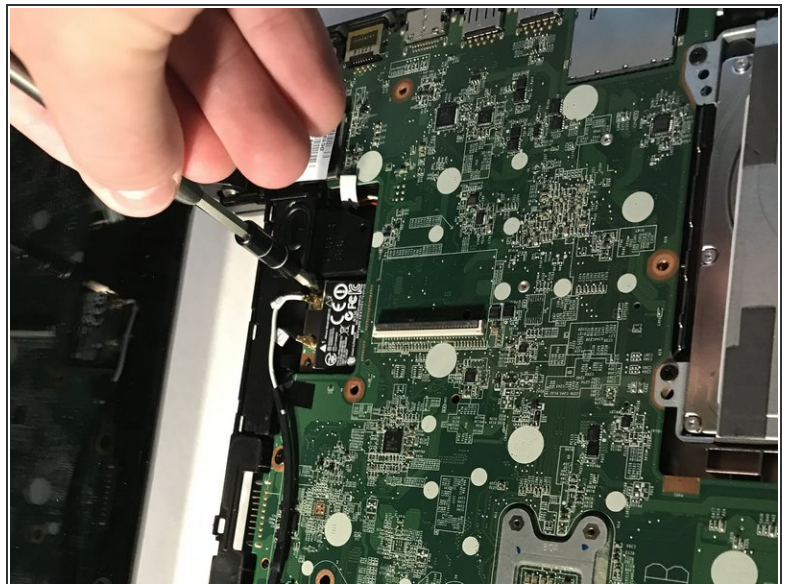
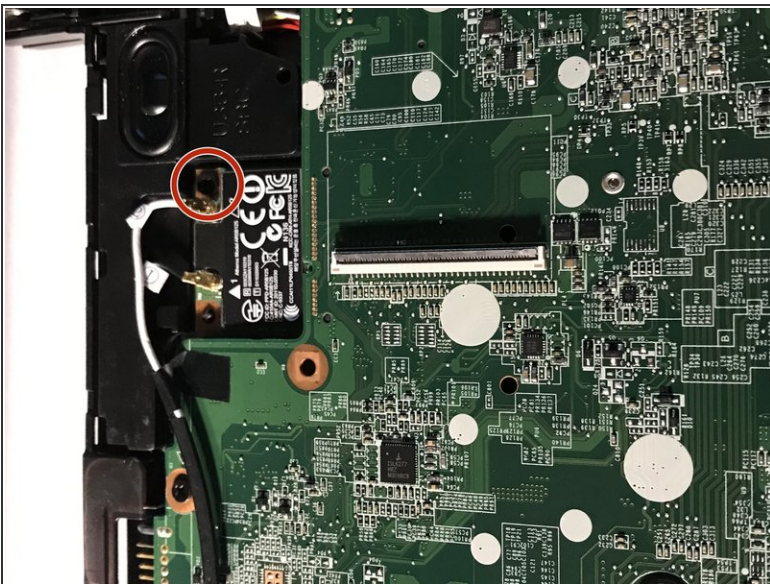
- Using a plastic opening tool, pry open the top cover.
 - Unscrew the two 5 mm screws using a JIS #1 screwdriver.
 - Gently, pull to detach the fan cable.
- ⚠ Be careful so you do not damage the motherboard.

Step 13



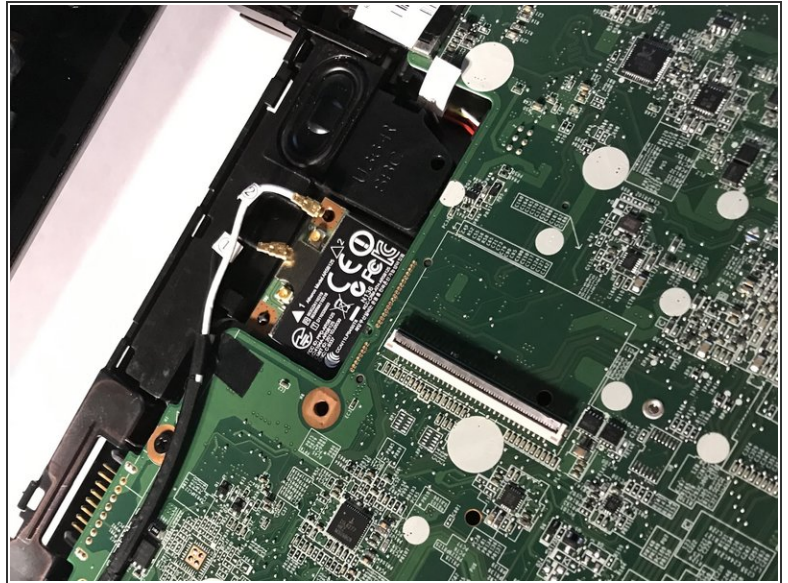
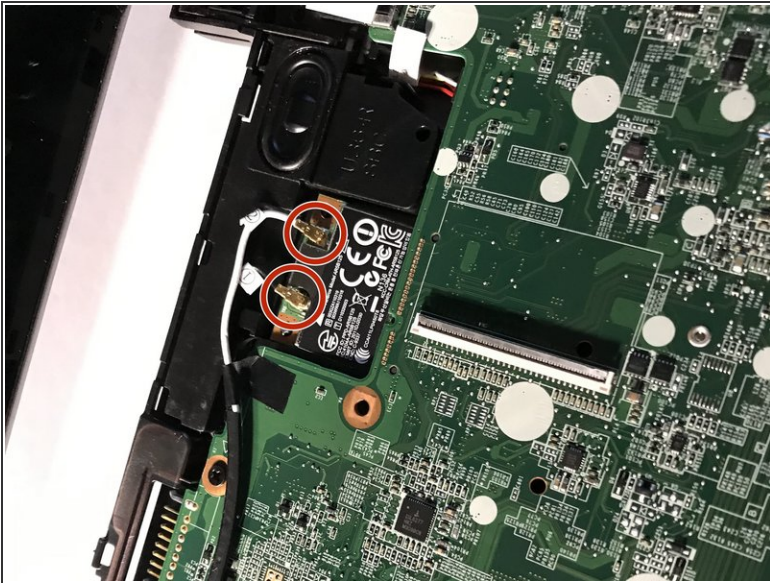
- Carefully remove the fan from its slot.

Step 14 — WLAN Module



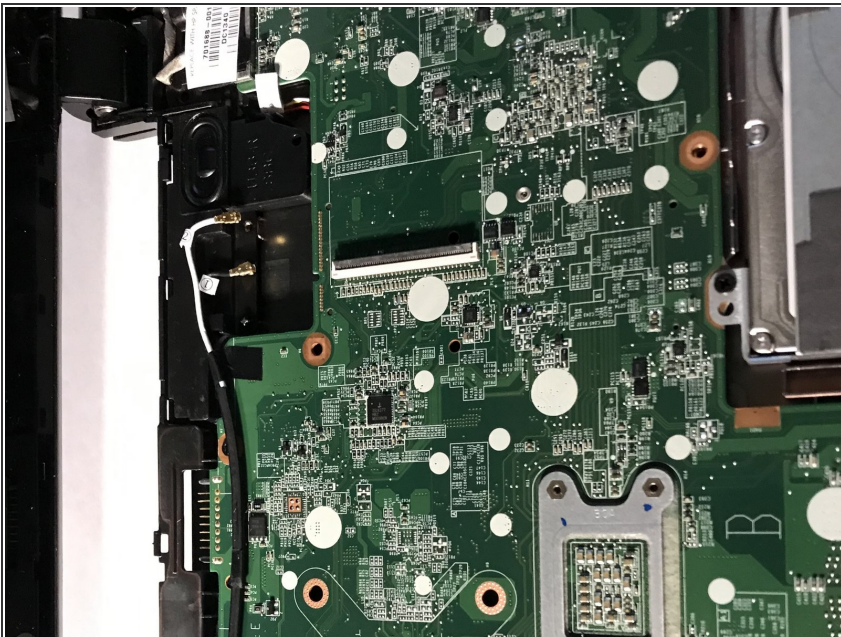
- Remove the 5 mm screw using a JIS #1 screwdriver.

Step 15



- Detach the WLAN Module cords.

Step 16



- Remove the WLAN card and replace it with a new one.

To reassemble your device, follow these instructions in reverse order.