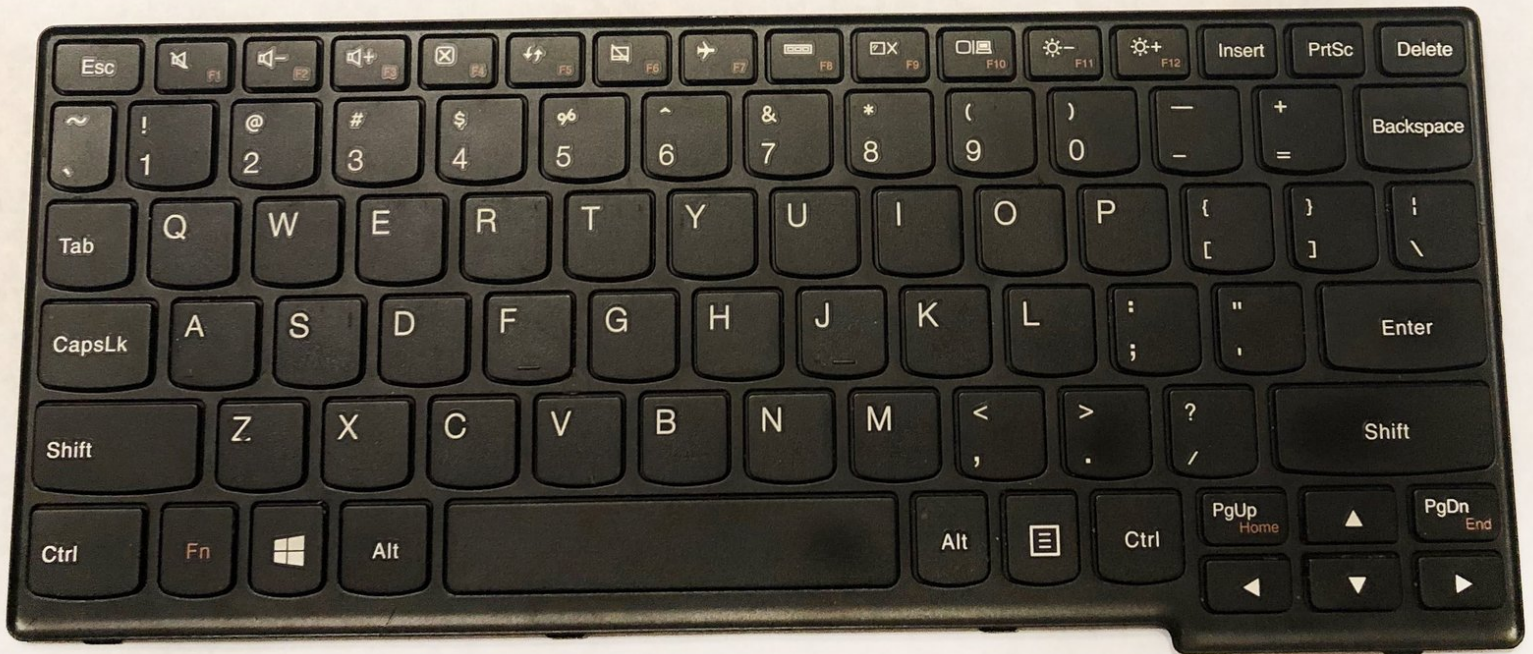




Lenovo S20-30 Keyboard Replacement

This guide will provide you with the necessary steps to properly replace a Lenovo S20-30 keyboard.

Written By: ILEANISSE SOTO



INTRODUCTION

Keyboard may need replacing for several reasons ranging from spilling something on your keyboard to multiple keys not working properly. You will need a new standard replacement keyboard for Lenovo S20-30 to continue the replacement. Keyboards costs around \$22-\$50. This guide shows step by step how to replace your Lenovo S20-30 keyboard. Make sure to carefully read the steps and keep track of parts disassembled so they are not lost.



TOOLS:

- [iFixit Opening Tools](#) (1)
 - [Spudger](#) (1)
 - [Phillips #0 Screwdriver](#) (1)
 - [Phillips #000 Screwdriver](#) (1)
 - [Metal Spudger](#) (1)
-

Step 1 — Battery



- Flip the Lenovo S20-30 over so that the bottom panel is facing upward.

Step 2



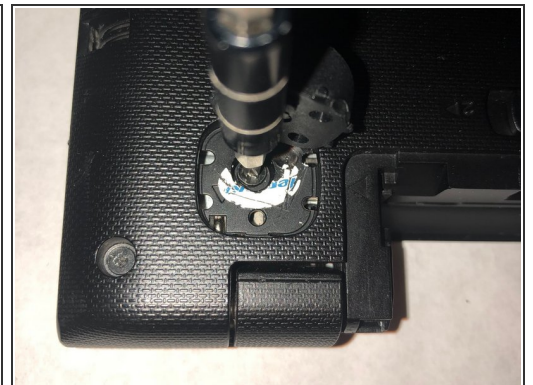
- Slide the manual battery latch to the unlock position, so that the red is showing.

Step 3



- Slide and hold the spring-loaded battery latch on the other side (right) while sliding the battery out of the computer.
- Grab new Lenovo S20-30 battery for replacement.

Step 4 — Keyboard



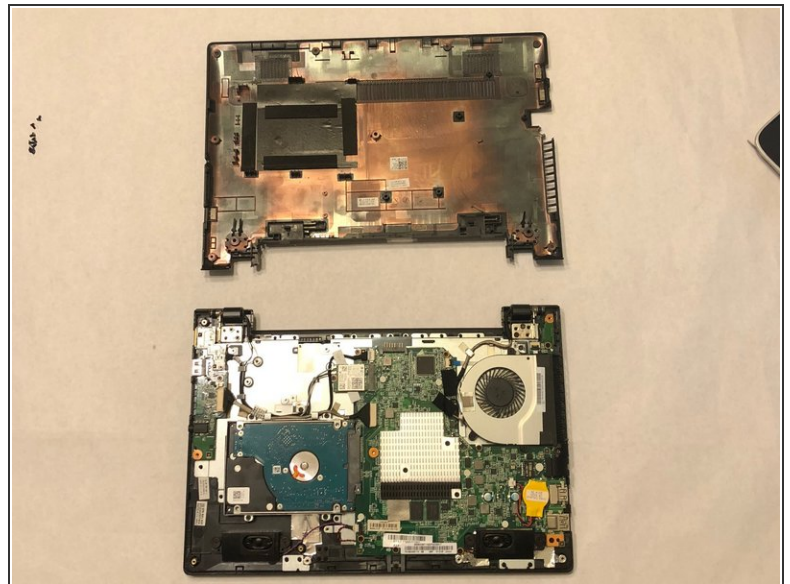
- Remove the two front rubber feet using a long metal spudger.
- Use your Phillips #0 screwdriver to remove the two M2.5 x 5mm flat-head screws located underneath the pads.

Step 5



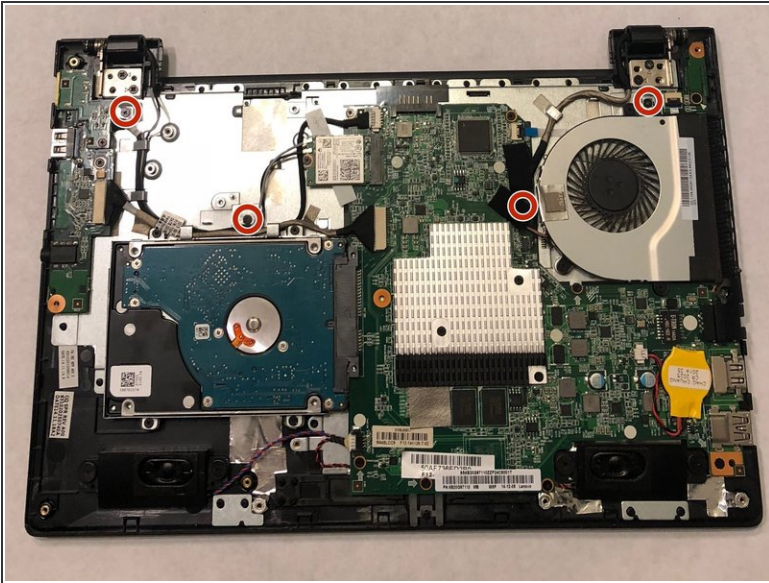
- Use the Phillips #0 screwdriver to remove the nine M2 x 4mm flat head screws located on the outer edges on the back of the laptop.
- ⓘ Make sure to keep these screws separated from future screws that will be disassembled throughout this process.

Step 6



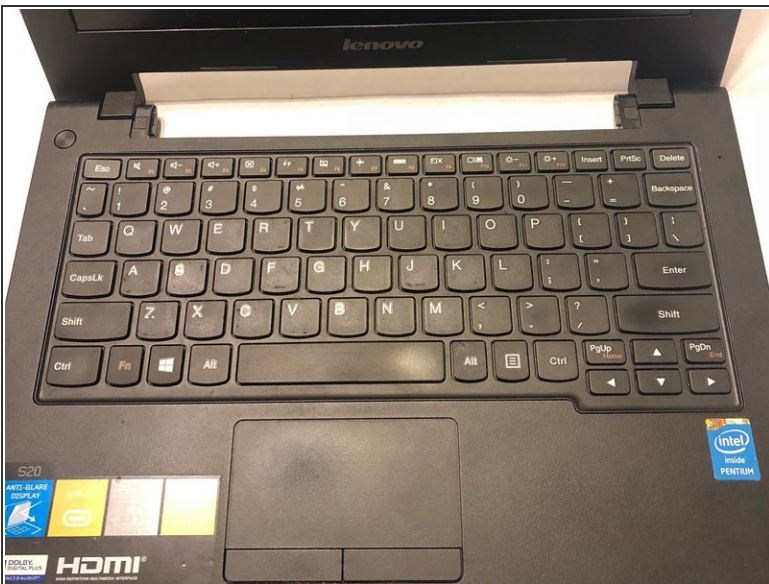
- Use the long metal spudger to pry open the bottom half of the laptop.
- Gently lift the cover off to reveal the motherboard.

Step 7



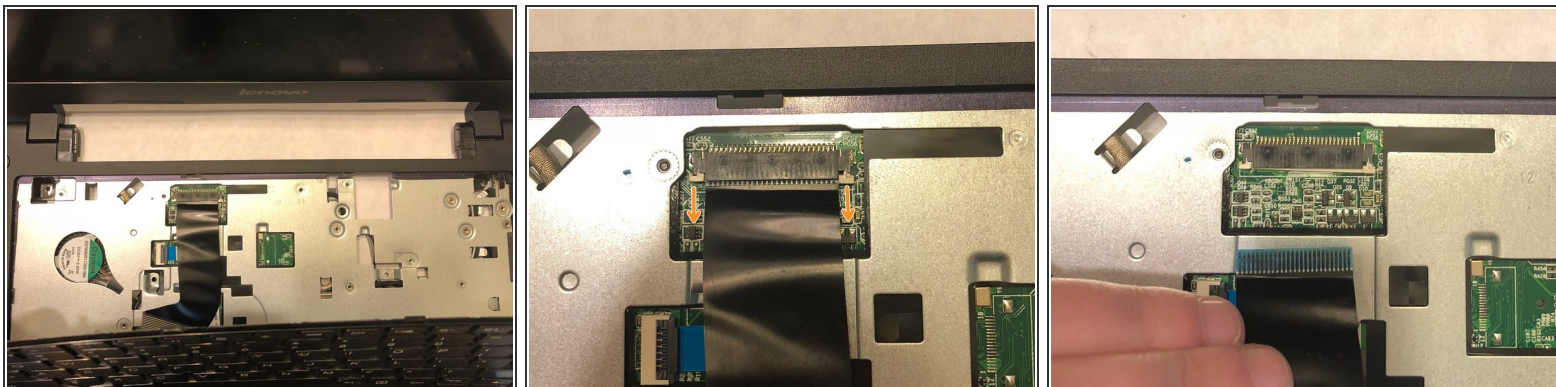
- Remove the four M2 x 3mm flat-head screw using a Phillips #000 screwdriver.

Step 8



- Flip over laptop and open the lid to have access to the keyboard.
- Use a plastic opening tool to pry apart the keyboard.

Step 9



- A connector is attached to the keyboard.
- Remove it by gently pulling it outward.

Step 10



- Grab replacement keyboard to insert back into place.

To reassemble your device, follow these instructions in reverse order.