



Pebble Time Steel - repairing of a non working button

A non working button that lost its gum is made reusable with some drops of superglue.

Written By: Vasco Dunker



INTRODUCTION

The watch is opened and i think it won't be waterrestant any more after this.



TOOLS:

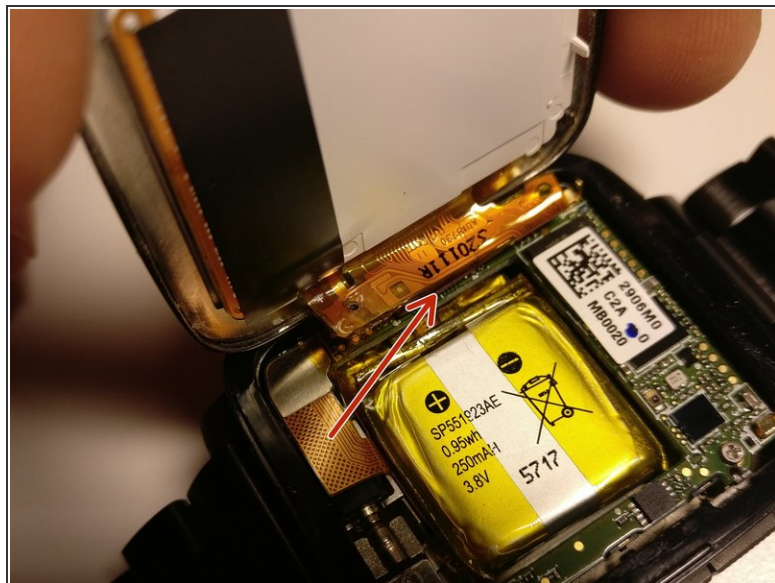
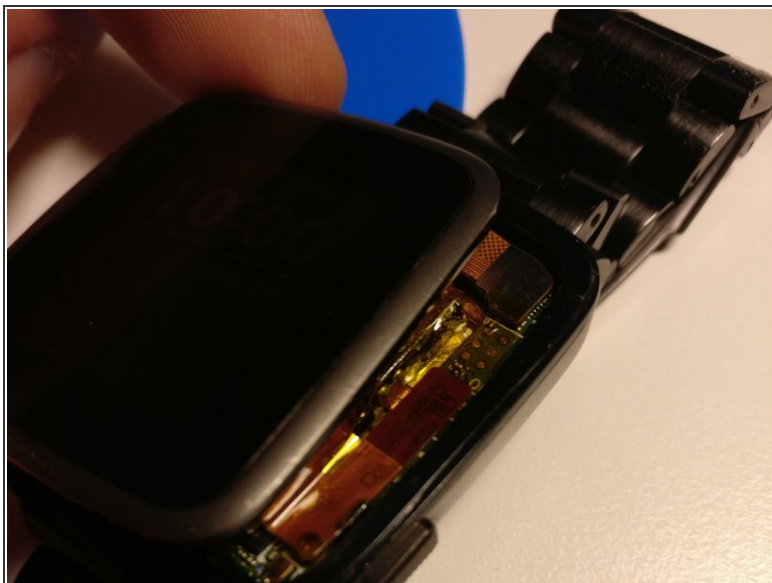
- [Super Glue](#) (1)
- [iFixit Opening Picks set of 6](#) (1)
- [New Item](#) (1)
- [Pinzette](#) (1)



PARTS:

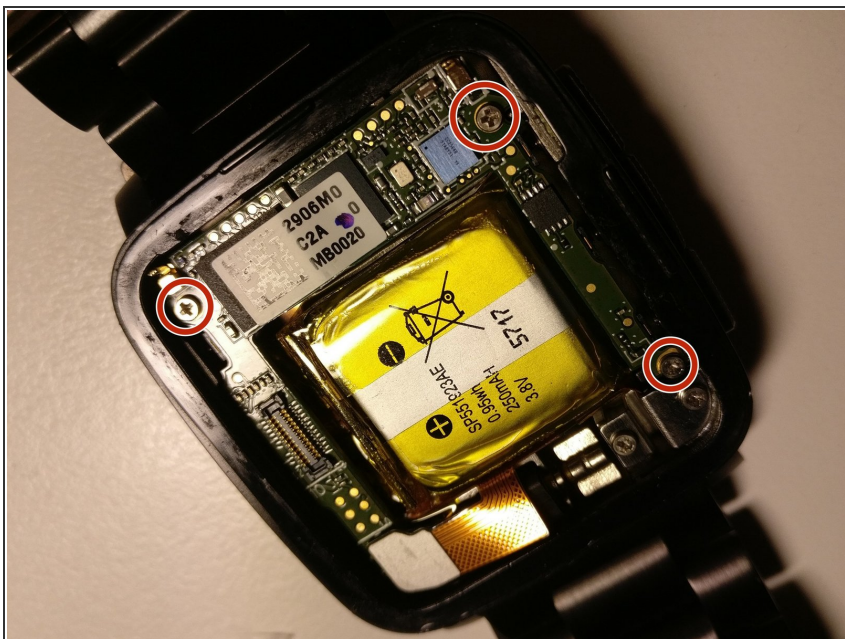
- [New Item](#) (1)

Step 1 — Repairing of a non working button



- With opening picks we start to open the watch by lifting up the display bottom from left (about seven o'clock) in counterclockwise direction. In the left side there is a flexband that has to be disconnected.

Step 2



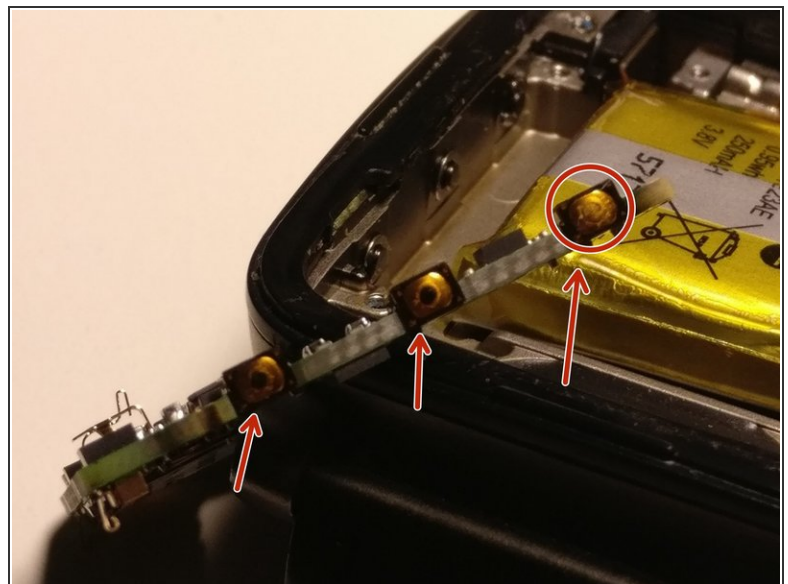
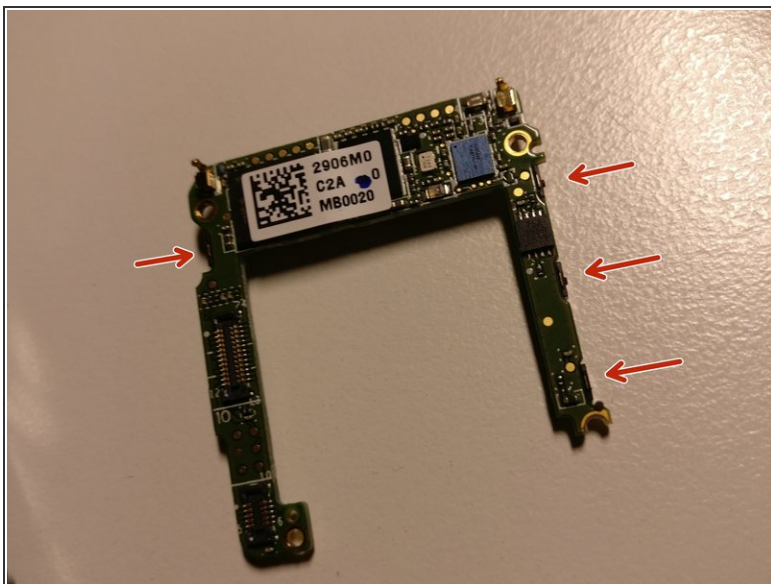
- Three screws are removed.

Step 3



- down on the left, a Flexband is carefully folded up and loosened. Below it, another screw is visible.
- Remove this screw.

Step 4



- Then the board can be removed carefully.
- If you look closely at the keys, you can see that the defective key no longer carries rubber dabs.
- With a needle, the smallest drops of superglue are dripped into place of the missing rubber.

Step 5



- Now put everything together in reverse order. Remove the sealant before applying the display and stick it around with a new Tesa 61395 Tape 1mm.
- Then insert the display and press down.

Repeat the steps in reverse order to reassemble your device.