



Netgear Arlo 2 Camera HD Security System

SYNC Button Replacement

How to replace a Netgear Arlo 2 Camera HD Security System SYNC button.

Written By: Katherine McCombs



INTRODUCTION

This guide will explain the process of removing the Sync button on the device. It is important to remember that if you are having connection problems it could be a simple hardware problem. To best use this guide the Phillips 00 screwdriver is recommended. The Phillips 000 or 0 may work as well, please note that the smaller the screwdriver the higher chances of stripping the screw. It is also recommended to have a plastic opening tool (blue) to gently pull the device apart and a bowl or container to keep the small and easily lost screws in.



TOOLS:

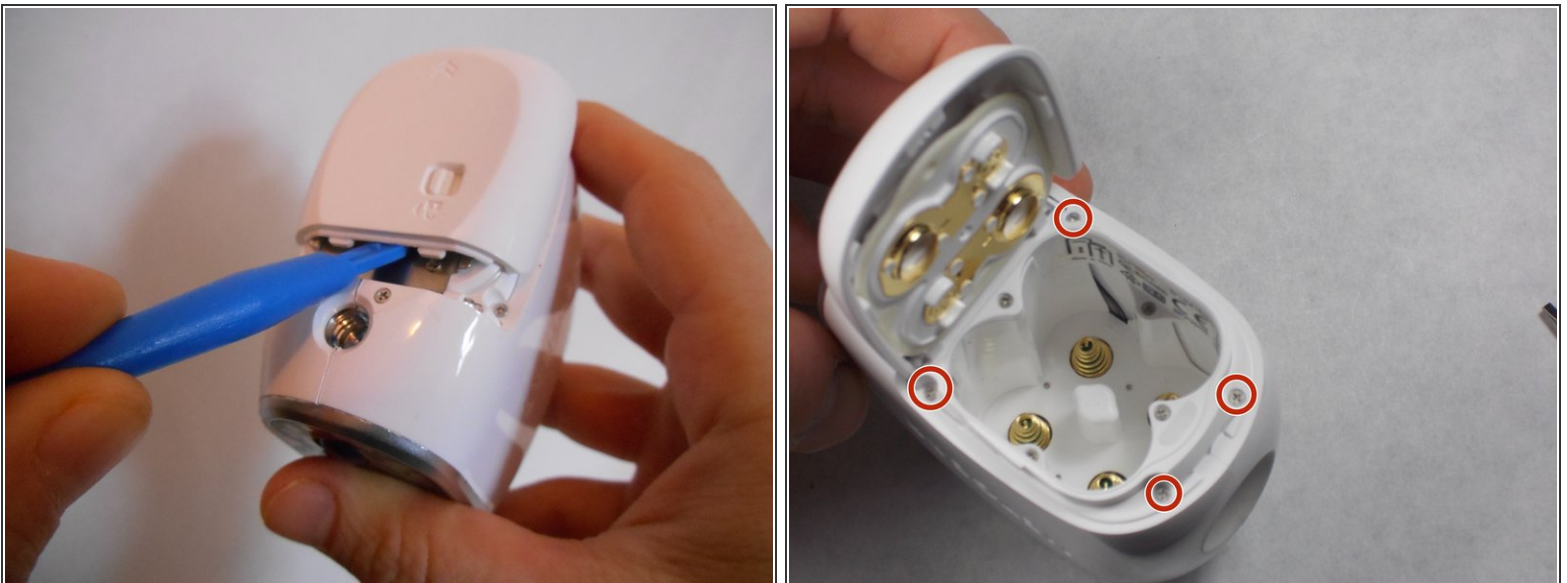
- [Phillips #00 Screwdriver](#) (1)
- [iFixit Opening Tools](#) (1)

Step 1 — Case



- Unscrew the two 3.0 mm Phillips #00 screws on the bottom of the camera.
- Open the battery compartment on the bottom by pushing the switch marked in orange to the side and pushing the bottom of the camera back, sliding it open.

Step 2



- Remove the bottom piece of the case over the battery compartment by placing a plastic opening tool underneath the edge of the case and prying it up.
- Unscrew the four 3.0 mm Phillips #00 screws on the outside of the battery pocket.

Step 3



- When facing the camera lens, the left panel of the case will be removed first (more steps are needed for the right panel).
- Place the plastic opening tool between the two pieces of the case and pry them apart from the bottom.
- Gently pull the side of the case off as it comes loose.

Step 4



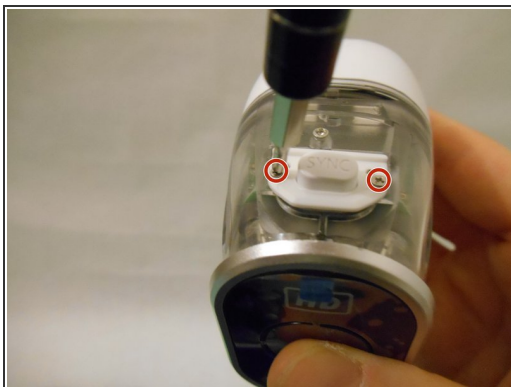
- Unscrew the smaller 3.0 mm Phillips #00 screw in the center on the back of the device.
- Flip the camera over and unscrew the center 3.0 mm Phillips #00 screw above the SYNC button.

Step 5



- Using the plastic opening tool, gently pry the right panel from the device.
- Replace either side of the plastic case as needed.

Step 6 — SYNC Button



- Unscrew the two 3.0 mm Phillips #00 screws on either side of the SYNC button.
- Remove the white plastic covering.
- Remove the white SYNC button.

To reassemble your device, follow these instructions in reverse order.