



Nintendo Wii U Teardown

We have another Nintendo teardown for U. We got...

Written By: Brittany McCrigler



INTRODUCTION

We have another Nintendo teardown for you U. We got [our hands on the Wii U](#), and despite the temptation to escape into the world of Super Mario, our spudgers got the better of us.

Wii'd love to give U the latest teardowns and news updates, so follow us on [Twitter](#) or like us on [Facebook](#).

TOOLS:

[Heat Gun](#) (1)

[Phillips #00 Screwdriver](#) (1)

[Spudger](#) (1)

[Y1 Tri-point Screwdriver](#) (1)

[Tweezers](#) (1)

Step 1 — Nintendo Wii U Teardown



- Yes, we love tearing devices apart, but the TV-shattering, Wii Remote-related accidents around the office are getting out of hand. It's time to explore alternative remote options, and what better place to start than the Wii U?
 - IBM Power®-based multi-core processor
 - AMD Radeon-based High Definition GPU
 - 8 GB or 32 GB internal storage with external USB storage and external USB hard drive support
 - 6.2 inch, 854 x 480 pixels LCD touch-screen with motion control and front-facing camera
 - Near-Field Communication (NFC) functionality

Step 2



- Let's check out the port side(s)!

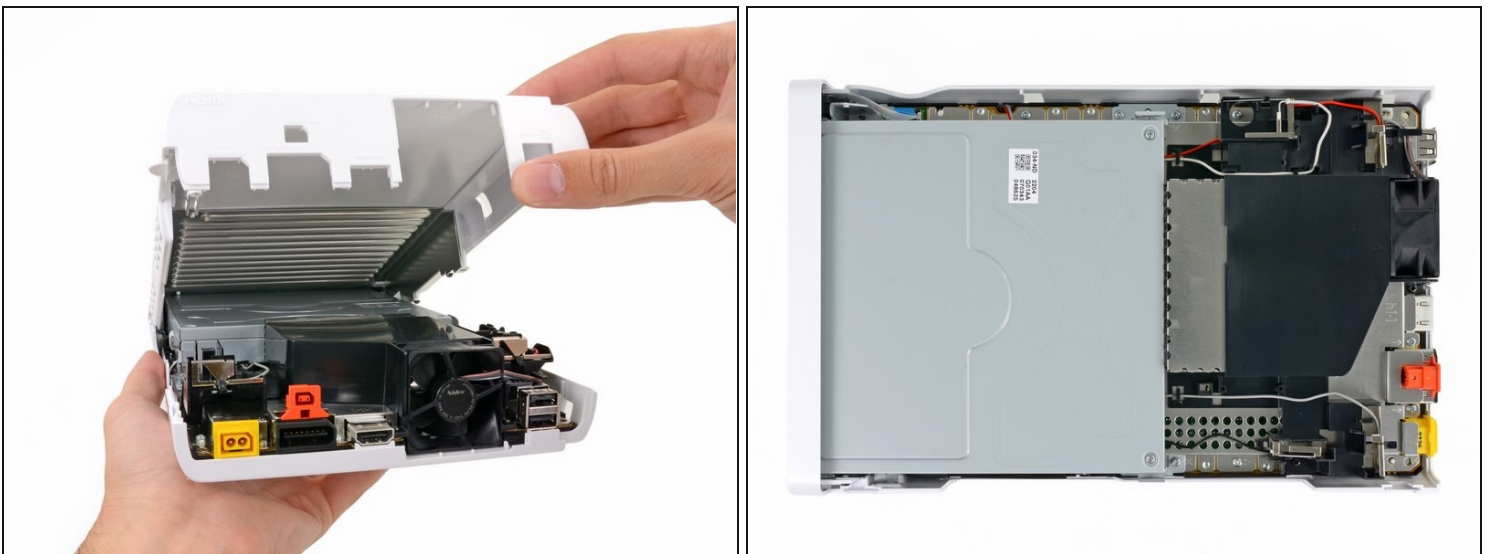
- Disc slot
- Sync button
- SD card slot
- USB 2.0 ports (4 total)
- HDMI port
- AV Multi Out
- Sensor Bar Connector

Step 3



- What's this? A secret [coin that Mario left](#) behind?
 - Sadly, it's just the CMOS battery. However, we won't judge you if you run and jump on a flagpole.
- Hidden screws won't keep us out; some quick sticker removal and a turn of the screwdriver free the top case.
- Need some killer tools yourself? [Wii've got what U need.](#)

Step 4



- We see a [familiar face](#) as the top case comes off.
- There is nothing initially surprising as we get our [first glimpse of the U](#). The optical drive and heat sink dominate the majority of the console's internal Wii-al estate, and are considerably beefier than those found in the Nintendo Wii.

Step 5



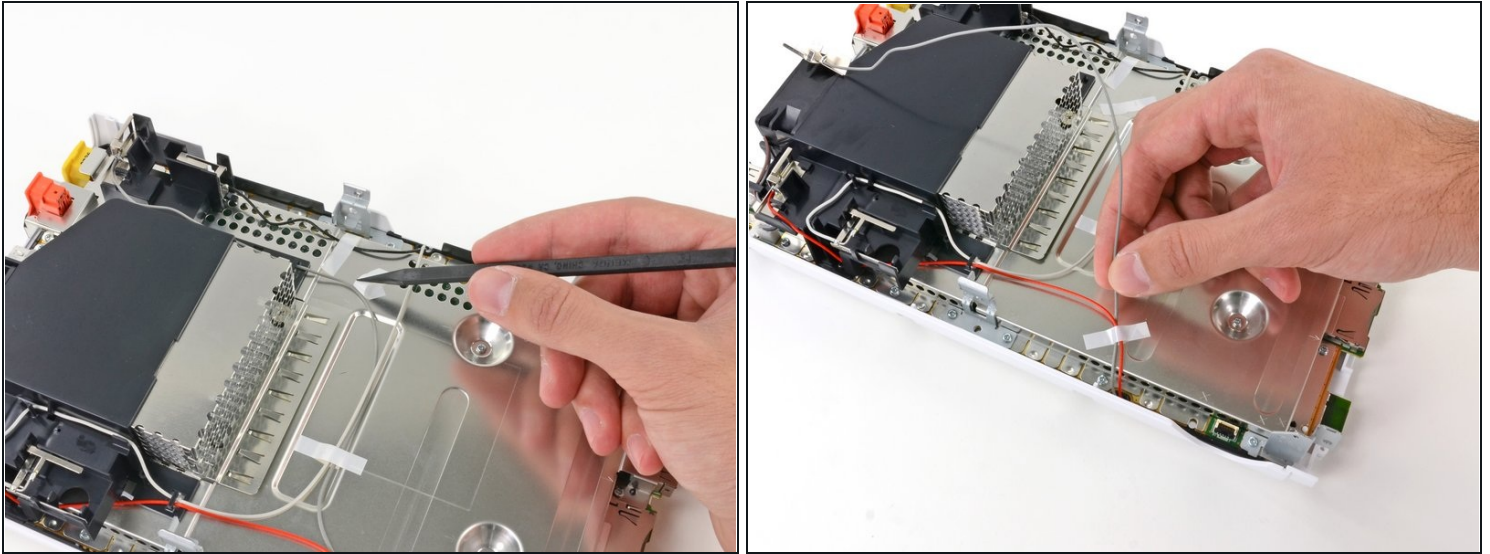
- The device is pretty simple so far, but has no shortage of screws. There's no adhesive holding the U together, but were it not for our [Magnetic Project Mat](#), all of these screws could get out of hand. So far we have encountered both Phillips and Tri-point screws, nothing our [64 Bit Driver Kit](#) can't handle.
- After some unscrewing, the front panel pops right off.

Step 6



- Hmm... This optical drive feels really heavy. It appears much larger than [most optical drives](#), so we take it to the scales!
- *424.2 grams!* That means that the optical drive accounts for nearly a third of the 1.5-kg device.
- We suspect that the large optical drive may be a by-product of the larger motherboard underneath. A case expansive enough to accommodate the motherboard leaves some extra room for a bigger optical drive.
- ① Possible benefits to using a clunkier disc-reader could be reduced cost, quieter operation, or improved longevity over a slimmer drive.

Step 7



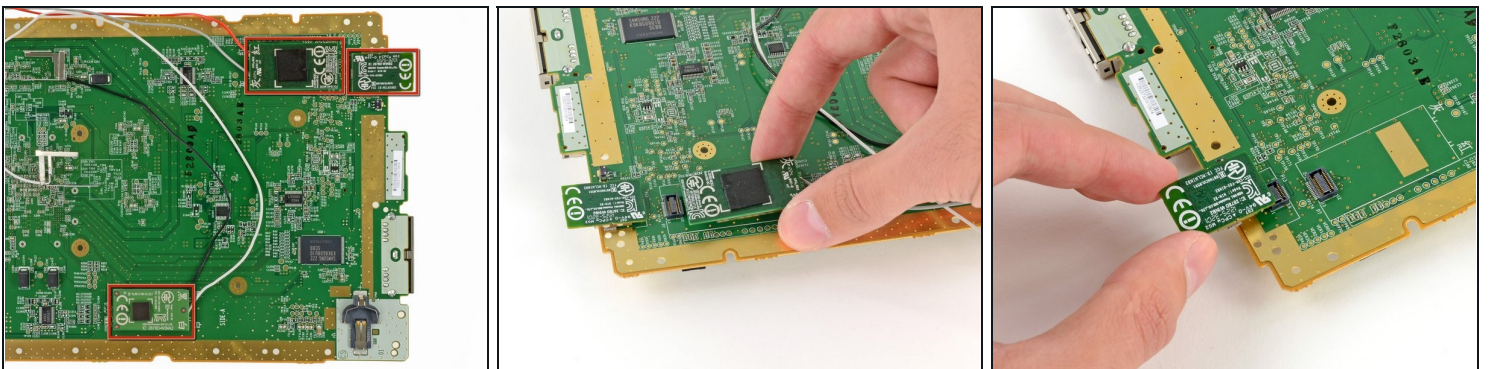
- Unlike [other game consoles](#) with strict space requirements, the antennas in the Wii U have a much more relaxed layout and are held in place with tape.
- Nintendo obviously wasn't concerned with making the smallest box possible, so they didn't worry about rigidly packing relatively small antenna cables in designated slots as we've seen in handheld consoles such as the [3DS](#) and the PS Vita.

Step 8



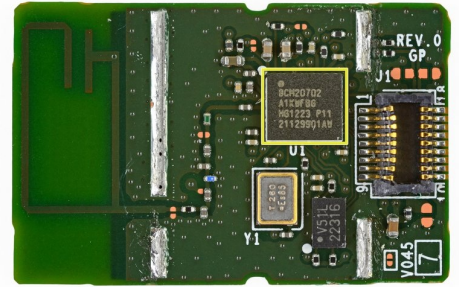
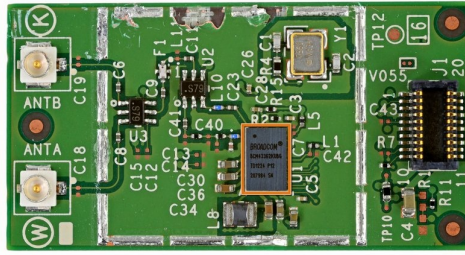
- Next to come out are the fan and heat sink.
- Nintendo designers [explained](#) that the larger fan and heat sink were necessary to handle the nearly tripled heat output from the new ICs.
- With the heat sink off, we get closer to the CPU and GPU, called the Wii U's [multi chip module](#) (MCM), still hidden beneath a thermal pad.
- Thanks to the upgraded AMD GPU, the Wii U boasts HD graphics up to 1080p.
 - Nintendo has [come a long way](#) over the years, considering that we remember when Mario had fewer bits than our old 26-bit driver kit.

Step 9



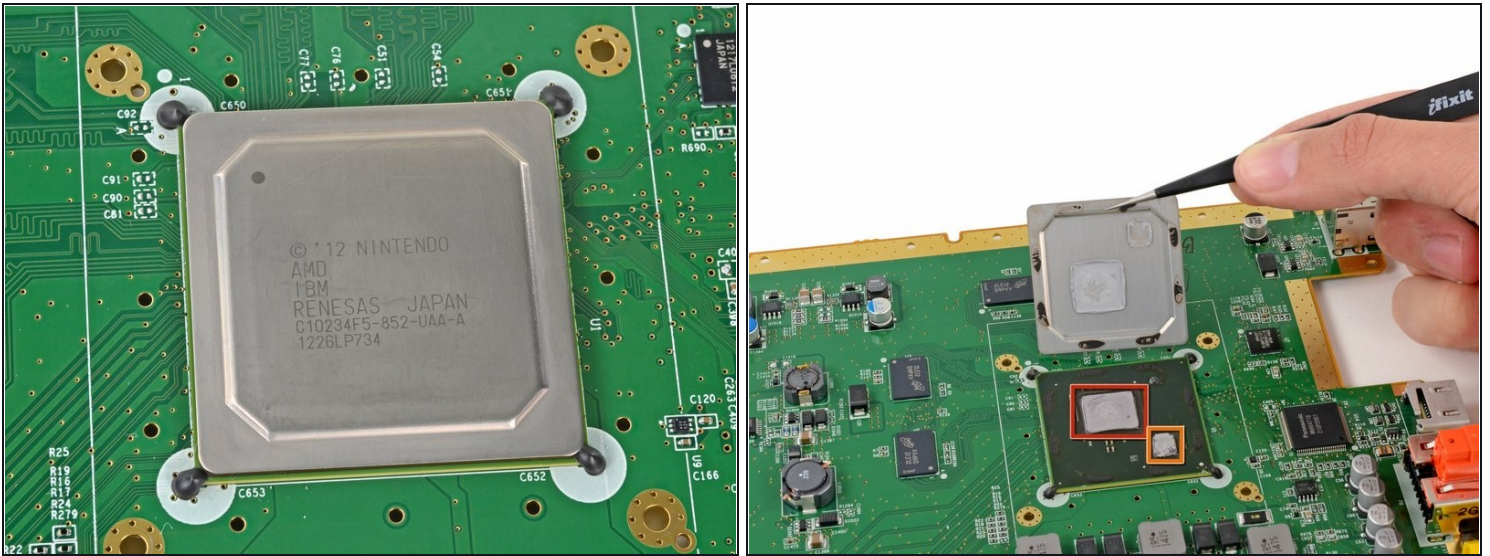
- We finally get to the motherboard. Taking up the entire base of the console, the overall size of the device was likely designed around the motherboard.
- Examining the underside of the motherboard, we find three separate wireless modules. We quickly get to removing them.

Step 10



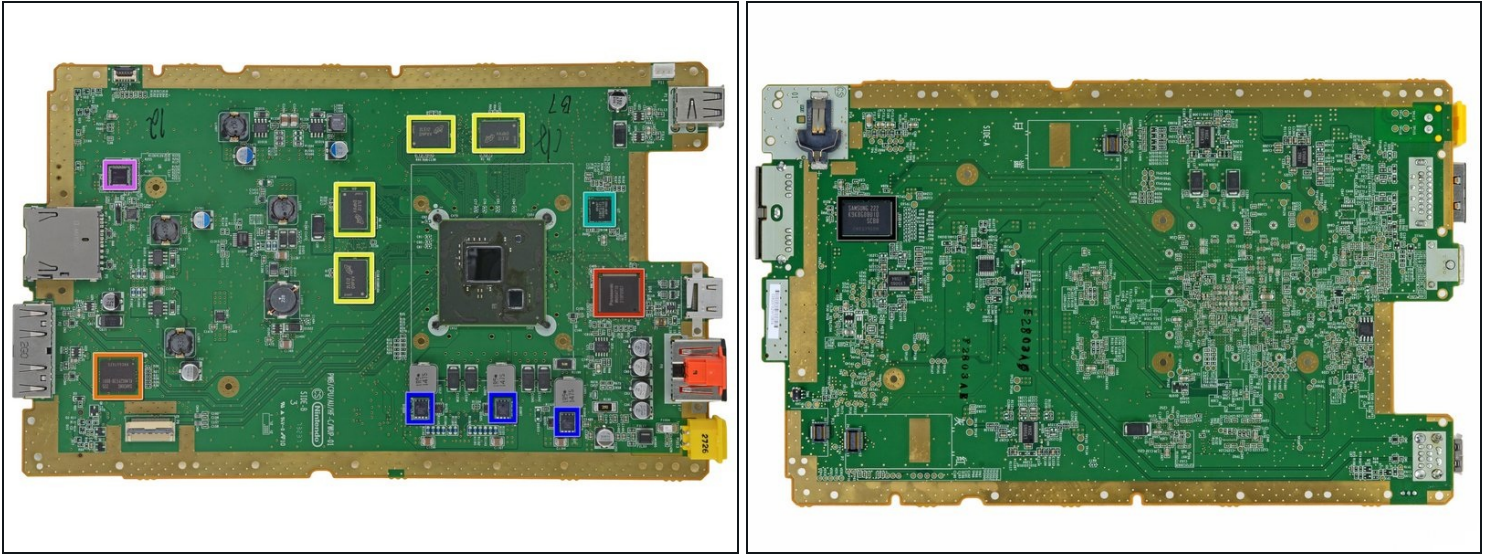
- With the wireless modules out, we get right to examining them.
 - Broadcom [BCM43237KMLG](#) Wireless LAN module
 - Broadcom BCM43362KUB6 802.11n Wireless Module—the same one used in the [Roku 2 XS](#)
 - Broadcom [BCM20702](#) Bluetooth 4.0 module

Step 11



- The shields are down! A quick pass with a heat gun and we get our first look at the CPU and GPU, both covered in ample thermal compound.
- GPU: AMD Radeon™-based High Definition GPU.
- CPU: IBM Power®-based multi-core processor.
- We believe Nintendo placed these ICs close to one another to reduce latency and power consumption.

Step 12



- IC U! The notable players on the motherboard:
 - Panasonic MN864718 HDMI Controller
 - Samsung [KLM8G2FE3B](#) eMMC 8 GB NAND Flash/Memory Controller
 - Micron [D9PXY](#) (MT41K256M16HA-125) 4 Gb DDR3L SDRAM (4 x 4 Gb for a total of 16 Gb or 2 GB RAM)
 - DRH-WUP 811309G31
 - Fairchild DC4AY
 - SMC 1224EE402
 - Samsung [K9K8G08U1D](#) 4 Gb (512 MB) NAND Flash

Step 13



- ① *Bonus Teardown Time!* Break out the champagne and fireworks, it's party time. Why stop the teardown when we have another new piece of hardware at our disposal? Wasting no time, we crack into the Wii U GamePad controller, meant to supplement or replace the original [TV slayers](#).
- A readily available Phillips #00 screwdriver grants us access to the Wii-chargeable battery.
 - The 3.7 V, 1500 mAh rechargeable battery is only good for about 3-5 hours of gameplay, but is easily charged using the included external wall charger.
 - Good news for those looking to extend their playtime—there's plenty of room in the battery compartment for an upgraded pack.

Step 14



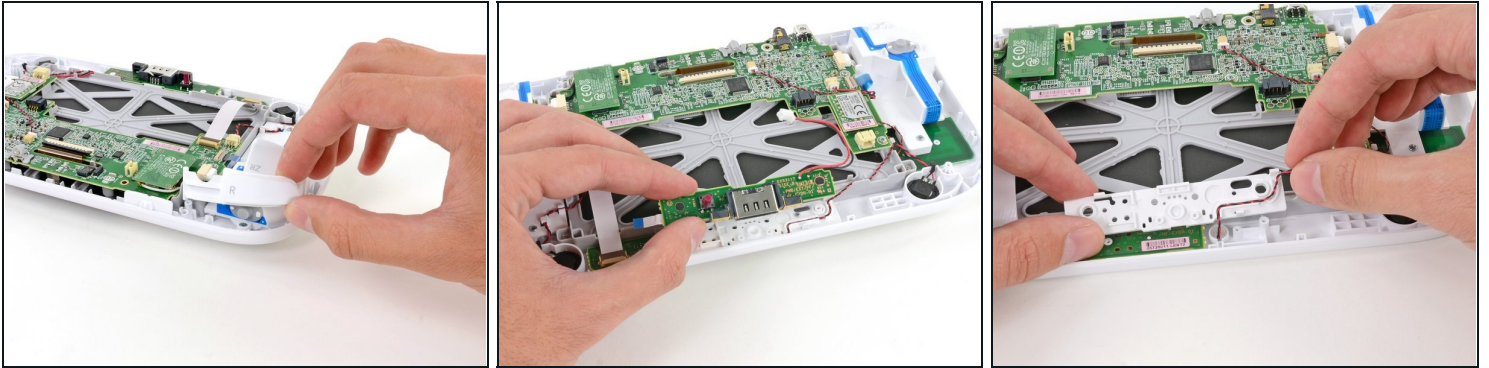
- Nintendo. You're silly. Trying to hide your screws from us? Though clever, the screws are still [hiding in plain sight](#).
- A deca-plethora of hidden and recessed Tri-point screws are inevitably no match for our trusty tools. Some of the screws are very recessed, forcing us to use the included 4 mm nut driver attachment to extend the length of our 54 Bit Driver. It works perfectly, and we are in!

Step 15



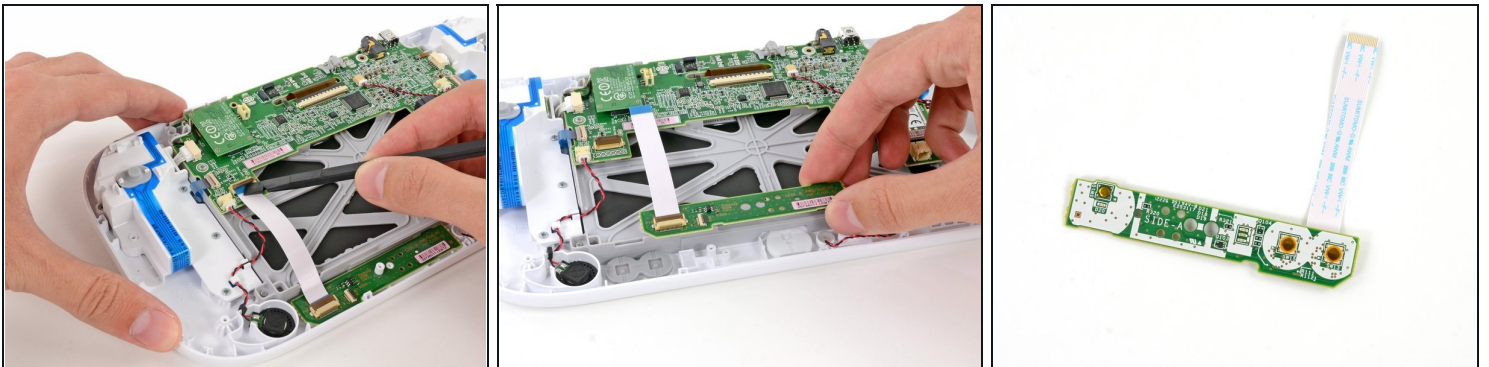
- We make the Wii U GamePad controller spill its guts.
- The larger **gasp!** controller on the U is a design choice, comfortably accommodating the screen, buttons, and circuitry with room to spare.
- Surprisingly, Nintendo fills the controller with—earmuffs, Cupertino—empty space; apparently size does matter.

Step 16



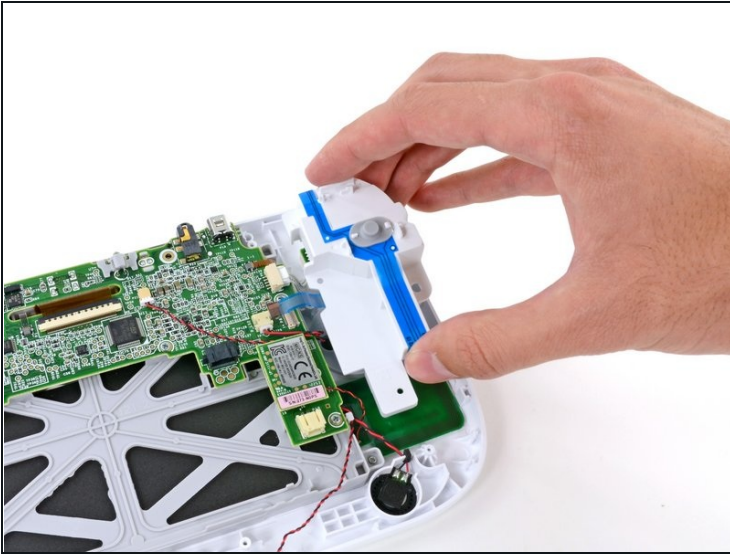
- Shoulder button!
- Ruby red slippers may get Dorothy home, but we prefer the iconic red button.
- From the buttons to the frame, plastic pieces abound in the Wii U's GamePad controller, making the Wii U light and *mostly* kid-proof.

Step 17



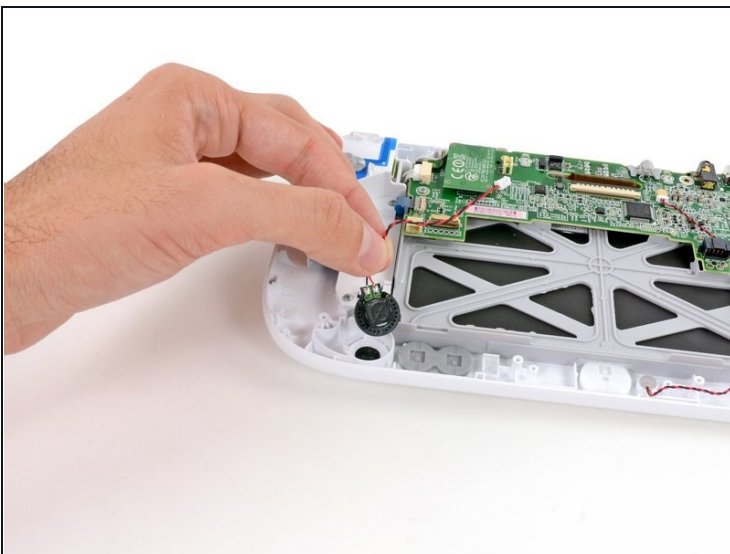
- A simple ZIF connector stands between us and the bottom button board.
- The bottom button board is home to the TV control and power buttons.
- Despite the board housing two of the most important buttons, there are no conspicuous ICs on the bottom button board.

Step 18



- This button casing is wrapped in blue ribbon cables and switches for the ABXY button pad.
- With the button casing out of the way, we get to the first of the dual analog [joysticks](#).

Step 19



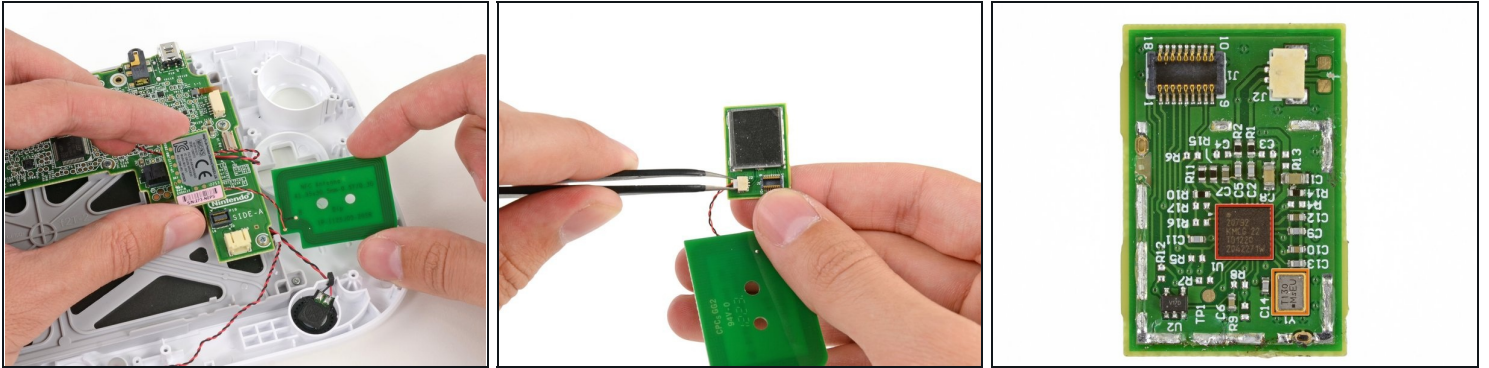
- One part, two part, red part, blue part...big part, small part, let's tear this thing apart.
- We are a bit disappointed that Nintendo didn't use the extra real estate in the Wii U for some crazy speakers.

Step 20



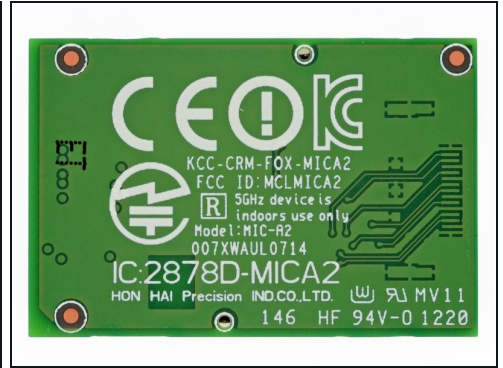
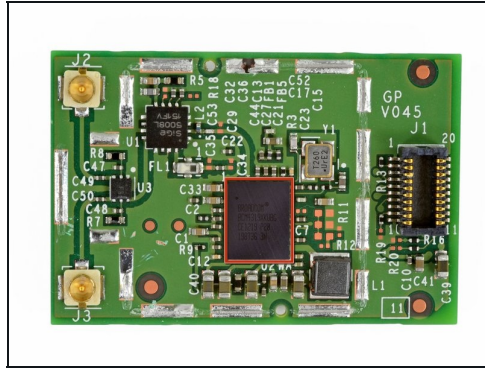
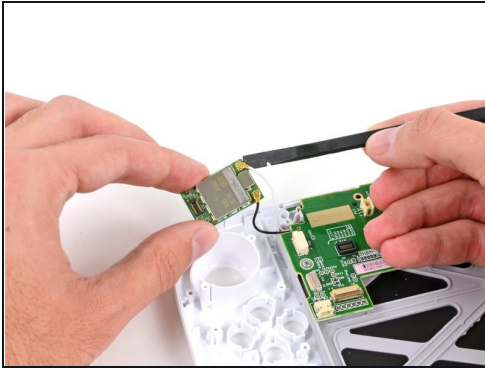
- Button, button, who's got the button? The U doesn't...well, not anymore.
- The rubber backed [ABXY, D-pad](#), start/select, Power, TV, and Home buttons coming flying out of the Wii U.
- Separate button groups are good news for the button mashers among us, as each unit will be relatively quick and inexpensive to replace.

Step 21



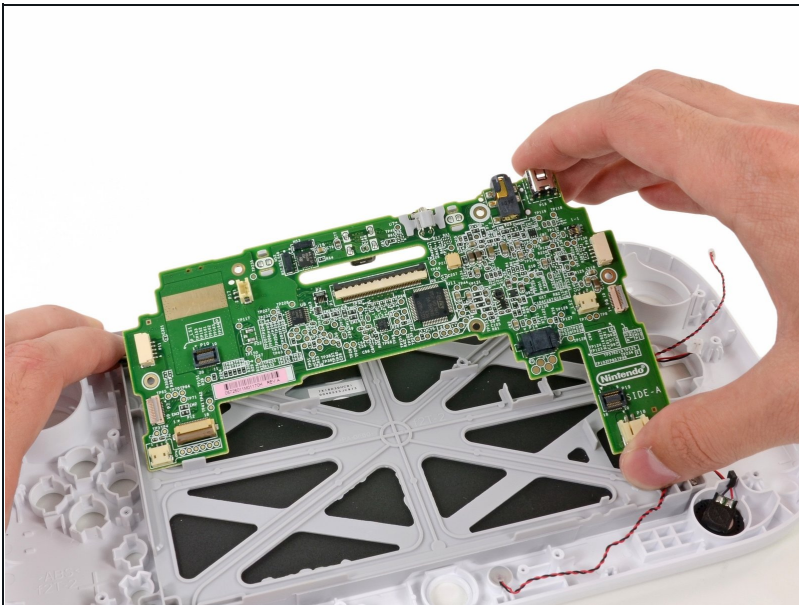
- The Wii U loses its ability to communicate with near fields as we remove the NFC module and antenna.
- What awesome functionality did this bring to the console?
 - Well, as of launch day...none.
 - In the future, we might see loading saved games or importing characters from cards or action figures, like in [this demo](#).
- There are two prominent ICs on the NFC communications board:
 - Broadcom BCM20792 KMLG NFC controller
 - T130 MsEU crystal oscillator

Step 22



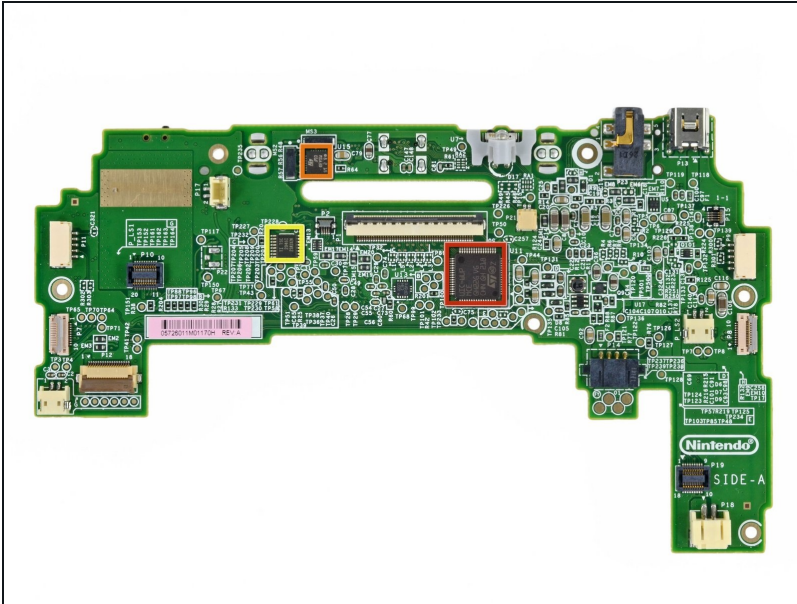
- Pulling out this (third) dual-antenna wireless module is starting to feel pretty routine.
- The board is powered by a Broadcom BCM4319XKUBG.
- This module is likely part of a [new system](#) Nintendo and Broadcom co-designed to wirelessly stream video and data between the Wii U console and GamePad controller.

Step 23



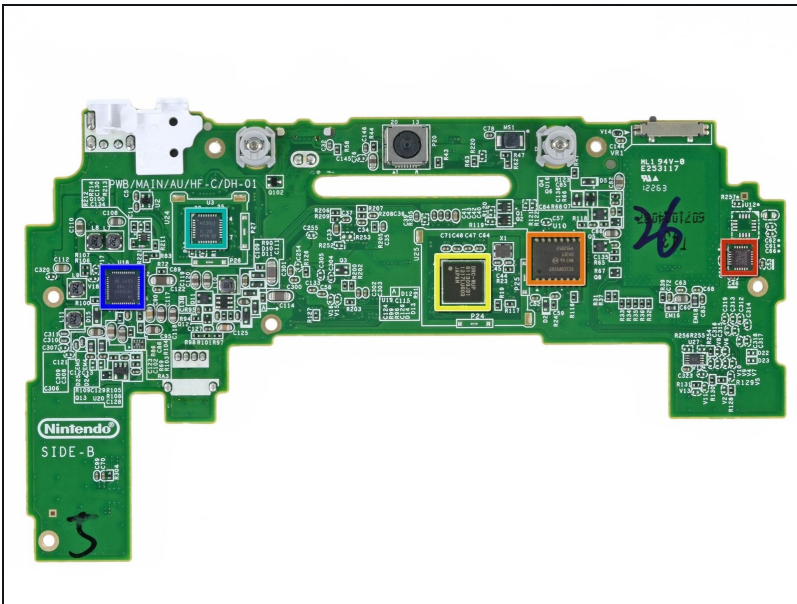
- The GamePad's motherboard is easily displaced from the front panel case.

Step 24



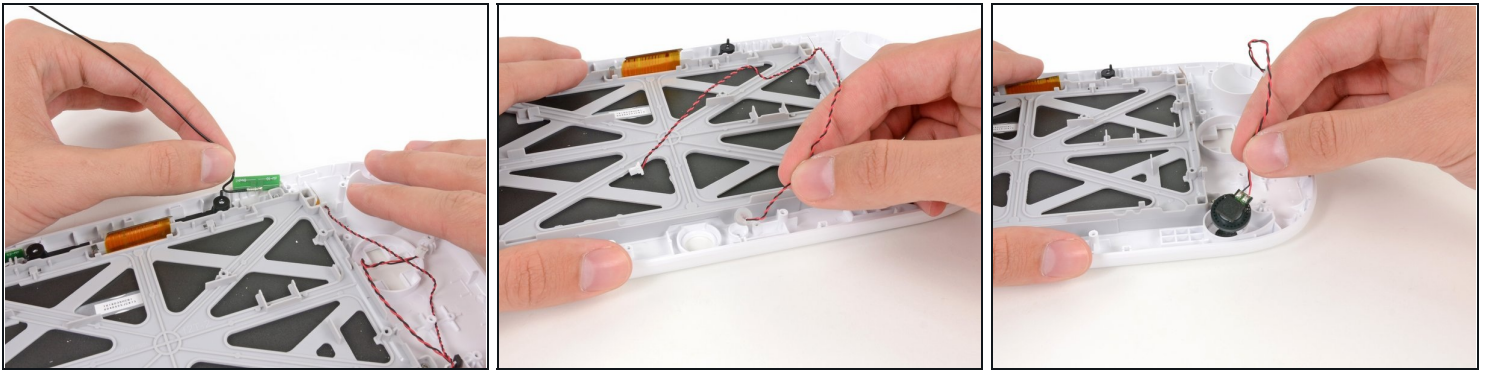
- Front side of the GamePad's motherboard:
- STMicroelectronics UIC-WUP MCE GH226
- STMicroelectronics MSA3D 01F
- Texas Instruments [TSC2046I](#) Low Voltage I/O Touch Screen Controller

Step 25



- The backside of the GamePad's motherboard:
- InvenSense ITG-3280 Gyroscope
- Micron [MT25Q256A](#) 256 Mb Serial Flash
- DRC-WUP 811309J31 1217LU603
- Texas Instruments AIC3012 Audio Converter
- Texas Instruments 1010007

Step 26



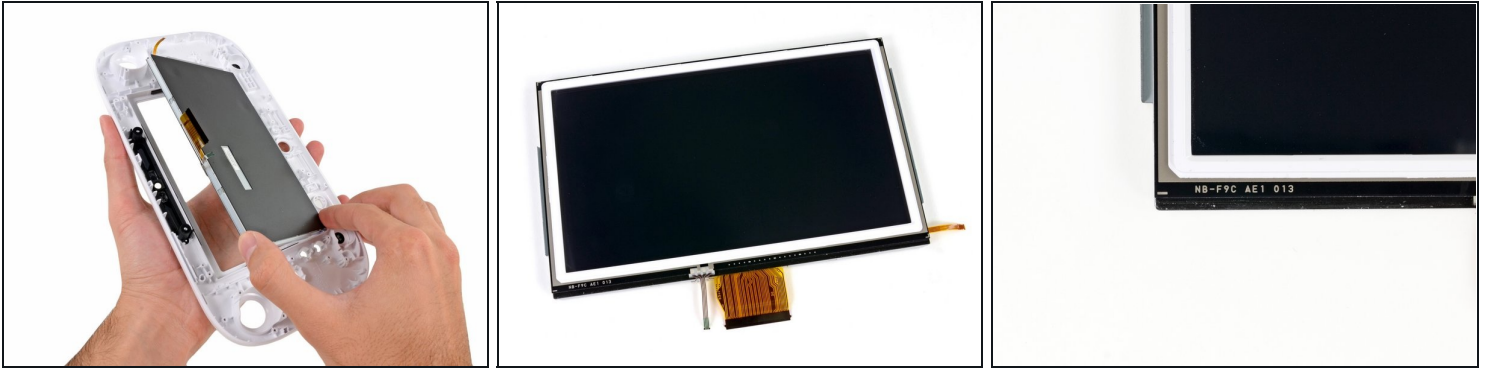
- Just a few more components block our path to the 6.2-inch touch screen display.
- First out are the dual antennas that transfer the GamePad controller's wireless signal back to the Wii U console.
- The microphone and remaining speaker were previously blocked in place underneath the motherboard, but are now easily removed.

Step 27



- The big plastic pieces are getting a bit cliché as we remove yet another.
- The bracket between the screen and the rest of the internals is held in place by standard Phillips #00 screws. Wii cheer for repairability!

Step 28



- In what can only be hailed as a win for repair enthusiasts, the display assembly lifts off the GamePad's front case without any resistance from adhesive.
- However, it seems the LCD is fused to the digitizer. Oh well, you win some, you lose some.
- The display assembly is labeled as NB-F9C AE1 013.

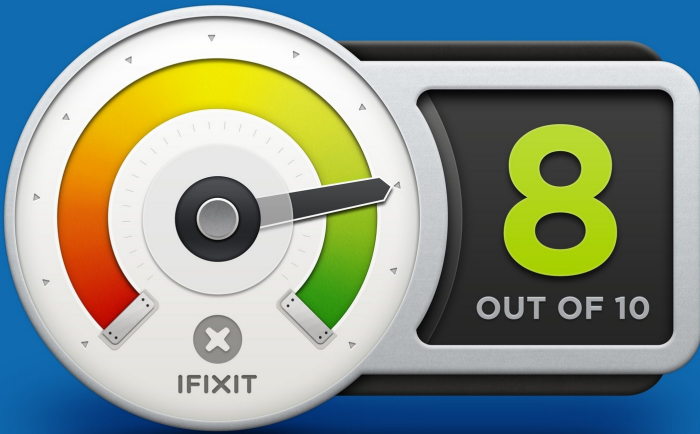
Step 29



- It has been a Wii-ld ride, but this teardown is complete. Time to assign a score!

Step 30 — Final Thoughts

REPAIRABILITY SCORE:



- Nintendo Wii U Repairability Score: **8 out of 10** (10 is easiest to repair):
- No components were held in by adhesive, including the display assembly in the GamePad controller.
- Most components in both the console and GamePad controller can be replaced independently of their respective motherboards.
- The battery in the GamePad is easily accessible and replaceable.
- Once the Tri-point screws have been removed from the top case, minimal prying effort is required to open.
- Some of the screws on the GamePad controller are very recessed, requiring a longer Tri-point bit, or in our case, a 4 mm nut driver attachment.
- The inclusion of Tri-point screws prevents easy access to internal components.
- The GamePad controller's LCD and digitizer are fused together, increasing repair costs.

To reassemble your device, follow these instructions in reverse order.