



Apple Lisa Disassembly

In this guide you will learn how to disassemble the Apple Lisa.

Written By: LisaGuide





TOOLS:

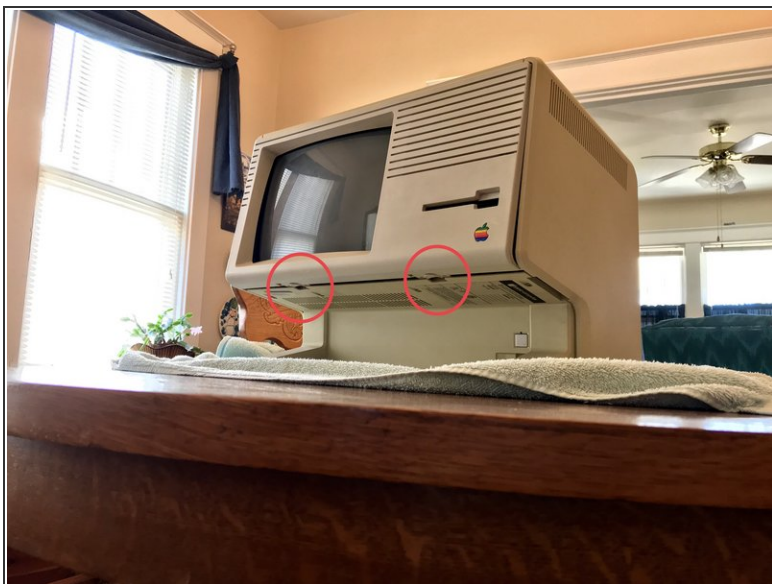
- [Philips head screwdriver](#) (1)
-

Step 1 — Prepare Workspace



- Place the Lisa on a safe/sturdy surface.

Step 2 — Removing Front Panel



- Press the two tabs underneath to release the panel.

Step 3 — Remove Drive Cage



- Release the thumbscrew underneath the drive cage and the cage will pull out. Disconnect drive wires while the cage is being removed.

Step 4 — Remove Back Panel



- Twist thumbscrews on the back to release the panel. Pull panel up to remove.

Step 5 — Remove Power Supply



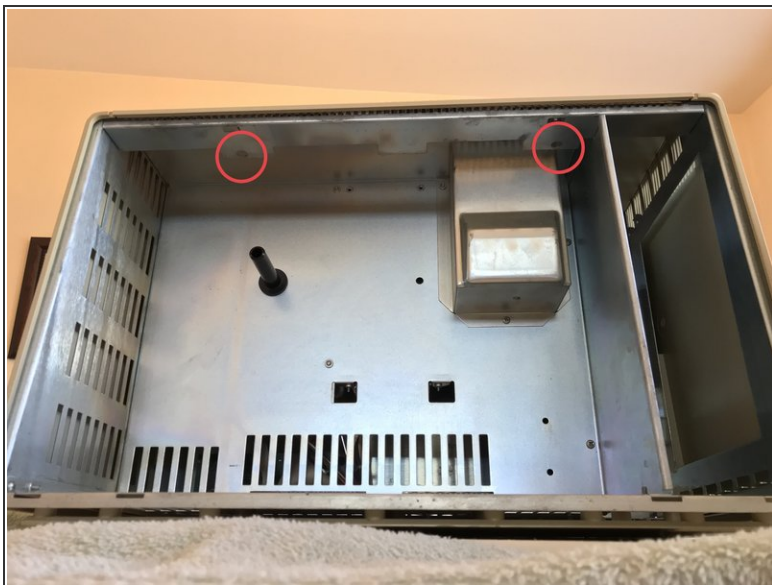
- Release the thumbscrew on the power supply. Pull out the power supply.

Step 6 — Remove Cardcage



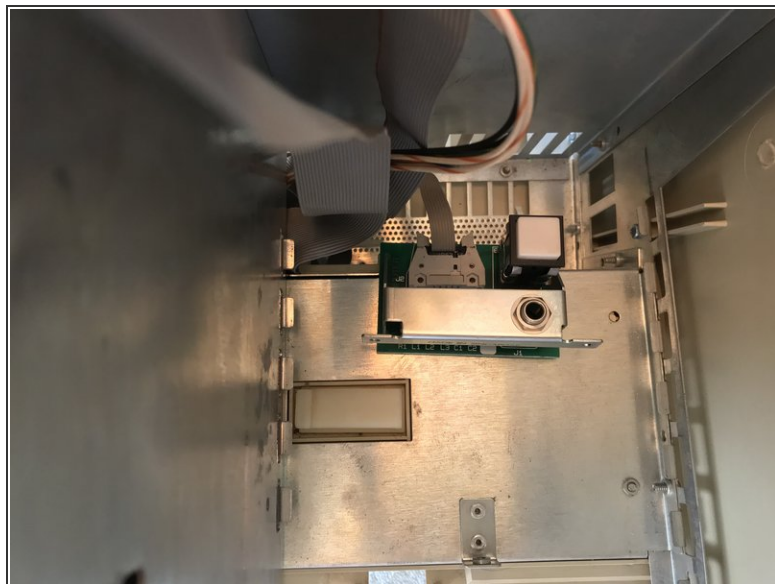
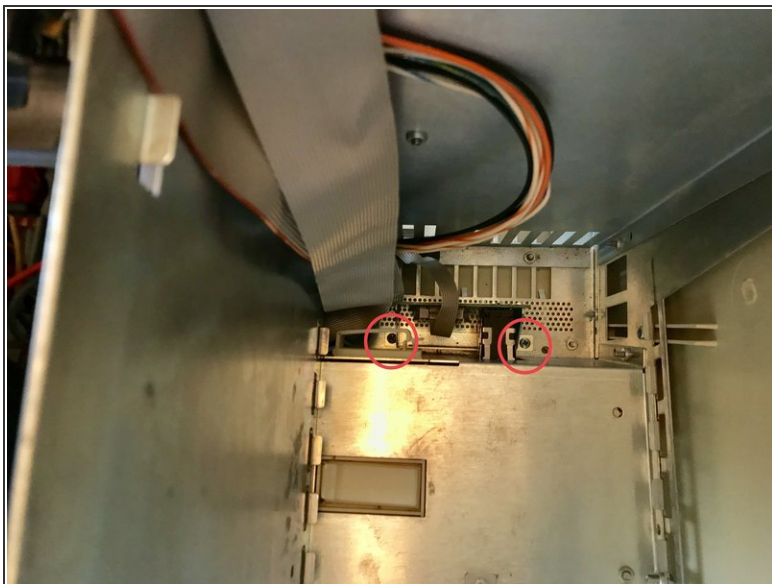
- Grab the card cage at the location shown and pull out.

Step 7 — Remove Top



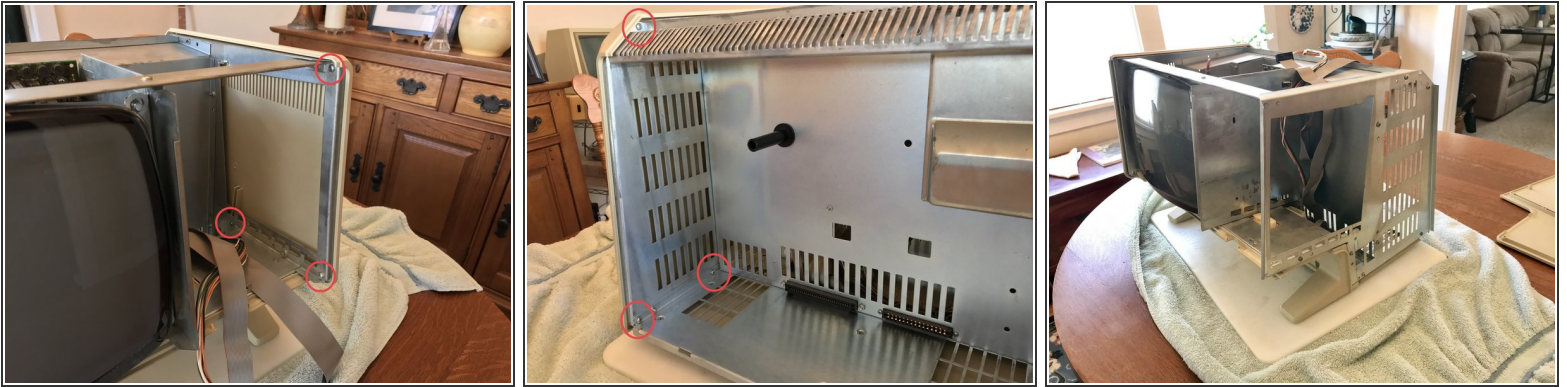
- Unscrew two philips screws on the ceiling of where the card cage was.

Step 8 — Remove Power Switch



- Release two screws and release the ribbon cable.

Step 9 — Remove Right Panel



- Remove all screws shown.

Step 10 — Remove Left Panel



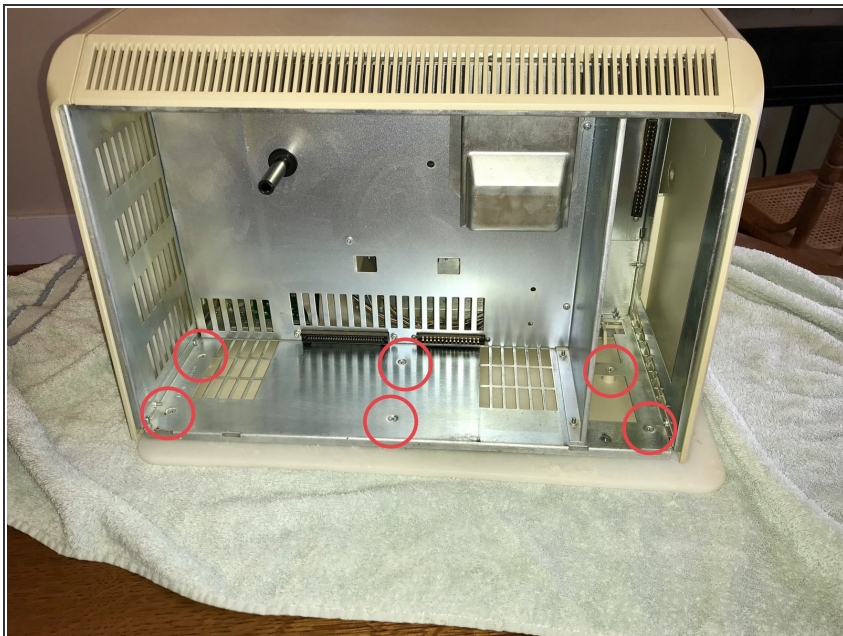
- Remove all screws shown.

Step 11 — Remove Feet Panel



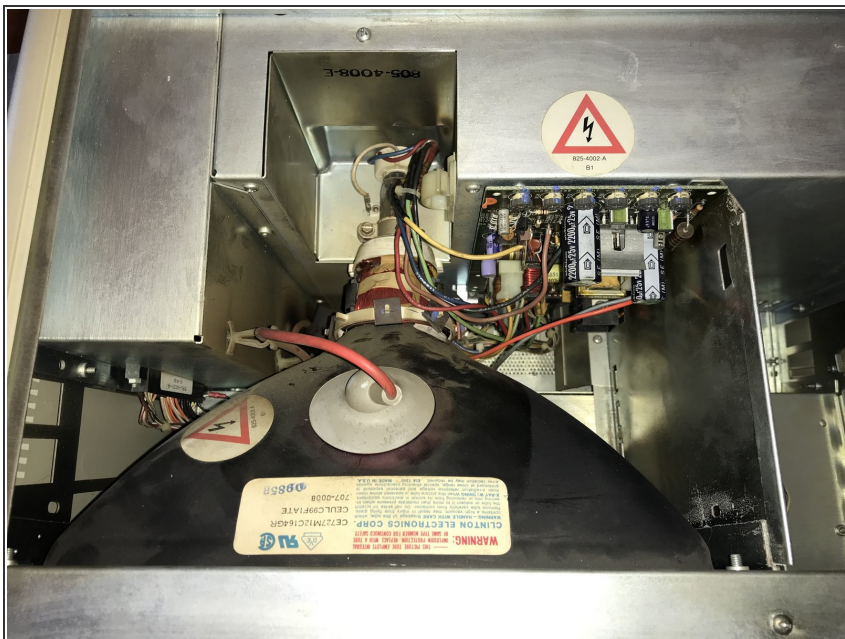
- Remove all screws shown.

Step 12 — Remove Bottom Pannel



- Remove all screws shown.

Step 13 — CRT



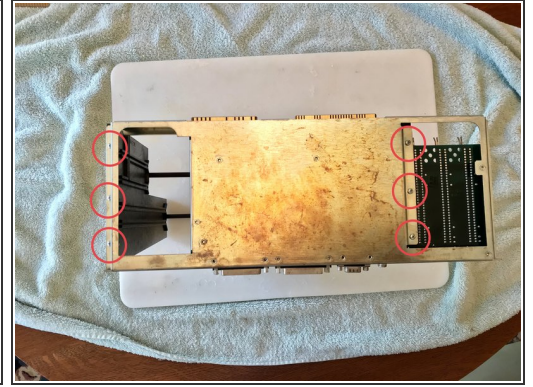
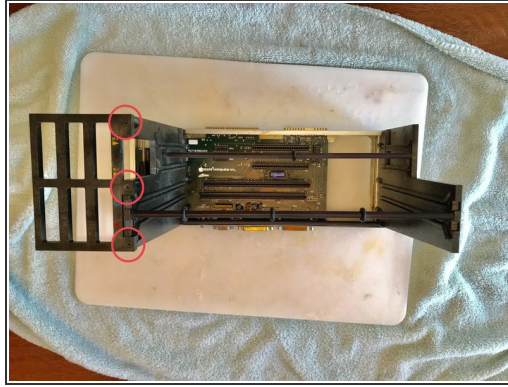
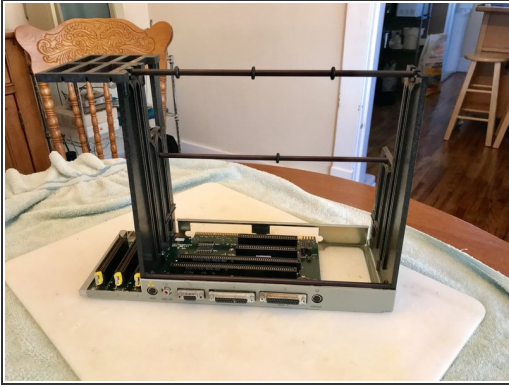
- I am not a certified CRT technician so I am not supplying steps on how to remove it although here is a photo of the innards.

Step 14 — Remove Cards



- Pull up on the tabs to remove cards.

Step 15 — Remove Card Mount



- Remove all screws shown.

To reassemble your device, follow these instructions in reverse order.