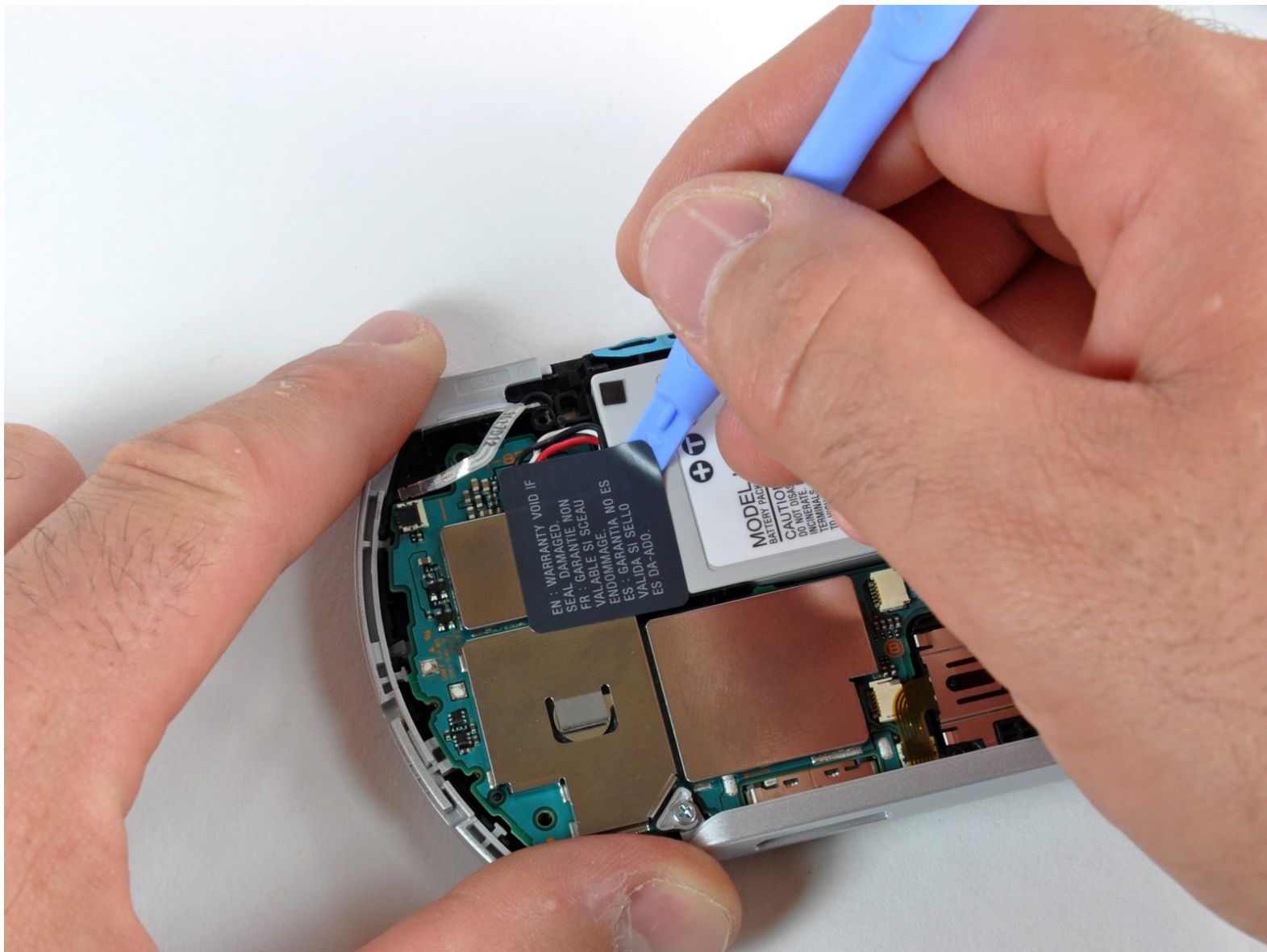




# PSP Go Battery Replacement

Written By: Miroslav Djuric



# INTRODUCTION

This guide shows how to remove the PSP Go's battery.



## TOOLS:

- [Phillips #00 Screwdriver](#) (1)
- [iFixit Opening Tools](#) (1)



## PARTS:

- [Sony PSP Go Battery](#) (1)

## Step 1 — Back Cover



- Unscrew the four Phillips screws on the back of the PSP Go.
- Rotate the PSP so you can see the top of the device.
- Unscrew the two Phillips screws next to the volume buttons.

## Step 2



- Use a plastic opening tool around the perimeter of the back cover to loosen it on all sides.
  - Open the back cover by gently lifting the right side, and rotating it to the left side (as if you were opening a book).
- ⚠ Be careful not to rotate the back cover from the bottom, as you will break the plastic screw holes on top of the device.

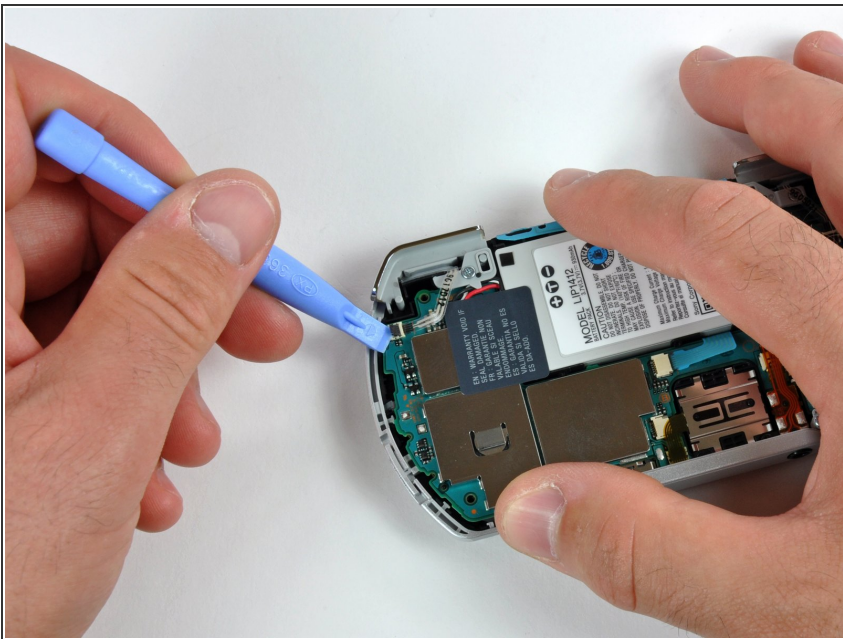


### Step 3 — Top Cover



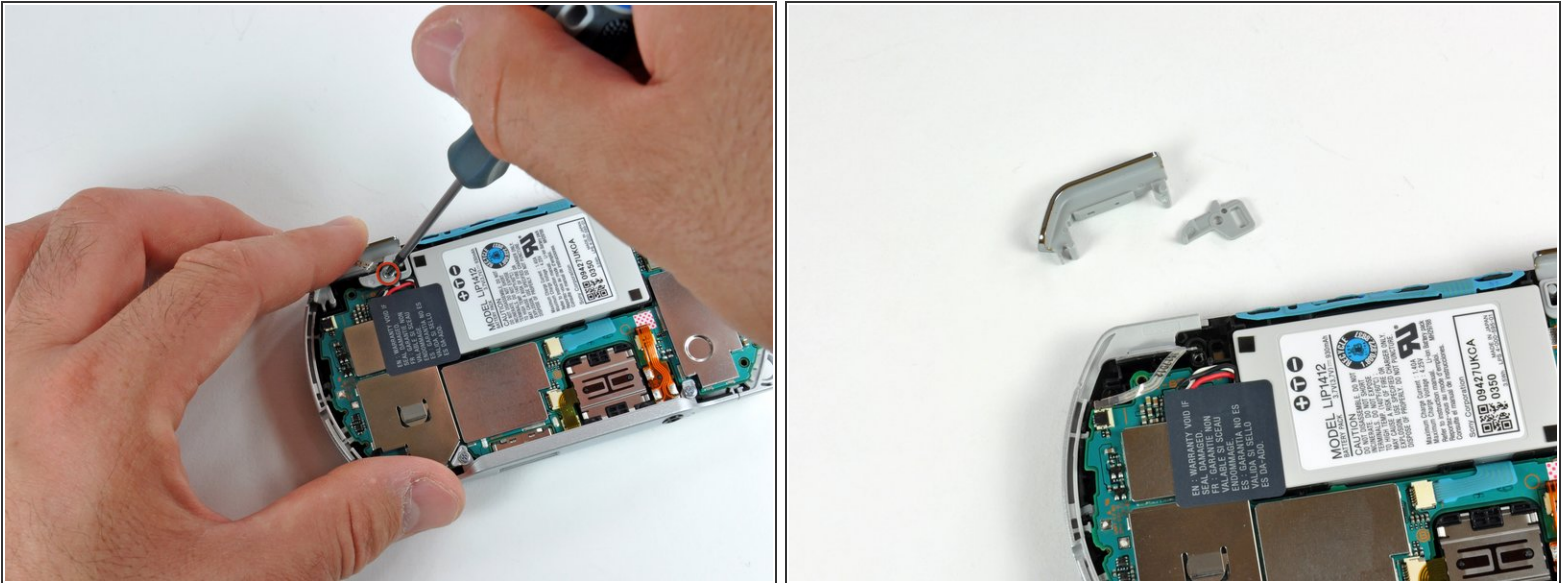
- Pull the top cover upwards gently from its housing.

### Step 4 — Left Trigger



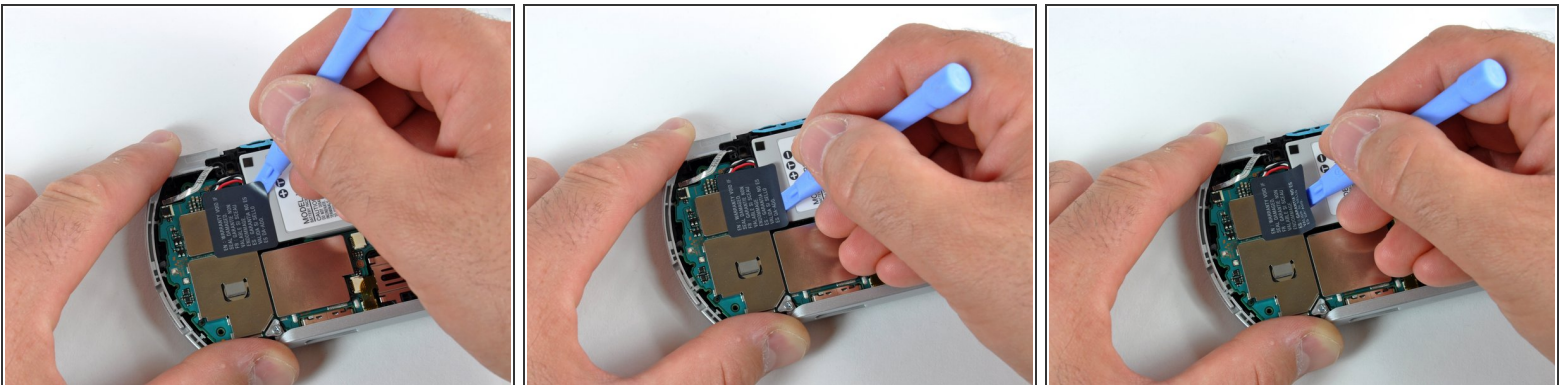
- Use a plastic opening tool to gently flip up the left trigger connector.

## Step 5



- Unscrew the lone Phillips screw holding the trigger in place. Remove both trigger and retaining plate from the PSP Go.
- ⓘ If necessary, repeat steps 2 and 3 to remove the right trigger button.

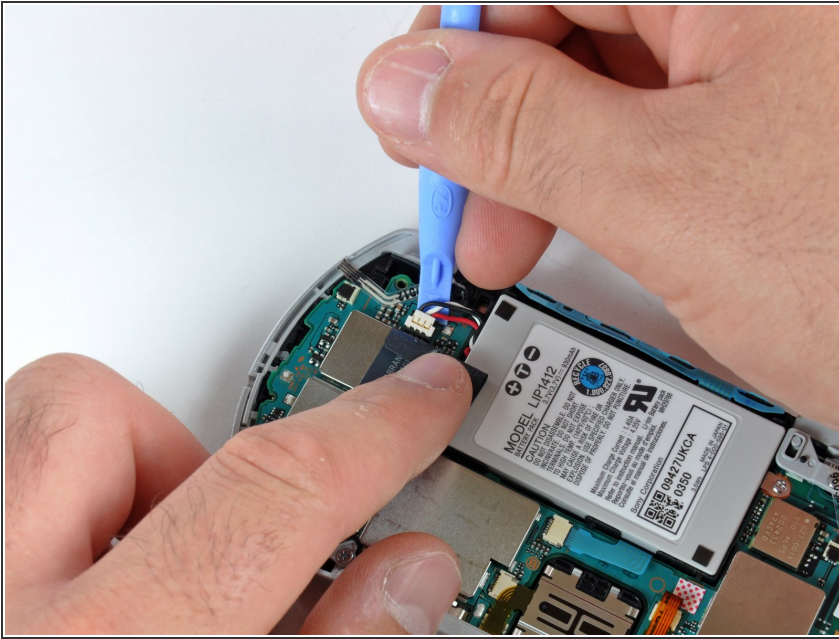
## Step 6 — Battery



- ⚠ Do not peel the sticker away from the left EMI shield. It will expose the "VOID VOID" lettering that will void your warranty!
- Use the plastic opening tool to gently peel away at the "Warranty Void" sticker. Start on one edge, as shown, and slide the tool from side to side until the sticker is removed **from just the battery**.

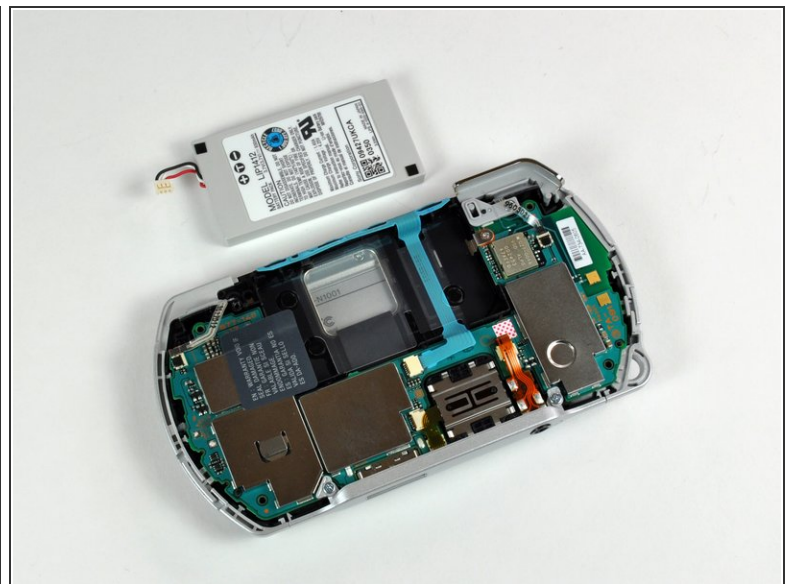


## Step 7



- **Gently** pull the sticker away from the battery connector, just enough so that the connector is visible.
  - Wedge a plastic opening tool in between the connector and logic board, and gently pull the connector upwards.
- ⚠ Make sure not to disconnect the white connector socket on the logic board, and just the connector itself.

## Step 8



- Use a plastic opening tool to pop out the battery, being careful not to snag the "Warranty Void" sticker in the process.
- ☑ When putting a new battery into the PSP Go, make sure you hold the "Warranty Sticker" so you don't put the battery on top of it.

To reassemble your device, follow these instructions in reverse order.