



# Google Pixel 2 XL SIM Card Replacement

Remove or replace the SIM card or SIM card tray in a Google Pixel 2 XL.

Written By: Adam O'Camb



---

## INTRODUCTION

**This repair guide was authored by the iFixit staff and hasn't been endorsed by Google. Learn more about our repair guides [here](#).**

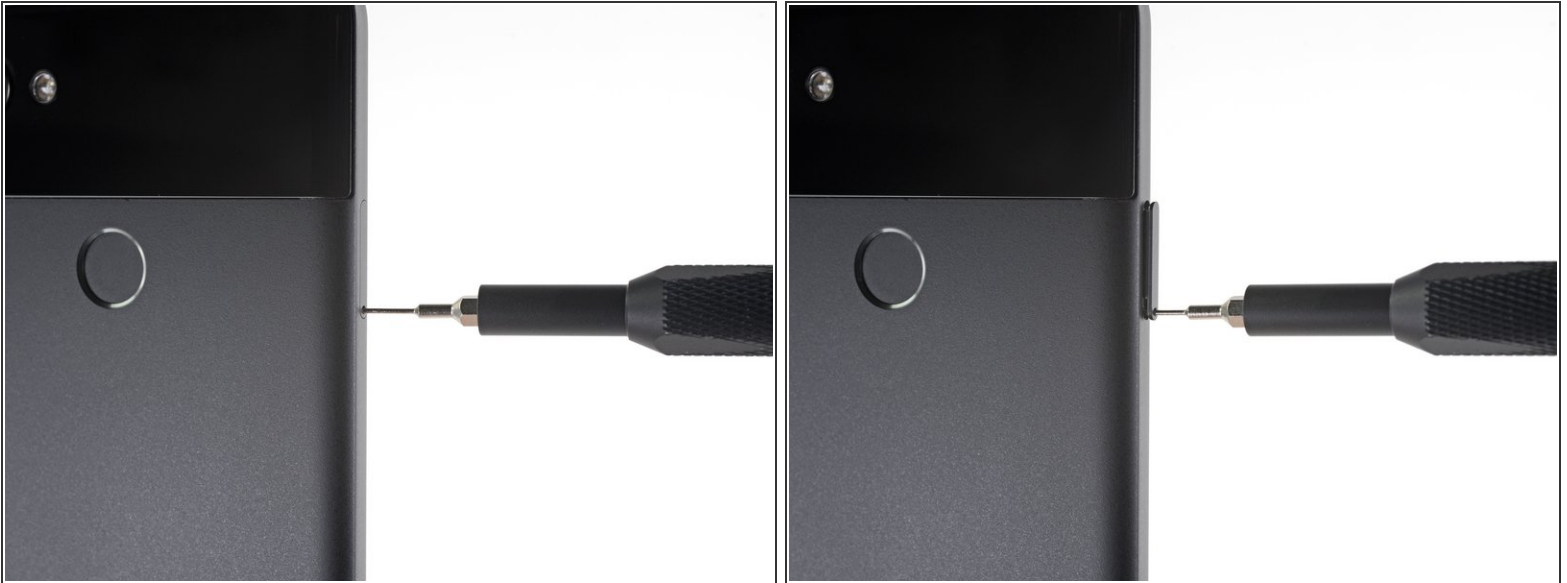
Use this guide to remove the SIM card or SIM card tray in your Google Pixel 2 XL.



### TOOLS:

- [SIM Card Eject Tool](#) (1)

## Step 1 — SIM Card



- Insert a SIM card eject tool or a paperclip into the small hole in the SIM card tray, located on the left edge of the phone, opposite of the power and volume buttons.
- Press firmly to eject the tray.

## Step 2



- Remove the SIM card tray from the phone.
  - ⓘ The SIM card will fall out of the tray easily.
- ★ When reinserting the SIM card, ensure that it is in the proper orientation relative to the tray.

To reassemble your device, follow these instructions in reverse order.

Repair didn't go as planned? Check out our [Answers community](#) for troubleshooting help.