



Nintendo 64 Controller Teardown

Teardown of the standard controller for the Nintendo 64.

Written By: Ian





TOOLS:

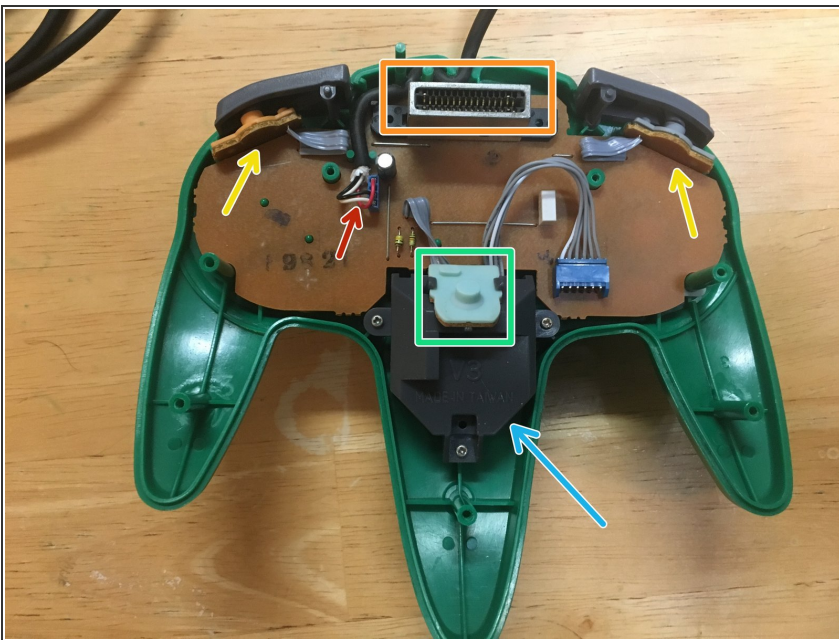
- [Phillips #1 Screwdriver](#) (1)
 - [Phillips #0 Screwdriver](#) (1)
-

Step 1 — Nintendo 64 Controller Teardown



- Behold the glorious retro controller face, then forget about it because you will flip the controller for the rest of the teardown.
- Use the size #1 Philips to remove the 7 screws on the back of the controller.
- Use the size #0 Philips to remove the smaller screws in the controller pak slot.

Step 2



- Remove the back plate. You can now see the:
- Power Input
- Game Pak Slot
- Trigger Button Assemblies
- Z Button Assembly
- Joystick Module

Step 3



- Using a spudger or similar tool, carefully pry the Z button assembly from the joystick module.
- Remove the 3 size #0 screws holding in the joystick module.
- Remove the joystick cable from the main board.

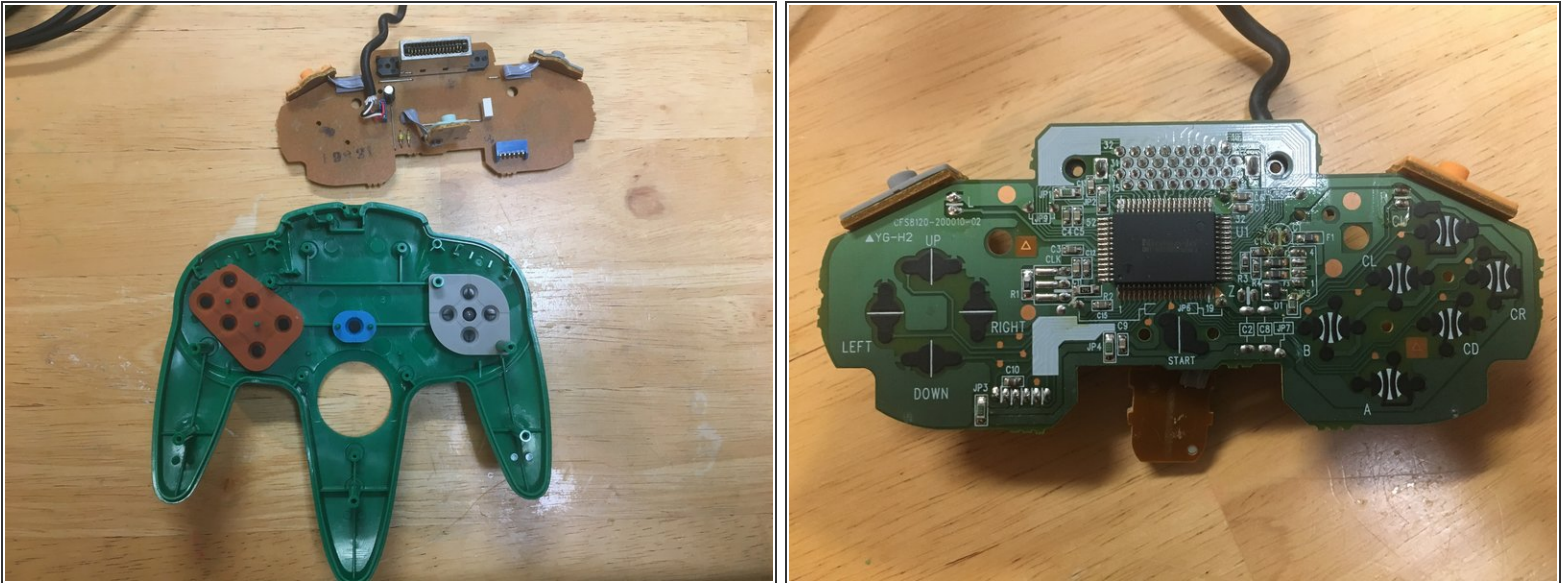
Step 4



- Remove the joystick module.

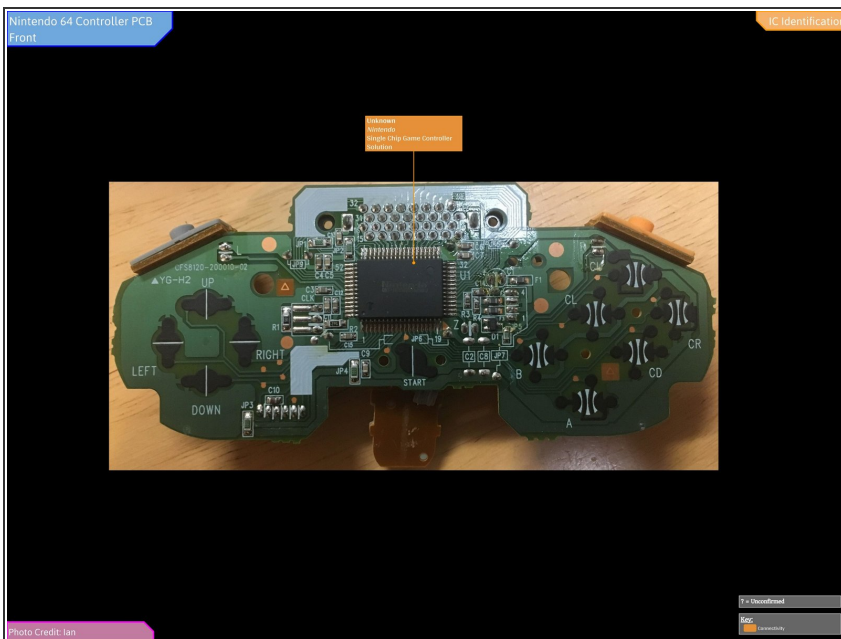
i This particular module is a third party replacement. Yours may look different.

Step 5



- Remove the main board and trigger assemblies.
- Your controller is now fully disassembled!

Step 6



- Full IC Identification:
 - ❗ You may need to enlarge it to view the text.