



PSP Go Analog Joystick Replacement

Use this guide to put a fresh analog joystick...

Written By: Miroslav Djuric



INTRODUCTION

Use this guide to put a fresh analog joystick into the PSP Go!

TOOLS:

[Phillips #00 Screwdriver](#) (1)
[iFixit Opening Tool](#) (1)

PARTS:

[Sony PSP Go Analog Joystick](#) (1)

Step 1 — Back Cover



- Unscrew the four Phillips screws on the back of the PSP Go.
- Rotate the PSP so you can see the top of the device.
- Unscrew the two Phillips screws next to the volume buttons.

Step 2



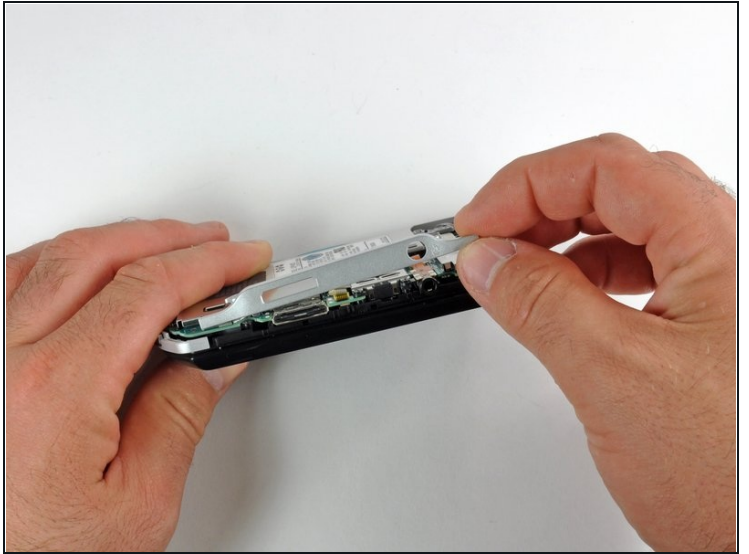
- Use a plastic opening tool around the perimeter of the back cover to loosen it on all sides.
 - Open the back cover by gently lifting the right side, and rotating it to the left side (as if you were opening a book).
- ⚠ Be careful not to rotate the back cover from the bottom, as you will break the plastic screw holes on top of the device.

Step 3 — Top Cover



- Pull the top cover upwards gently from its housing.

Step 4 — Bottom Plate



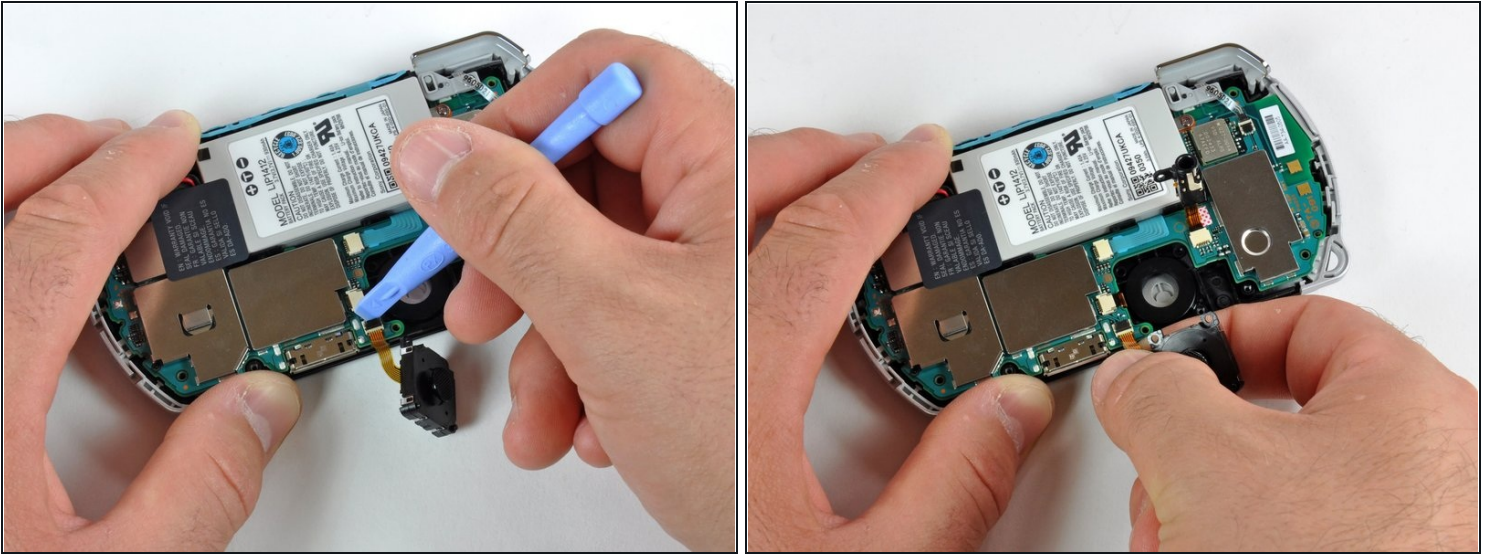
- Remove the two Phillips screws holding the bottom plate.
- Gently lift the bottom plate away from the device.

Step 5 — Analog Joystick



- Use a #00 Phillips screwdriver to remove both screws holding the analog joystick in place.

Step 6



- Use a plastic opening tool to gently flip up the analog joystick's cable connector.
- Use your fingers or [tweezers](#) to gently pull out the analog joystick cable from its connector.

To reassemble your device, follow these instructions in reverse order.