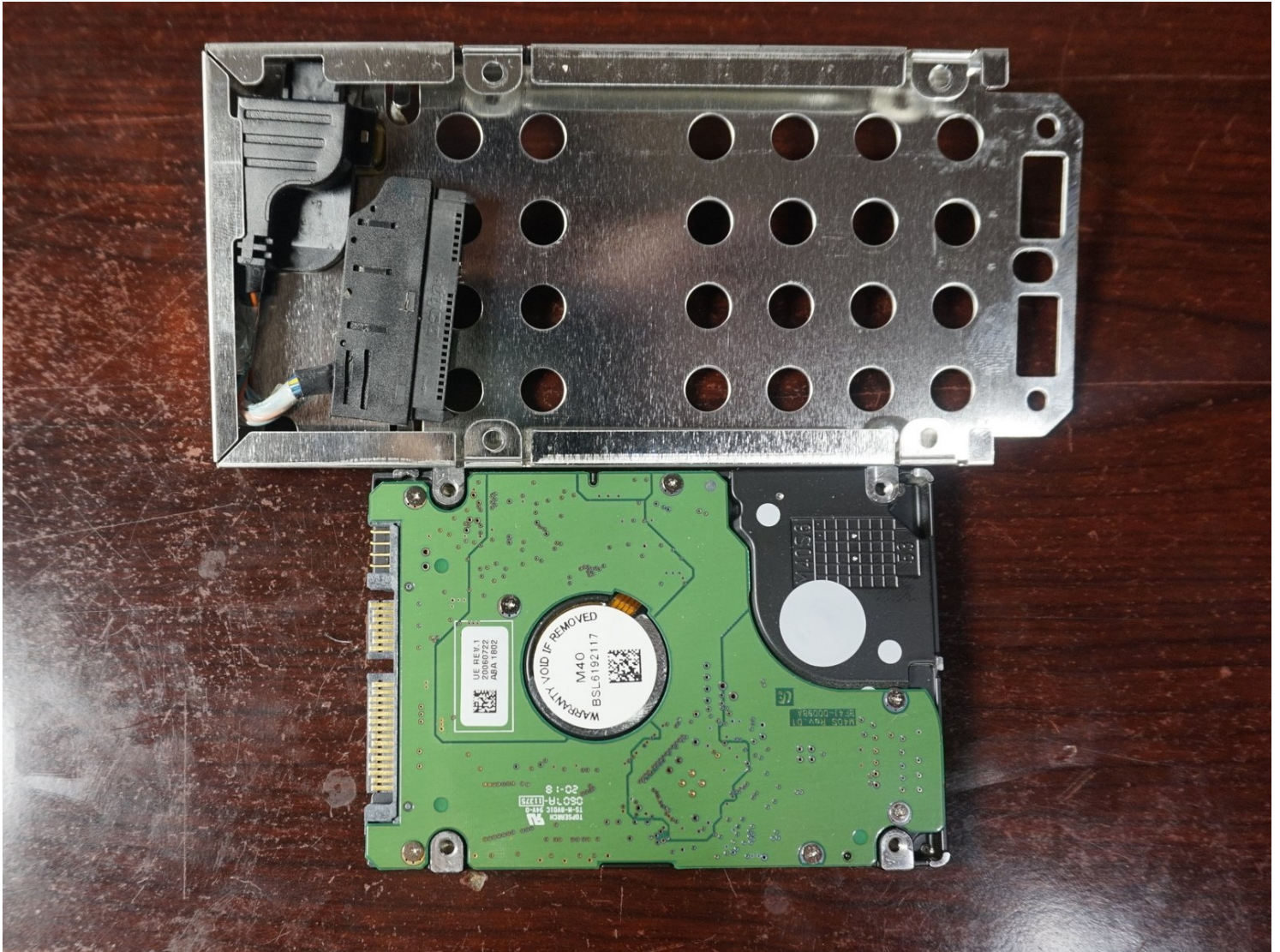




# (Fat) Xbox 360 Hard Drive Replacement

This guide is inspired by the existing guide on...

Written By: Nick



# INTRODUCTION

*This guide is inspired by the [existing guide](#) on iFixit. This is an attempt to improve the procedure.*

***ATTENTION: Technically the Xbox Live ToS prohibit this, but the Xbox Live enforcement team (generally) doesn't care about the hard drive modification, unless you are using mods and cheats. IN THE EVENT OF A BAN, YOU WERE WARNED!!!***

***WARNING: THIS WILL VOID YOUR WARRANTY if you have one on the drive you purchased!***

If you have a low capacity hard drive and want to upgrade it or need the hard drive for a S/E console, this guide will show you how to take the fat 360 hard drive apart for the hard drive. Taking the drive apart isn't difficult, but it requires access to Torx T6 and T10 screwdrivers.

Once the enclosure is open, any compatible drive can be installed. There may be compatibility limitations to deal with, so buy the correct drive or it may not work.

## ***Guide notes***

- Try not to destroy the enclosure if you do not need it. These can be sold to recoup some of your costs.
- Any known compatible drive can be installed. Some drives do not work, so bear this in mind when purchasing a drive.



### **TOOLS:**

[Essential Electronics Toolkit](#) (1)

*Use T6 and T10 bits for screws, picks for difficult adhesive.*



### **PARTS:**

[Xbox 360 HDD Enclosure](#) (1)

---



## Step 1 — Remove the bottom screws



**⚠ Buy the drive at a cost you can afford to eat. This will void any warranties offered.**

- Remove the **3 screws** from the bottom of the drive. Use a **T6 Torx** driver.
- Remove the warranty seal and final screw. Use a **T6 Torx** driver.

## Step 2 — Disassembly tip



- ★ **If the drive is difficult to open and you are opening it to put the drive into a later Xbox 360 with no intention to preserve the enclosure, a screwdriver or pry tool can help.**
- i **If you are opening it to replace the drive inside for an original console, it is best to use a plastic pry tool instead. While a screwdriver "works" it will likely mar the enclosure.**

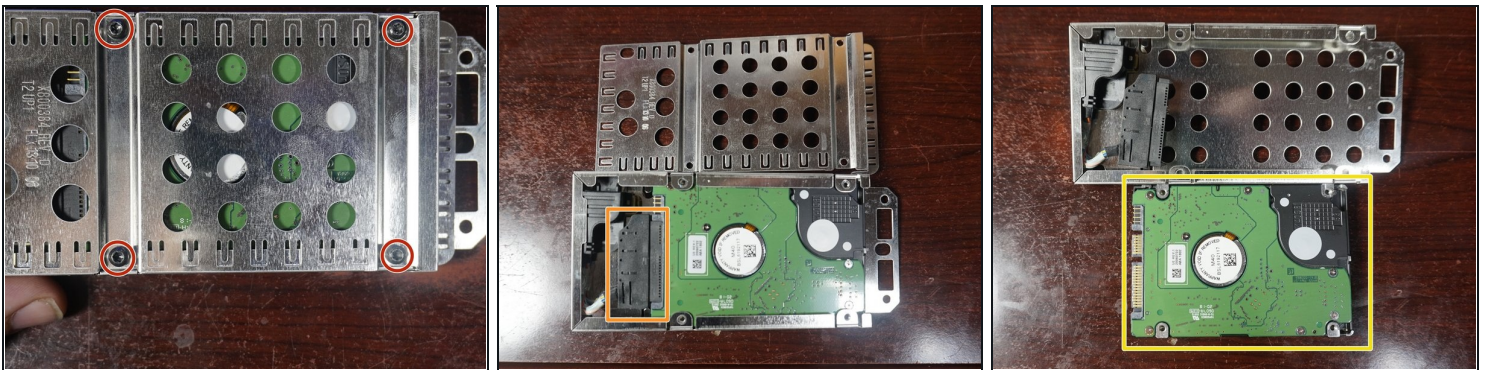
### Step 3 — Open the drive



☐ If you are taking the enclosure apart for the bare drive, less caution is needed.

- **After removing the 4 bottom screws**, remove the top cover. **Remove the spring and locking tab before removing the drive cage.**
- Remove the drive cage from the drive enclosure. **If the drive has never been opened, additional force may be required.**

### Step 4 — Disconnect and remove the hard drive



- Remove the **four T10 Torx screws** securing the hard drive.
  - After removing the screws, **slide the top cover off** and disconnect the drive.
  - **Disconnect the hard drive** and remove it from the enclosure.
-