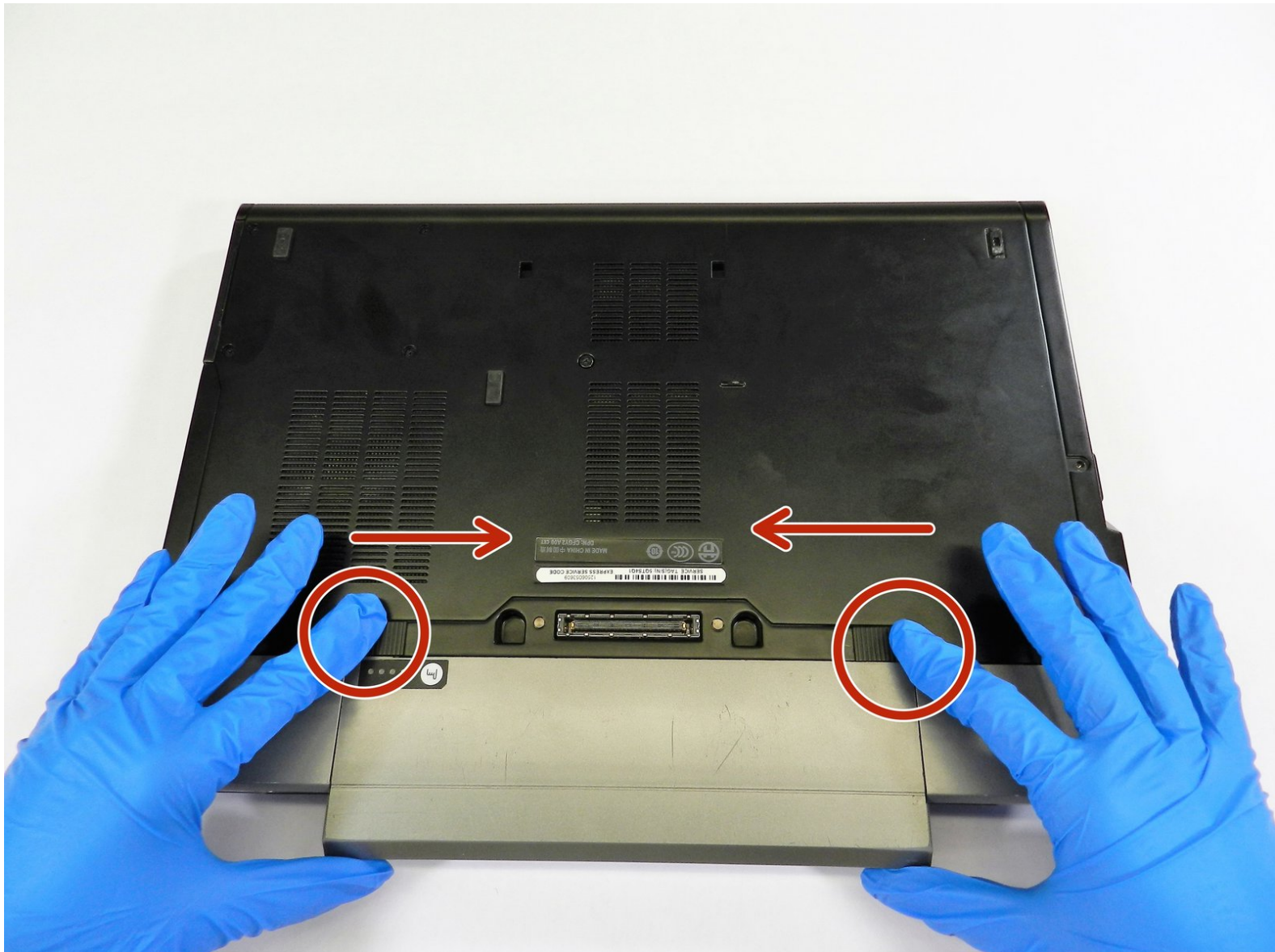




# Dell Latitude E6510 LCD Screen Assembly Replacement

If you need to reinstall a new LCD screen,...

Written By: haileysobota



---

## INTRODUCTION

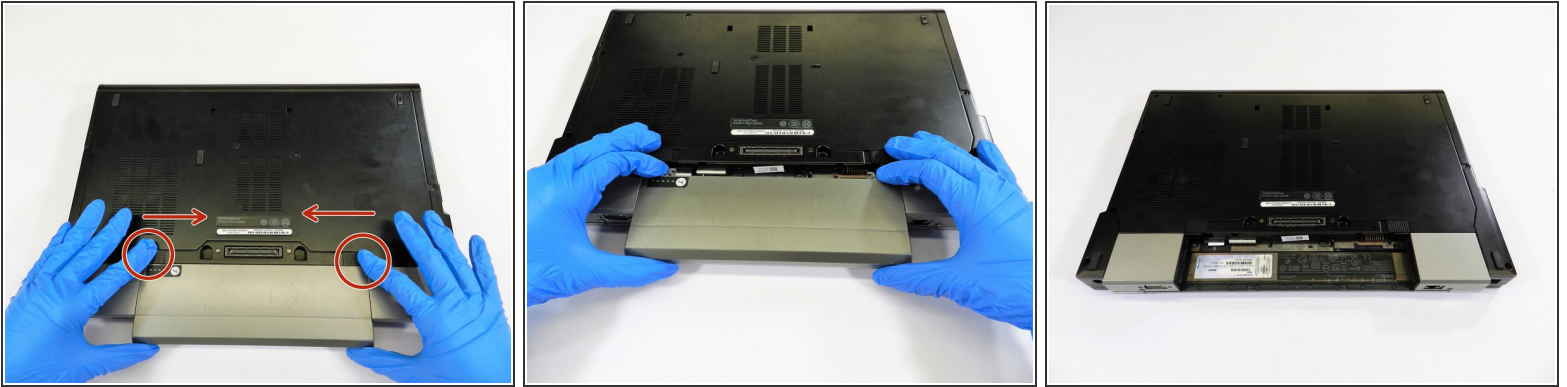
If you need to reinstall a new LCD screen, access the screen with this guide. For this guide, you will need a Phillips #0 screwdriver head. You will not need to do any difficult steps, but unscrew screws, and detach wires.



### TOOLS:

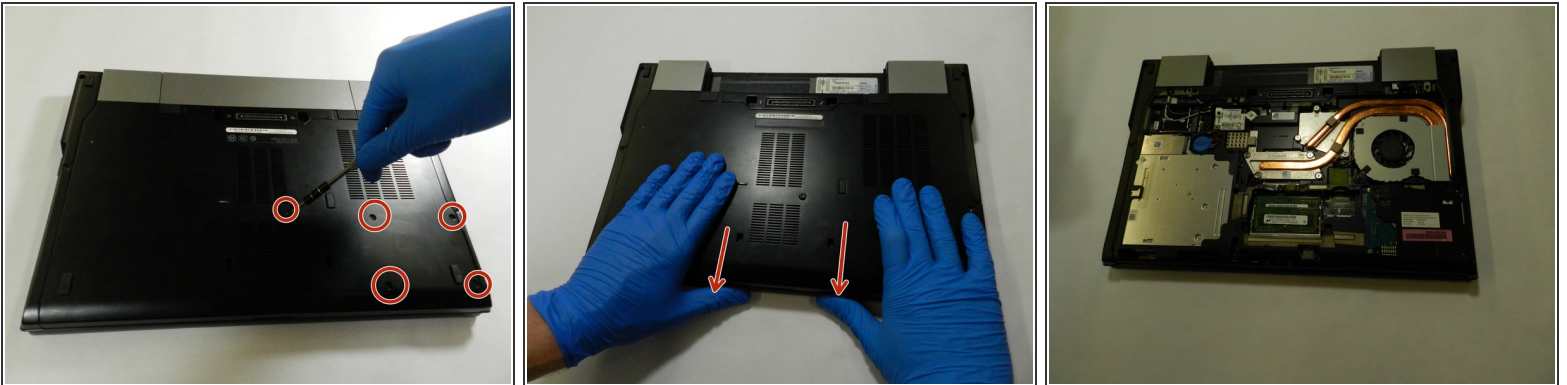
- [Phillips #0 Screwdriver](#) (1)
-

## Step 1 — LCD Screen Assembly



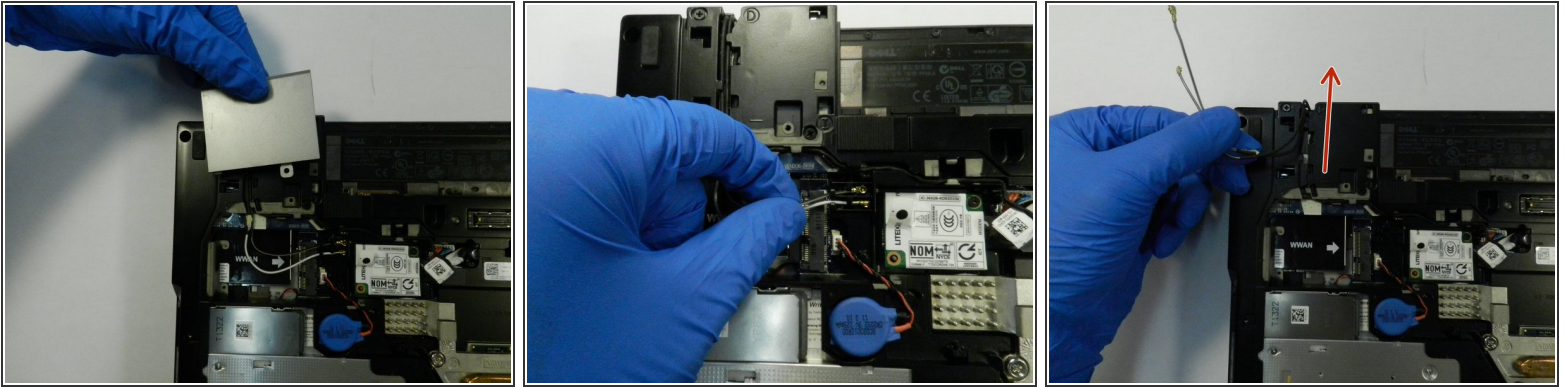
- Orient your laptop so that the bottom is facing up towards you.
- Place your thumbs on the grooved sections above the battery and firmly pull away from each other.
- Slide the battery out and separate it from the laptop.

## Step 2



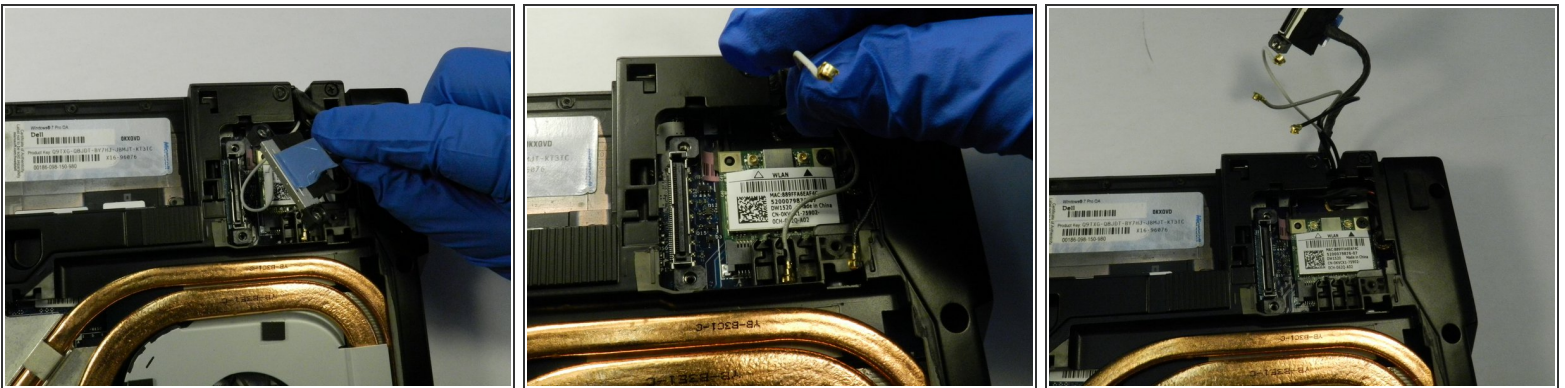
- Remove the 5 screws from the back panel with a type 0 Philips head.
- Then pull the panel towards you in a slightly upwards motion.
- Separate the panel from the laptop.

### Step 3



- Take the silver panels from both sides of the back of the laptop by removing the screw using a type 0 Philips head.
- Slide the silver panel away from you to reveal some wires.
- Remove the two wires white and gray by gently pulling up and detaching them.
- After the wires are detached, gently pull the wires away from you to remove them from the groove they are in.

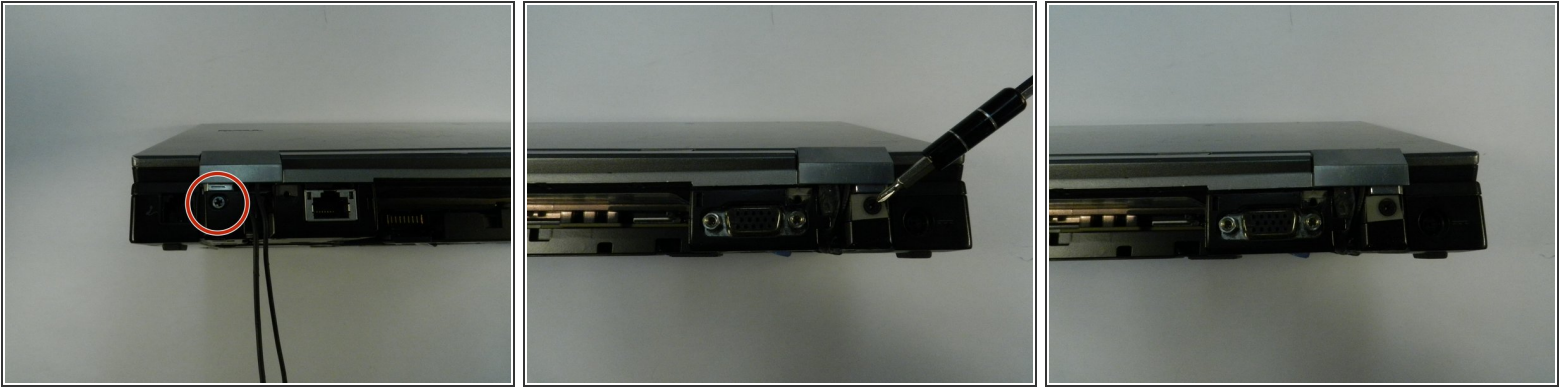
### Step 4



- Under the side silver panel, there is a channel. To disconnect gently use your nail and flick it up and to the right.
- Once the channel is disconnect, there are two wires. Repeat the same method as the channel to disconnect the wires.
- Move the channel and wires out of the groove to remove the screen.

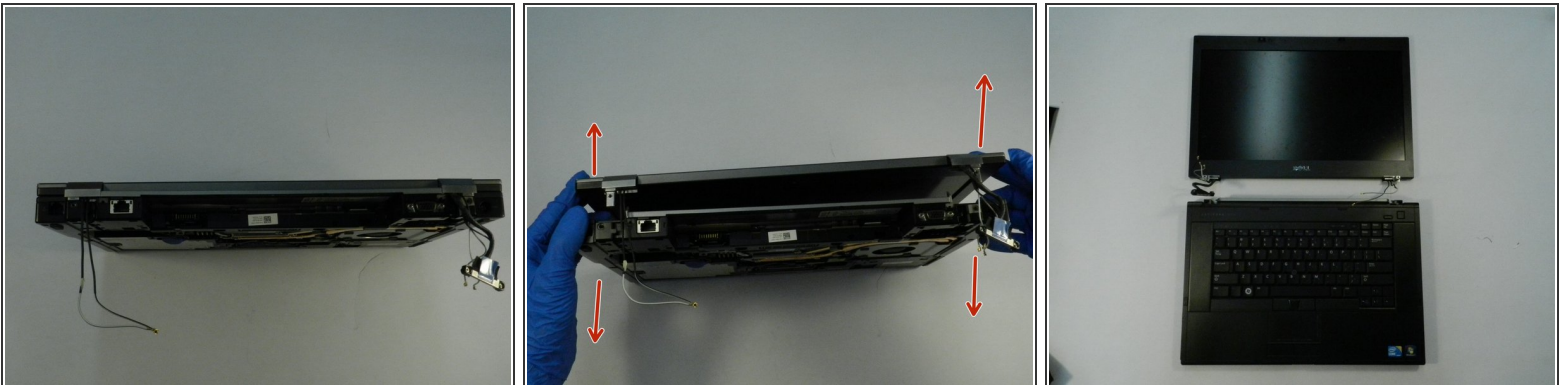
This document was generated on 2022-12-31 07:03:11 AM (MST).

## Step 5



- Orient the laptop on its side, prop it slightly open to keep it stable on your desk.
- Unscrew the silver screw on the left side using a type 0 Phillip's head.
- Unscrew the black screw on the right side using a type 0 Philips head.

## Step 6



- Since the screws and wires are disconnect, the screen is ready to be disconnected also.
- Gently hold the LCD screen with your pointer fingers on either side.
- While firmly holding the bottom of the laptop with your thumbs pull the two parts away from each other.

To reassemble your device, follow these instructions in reverse order.