



HP 15-da0012dx SSD Replacement

If the laptop does not boot correctly after...

Written By: Xavier Hung



INTRODUCTION

If the laptop does not boot correctly after running the "Startup Repair" from the Windows 10 DVD, use this guide to remove and replace your SSD. You will need a plastic opening tool and a Phillips #1 screwdriver head.

TOOLS:

[iFixit Opening Tool](#) (1)
[Phillips #1 Screwdriver](#) (1)

PARTS:

[Crucial P3 NVMe PCIe M.2 2280SS SSD](#) (1)
[Crucial P3 Plus NVMe PCIe M.2 2280SS SSD](#) (1)
[Crucial P5 Plus PCIe M.2 2280SS SSD](#) (1)

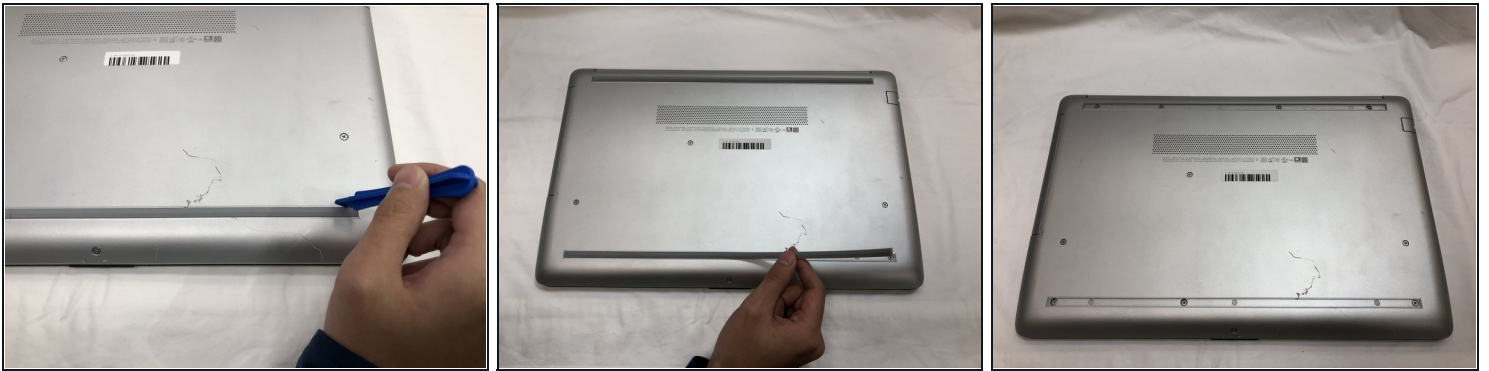
Step 1 — Battery



 Power down your laptop before proceeding.

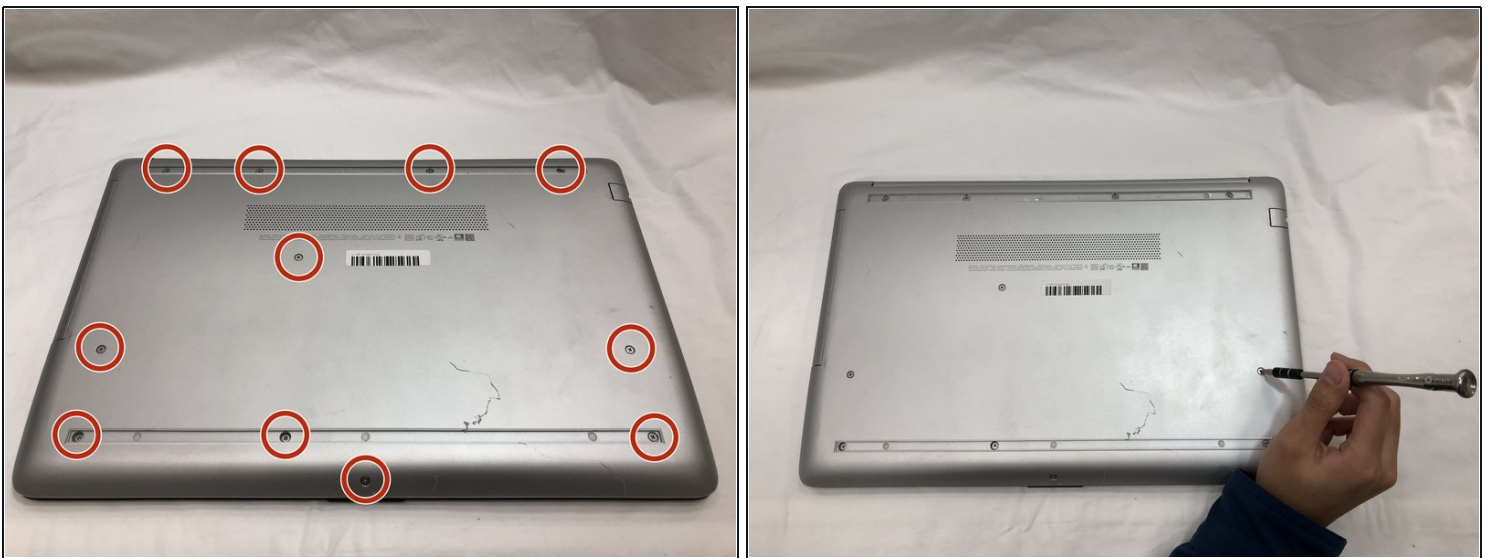
- Turn your laptop over so that the Laptop Identification Tag on the underside of the laptop faces the ceiling.

Step 2



- Using the plastic opening tools, peel back the plastic feet from the underside of the laptop.

Step 3



- Using a Phillips #1 screwdriver, remove the eleven 9.0 mm screws holding the back cover in place.

Step 4



- Slide the optical drive out of the computer.

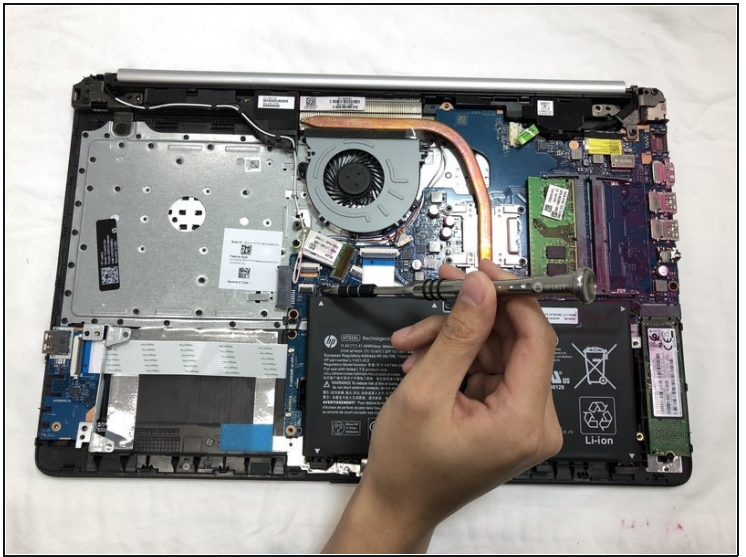
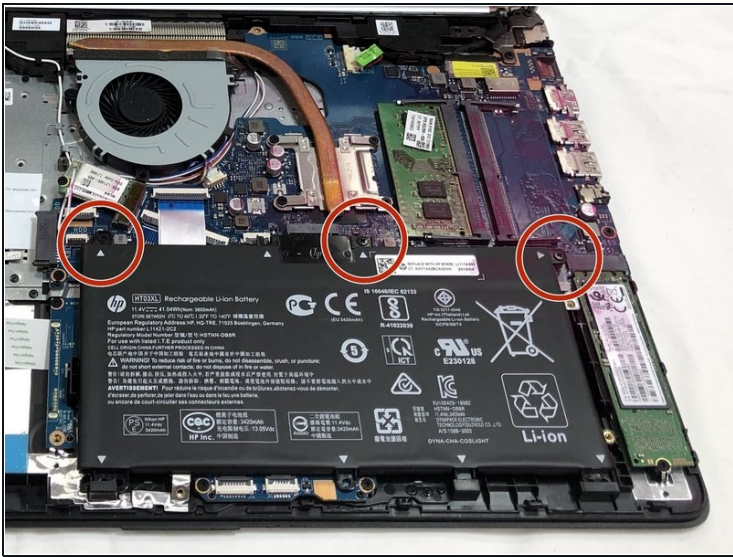
Step 5



- Flip the computer over and open the screen.
- Start from a corner and run the plastic opening tools along the edge of the back cover.
- After the cover has been completely loosened around the entire perimeter, close the screen and flip the computer over.
- Gently pry back the cover starting from the middle, bottom edge.

⚠ Make sure not to bend or crack the plastic cover.

Step 6



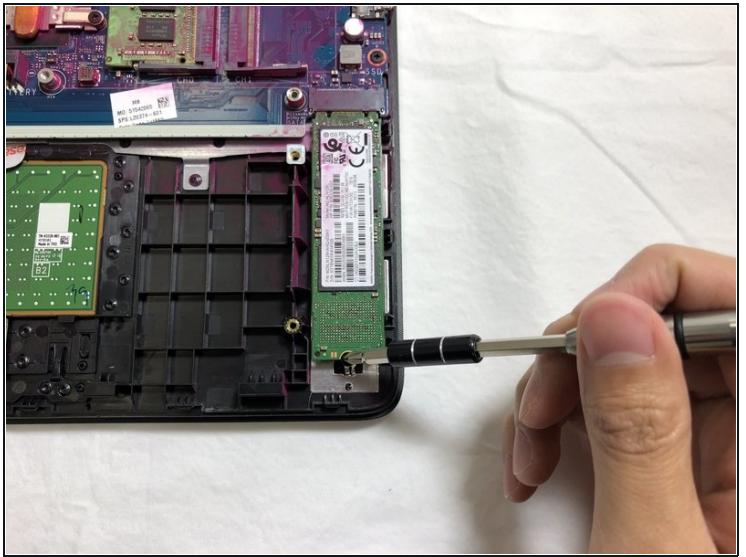
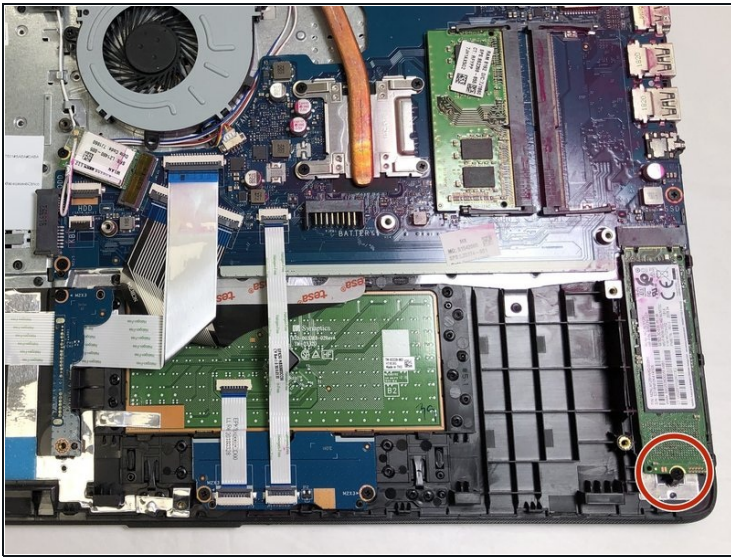
- Using the Phillips #1 screwdriver, remove the three 8.0 mm screws holding the battery in place.

Step 7



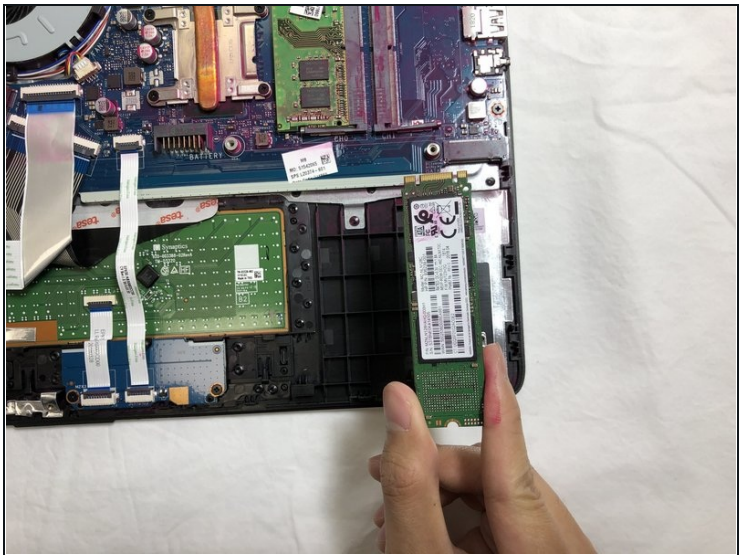
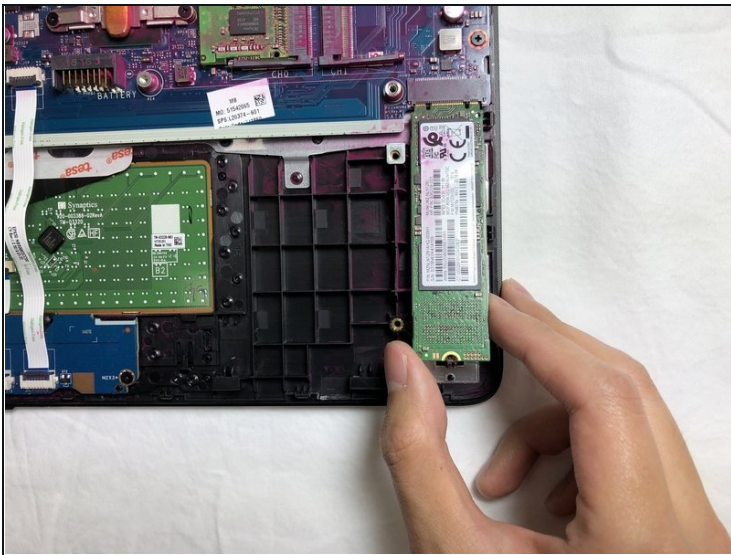
- Remove the battery by tilting the top of the battery towards you and pulling the battery away from the mounting tabs.

Step 8 — SSD



- Using the Phillips #1 screwdriver, remove the single 3.0 mm screw holding the SSD module in place.

Step 9



- Pull the SSD module away from the socket.

To reassemble your device, follow these instructions in reverse order.