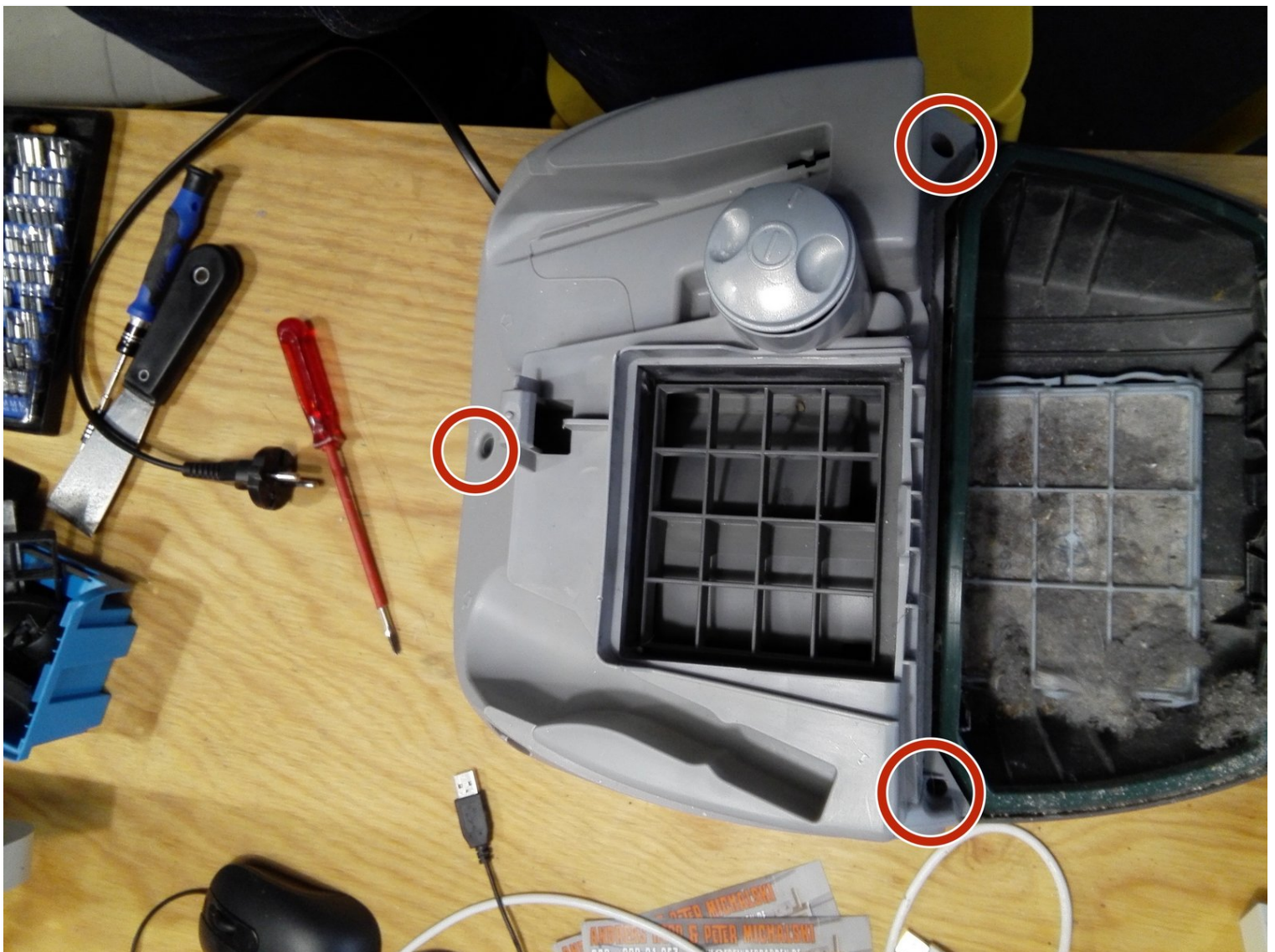
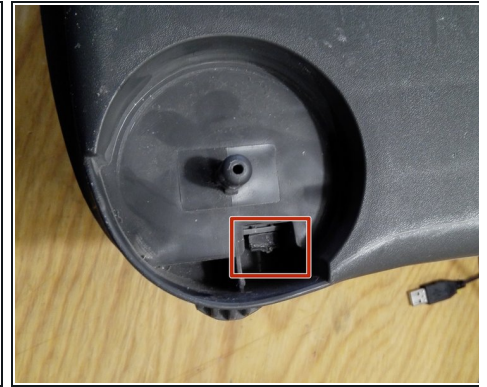
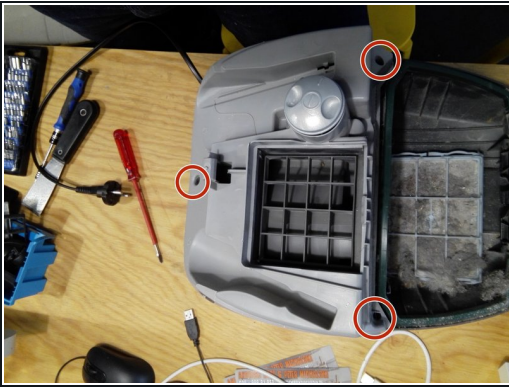


Siemens Synchropower power edition 2400W vacuum cleaner switch replacement

Written By: Andreas Reheis

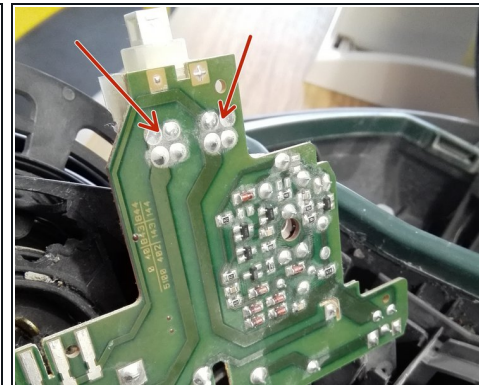
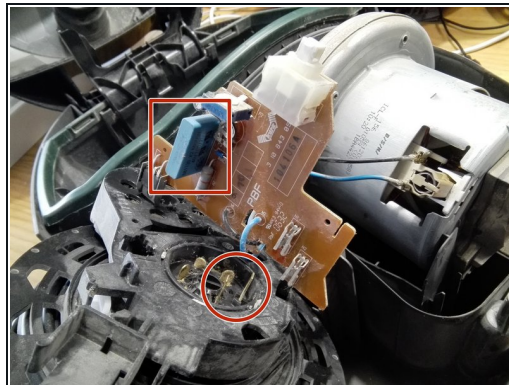
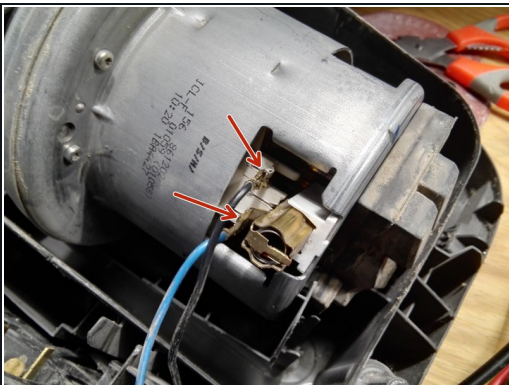


Step 1 — Switch



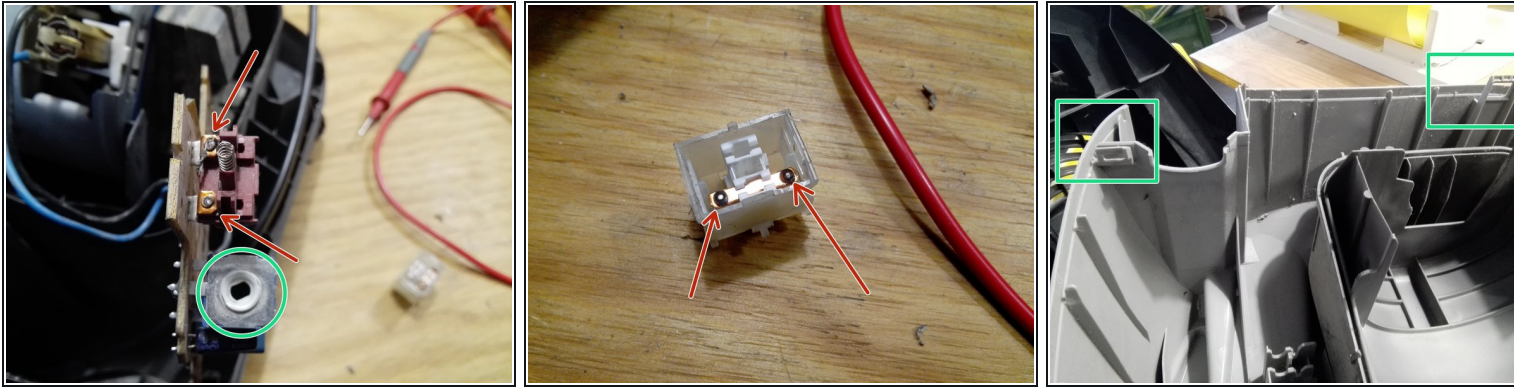
- Open the cover of the device and remove the 3 Torx screws. Then pry off the two wheels with a flat screwdriver. Now bend open the clip at the marking with the flat screwdriver. Unfortunately it's a bit stiff. The clip on the other side will loosen with a little force when you pry off the housing cover.

Step 2



- First, I measured the winding of the motor on the black and blue cable. The engine has a passage. I bent the carbon brushes (copper tubes) and checked the length. With 3 cm still like new.
- I measured the connection cable from the plug to the two contacts on the cable roller. I examined the board for charring, especially the condenser (also for deformation).
- Finally, I checked the passage at the two solder points of the white switch. That was the problem. There was no contact.

Step 3



- The white cover of the switch can be removed very carefully with a flat screwdriver. Then clean the 4 contact points with contact spray and "impregnate" them again with Balistol. Reconnect and check the continuity again.
- During reassembly, make sure that the rotary switch installed in the housing with its elongated nose slips back into the green marked rotary potentiometer on the board.
- The clips marked in green will snap back in during assembly. The 3 Torx must be screwed back in.

To reassemble your device follow the steps in reverse order.