



HP Chromebook 14-x010wm Battery Replacement

How to replace the battery in an HP Chromebook 14-x010wm.

Written By: Tyler Stover



INTRODUCTION

Utilize this guide if you need to replace the battery in an HP Chromebook 14-x010wm laptop, or if you need to remove the battery as a prerequisite step in other repair procedures. Removing the battery requires removing the keyboard cover and a number of connectors to other components. It is important to proceed carefully through this procedure to avoid damaging other components.



TOOLS:

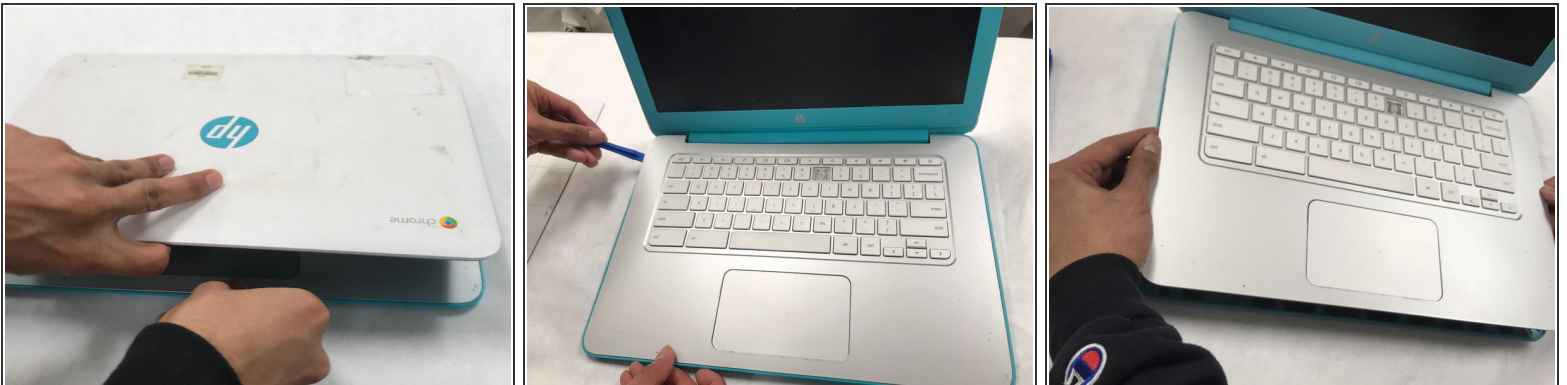
- [iFixit Opening Tools](#) (1)
 - [Phillips #00 Screwdriver](#) (1)
-

Step 1 — Battery



- Remove the thirteen 5.7mm screws from the back of the laptop using a Phillips #00 screwdriver.
- i Remove rubber covers to reveal concealed screws, as needed.

Step 2



- Flip the laptop over carefully and open the cover.
- Use a plastic opening tool to pry open the front edge and along the sides of the keyboard cover to separate it from the computer's base.
- Lift the keyboard cover from the computer's base carefully.

Step 3



⚠️ Lifting the keyboard cover too much may damage the internal cables of the laptop.

- Lift the black plastic flap, using a plastic opening tool, of the zero insertion force (ZIF) connector that holds the keyboard cable in place.
- Disconnect the keyboard cable by slowly pulling it from the system board.
- Lift the black plastic flap that holds the battery cable in place using a plastic opening tool.
- Remove the battery cable by slowly pulling the plastic connector towards you.
- Remove carefully and set aside keyboard panel.

Step 4



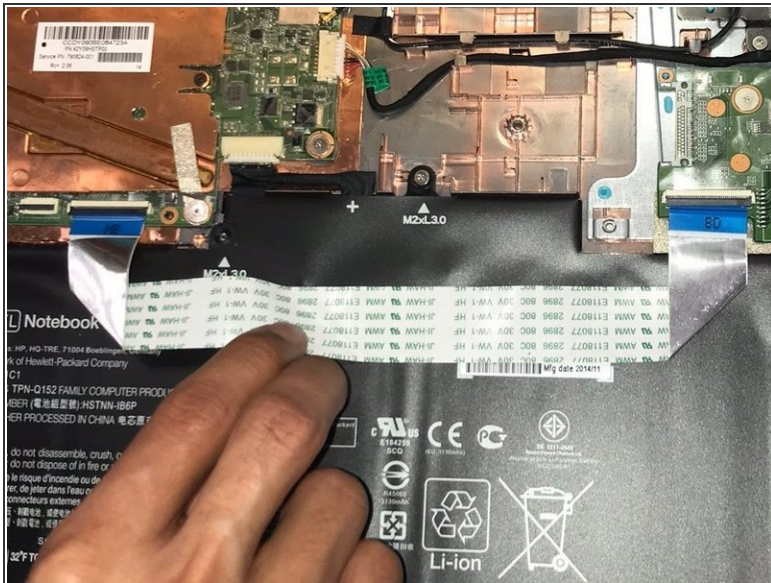
- Flip the plastic flap holding the battery cable using a plastic opening tool.
- Disconnect the battery cable by carefully pulling it from the system board.

Step 5



- Remove the seven M2xL3.0 screws from around the battery using a Phillips #00 screwdriver.

Step 6



- Peel the wire band off of the battery carefully.
- Remove the battery by lifting slightly, then slowly pull it towards you.

Follow these instructions in reverse order to reassemble your device.