



# Original iPhone Dock Teardown

Written By: Nicholas Ouimet



## INTRODUCTION

In today's teardown, we will be cracking open the white plastic dock that came with the Original iPhone. The dock works only with the original iPhone. However, by removing the top cover of the dock, you can use the dock with other Apple products that have a 30 pin connector. In this teardown, you can modify the dock to be universal.

**WARNING: THIS DISASSEMBLY WILL VOID YOUR DOCK'S WARRANTY.**



### TOOLS:

- [Flathead Screwdriver](#) (1)
  - [Heat Gun](#) (1)
  - [Metal Spudger](#) (1)
  - [Phillips #1 Screwdriver](#) (1)
  - [Spudger](#) (1)
-

## Step 1 — Original iPhone Dock Teardown



- The Original iPhone dock!
- This dock only holds the original iPhone. It will not hold the iPhone 3G/3GS as it is wider and thicker.

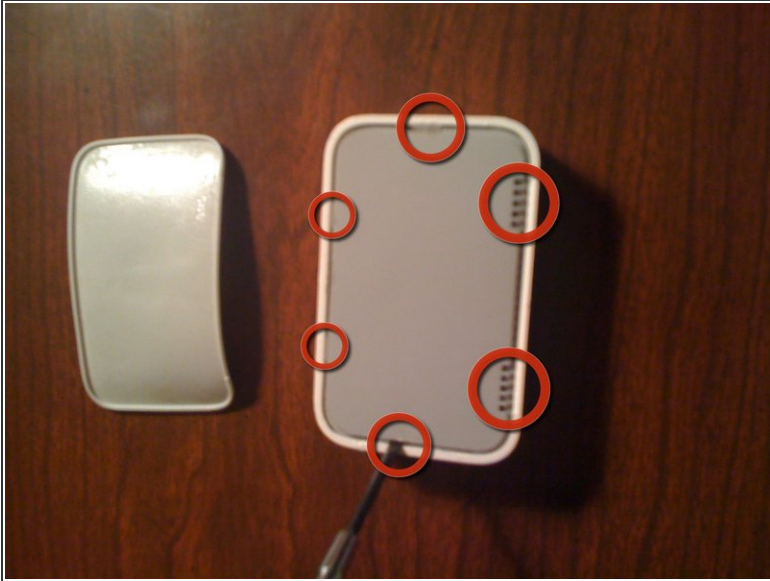
## Step 2



- Use a hair dryer or heat gun to weaken the adhesive holding the rubber foot to the dock.
- Use a razor blade or flathead screwdriver to pull up part of the rubber foot.
- While still hot, pull the rubber foot off the dock.



### Step 3



- Using a spudger or a flat head screwdriver, release the 6 clips holding the dock to the white plastic molding.
- ⓘ You will need to pry this out as the dock contains a weight that is stuck to the top casing with adhesive.

### Step 4



- Heat up the adhesive that covers the three screws, so you can unscrew the screws that hold the weight in the base of the dock.

## Step 5



- Remove the three screws holding the weight to the bottom plate.

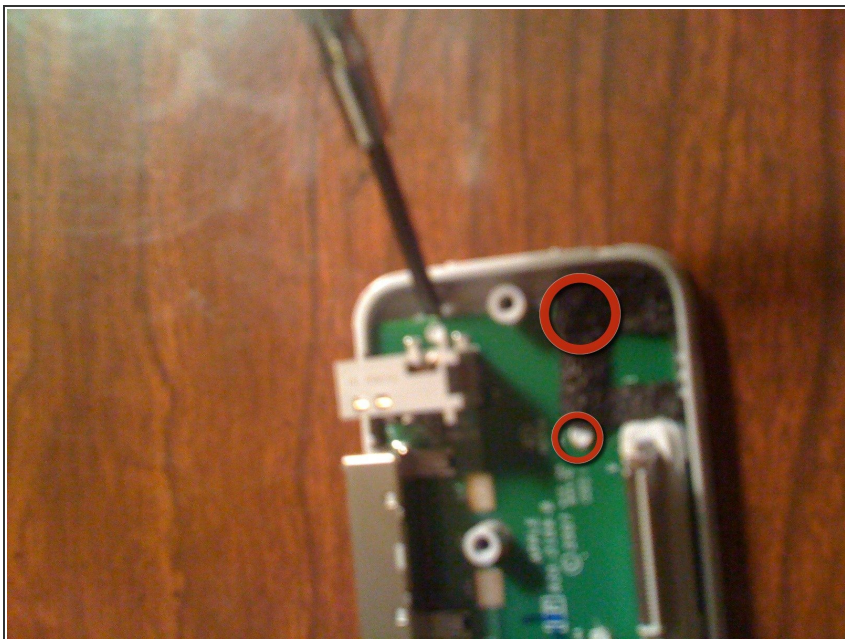
## Step 6



- The dock should look like this.
- If not, go back and see what you did wrong.

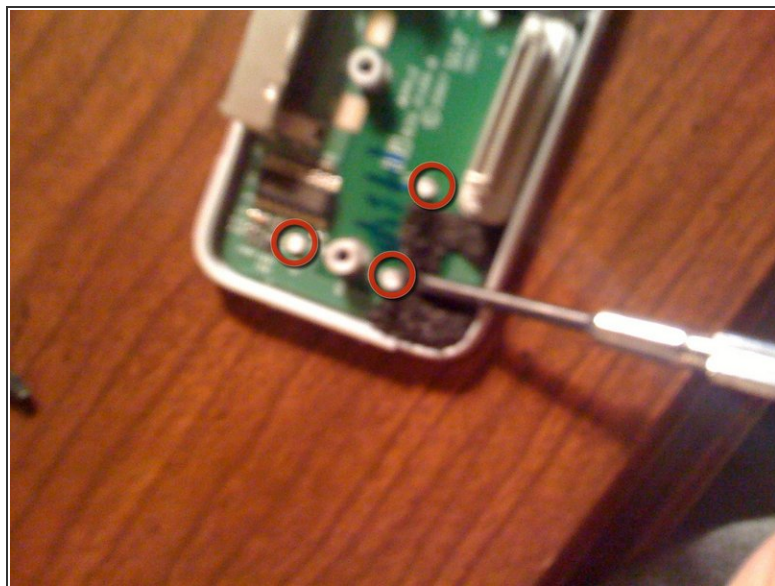
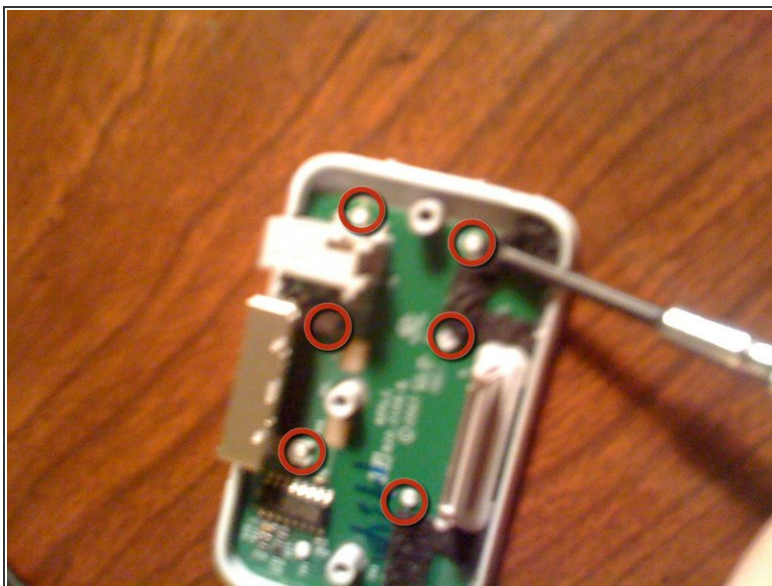


## Step 7



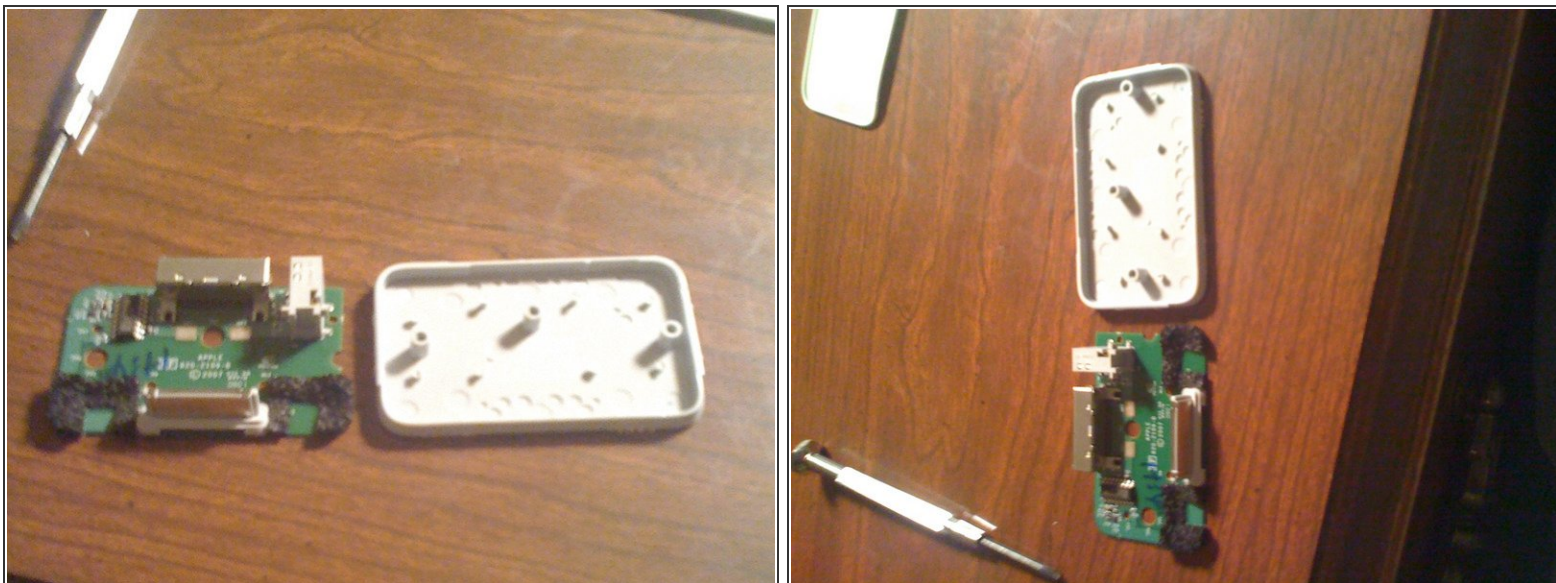
- Now remove the green logic board from the little plastic pegs on the bottom plate.
- There is one peg under each black foam padding.

## Step 8



- The little white things are the pegs.
- Gently use a spudger or flathead screwdriver to pry the logic board from the bottom plate.
  - ⚠ Be very careful, as you could break the board doing this.

## Step 9



- Once done separating the logic board from the bottom plate, you should have 2 parts.

## Step 10



- Disassembly is now complete. You will have five separate parts as shown in the picture.



## Step 11



- Boom! Your done. It took me 32 minutes to figure this out with out damaging the dock.
- I can do it in 3 minutes now that I've mastered the process.
- ⓘ If you don't replace the white top cover of the dock when reassembling, you will have a universal dock, that can also be used with an iPhone 3G/3GS.
- ⓘ It will also work with any iPod with a 30 pin connector.

To reassemble your device, follow these instructions in reverse order.