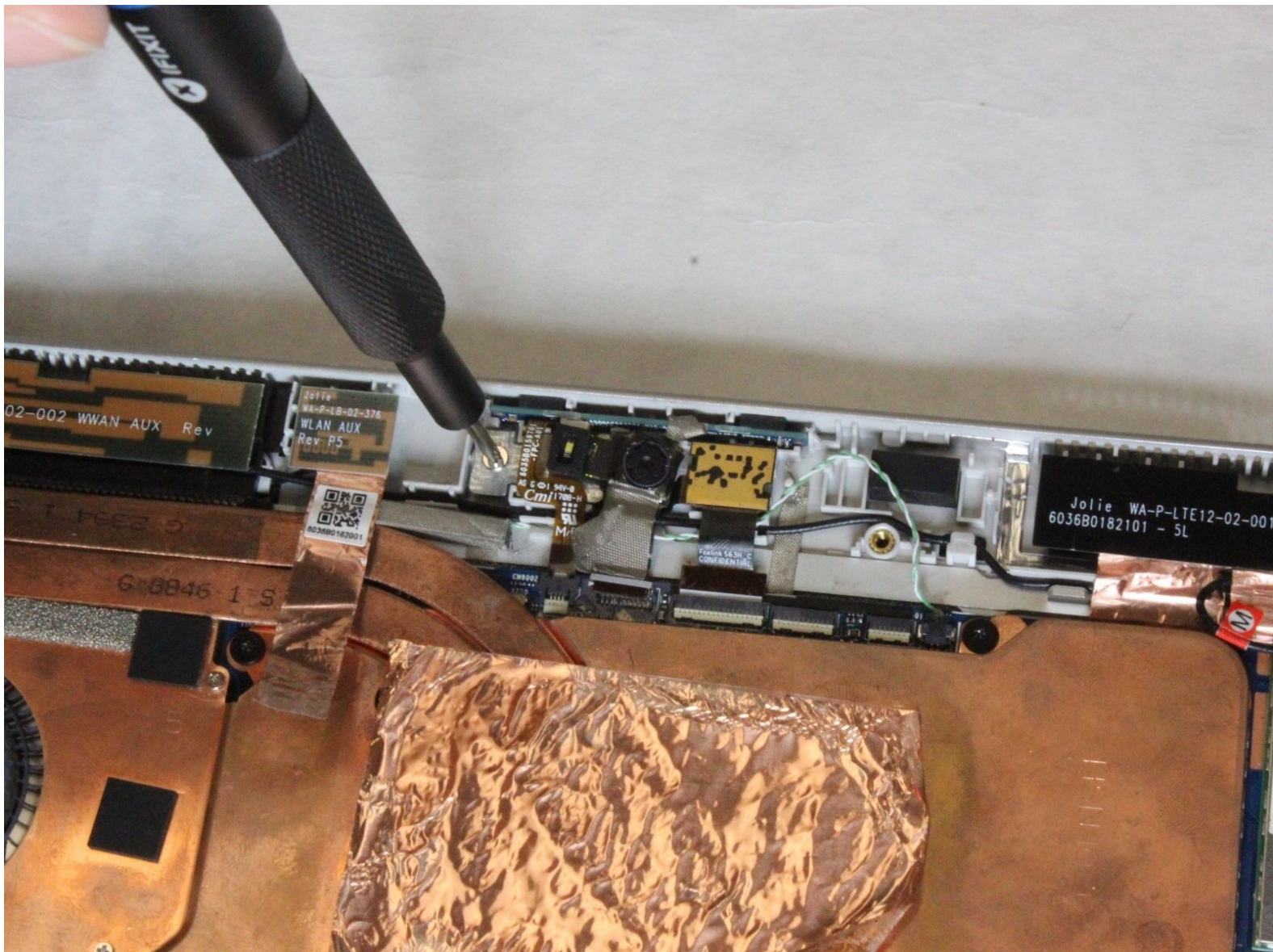




HP Elite x2 1012 G2 Rear Facing Camera Replacement

This guide will walk you through removing the rear-facing camera on your HP Elite x2 1012 G2.

Written By: WesleyEagleson



INTRODUCTION

If your rear-facing camera on your HP Elite x2 1012 G2 is broken or not working properly, this guide will walk you through replacing it. Before using this guide, make sure that the rear camera is the source of your problems by troubleshooting the symptoms. Doing the replacement yourself does not require any special skills and only takes a little of your time.



TOOLS:

- [iFixit Opening Tool](#) (1)
 - [T5 Torx Screwdriver](#) (1)
 - [Suction Handle](#) (1)
 - [Phillips #00 Screwdriver](#) (1)
-

Step 1 — Screen



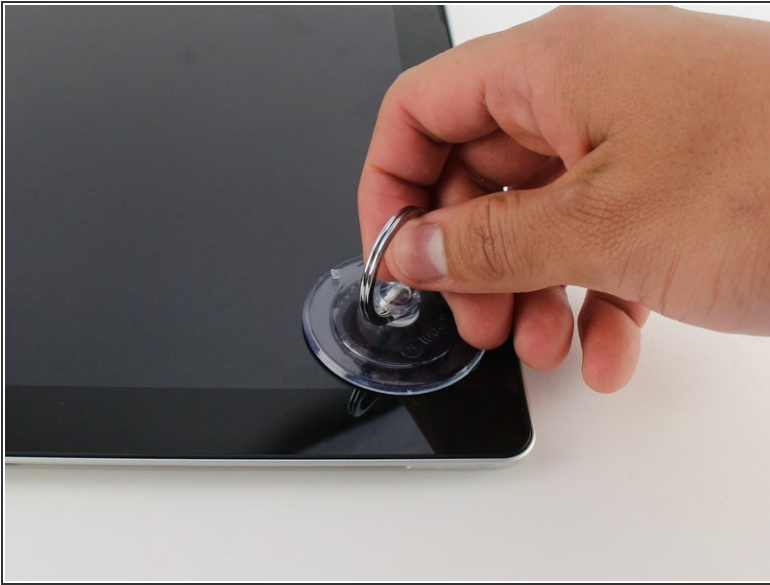
- ❗ Make sure the device is turned off before starting.
- Orient the device so the back is facing you, with the kickstand up.

Step 2



- Remove the six 3mm Torx T5 screws underneath the kickstand.

Step 3



- Turn the device over so the screen is facing you.
- Place a suction cup firmly onto a corner of the screen.
- Lift up gently until you see the screen separate from the casing.
- Repeat this process for all four corners.

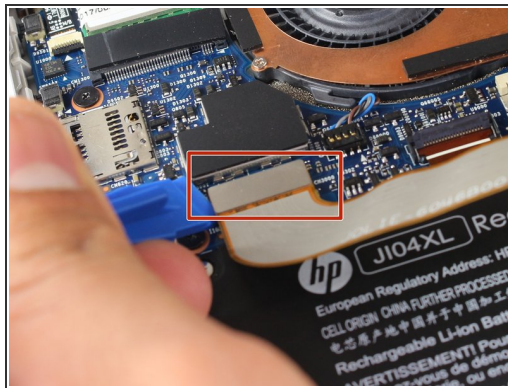
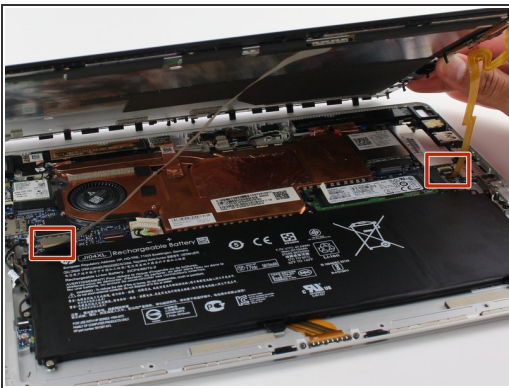
Step 4



- Lift the screen up and off of the device.

⚠ Pry each corner up first, otherwise you may damage or crack the screen.

Step 5



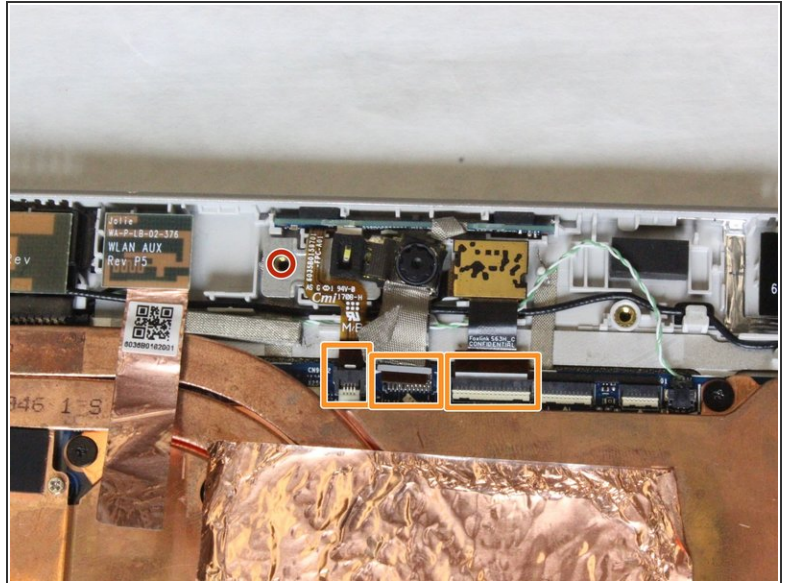
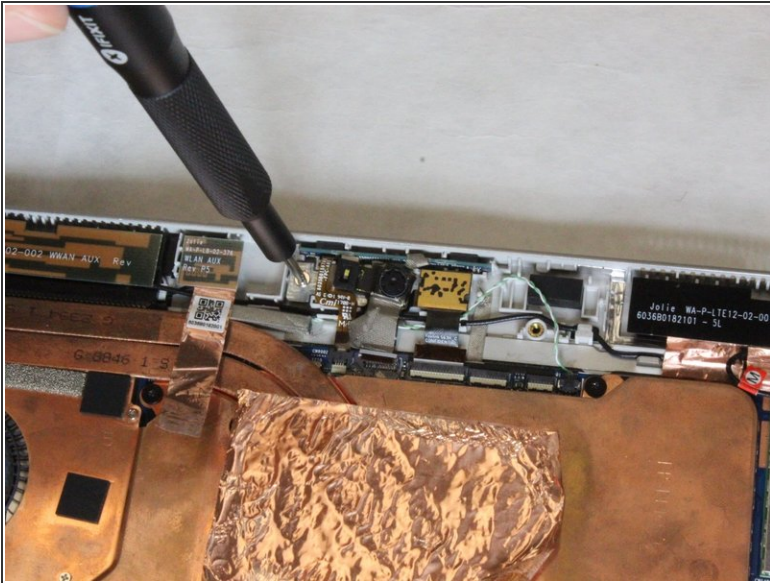
- Remove the two connectors on the back of the screen by lifting the connector tabs on the motherboard with a plastic opening tool and pulling gently.

Step 6



- Remove the screen by gently lifting it off of the device.

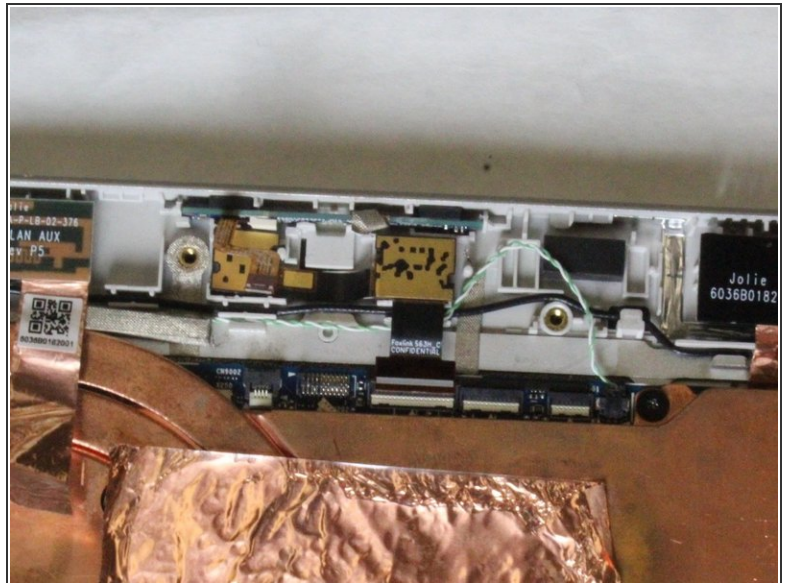
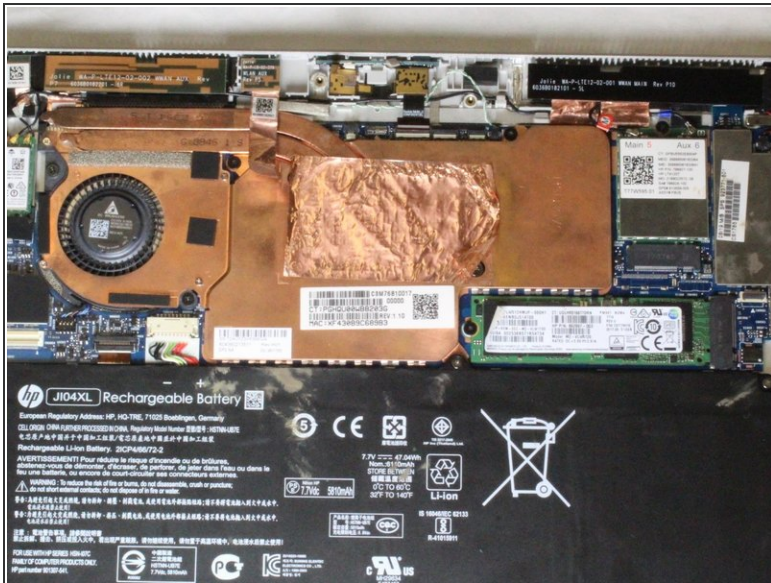
Step 7 — Rear Facing Camera



- Locate the cameras at the top center of the power and processing unit.
- Use a Phillips #00 screwdriver to remove the single 3 mm screw.
- Use a spudger tool to lift up the ribbon cable clamps.

⚠ Be careful not to crease or damage the ribbon cables or connectors.

Step 8



- Remove the front-facing camera.
- Remove the metal bracket securing the rear-facing camera.
- Remove the rear-facing camera.

To reassemble your device, follow these instructions in reverse order.