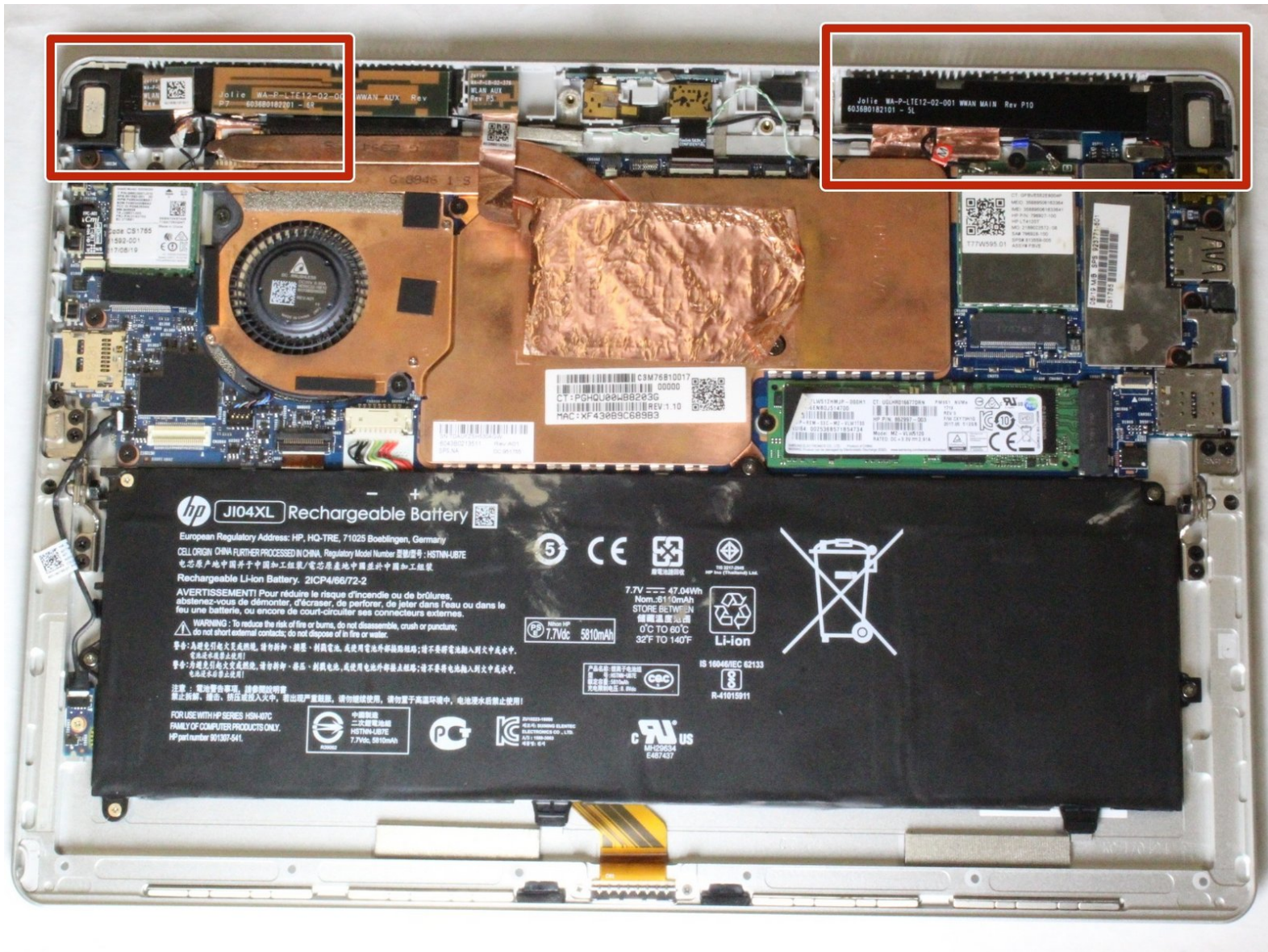




HP Elite x2 1012 G2 Speakers Replacement

This will guide you through the process of replacing the speakers.

Written By: WesleyEagleson





TOOLS:

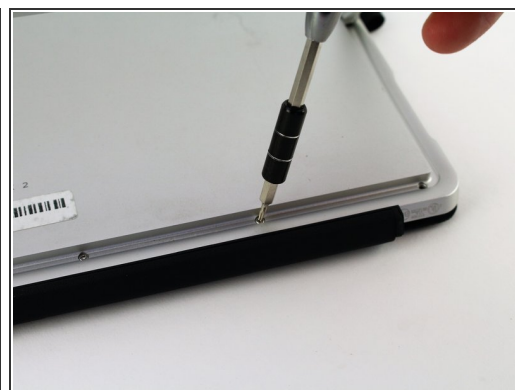
- [iFixit Opening Tool](#) (1)
- [T5 Torx Screwdriver](#) (1)
- [Suction Handle](#) (1)

Step 1 — Screen



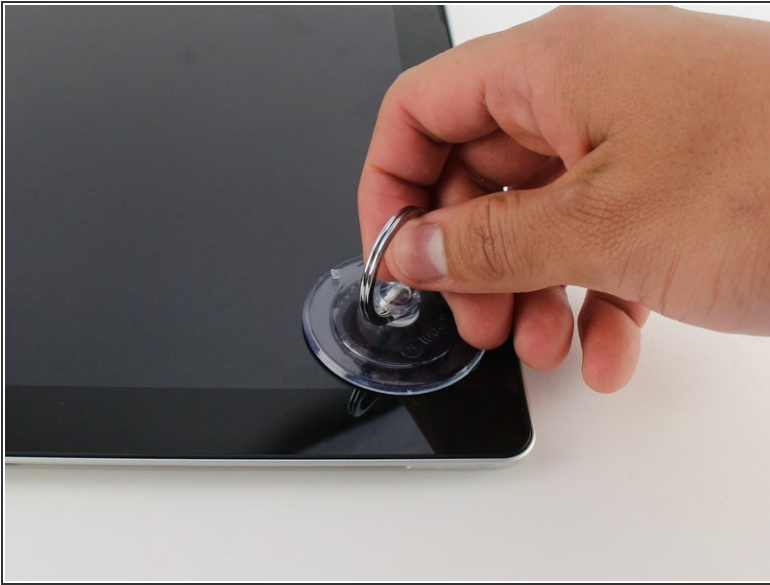
- ❗ Make sure the device is turned off before starting.
- Orient the device so the back is facing you, with the kickstand up.

Step 2



- Remove the six 3mm Torx T5 screws underneath the kickstand.

Step 3



- Turn the device over so the screen is facing you.
- Place a suction cup firmly onto a corner of the screen.
- Lift up gently until you see the screen separate from the casing.
- Repeat this process for all four corners.

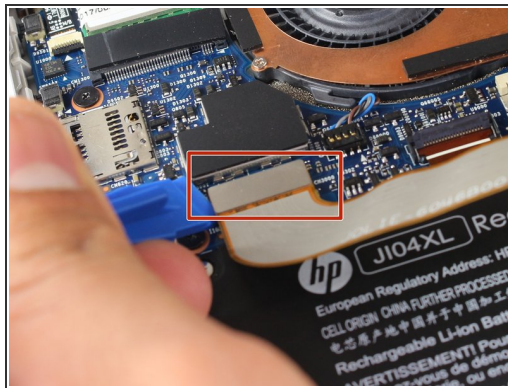
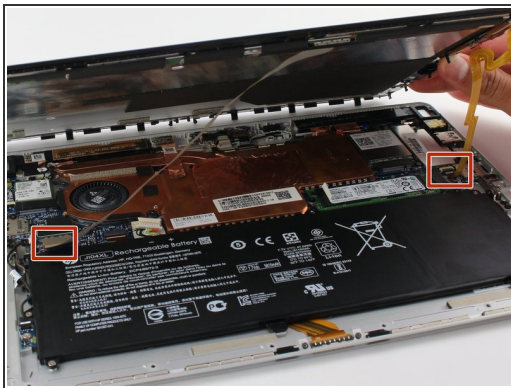
Step 4



- Lift the screen up and off of the device.

⚠ Pry each corner up first, otherwise you may damage or crack the screen.

Step 5



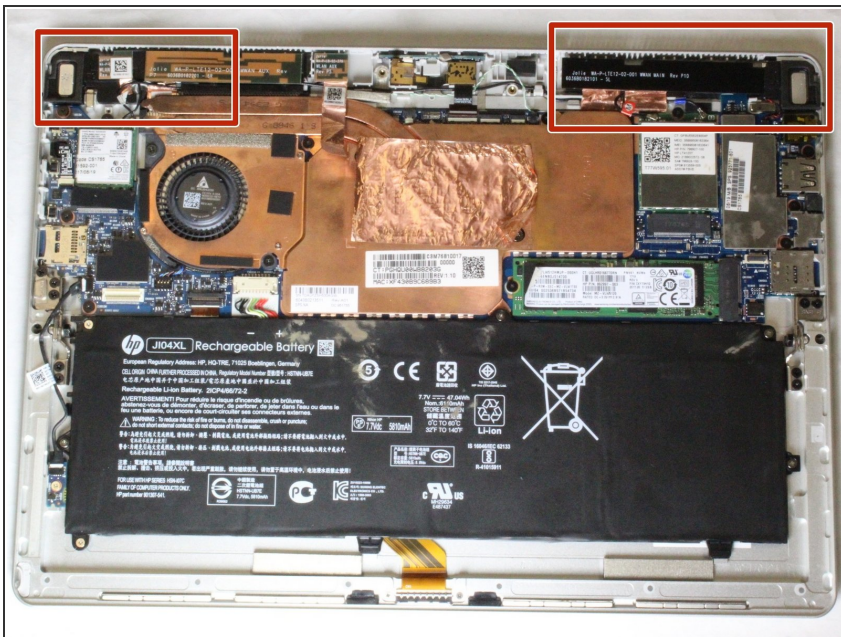
- Remove the two connectors on the back of the screen by lifting the connector tabs on the motherboard with a plastic opening tool and pulling gently.

Step 6



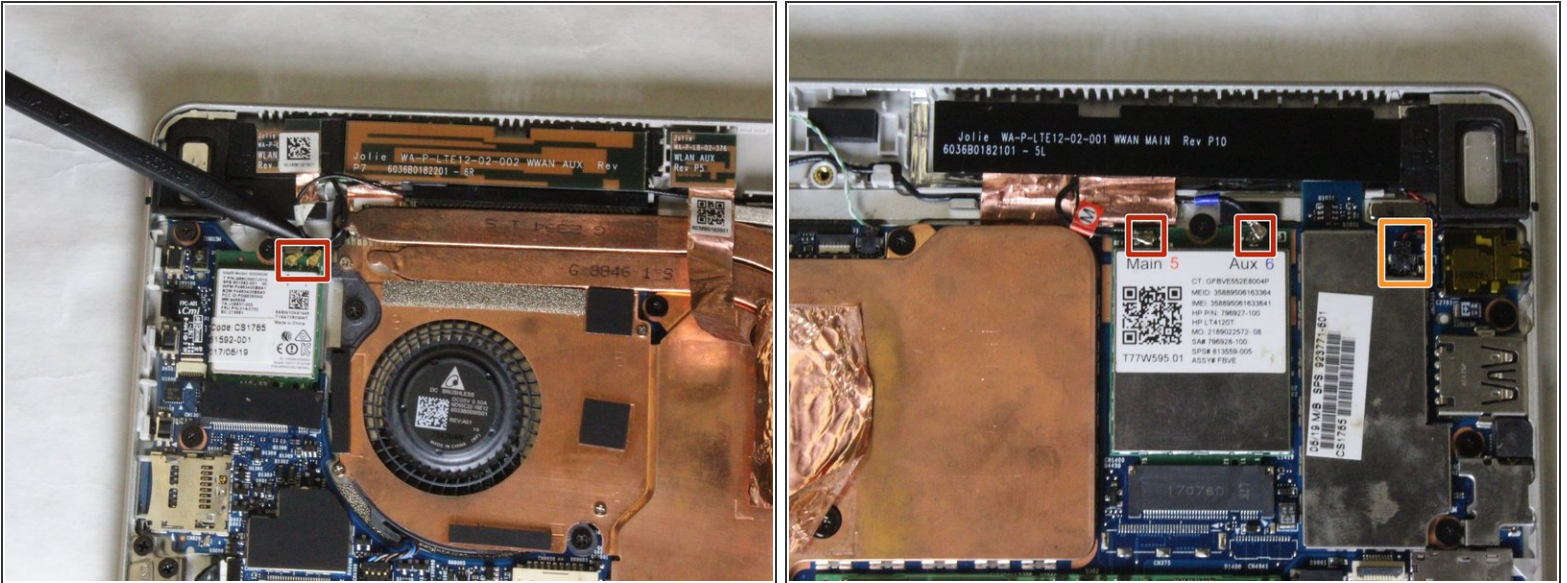
- Remove the screen by gently lifting it off of the device.

Step 7 — Speakers



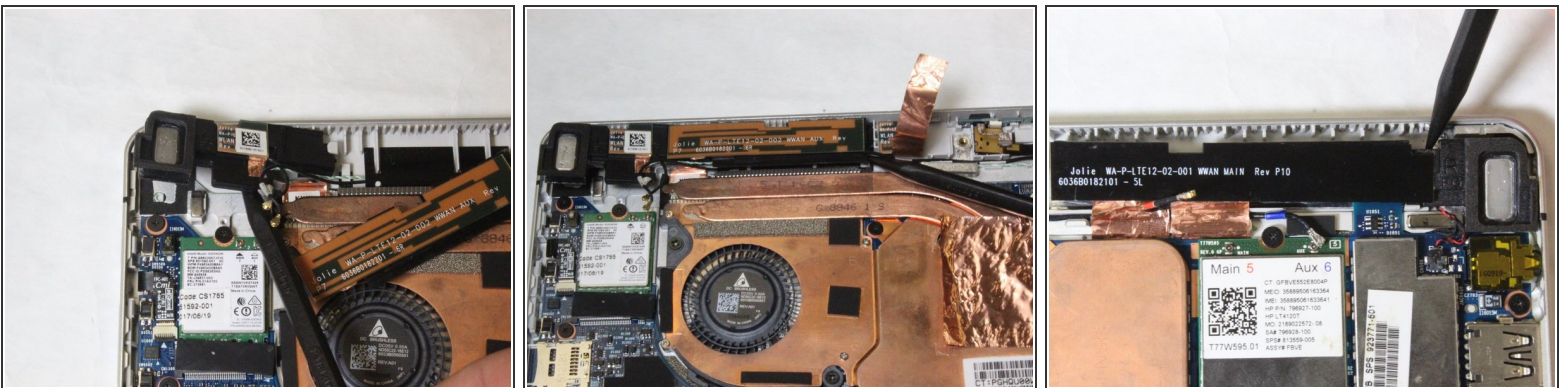
- Identify the speaker locations.

Step 8



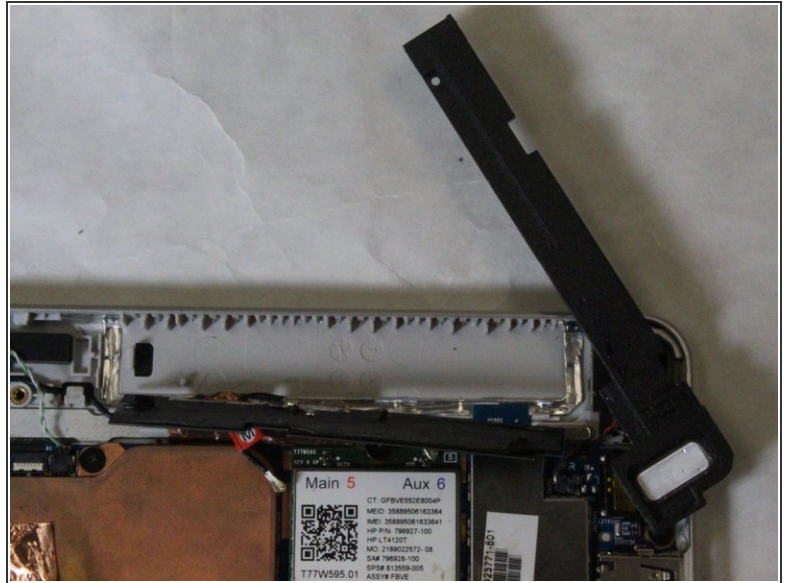
- Remove the antennae connections from both the WiFi card and the wireless cellular M.2 card.
- Gently pull the black and red wire free at the motherboard connector.

Step 9



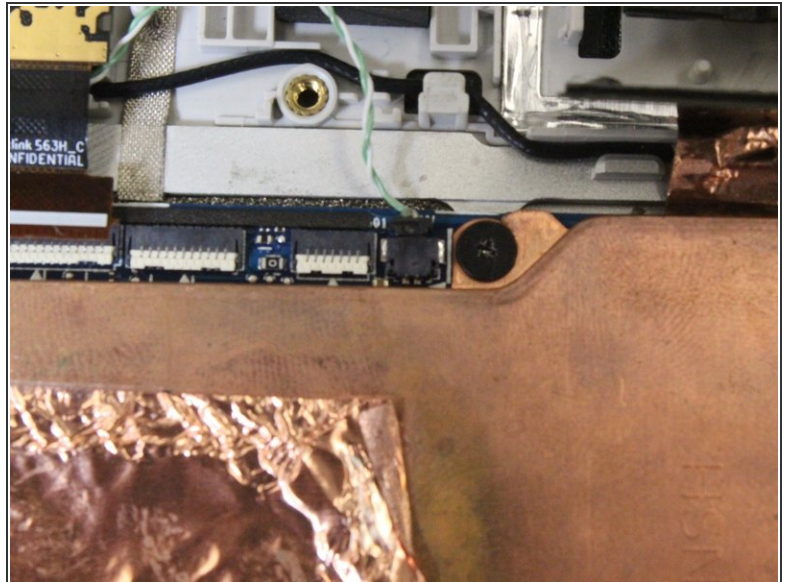
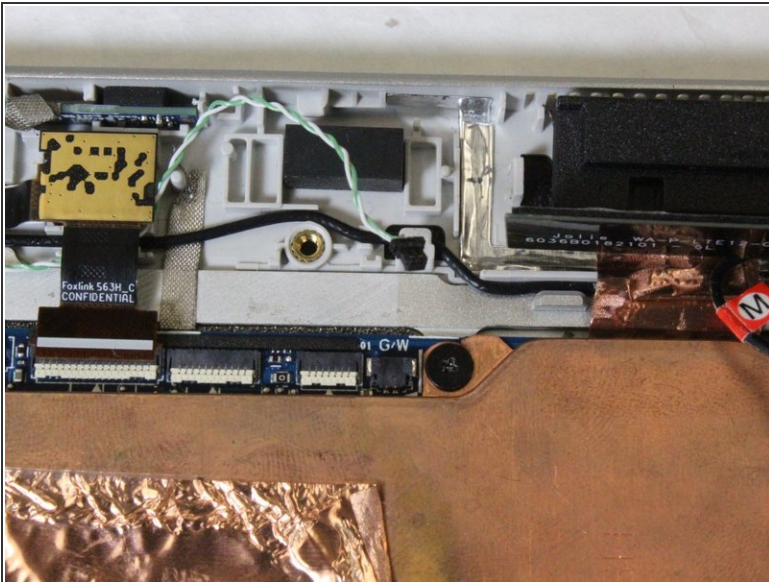
- Use the spudger tool to remove the speakers from the housing.

Step 10



- On the right speaker, the black antenna piece must be removed before the speaker can be accessed.

Step 11



- Now remove the green and white wires from the cable management track and the speakers will be completely removed from the device.

To reassemble your device, follow these instructions in reverse order.