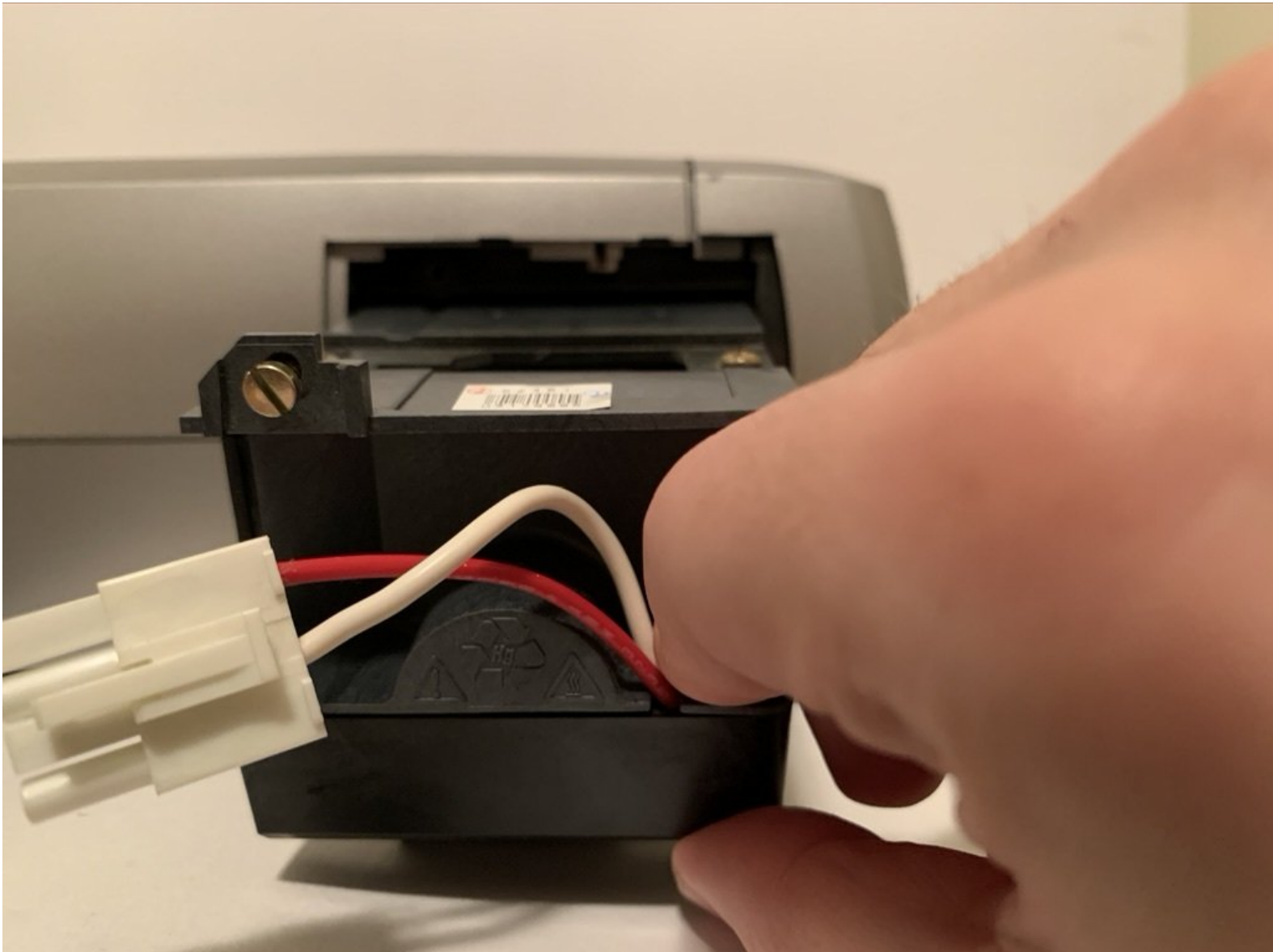




InFocus X2 Lamp Replacement

This procedure will describe how to replace the lamp in the InFocus X2 projector.

Written By: Paul Duarte



INTRODUCTION

The InFocus X2 projector's lamp can become burned out, resulting in a picture that is blacked out on one side. This guide will describe how to access the lamp and replace the burned-out part with a new one.



TOOLS:

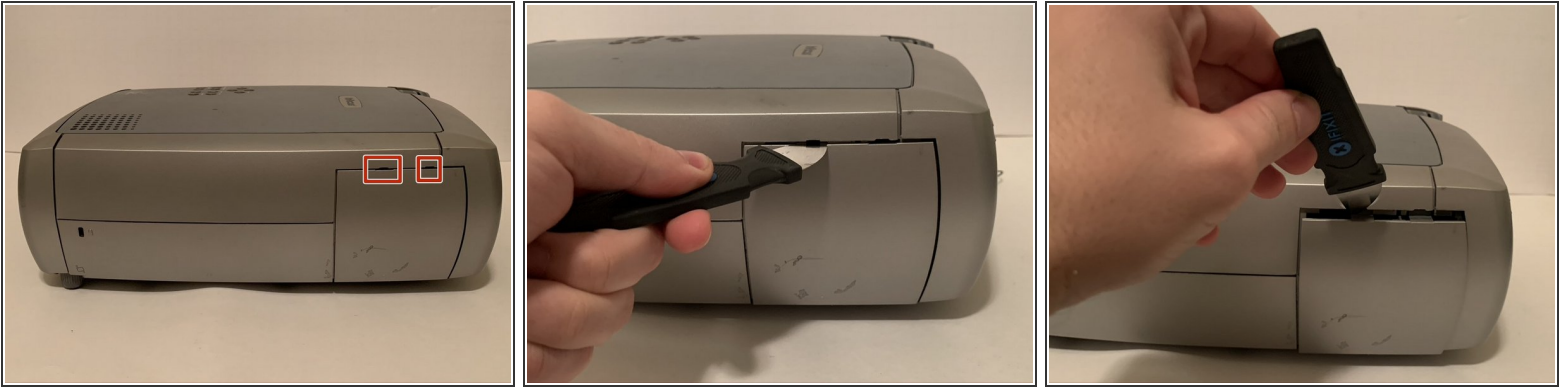
- [Jimmy](#) (1)
- [4.0 mm Flathead Screwdriver](#) (1)



PARTS:

- [1x Replacement InFocus X2 lamp](#) (1)

Step 1 — Open the Lamp Door



 Be sure that the projector is turned off, unplugged, and has cooled for at least 30 seconds.

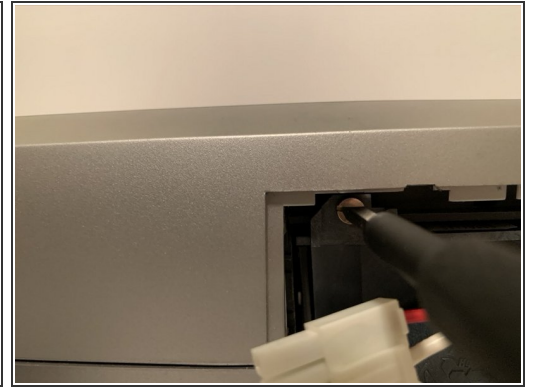
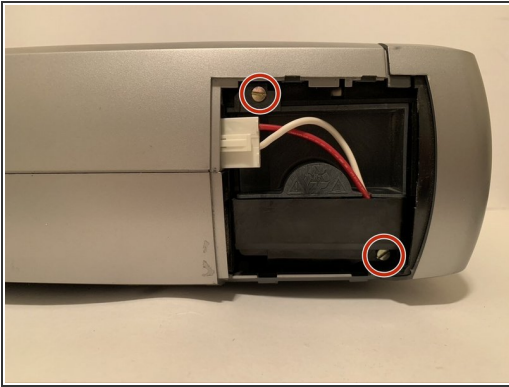
- Insert the Jimmy into one of the two notches on the lamp door's top edge.
- Then use light force on the Jimmy to pry the latch away from the door.
- If necessary, insert the Jimmy into the second latch and separate it from the projector.
- Remove the door away from the projector by hand.

Step 2 — Disconnect the Lamp



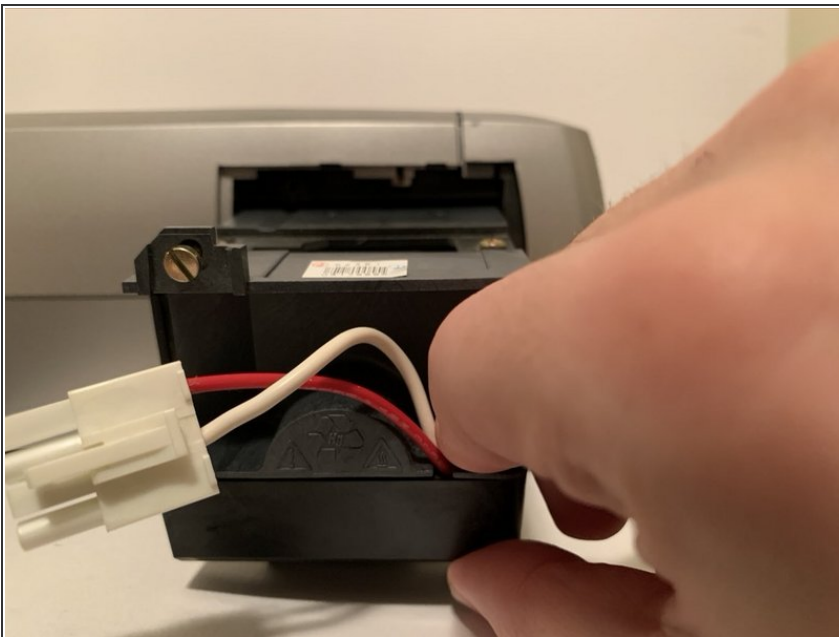
- Gently disconnect the lamp from the projector by using your thumb and forefinger to pinch on the white tab on the plug.
- Then pull the plug away from the projector.

Step 3 — Unscrew the Lamp from the Projector



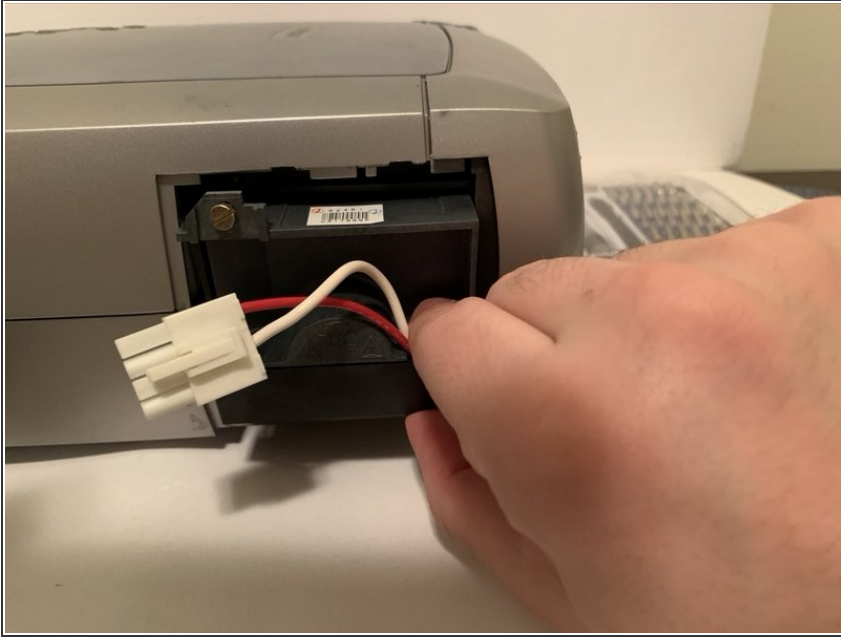
- Use a Phillips #4 screwdriver or driver with the Phillips #4 head to unscrew the two 0.6 mm diameter brass screws from the lamp's housing.
- ⓘ For the lower screw, ensure it remains in the hole in the lamp assembly and it does not fall into the projector. If it falls in the projector, use a magnetized screw bit or a small magnet to pick it up and remove it.

Step 4 — Remove the Old Lamp



- Pull on the bottom plastic tab and remove the lamp by hand.

Step 5 — Insert the New Lamp



- Insert the replacement lamp into the projector.

To reassemble your device, follow these instructions in reverse order.

Caution: The old bulb contains mercury. Please recycle it in a safe and appropriate manner. Look for your local recycling information at <https://earth911.com/>