



Asus ZenFone 5 Lite Vibration Motor Replacement

How to replace the vibration motor on an Asus ZenFone 5 Lite smartphone.

Written By: Philipp Tolxdorf





TOOLS:

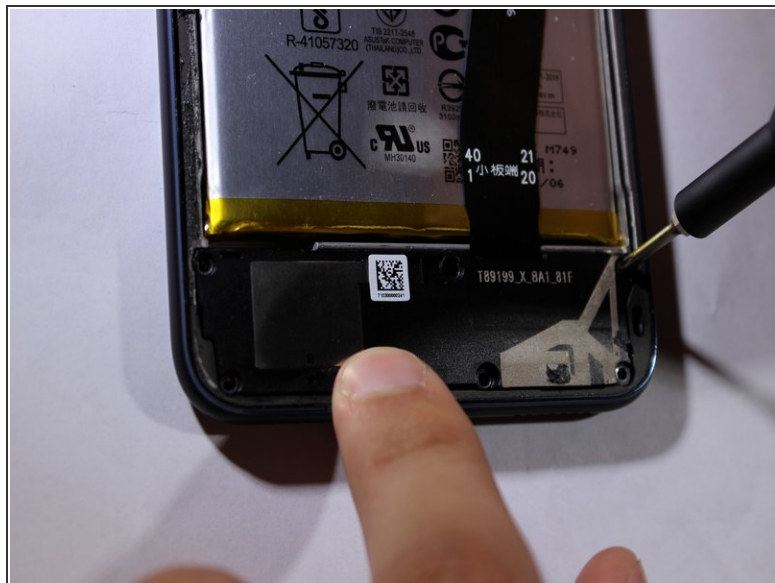
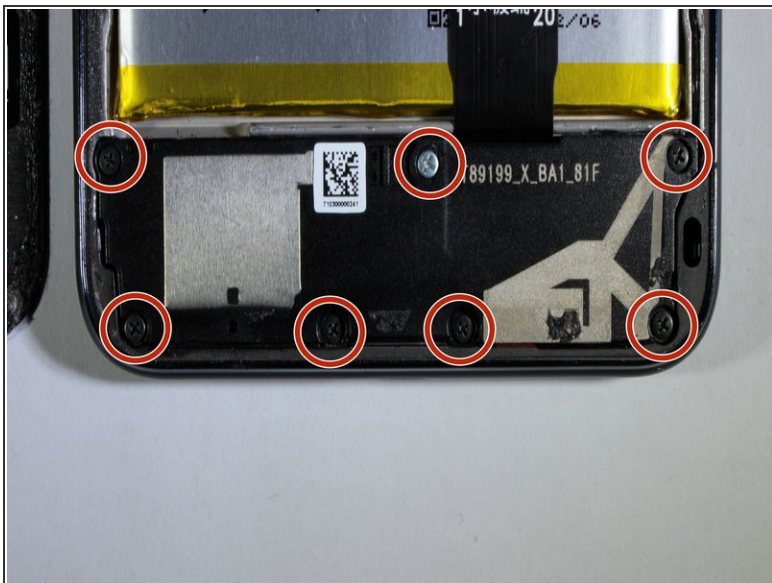
- [iFixit Opening Picks set of 6](#) (1)
- [iFixit Opening Tools](#) (1)
- [Phillips #0 Screwdriver](#) (1)

Step 1 — Charging Port



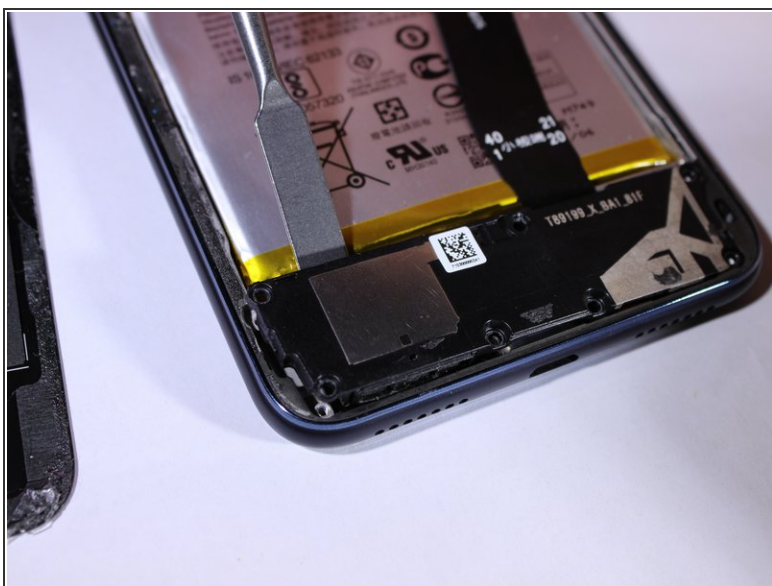
- Use a thin plastic tool to peel the back cover of the phone off. Once the plastic tool has begun to pry the back off, slide the plastic tool around the edges of the phone to separate the adhesive holding the back on. Once all edges of the phone are disconnected, lift the back cover off.
- ⚠ Be careful to keep the cover and the rest of the phone close together so as not to break the connecting band between the touch sensor on the cover and the motherboard of the phone.

Step 2



- Remove the seven Phillips #0 screws located on the bottom of the phone.
- ❗ One of the seven screws is covered by a white sticker with the letters “CS” on it. This screw can be removed with the sticker still attached. Simply pierce through the sticker with the screwdriver and unscrew as normal.

Step 3



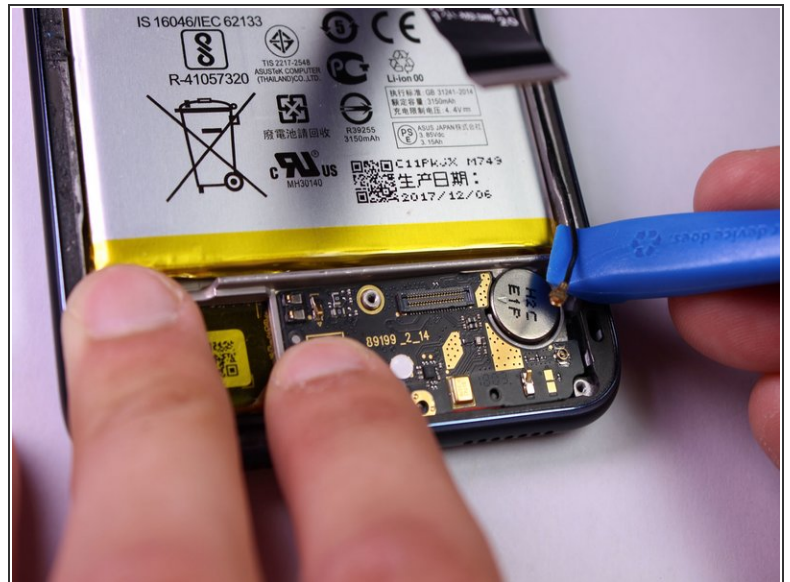
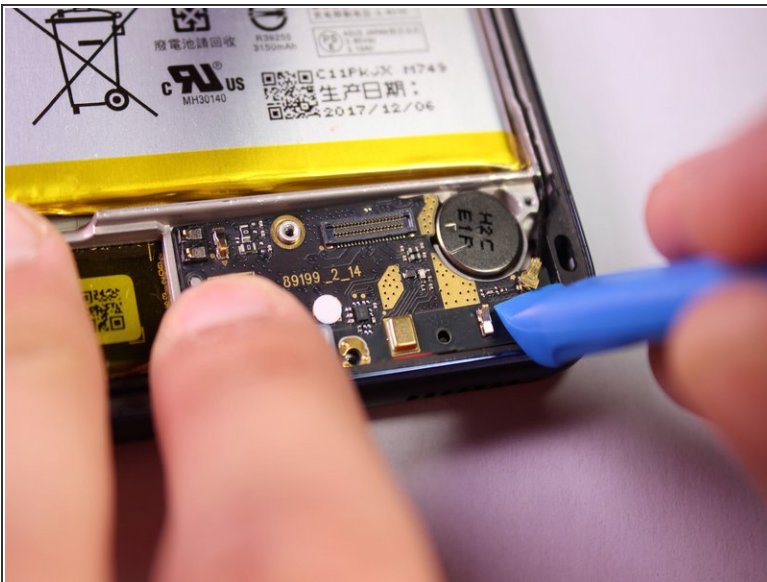
- Use the nylon spudger to pry off the lower cover. Use the opening tool to help lift it off.

Step 4



- Use a prying tool to gently pry off the connection that was previously hidden by the black cover.
- ⚠ Use one finger to hold down the charging port circuit board while prying off the connection to ensure it does not break.

Step 5



- Locate the gold-tipped black wire attached to the charging port circuit board.
- Insert the plastic prying tool underneath the silver clasp and pry it off.

Step 6



- Insert a plastic prying tool on the left side of the charging port. Gently lift up the charging port and then remove using your hand.

Step 7 — Vibration Motor



- ⓘ The vibration motor is the circular metallic piece located at the bottom right of the phone.
- Using the plastic spudger, pry up the vibration motor starting at the top right. The motor is held down with adhesive, so some force may be required.

To reassemble your device, follow these instructions in reverse order.

This document was generated on 2020-11-28 07:28:16 AM (MST).

