

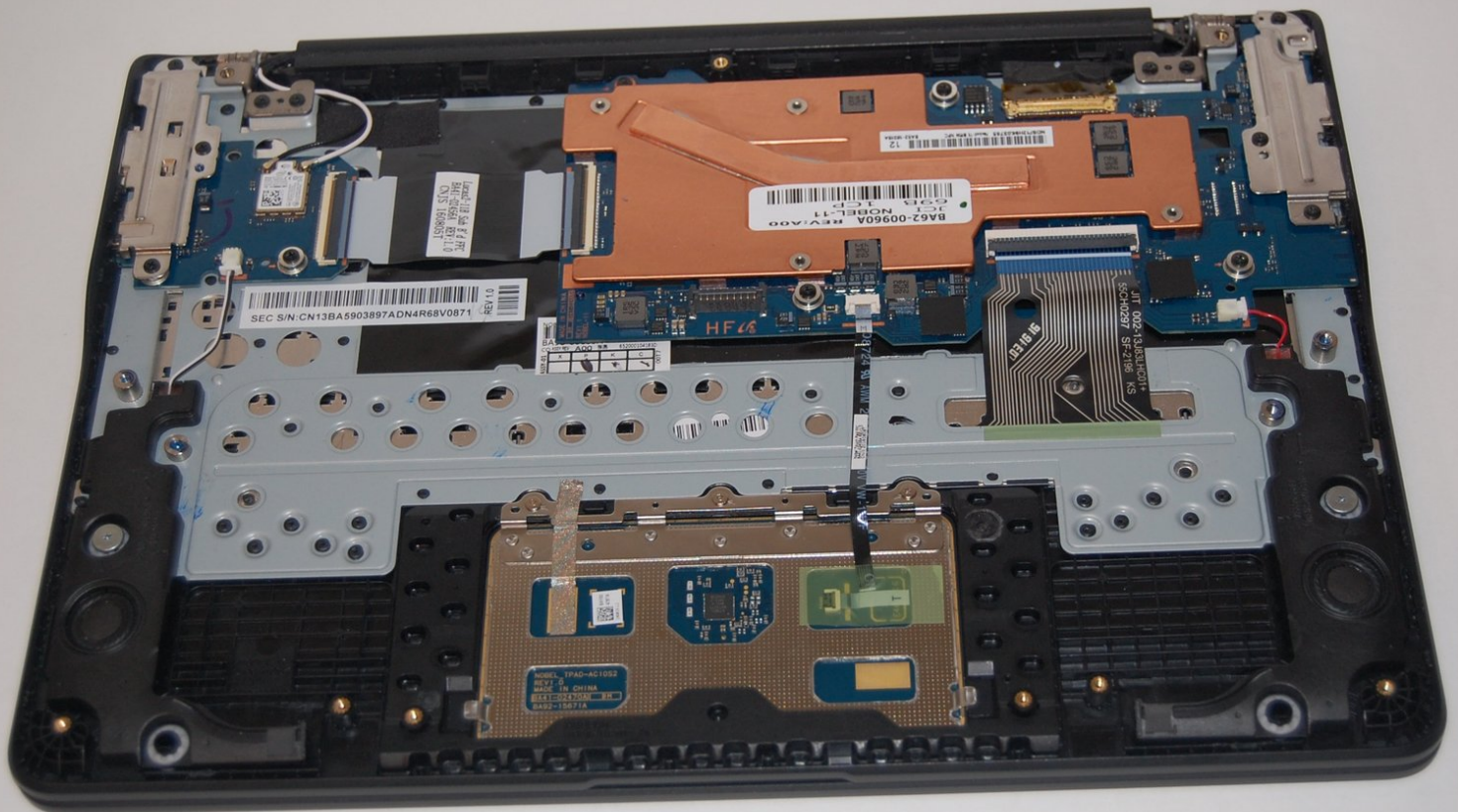


Samsung Chromebook 3 XE500C13-K02US

Motherboard Replacement

This guide illustrates the process to replace the Samsung Chromebook 3 XE500C13-K02US motherboard.

Written By: Mick McCarty



INTRODUCTION

This guide is a step-by-step guide of how to replace the Samsung Chromebook 3 XE500C13-K02US laptop motherboard.



TOOLS:

- [iFixit Opening Tools](#) (1)
 - [Phillips #00 Screwdriver](#) (1)
 - [Spudger](#) (1)
-

Step 1 — Bottom Case



- Place the laptop back cover facing up to expose the screws.
- Using a Phillips #00 screwdriver, remove nine 4.6mm screws from the back casing.

Step 2



- Use an iFixit opening tool to wedge in between the case and body of the laptop.
 - Once the tool is wedged in between the case and laptop, slide it around the entire laptop's edge to disengage the retaining clips.
- i** You should hear a popping sound as you slide the iFixit opening tool around the laptop.

Step 3



- Remove the cover exposing the inside of the laptop.

Step 4 — Battery



- Remove the four 4.6mm screws with the Phillips #00 screwdriver.

Step 5



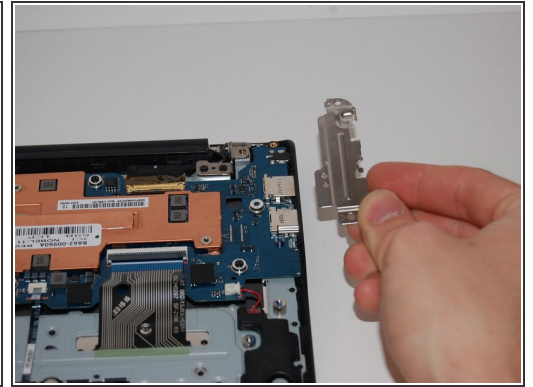
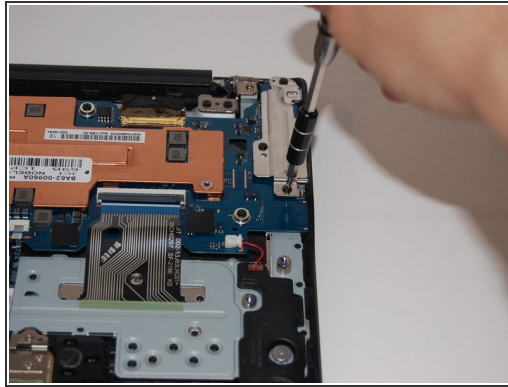
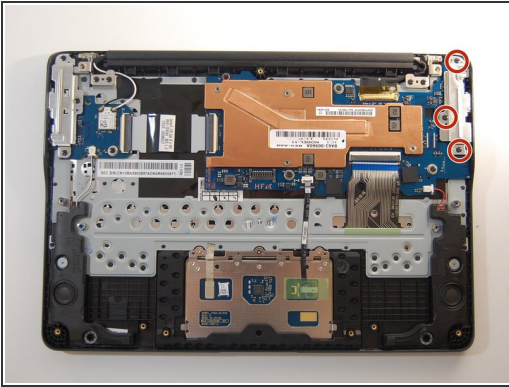
- Use the spudger to pry underneath the cable and gently lift the connector up.

Step 6



- Lift the battery up and out of the case.

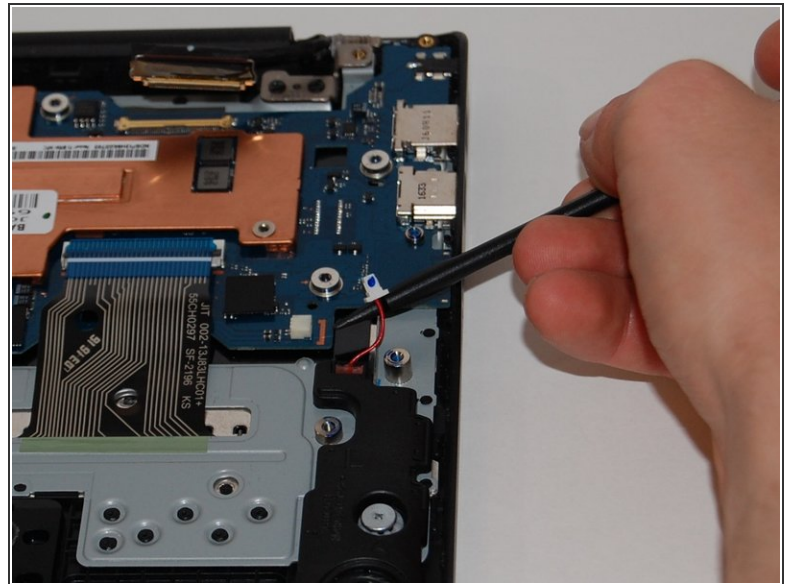
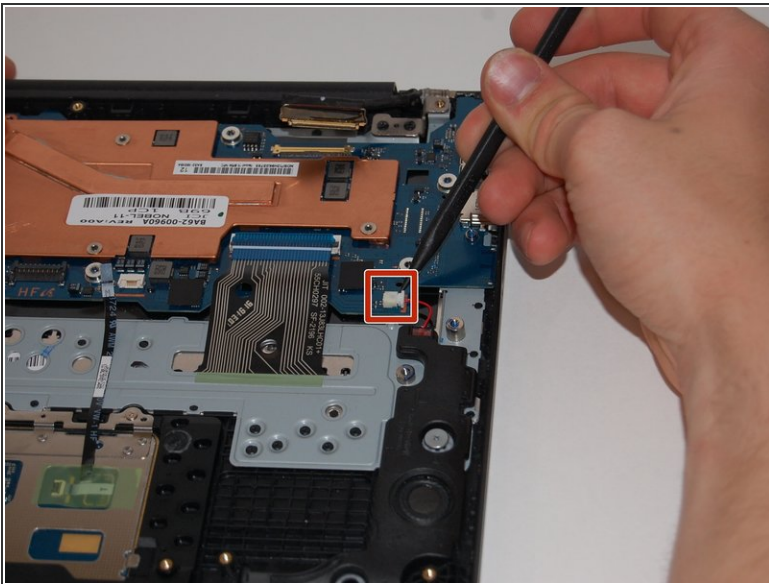
Step 7 — Motherboard



- Remove the three 4.6mm screws from the silver port cover using a Phillips #00 screwdriver.

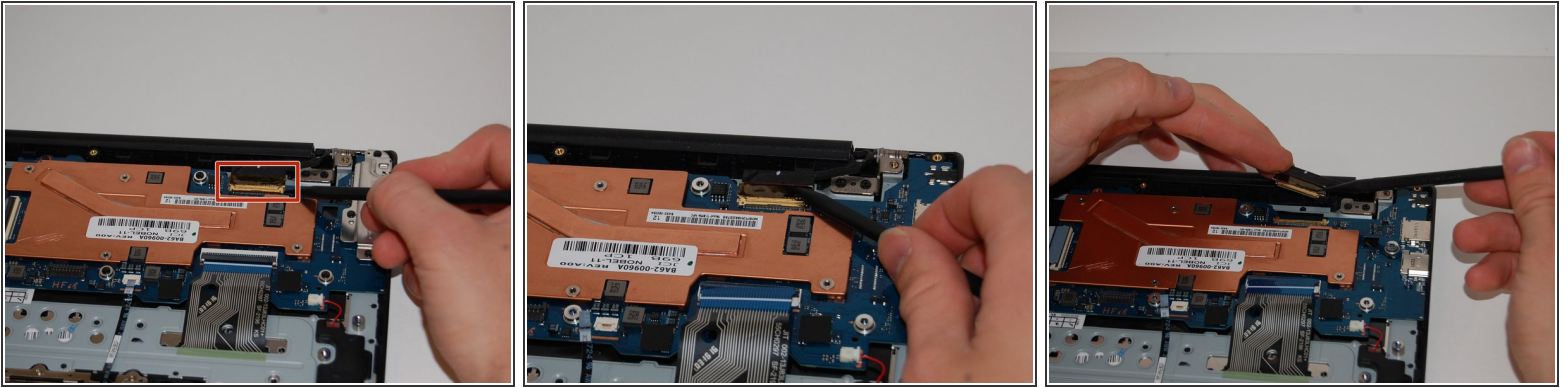
 The port cover will take a little wiggling to lift up and out of the laptop.

Step 8



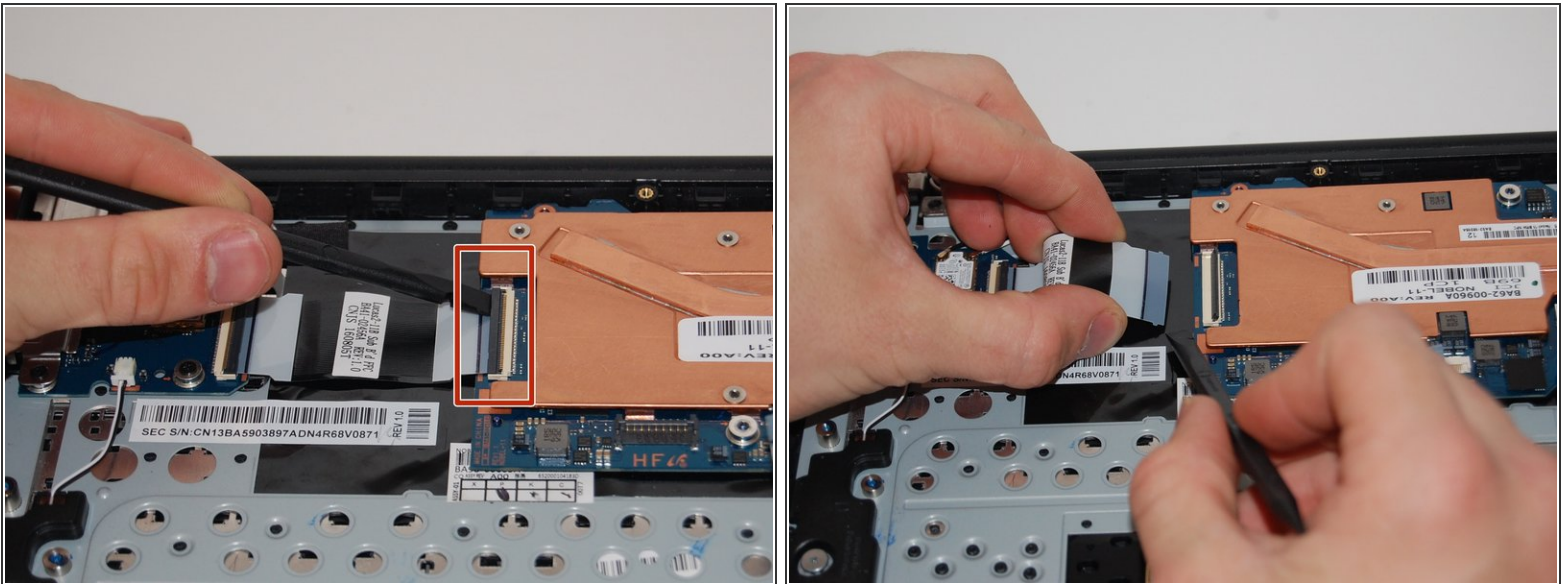
- Remove the right speaker connector using a spudger.

Step 9



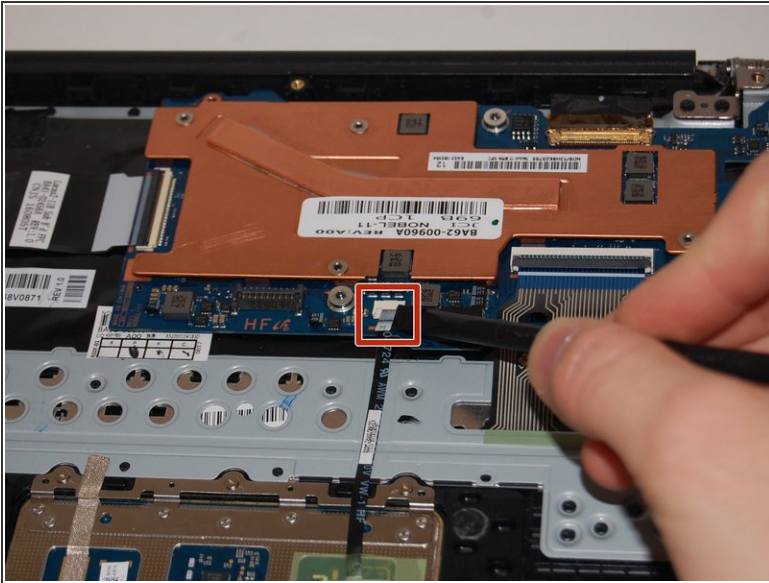
- Use a spudger to lift the hinge locking the gold colored display cable in place.
- Slide the hinge out to remove it from the motherboard.

Step 10



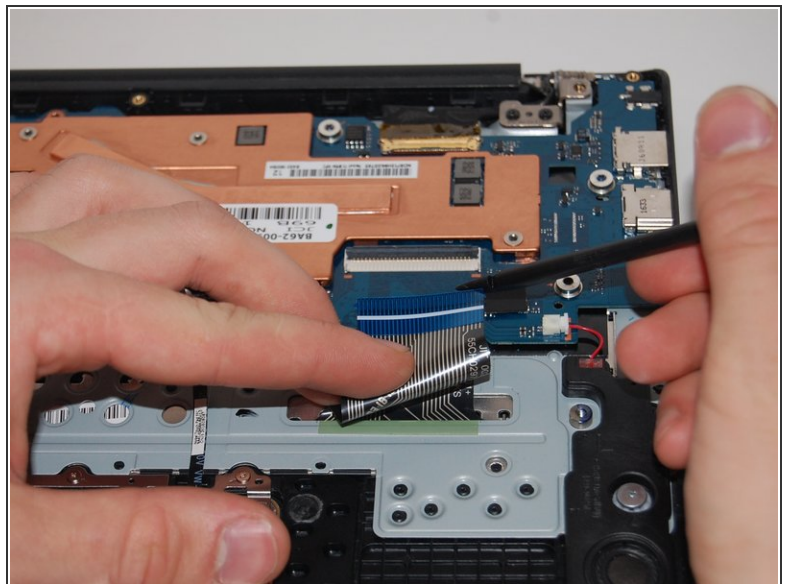
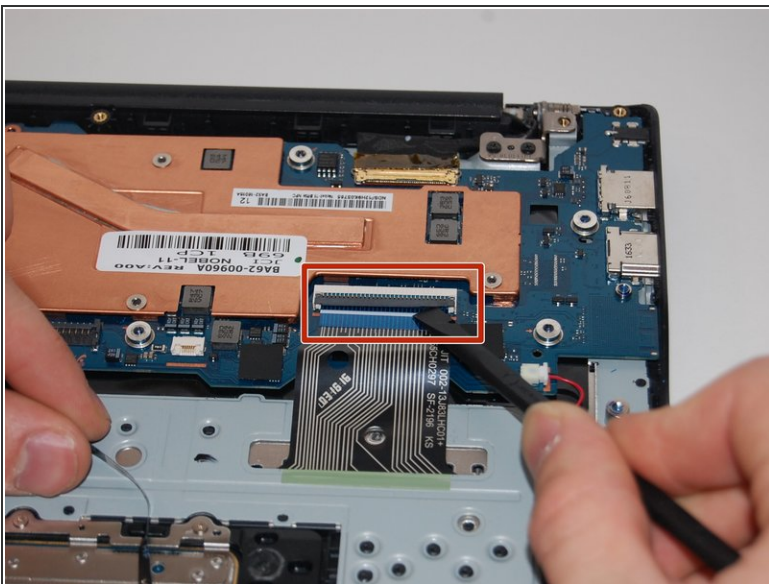
- Use a spudger to flip up the ZIF connector holding in the ribbon cable.
- Once the ZIF connector has been lifted, slide the ribbon cable out of the motherboard.

Step 11



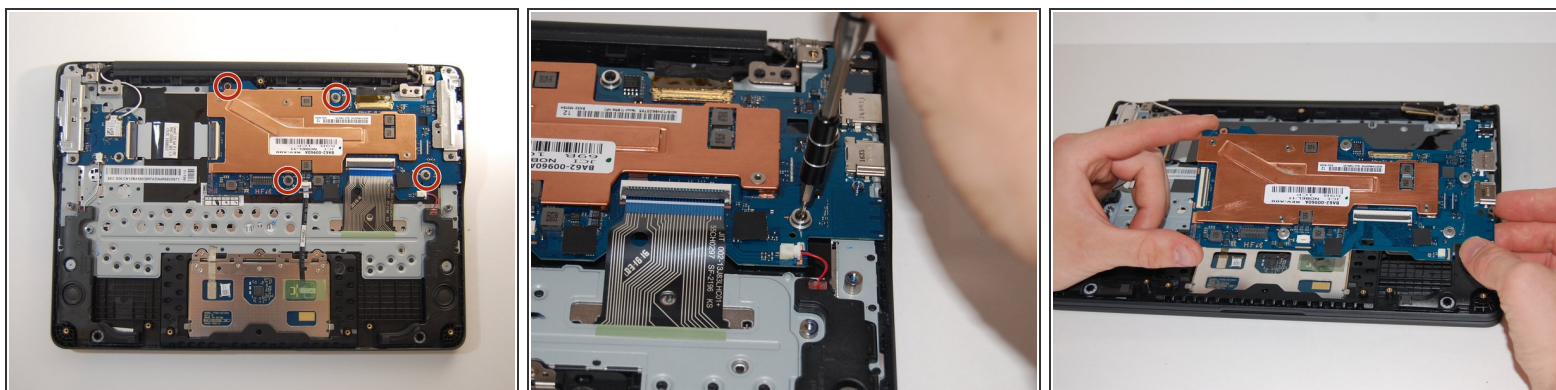
- Slide the track pad ribbon cable out from the motherboard using a spudger.

Step 12



- Lift the ZIF connector on the keyboard ribbon cable with a spudger.
- Once the ZIF connector has been flipped, slide the ribbon cable out from the motherboard.

Step 13



- Use your Phillips #00 screwdriver to remove four 4.6mm screws from the motherboard.
- Ensure there are no cables in the way and lift the motherboard up and out of the laptop.

To reassemble your device, follow these instructions in reverse order.