

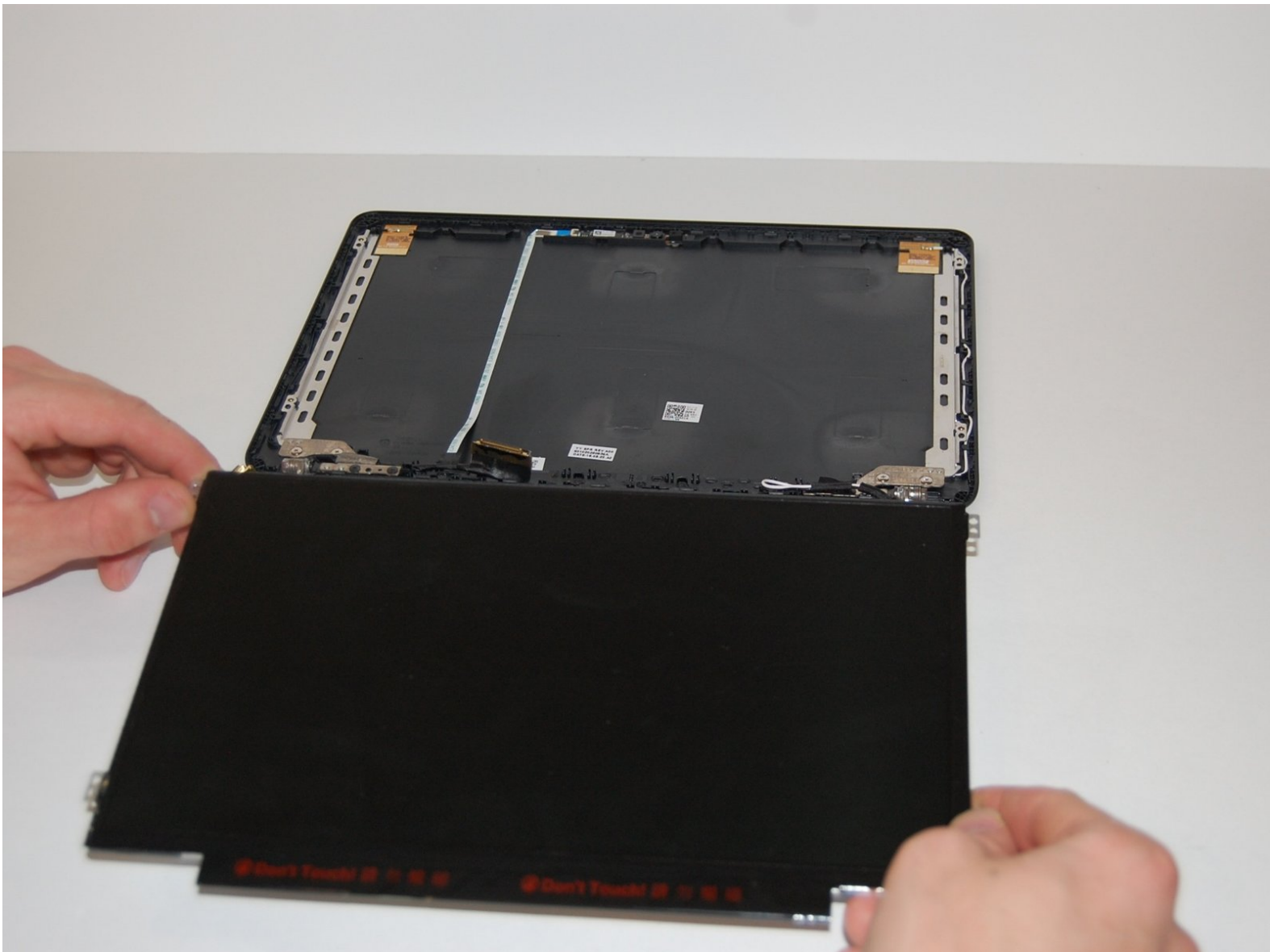


Samsung Chromebook 3 XE500C13-K02US

Display Screen Replacement

This guide will illustrate the replacement of the Samsung Chromebook 3 XE500C13-K02US display screen.

Written By: Mick McCarty



INTRODUCTION

This guide will illustrate a step by step process to replace the display on the Samsung Chromebook 3 XE500C13-K02US. You will need to remove the bottom case and battery prior to replacing the display.



TOOLS:

- [iFixit Opening Tools](#) (1)
- [Phillips #00 Screwdriver](#) (1)
- [Spudger](#) (1)



PARTS:

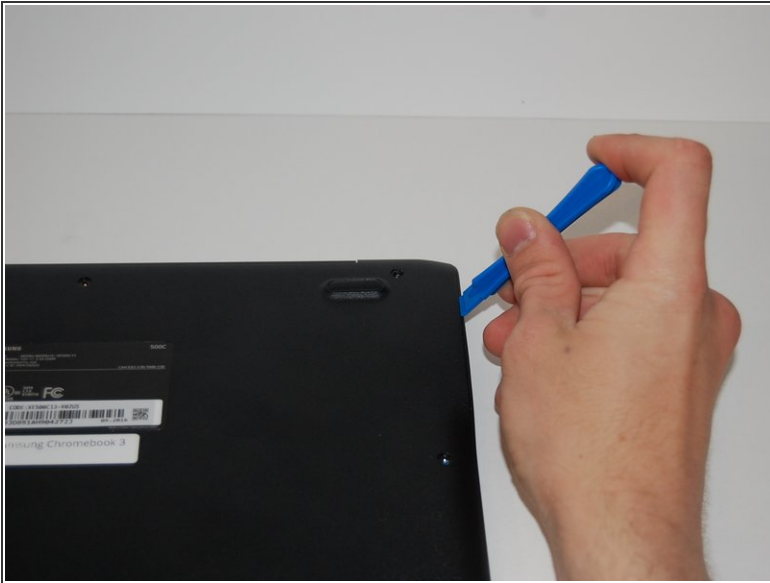
- [11.6" Chromebook LCD N116BGE-EA2REV.C1](#) (1)

Step 1 — Bottom Case



- Place the laptop back cover facing up to expose the screws.
- Using a Phillips #00 screwdriver, remove nine 4.6mm screws from the back casing.

Step 2



- Use an iFixit opening tool to wedge in between the case and body of the laptop.
- Once the tool is wedged in between the case and laptop, slide it around the entire laptop's edge to disengage the retaining clips.
- ⓘ You should hear a popping sound as you slide the iFixit opening tool around the laptop.

Step 3



- Remove the cover exposing the inside of the laptop.

Step 4 — Battery



- Remove the four 4.6mm screws with the Phillips #00 screwdriver.

Step 5



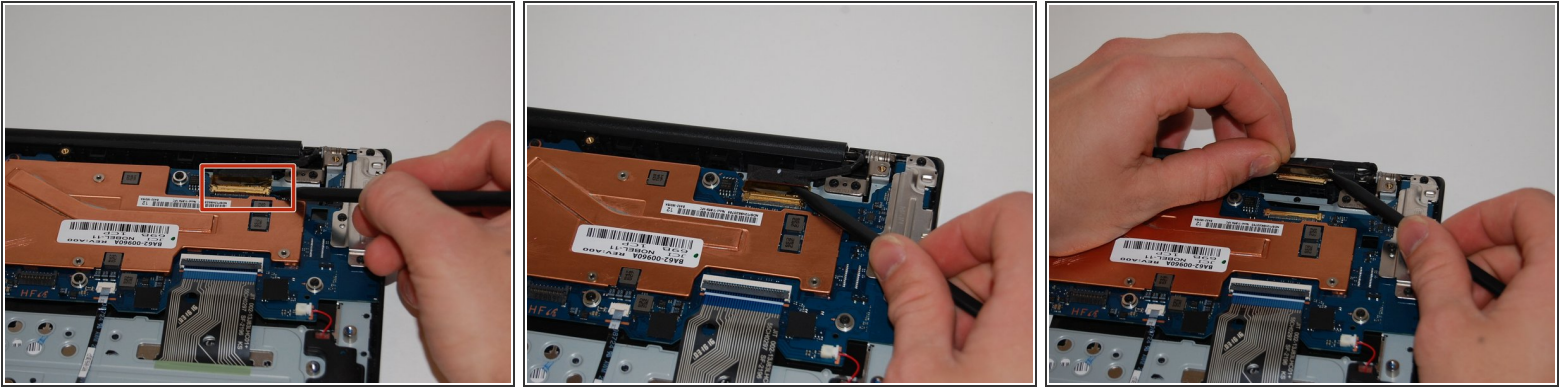
- Use the spudger to pry underneath the cable and gently lift the connector up.

Step 6



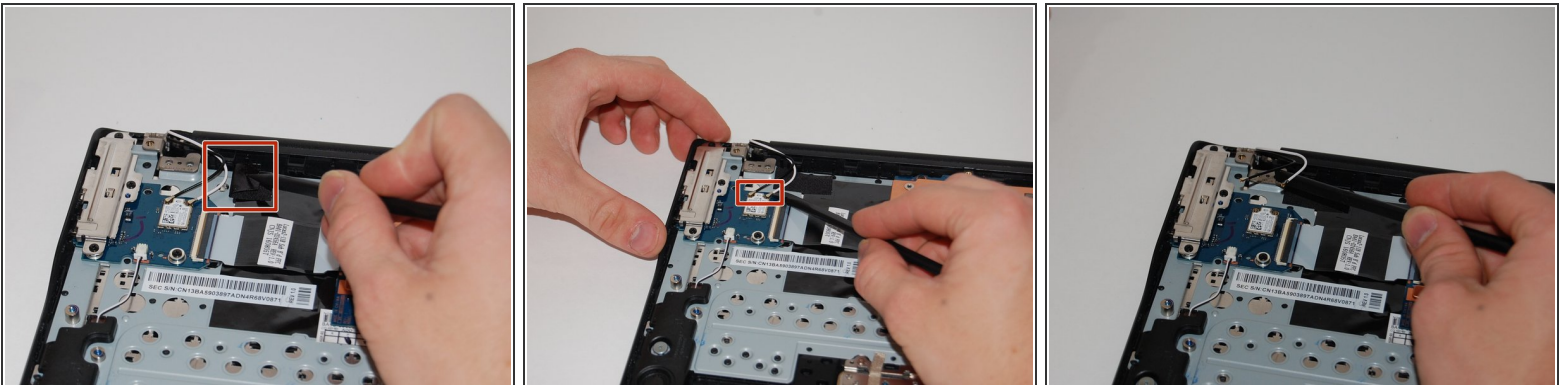
- Lift the battery up and out of the case.

Step 7 — Display Screen



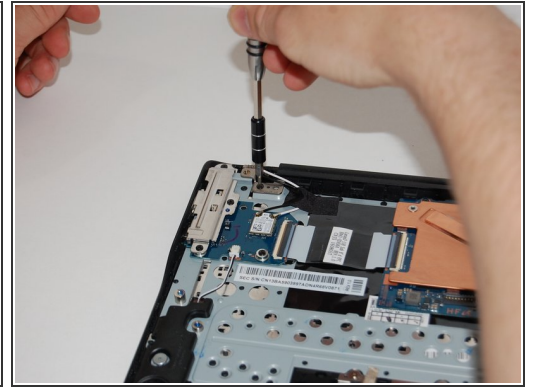
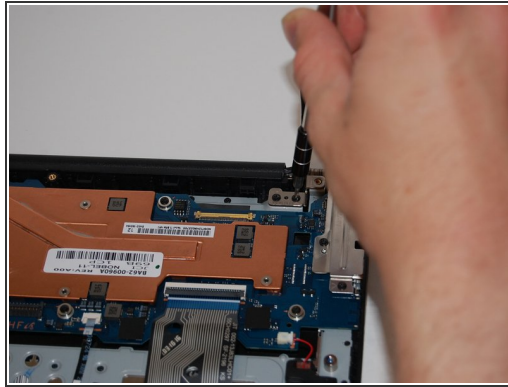
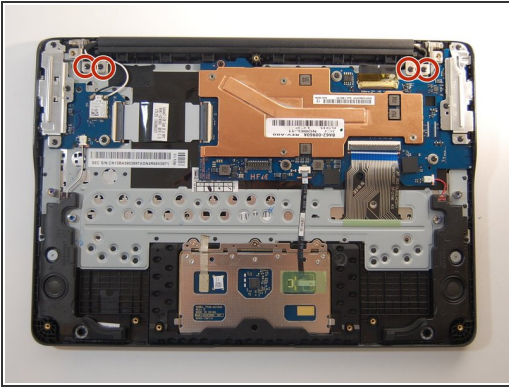
- Use the spudger to lift the hinge locking the gold colored display cable in place.
- Slide the cable out to remove it from the motherboard.

Step 8



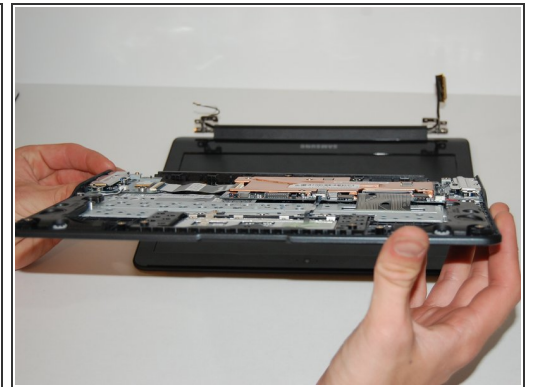
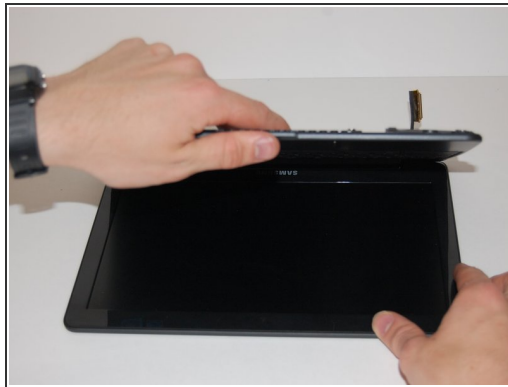
- Using the spudger, lift the adhesive securing the wireless card antenna wires.
- Lift the white and black antenna wires with the spudger.

Step 9



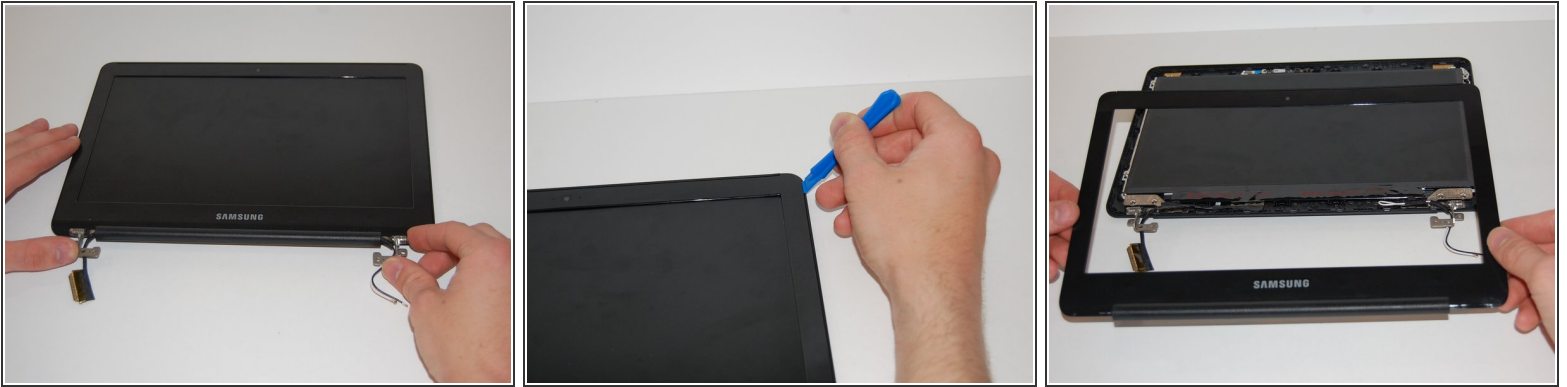
- Remove the four 4.6mm screws from the display mounts using a Phillips #00 screwdriver.

Step 10



- Once the hinge screws have been removed, open the laptop.
- ⓘ The laptop bottom will separate from the screen once you open it a certain amount.

Step 11



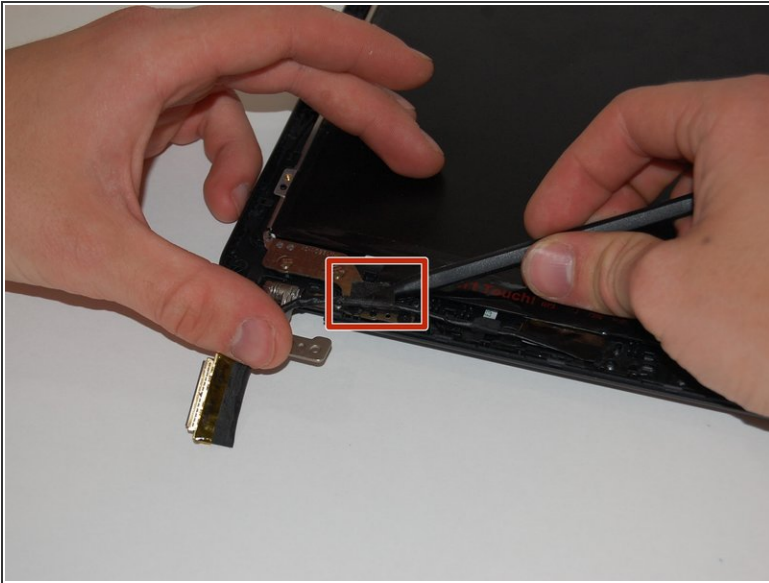
- Use the iFixit opening tool to pry in between the bezel and screen.
- ⓘ You will hear a snapping sound as you work your way around the bezel with the iFixit opening tool.

Step 12



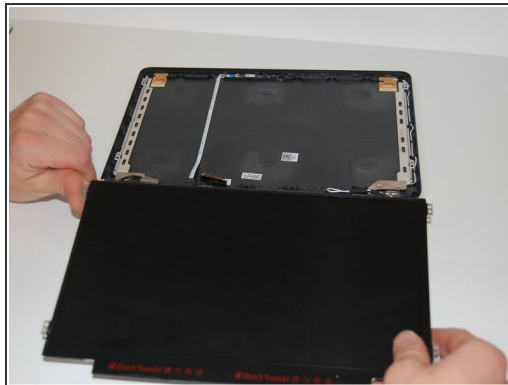
- Remove the four 4.6mm screws from the display mounts using a Phillips #00 screwdriver.

Step 13



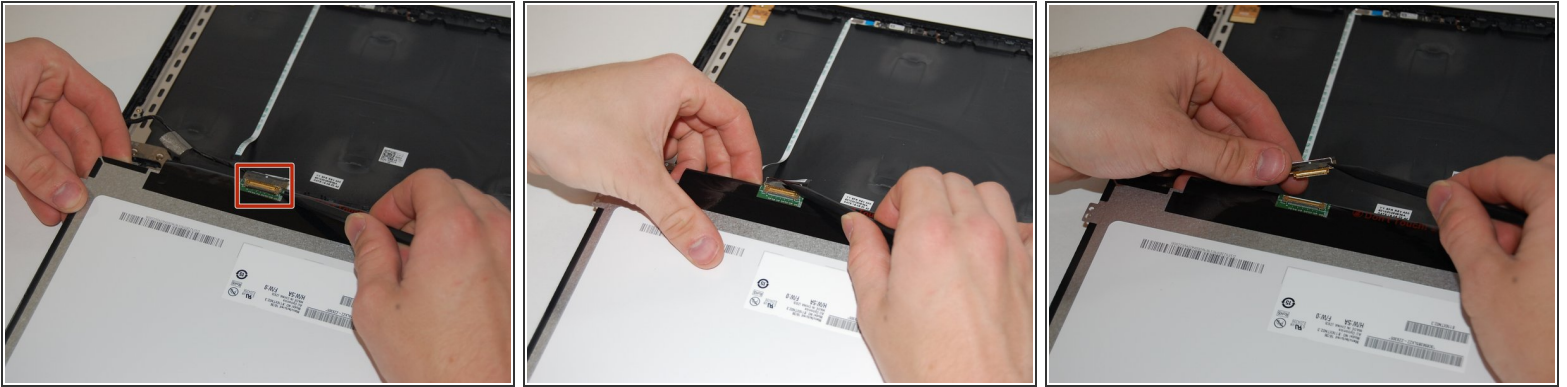
- Using the spudger, lift the adhesive tape holding the display cable.

Step 14



- Gently lift the panel up and fold it over to expose the display cable on the backside of the display.

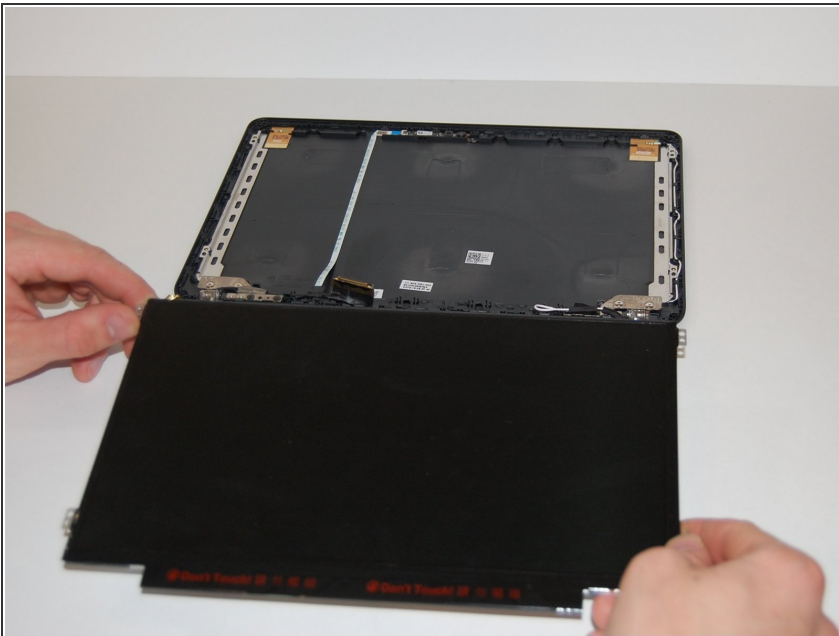
Step 15



- Use the spudger, lift the hinge locking the gold colored display cable in place.
- Pull the cable away from you to slide it out of the monitor.

⚠ Be gentle around the display circuit board. It is labeled "Do not touch."

Step 16



- Once the display cable has been removed, lift the screen up and out of the case.

To reassemble your device, follow these instructions in reverse order.