



LG Stylo 2 Plus Front Camera Replacement

This guide will serve as instructions on removing and replacing the front camera of the LG Stylo 2 Plus.

Written By: Joshua Sisson



INTRODUCTION

If you need to replace the front facing camera of your LG Stylo 2 Plus, follow this guide. When the phone is unable to capture photographs due to damage a replacement will be necessary. This an intermediate task that will involve handling small, delicate parts of the device (e.g. ribbon cable).



TOOLS:

- [JIS #000 Screwdriver](#) (1)
 - [Metal Spudger](#) (1)
 - [Spudger](#) (1)
 - [Tweezers](#) (1)
-

Step 1 — Rear Case



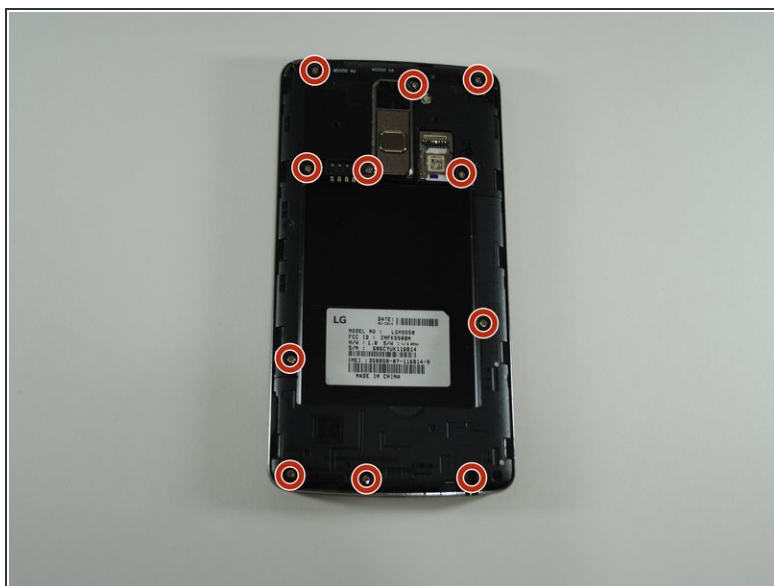
- To remove the rear case of the phone, insert the spudger into the opening on the back of the case.
- With the spudger parallel to the frame of the phone, slide it along the edge, forcing the casing to pop off.

Step 2 — Battery



- To remove the battery, insert your fingernail or the flat end of the spudger into the dimple at the bottom of the battery and lift upwards.
- Firmly grasp the battery and remove from the phone.

Step 3 — Mid-Frame



- Using the JIS #000 screwdriver, remove the eleven 4mm screws around the mid-frame.

Step 4



- Insert the metal spudger in the dimple at the base of the cover.
- Pry upward, removing the mid-frame from the phone.

Step 5 — Front Camera



- Using a pair of tweezers, carefully detach the ribbon cable connecting the camera to the motherboard.
- Still using the tweezers, firmly pull up to remove the camera from the phone.

To reassemble your device, follow these instructions in reverse order.