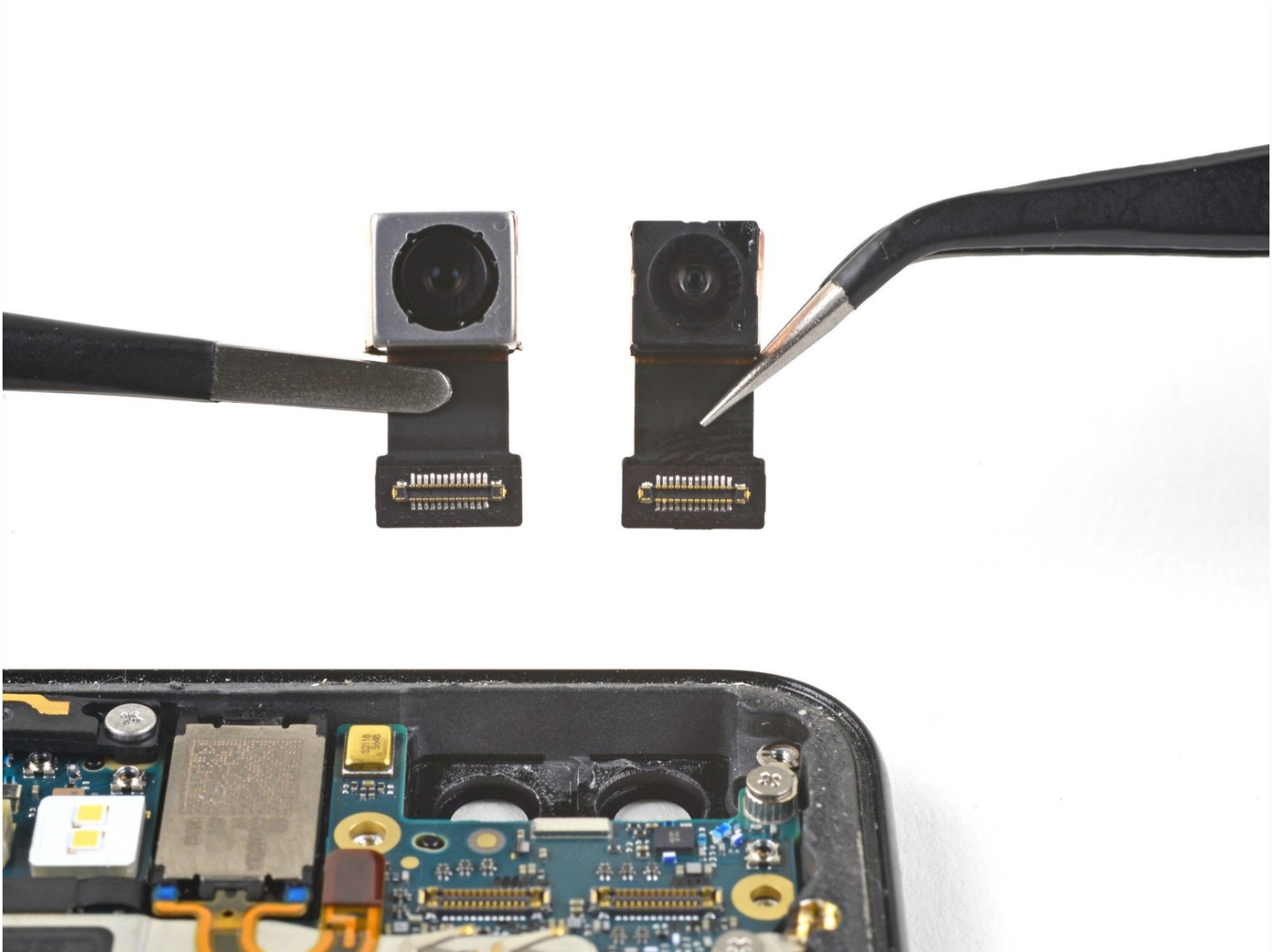




# Google Pixel 3 Front-Facing Cameras Replacement

This repair guide was authored by the iFixit...

Written By: Arthur Shi



# INTRODUCTION

This repair guide was authored by the iFixit staff and hasn't been endorsed by Google. Learn more about our repair guides [here](#).

Follow this guide to remove and replace the front-facing selfie cameras for the Pixel 3. The cameras are modular and can be individually replaced.

**When looking at the display, the wide-angle camera is on the left, while the normal angle camera is on the right.**

This guide is also part of the [motherboard removal guide](#) and contains references related to motherboard removal.

---

## TOOLS:

[iOpener](#) (1)  
[Suction Handle](#) (1)  
[iFixit Opening Picks \(Set of 6\)](#) (1)  
[Isopropyl Alcohol](#) (1)  
[Phillips #00 Screwdriver](#) (1)  
[Tweezers](#) (1)  
[Spudger](#) (1)  
[Standoff Screwdriver for iPhones](#) (1)

## PARTS:

[Tesa 61395 Tape](#) (1)

---

## Step 1 — Weaken the back cover's adhesive



- [Heat an iOpener](#) and apply it to the bottom of the phone for one minute.

## Step 2 — Create a gap in the seam



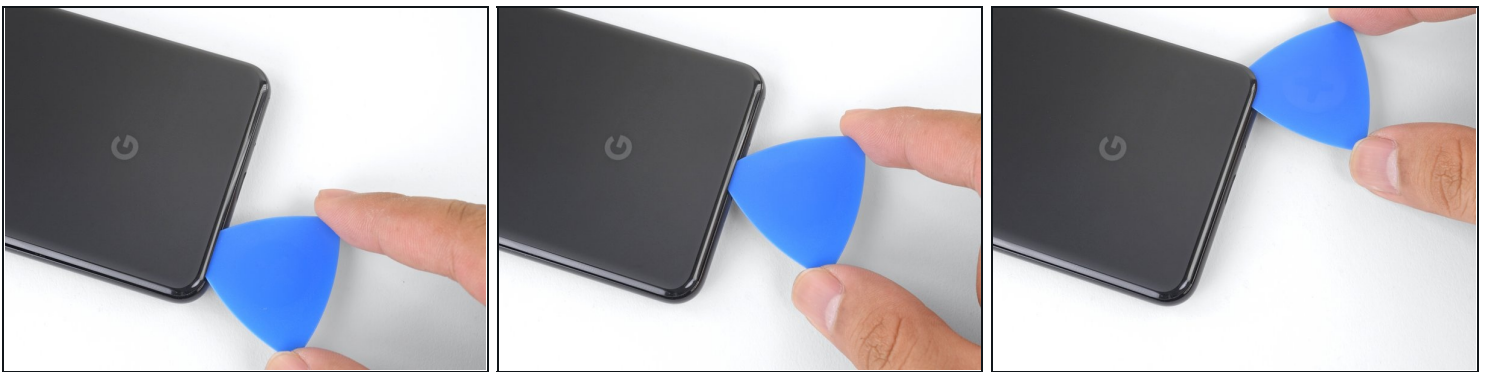
- Apply a suction cup to the heated bottom edge of the back cover.
  - ⚠ Make sure you did not mistake the screen side for the back cover side.
- ① If your back cover is badly cracked, covering it with a layer of clear packing tape may allow the suction cup to adhere.
- Lift on the suction cup with strong, steady force to create a gap.
  - ① Depending on how aged your phone is, this may take significant force. If you are having trouble, apply more heat and try again.
- Insert an opening pick into the gap.
  - ⚠ Don't use metal tools to pry, or you'll mar or shatter the glass back cover. If the panel won't budge, apply more heat, either with a hair dryer or heat gun.

### Step 3 — Fingerprint cable information



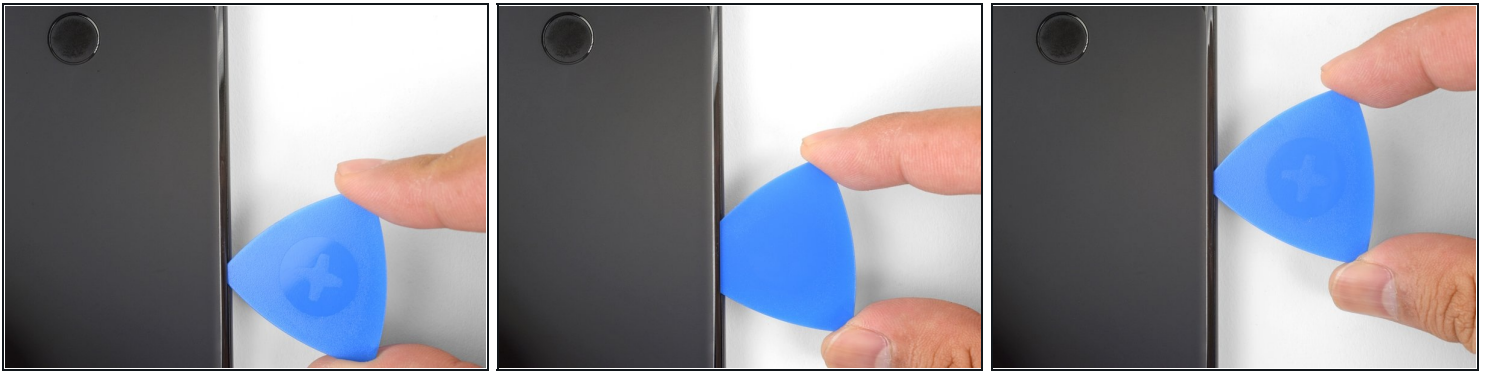
⚠ When inserting an opening pick above the power button, be careful not to insert the pick too deeply, or you will damage the fingerprint sensor cable.

### Step 4 — Cut through the adhesive



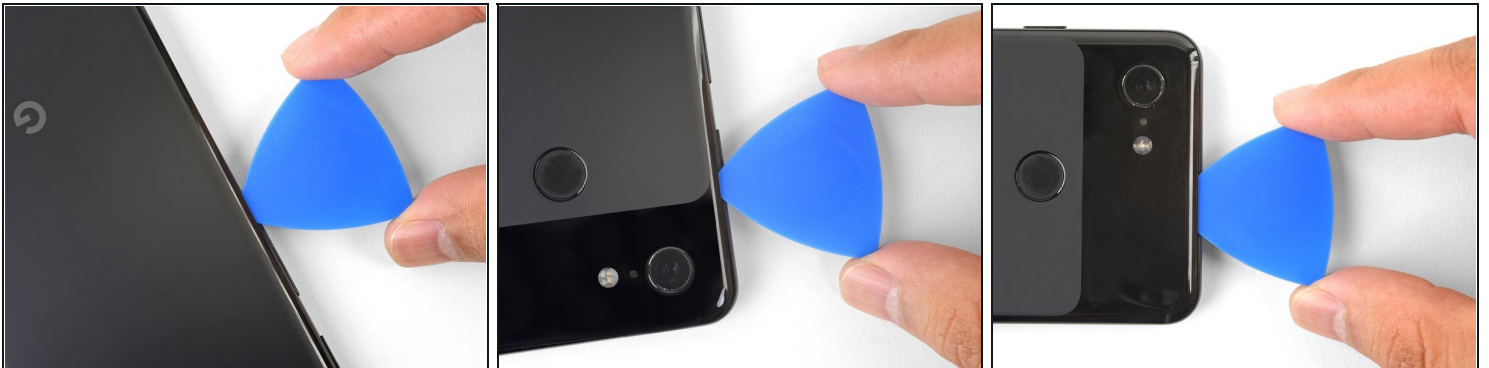
- Slice the adhesive along the bottom edge of the phone and around the right corner.
- Leave a pick in the bottom edge to prevent the adhesive from re-sealing.

## Step 5



- Heat the right edge with an iOpener and continue slicing the adhesive with an opening pick.
- ⓘ The adhesive can be very gummy. Push the pick in and out in a sawing motion to help with slicing.

## Step 6



- Continue heating and slicing through the rest of the phone perimeter. Leave a pick in each edge to prevent the adhesive from resealing.

⚠ When slicing above the power button, do not insert the pick more than halfway in to avoid damaging the fingerprint sensor cable.



## Step 7 — Lift the left edge of the back cover



- Once you have sliced around the perimeter of the phone, carefully lift the **left edge** of the back cover.

**⚠ Do not attempt to remove the back cover. It is still attached to the phone by the fingerprint sensor cable.**

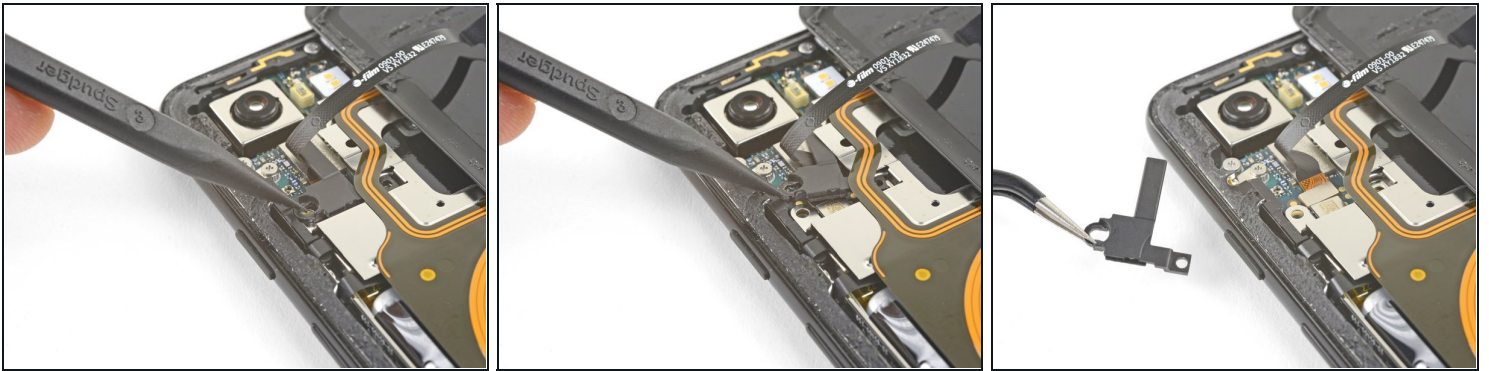
- Flip the back cover along its long axis and rest it so that the fingerprint sensor cable is not strained.

## Step 8 — Remove the screws



- Remove the two 4.1 mm-long Phillips screws securing the fingerprint connector bracket.
- ☑ Throughout this repair, [keep track of each screw](#) and make sure it goes back exactly where it came from.
- ☑ During reassembly, be careful not to over-tighten these screws, or you may damage your display.

## Step 9 — Remove the fingerprint connector bracket



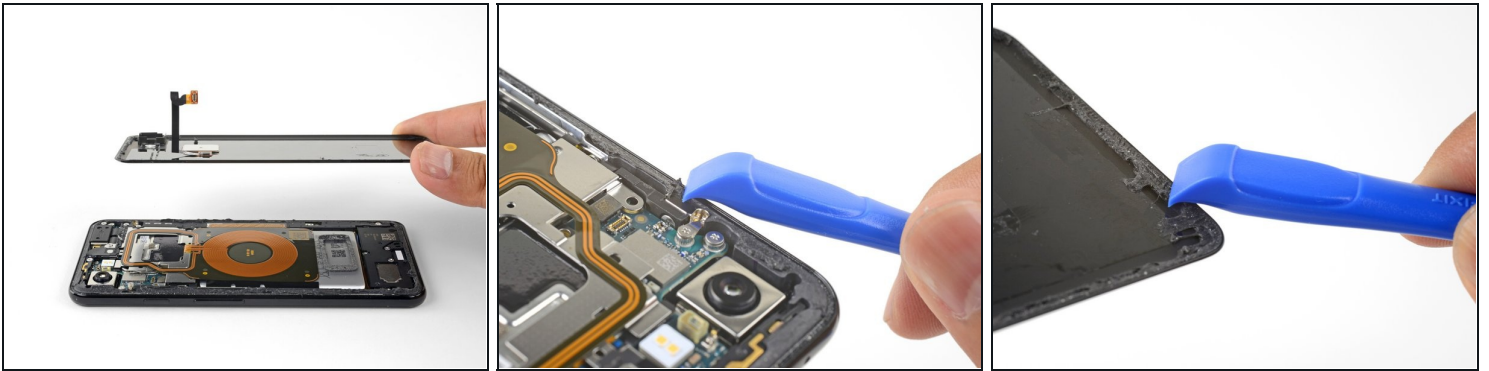
- Use the point of a spudger to slide the fingerprint connector bracket out from under the NFC coil.
- Remove the fingerprint connector bracket.

## Step 10 — Disconnect the fingerprint connector



- Use the point of a spudger to pry up and disconnect the fingerprint connector from its socket.
  - ⓘ When you disconnect connectors like these, be careful not to dislodge the small surface-mounted components surrounding the socket.
- ☑ To re-attach [press connectors](#) like this one, carefully align and press down on one side until it clicks into place, then repeat on the other side. Do not press down on the middle. If the connector is misaligned, the pins can bend, causing permanent damage.

## Step 11 — Remove the back cover



- Remove the back cover.
- ☑ Before you install a replacement back cover, be sure to remove all adhesive residue from the phone frame. Use an opening tool to scrape and high concentration isopropyl alcohol to clean the surface.
- ☑ If you are re-using the back cover, be sure to clean off any adhesive, and apply new back cover adhesive.
- ☑ If you are installing a replacement back cover, be sure to compare it with the original part. Transfer any remaining parts (such as the flash diffuser) over to your replacement part.
- ☑ Follow [this guide](#) to correctly apply new back cover adhesive.



## Step 12 — Remove the screws



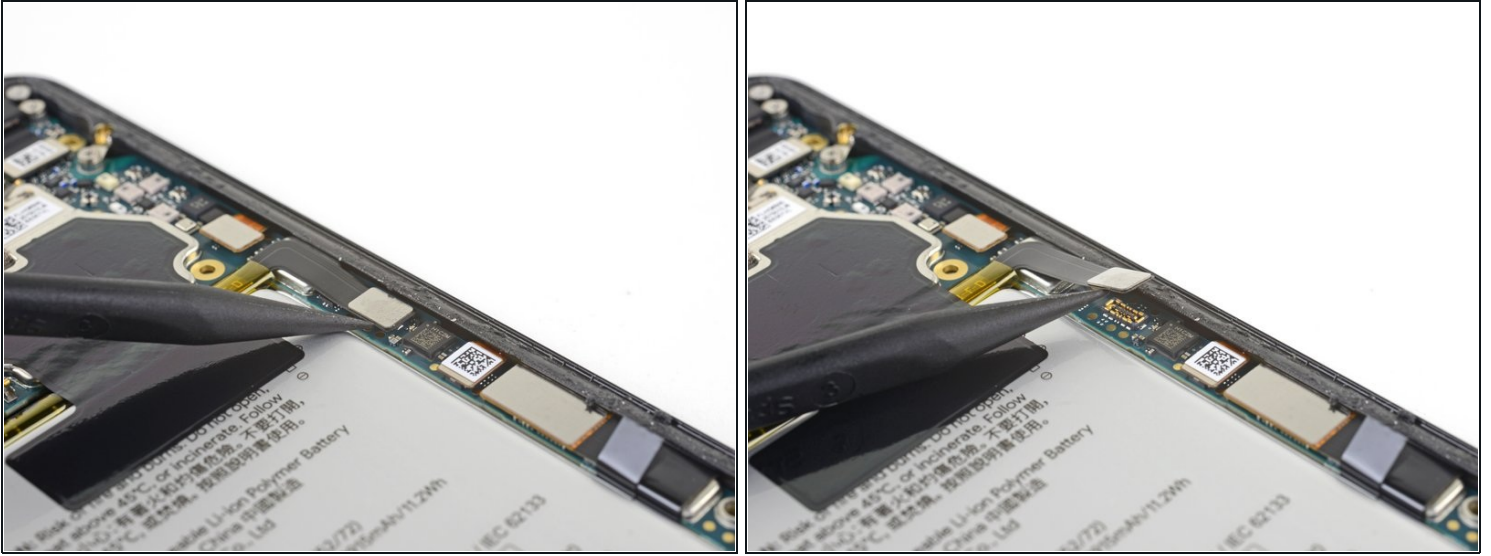
- Remove the five Phillips screws securing the wireless charging coil:
  - Two 1.9 mm screws
  - Two 4.2 mm screws
  - One 4.3 mm screw

## Step 13 — Remove the charging coil



- Lift up and remove the wireless charging coil.

## Step 14 — Disconnect the battery cable



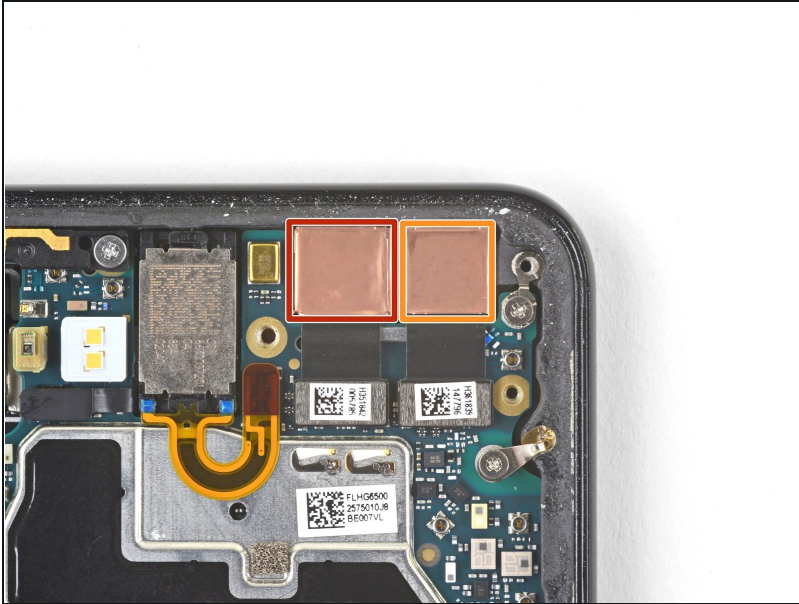
- Use the point of a spudger to pry up and disconnect the battery press connector from its socket near the right edge of the phone.

## Step 15 — Remove the screws



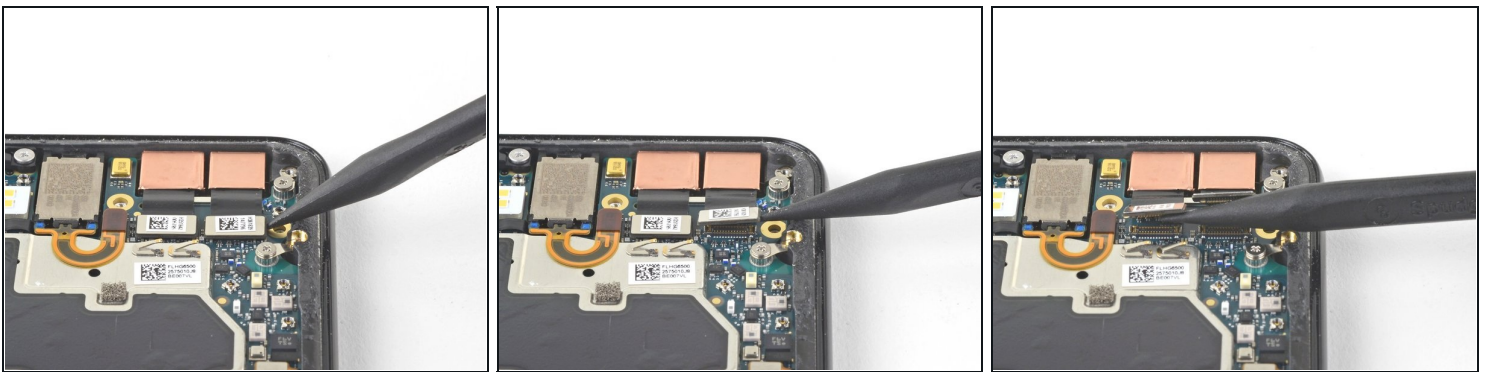
- Remove the two screws securing the camera bracket:
  - One 4.1 mm Phillips screw
  - One 4 mm standoff screw
- ① Standoff screws are best removed using a standoff bit. In a pinch, a small flathead screwdriver will do the job—but use extra caution to ensure it doesn't slip and damage surrounding components.
- Remove the camera bracket.

## Step 16 — Identify the cameras



- ❗ If you are replacing front-facing cameras, determine which one you need to replace:
  - Normal view camera
  - Wide-angle camera
- ❗ If you are doing the motherboard removal procedure, you will need to remove both cameras.

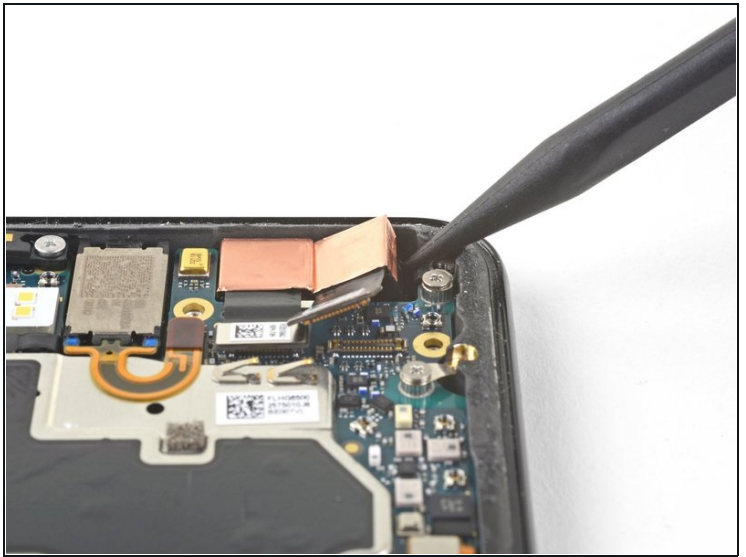
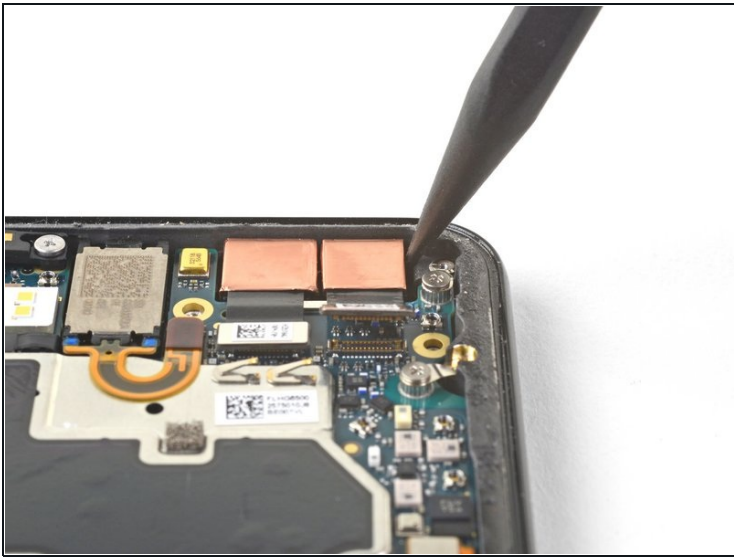
## Step 17 — Disconnect the camera(s)



- Use the point of a spudger to pry up and disconnect the connector for the camera(s) you are replacing.



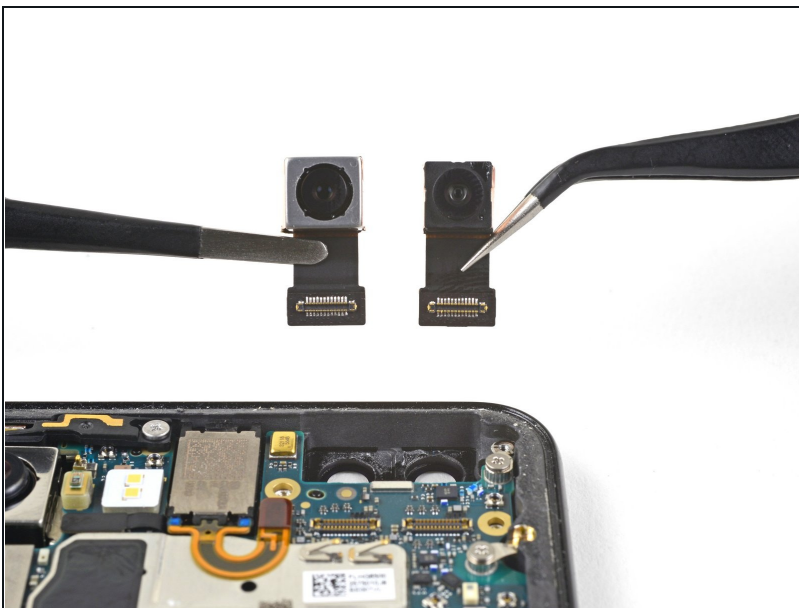
## Step 18 — Loosen the camera(s)



**i** The cameras are held in place with adhesive.

- Insert the point of a spudger behind the edge of the camera module and pry up to loosen it from the frame.

## Step 19 — Remove the camera(s)



- Use a pair of blunt nose tweezers to remove the camera(s).
- ★ If the adhesive holding the camera module is in good condition, you can re-use the adhesive. Otherwise, replace the adhesive with double-sided [Tesa tape](#).
- ★ When installing a replacement camera module, make sure that the phone frame lens are free of adhesive residue or debris.

---

To reassemble your device, follow these instructions in reverse order.

Repair didn't go as planned? Check out our [Google Pixel 3 Answers community](#) for troubleshooting help.