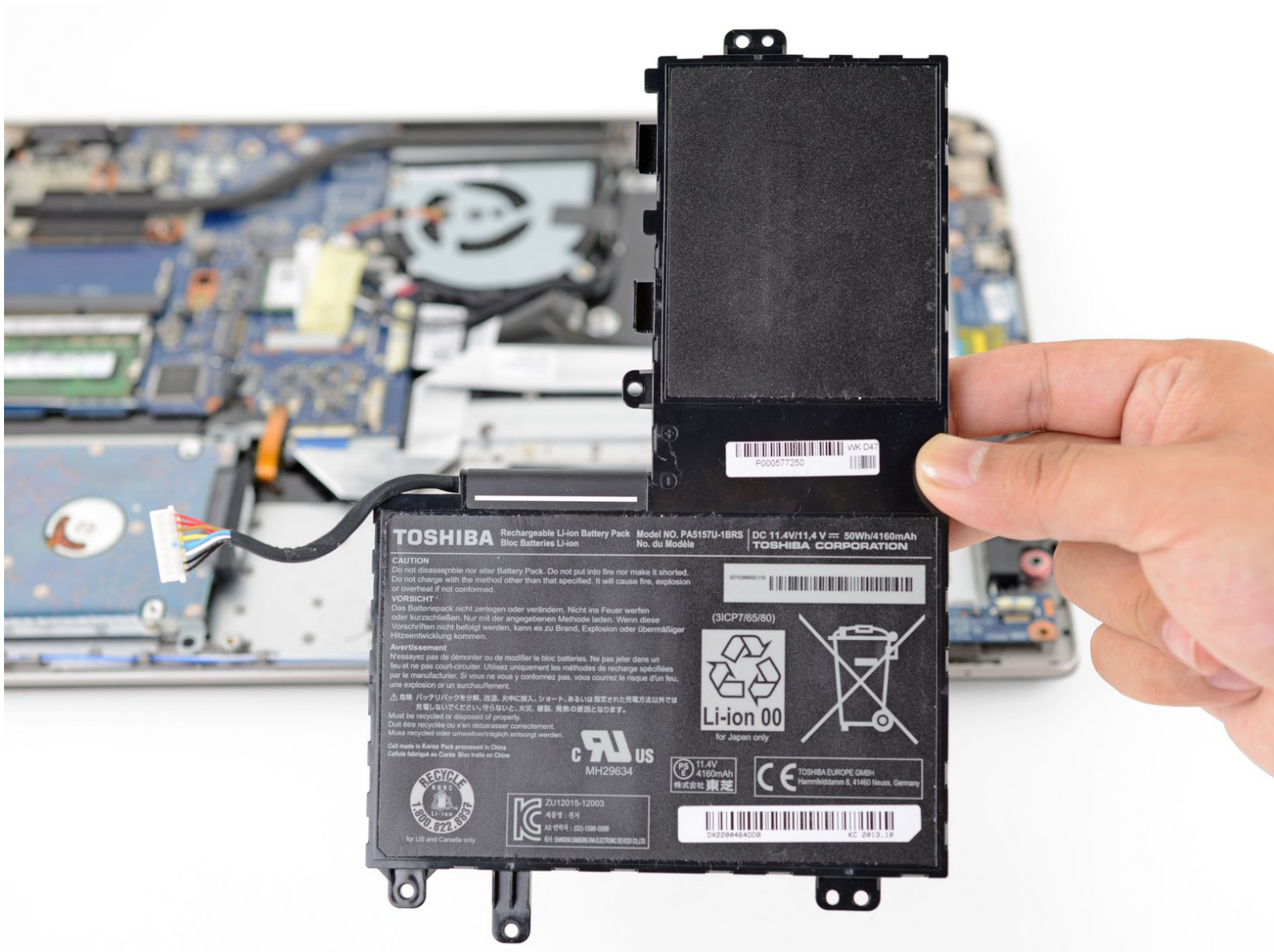




Toshiba Satellite E55t Battery Replacement

Follow this guide to remove and replace the...

Written By: Arthur Shi



INTRODUCTION

Follow this guide to remove and replace the worn out battery for the Toshiba E55t laptop. The battery is easy to access and requires minimal tools.



TOOLS:

- [Phillips #1 Screwdriver](#) (1)
- [iFixit Opening Picks \(Set of 6\)](#) (1)



PARTS:

- [Toshiba PA5157U-1BRS Laptop Battery](#) (1)


Step 1 — Battery



- ⓘ Before you begin, be sure to power off your laptop.
- Flip the laptop over so that the backside is facing up.
- Remove the twelve 7.8 mm long Phillips screws securing the back cover.

Step 2



 The back cover is still held in place by plastic clips.

- Use your fingers to pry the back cover up slightly near one of the display hinges.
- Insert a plastic opening pick into the gap created between the back cover and the laptop.
- Run the pick along the perimeter seam, twisting it as you go to release the clips holding the back cover.

Step 3



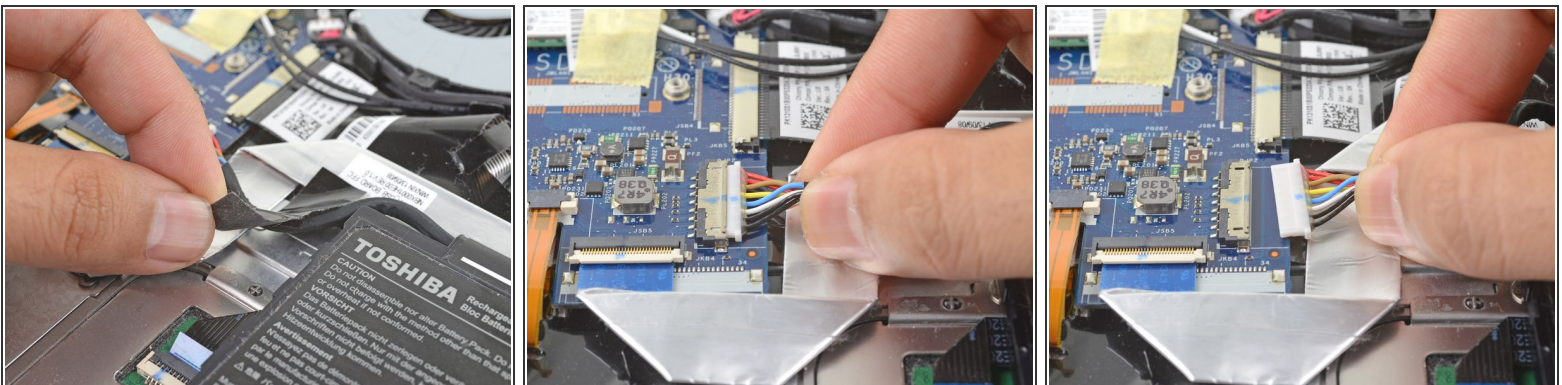
- Once all of the perimeter clips have been released, grasp the back cover by an edge.
- Slowly lift the back cover away, wiggling it slightly to help release any remaining clips.
- Remove the back cover.



To reinstall the back cover:

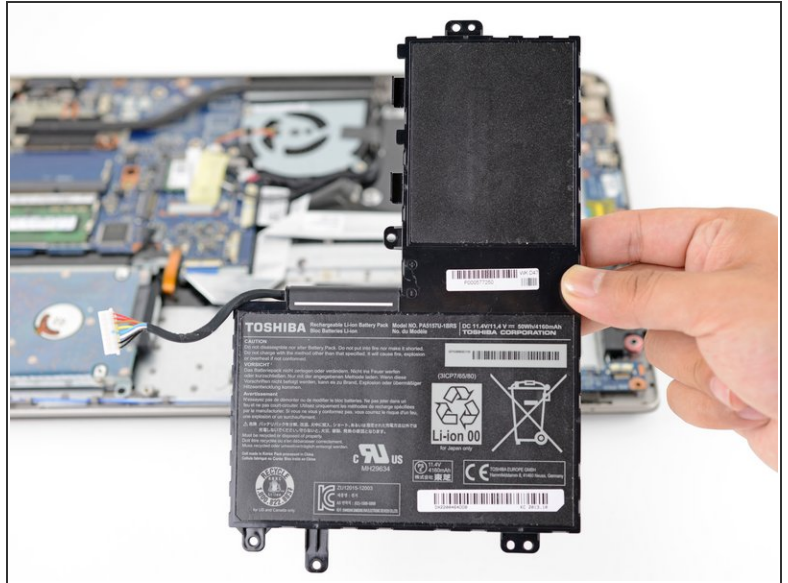
- Realign the cover onto the laptop and set the cover down in place.
- Squeeze the edges of the cover against the laptop and press near the center to click the clips back in place.

Step 4



- Peel and remove the black tape holding the battery cable in place.
 - Use your fingers to grasp the battery cable near the connector and carefully pull it out of its socket.
- ⚠ Do no pull the cable upwards. The connector slides out parallel to the motherboard.**

Step 5



- Remove the three 5.7 mm long Phillips screws securing the battery to the laptop.
- Remove the battery.

To reassemble your device, follow these instructions in reverse order.

For optimal performance, calibrate your newly installed battery: Charge it to 100% and keep charging it for at least 2 more hours. Then use your device until it shuts off due to low battery. Finally, charge it uninterrupted to 100%.

Take your e-waste to an [R2 or e-Stewards certified recycler](#).