



Toshiba Satellite L55-A RAM Module Replacement

Follow this guide to replace or add RAM modules to the Toshiba L55 laptop.

Written By: Arthur Shi



INTRODUCTION

This guide shows how to access the Toshiba L55's two RAM slots in order change or add RAM modules.



TOOLS:

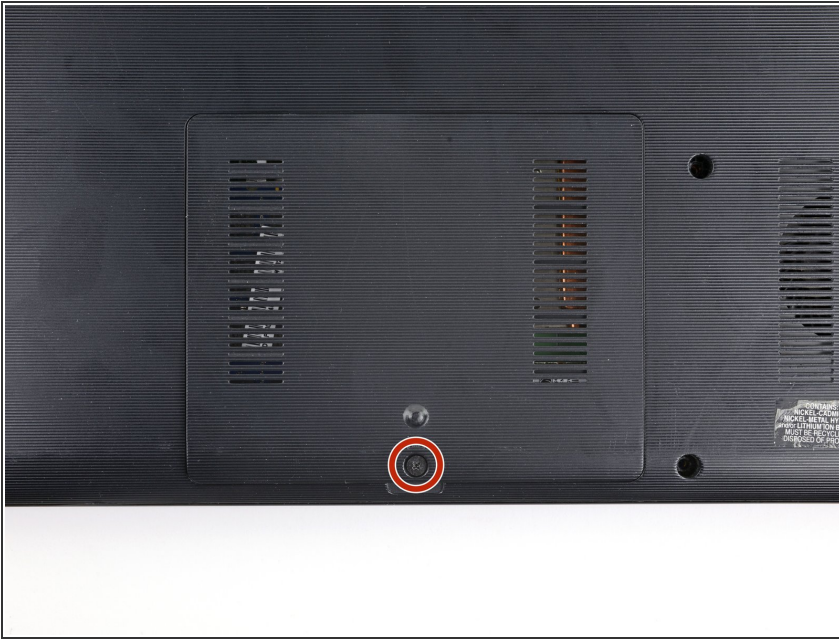
- [Phillips #1 Screwdriver](#) (1)



PARTS:

- [PC3L-12800 8 GB RAM Chip](#) (1)

Step 1 — Remove the RAM cover



- ❗ Before you begin, be sure to power down your laptop.
- Flip the laptop over so that the back cover is facing up.
- Unscrew the captive Phillips screw securing the RAM cover.

Step 2



- Lift up the edge of the RAM cover and remove it.

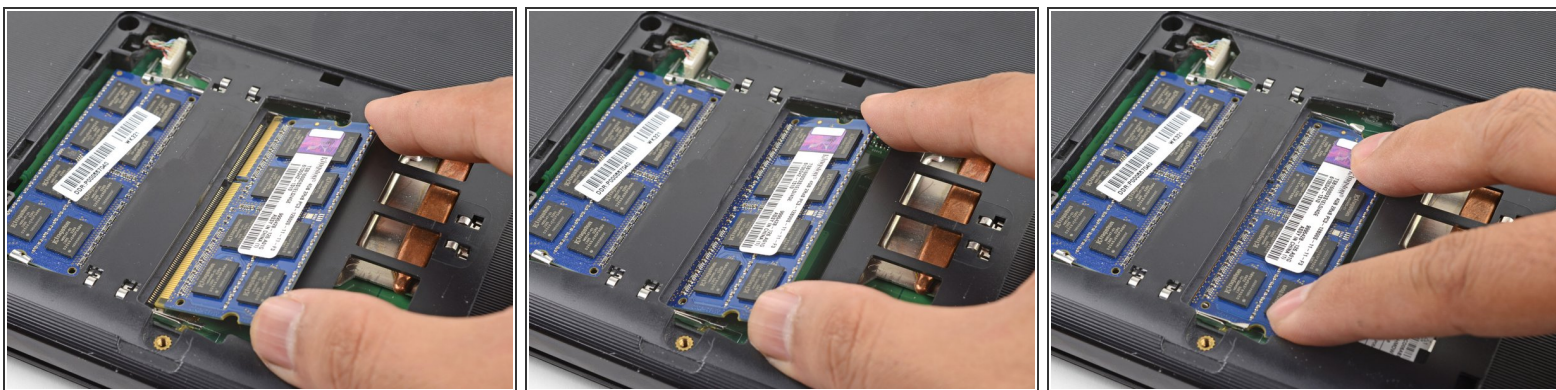
Step 3 — Remove the RAM module



i This step shows how to remove a RAM module.

- Use your fingers to spread the two metal clips securing the edge of the RAM module. This should free the module and cause it to pop up slightly.
- Pull the RAM module out of its slot and remove it.

Step 4 — Replace the RAM module



i This step shows how to insert a RAM module.

- Insert the replacement RAM at a shallow angle into the RAM slot until the gold contacts are fully socketed.
- Use your fingers to gently press the RAM module's edges down until both metal clips snap into place.
- i** If your laptop will not properly recognize the installed RAM, unseat and reseal the RAM, making sure that all modules are fully locked in place.

To reassemble your device, follow these instructions in reverse order.