



Toshiba Satellite L55-A CMOS Battery Replacement

Remove and replace the CMOS battery for the Toshiba L55 laptop.

Written By: Arthur Shi



INTRODUCTION

This guide shows how to remove and replace the CMOS battery for the Toshiba L55 laptop. The battery is a standard CR2032 lithium coin cell.



TOOLS:

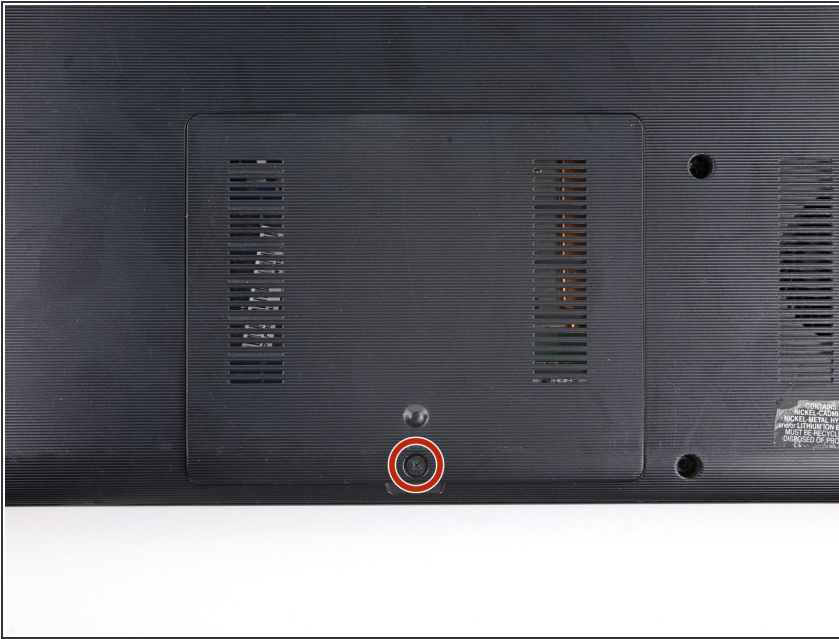
- [Phillips #1 Screwdriver](#) (1)
- [iFixit Opening Tools](#) (1)
- [iFixit Opening Picks set of 6](#) (1)



PARTS:

- [CR2032 Lithium Battery](#) (1)

Step 1 — Remove the RAM cover



- ❗ Before you begin, be sure to power down your laptop.
- Flip the laptop over so that the back cover is facing up.
- Unscrew the captive Phillips screw securing the RAM cover.

Step 2



- Lift up the edge of the RAM cover and remove it.

Step 3 — Disconnect the ethernet connector cable



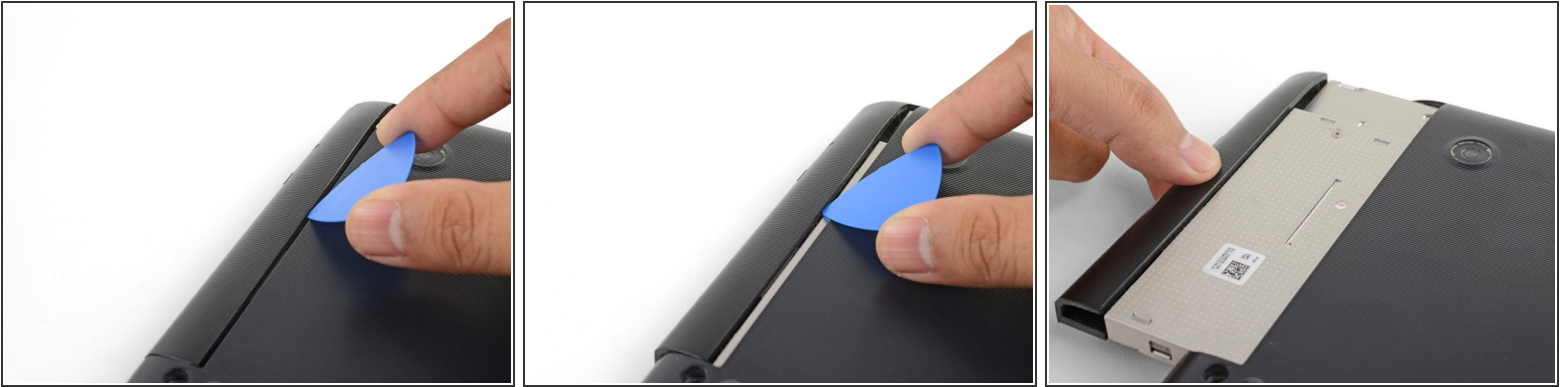
- Use an opening tool to pry up the ethernet connector cable from its socket near the RAM module.
 - Disconnect the cable.
- ☒ During reassembly, make sure you re-insert this connector right-side-up. The connector is keyed to plug in only one orientation, so if it doesn't slide into place easily, turn it around and try the other way.

Step 4 — Remove the back cover



- Remove the thirteen 6.8 mm long Phillips screws securing the back cover.

Step 5



- Insert the point of an opening pick in the seam between the SuperMultiDrive and the rest of the back cover.
- Push the SuperMultiDrive's lip away from the back cover to disconnect the drive.
- Slide the drive out of the bay and remove it from the laptop.

Step 6



i The back cover is still held in place by plastic clips.

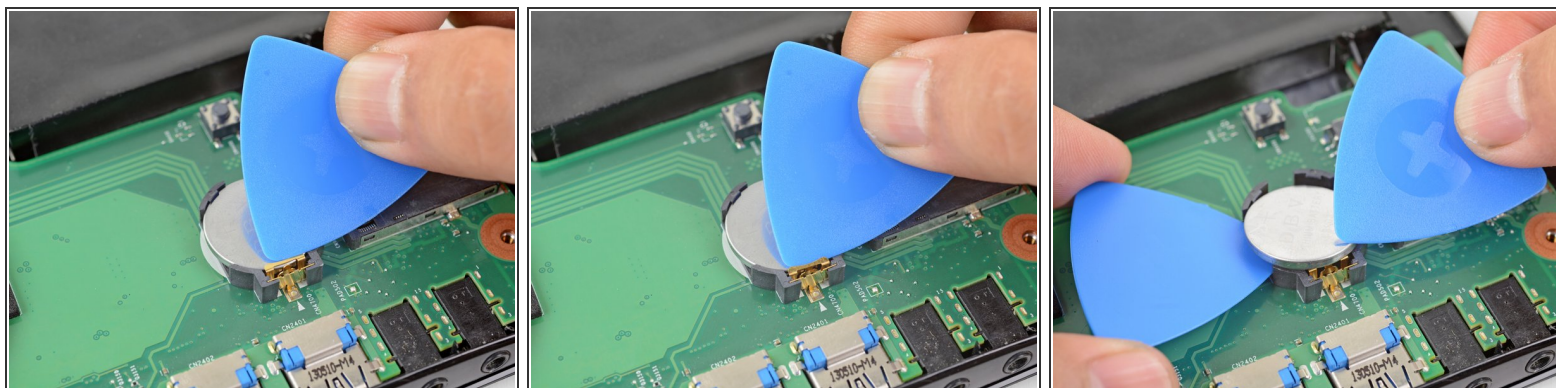
- Insert the point of an opening pick into the back cover seam near the ethernet port.
- Twist the pick to release the plastic clips along the edge.

Step 7



- Grasp the loosened back case edge with your hand and lift it slowly away from the laptop. The remaining clips should release with ease.
 - ❗ If you meet significant resistance, **stop** and check for forgotten screws.
 - Remove the back cover.
- ☑ To reinstall the back cover, align the cover and press along the edges to snap the clips back in place.

Step 8 — Remove the coin cell



- Use your fingernail or an opening pick to push the gold metal clip off of the top of the coin cell.
 - Pry the coin cell out of its holder and remove it.
- ☑ To install a replacement battery, align the battery and press it firmly into the holder until the battery snaps into position.

To reassemble your device, follow these instructions in reverse order.

Take your e-waste to an [R2 or e-Stewards certified recycler](#).