



# Battery Disconnection

Prereq-only guide for disconnecting the battery.

Written By: Jeff Suovanen



# INTRODUCTION

Prereq-only guide for disconnecting the battery.

---

## TOOLS:

- [T5 Torx Screwdriver](#) (1)
  - [Phillips #0 Screwdriver](#) (1)
  - [iFixit Opening Tool](#) (1)
  - [iFixit Opening Picks \(Set of 6\)](#) (1)
  - [Spudger](#) (1)
-

## Step 1 — Back Cover



- Remove the eight 4 mm T5 Torx screws from the bottom cover.

## Step 2



- Use a plastic opening tool to pry open the 'XPS' flap in the middle.



## Step 3



- Remove the single Phillips screw hidden beneath the flap.

## Step 4



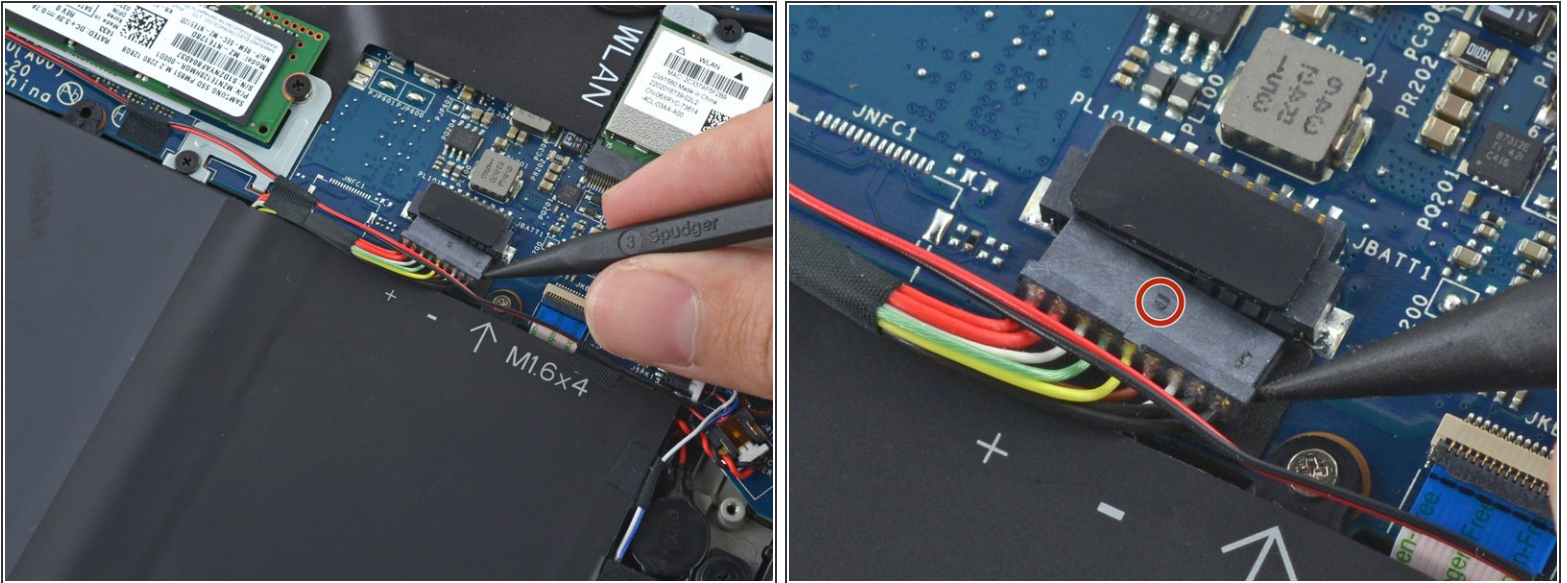
- Use opening picks or a plastic pry tool to pry open the case clips, beginning from the back edge.

## Step 5



- Remove the bottom cover.

## Step 6 — Battery Disconnection



- Pull the battery cable connector towards the battery to disconnect it from its socket.
  - If the connector is stubborn, push a little at one side, then the other, to "walk" it out of its socket.
  - If you have trouble walking the connector out of the socket, use the point of a spudger to gently push on the connector indent to slide the connector out.

**⚠ Do not pull up.**

- Open the display and press the power button for five seconds to drain any remaining charge from the system.

To reassemble your device, follow these instructions in reverse order.