



Mercedes W123 Door Sill Disassembly

Written By: Carlos

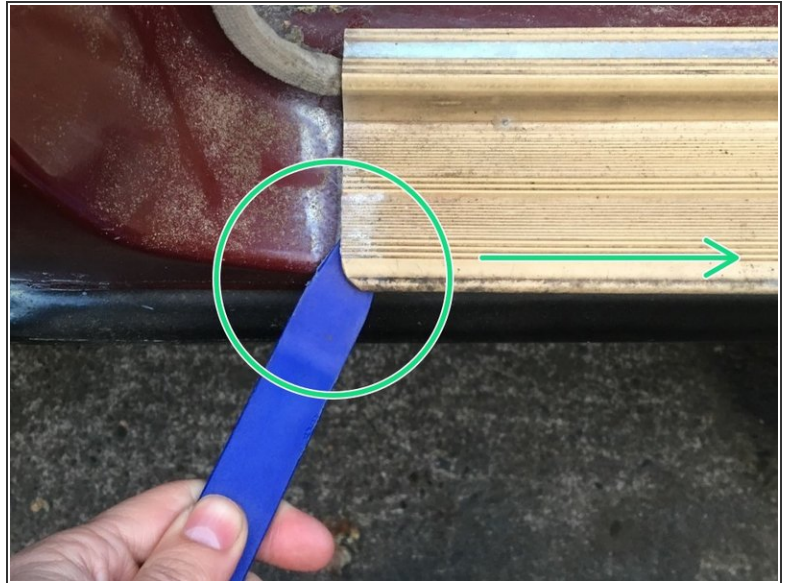


INTRODUCTION

How to remove the plastic steps from the baseboards of doors in an easy way

Door Sill remove

Step 1 — Sills or trims can



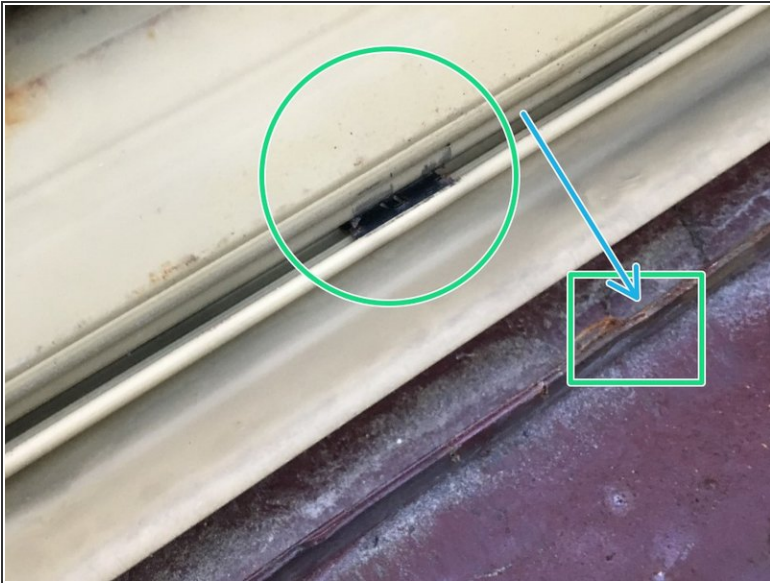
- The steps are the same for the 4 doors and the pieces are under pressure. Likewise, time can cause them to get stuck, you must proceed with care.
- First we will have to open the door, and locate one of the corners, in which a plastic tool is inserted, with which we will travel the length of the piece to release it, this without forcing the piece.

Step 2



- Once the previous step is done, introduce a second plastic tool (it can be a screwdriver covered with tape) on the inside of the piece, it must be inserted as close to the center of it, this is the side where we will exert leverage to release the piece. of its fit.
- Firmly exert force, but without violence, making sure the piece does not flex too much, remember that it is old plastic. If necessary, pry both tools, making sure they are as far inside as possible.
- You can use your hands once you have managed to lift one of the sides.

Step 3



- This is the bottom side of the piece, it is simply embedded on the metal edge of the pressure door, and to place them simply position and press

To reassemble your device, follow these instructions in reverse order.