



HP 17t-k000 Series Display Panel Replacement

Repair the screen on an HP Envy 17t-k000 series laptop by replacing the display panel.

Written By: Nicholas Dukeman



INTRODUCTION

Use this guide to replace the display panel inside an HP Envy 17t-k000 series laptop.

A broken screen severely hinders the usefulness of a laptop. The symptoms of display damage range from a few nonfunctional pixels to visible cracks or even deformation in the display. This series of HP laptops features a display panel located behind a plastic or glass sheet. If the display damage is localized to the display panel, then replacing this part should restore the screen to working order.

As with all guides that involve disassembling a computer, it is recommended to first backup all important data stored on the laptop if possible. Additionally, since the sensitive internal electronics will be exposed during the repair, be sure to take the necessary [Electrostatic Discharge precautions](#).

Although this guide should be applicable to the entire 17t-k000 family of HP laptops, note that your laptop may differ from the exact model pictured in the steps.



TOOLS:

- [Spudger](#) (1)
 - [Phillips #0 Screwdriver](#) (1)
 - [Phillips #00 Screwdriver](#) (1)
-

Step 1 — Display Panel



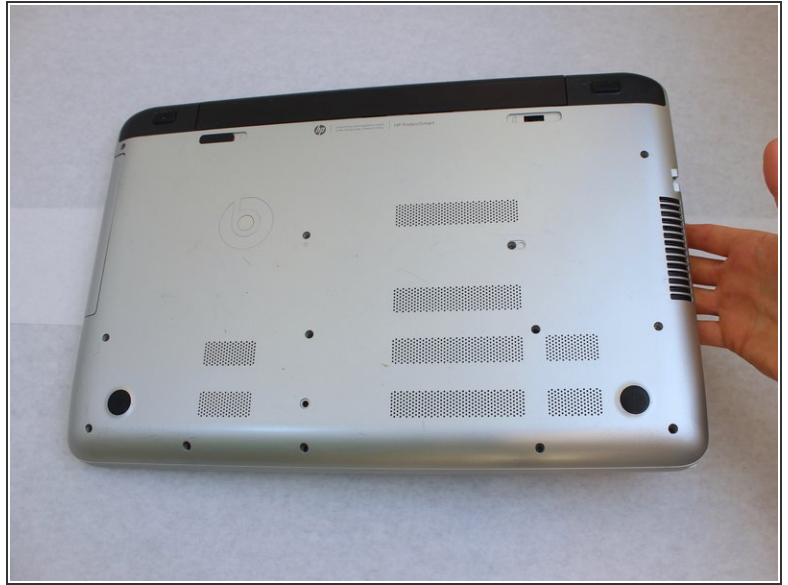
- If the screen is cracked or otherwise severely damaged, apply painter's tape (or a light adhesive tape) over the screen to protect yourself and the laptop.

Step 2



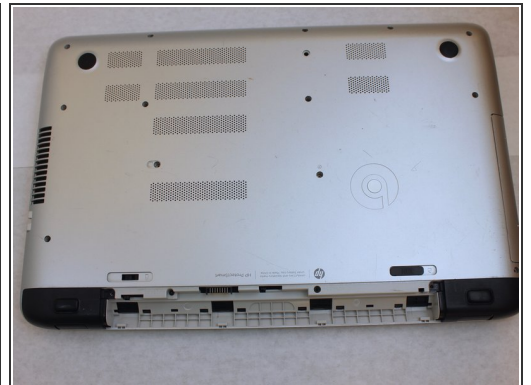
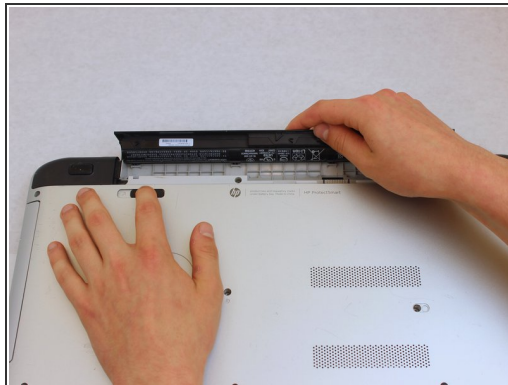
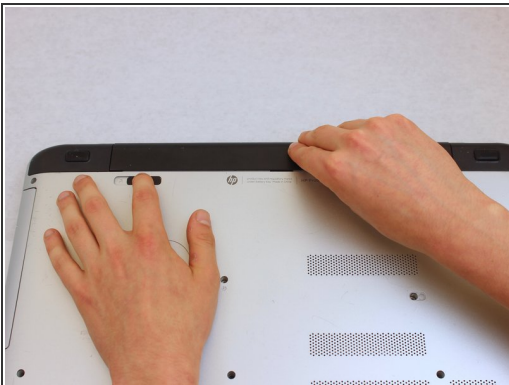
- Make sure that the laptop is completely powered off. The power light should remain off.
- Disconnect all cables and external devices from the laptop.

Step 3



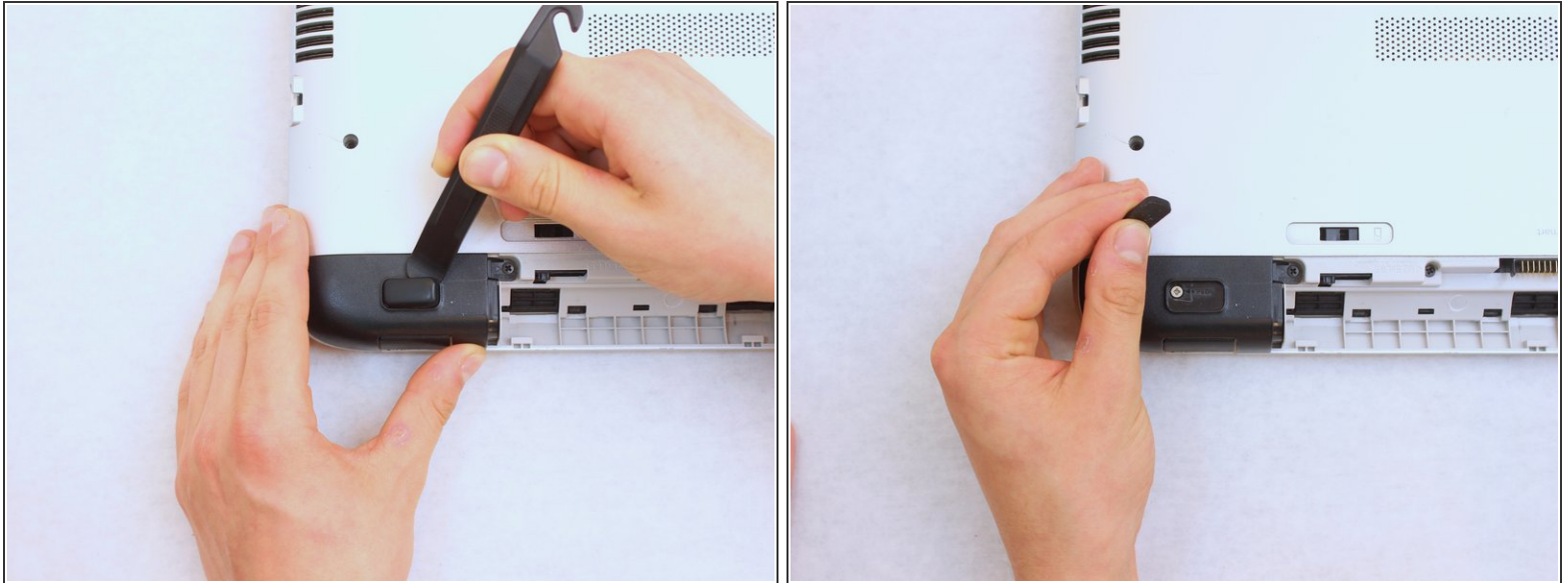
- Close the laptop and flip it over.

Step 4



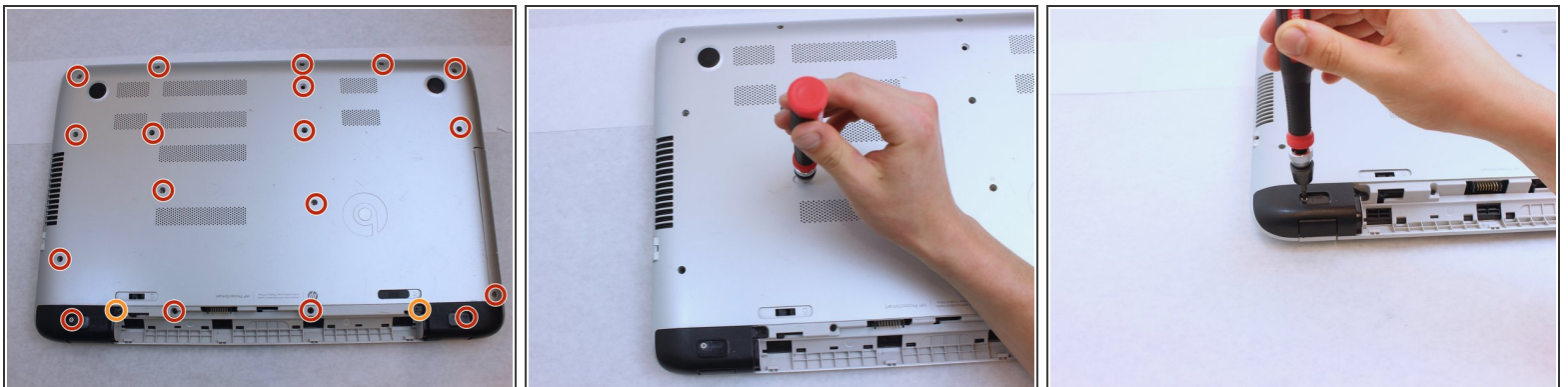
- Slide the battery release latches toward the center of the laptop.
- Remove the battery.

Step 5



- Remove the rubber feet on each corner cover with a plastic spudger or plastic opening tool.

Step 6



- Remove the following screws from the back case and corner covers:
 - Eighteen 6 mm Phillips #0 screws
 - Two 7 mm Phillips #0 screws

i If you do not have a magnet that can lift the screws out, you may have to turn the laptop over until each screw drops into your hand.

! Do not proceed unless all the screws are out! You can severely damage your keyboard in the following steps if you still have a screw in place.

This document was generated on 2020-11-28 07:35:13 AM (MST).

Step 7



- Lift the corner covers out with a plastic spudger or plastic opening tool.

Step 8



- Remove the optical drive cover with a spudger or plastic opening tool.
- Remove the two 2 mm Phillips #00 optical drive screws.

Step 9





- Turn the laptop over and open the lid.

Step 10

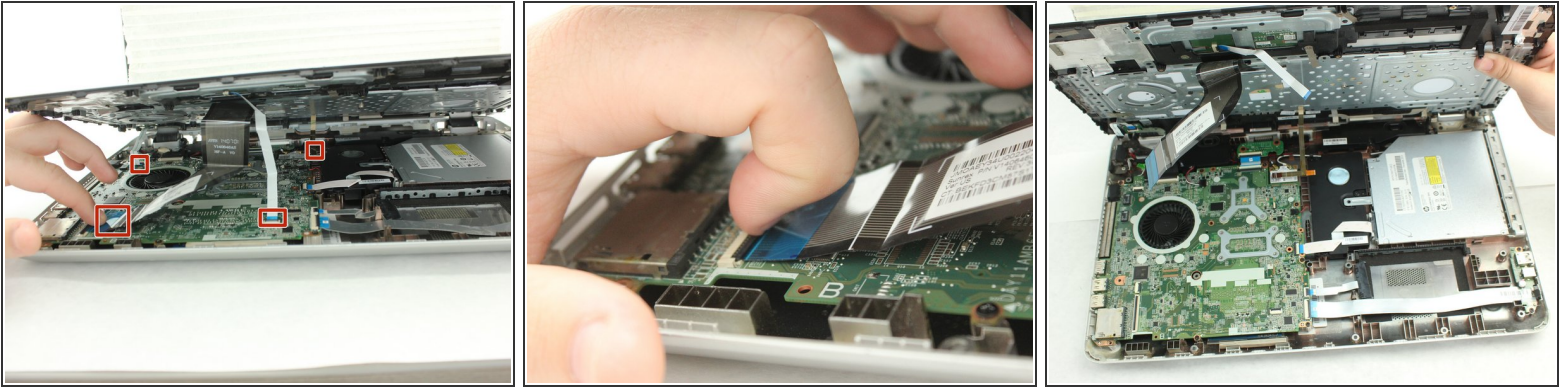


- Begin prying up the keyboard at a front corner of the laptop with a plastic opening tool.
- Continue prying up the keyboard, working your way toward the other front corner and then along the sides.

 Don't lift the keyboard out yet when it separates from the frame. It still has cables attached on its underside!

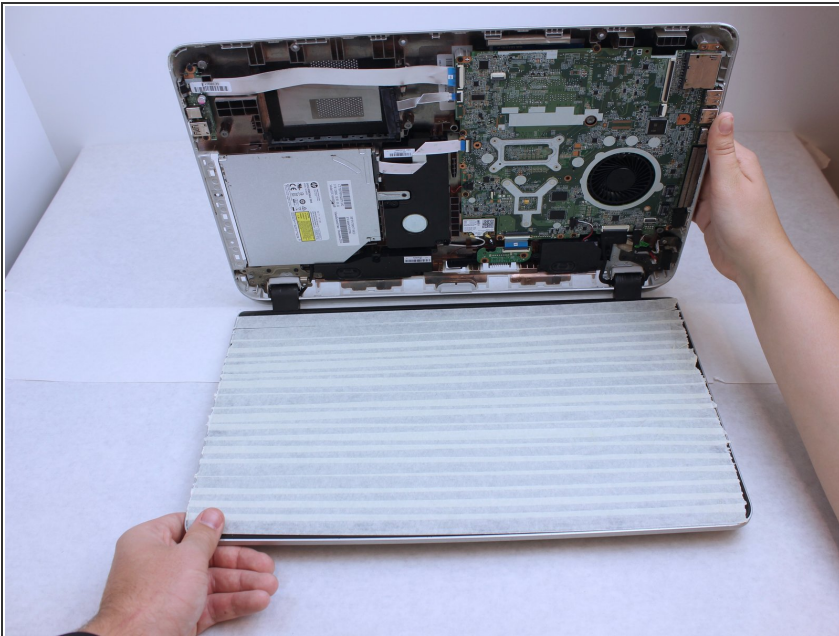
 It is normal to hear loud pops and clicks at this step.

Step 11



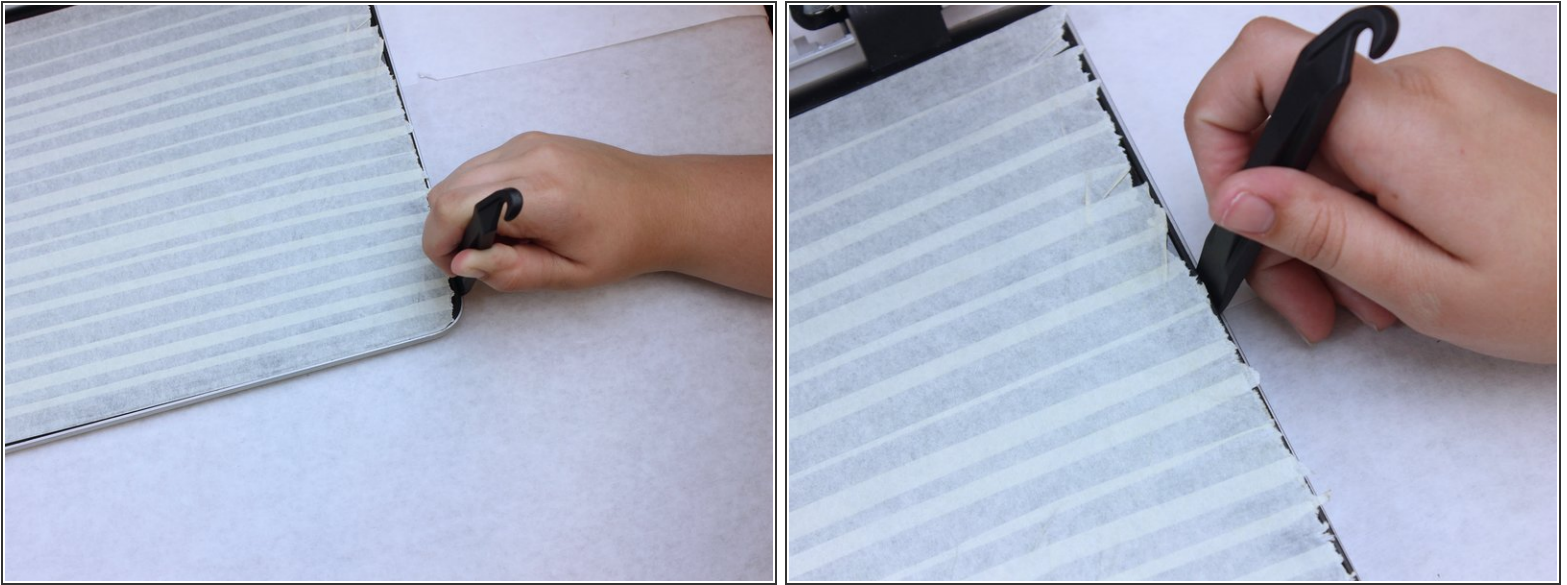
- Disconnect the four ribbon cables that come from the underside of the keyboard.
 - ⓘ To release each ribbon cable, gently pry up the retention clamp with a fingernail or plastic spudger to a 90 degree angle. Then, pull the cable out.
 - ⚠ Double-check that all cables connecting the keyboard to the base of the laptop have been completely disconnected before removing the keyboard.
- Lift the keyboard up and set it to the side.

Step 12



- Turn the laptop so that it rests on the top cover.
- ⓘ This prevents the laptop from falling over when you are not holding it.

Step 13



- Starting at a corner, pry up the screen with a plastic pry tool.
- Continue around the screen until the screen has completely separated from the top cover.
- ⚠ Don't insert the tool more than necessary along the top of the screen, or you may damage a small circuit board located in that area.
- ⚠ Don't lift the screen away from the computer yet. There are still cables connected!
- ℹ It is normal to hear some loud pops and clicks at this step.

Step 14



- Open the laptop to its full extension.

⚠ Do not force the laptop open farther than it can with minimal force. This can damage the screen, hinges, and internal components!

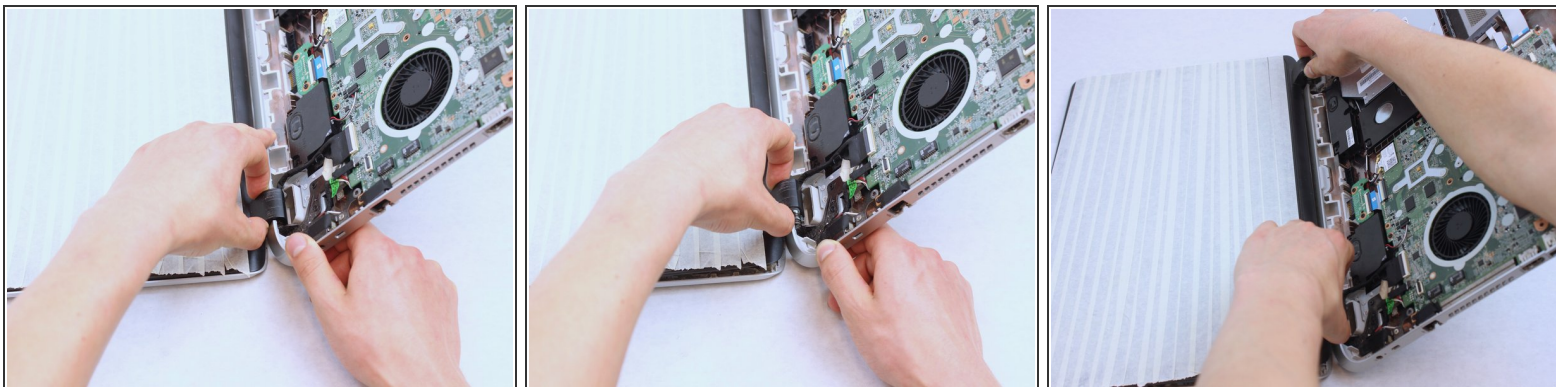
Step 15



- Release the primary display ribbon cable by gently prying up the retention clamp to a 90 degree angle.
- Pull out the smaller sliding connector next to it.

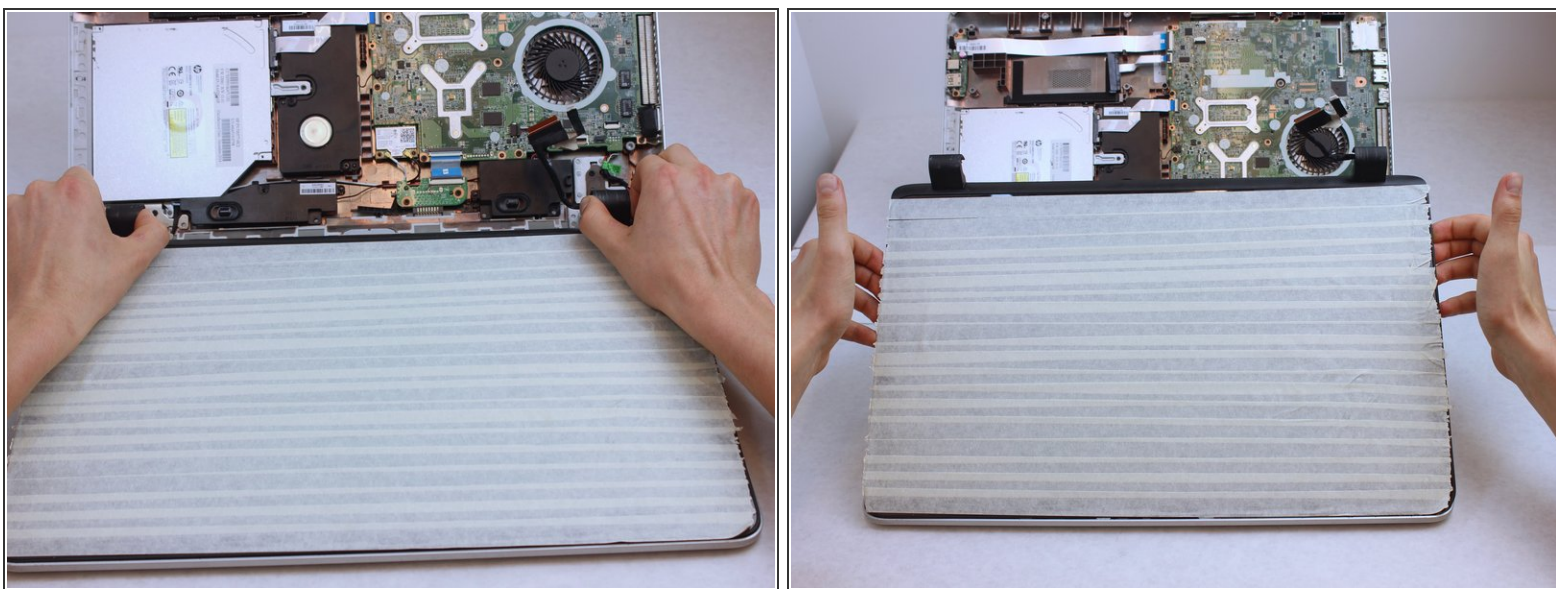
⚠ Be gentle when handling the display cable, and be sure to pull the connectors straight out of their sockets.

Step 16



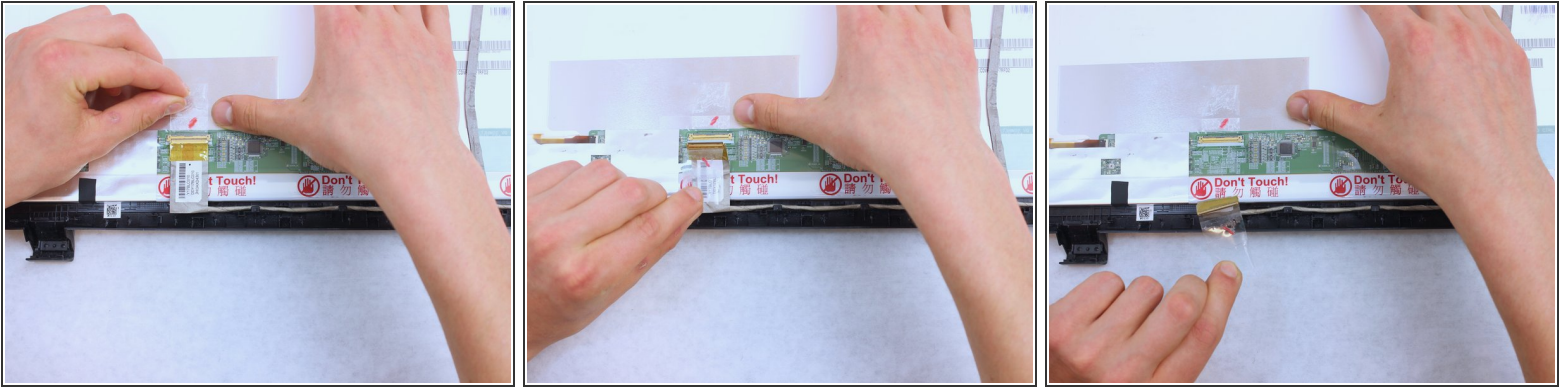
- Gently pry the hinges away from the bottom mount.
- ⓘ It is normal to hear two loud clicks as these come away.

Step 17



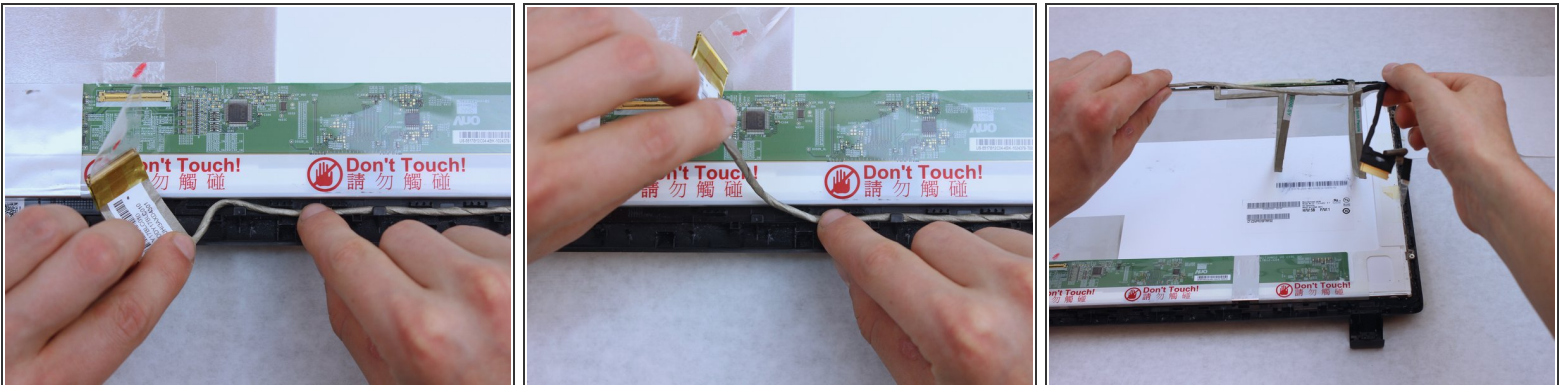
- Gently lift the screen, bezel, and backlight panel out by the hinges.
- Set them down so that the internal components face up.

Step 18



- Carefully peel up the tape securing the connector on the back of the display panel.
- Remove the connector from its socket by carefully pulling straight back on the tape.
- If the flat part of the cable is stuck to the display panel, slowly pull it up to break the adhesive.

Step 19

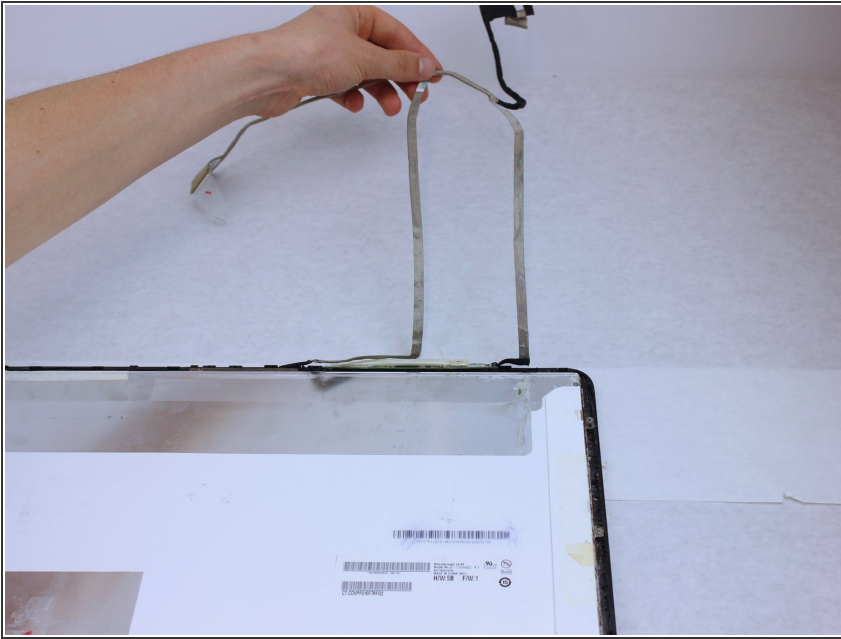


- Follow the display cable back toward the hinge cover, carefully pulling it up from the routing channel as you go.



Don't pull hard on the cable. If you have trouble getting it to come out of the channel, try pulling or even pushing from a different angle.

Step 20



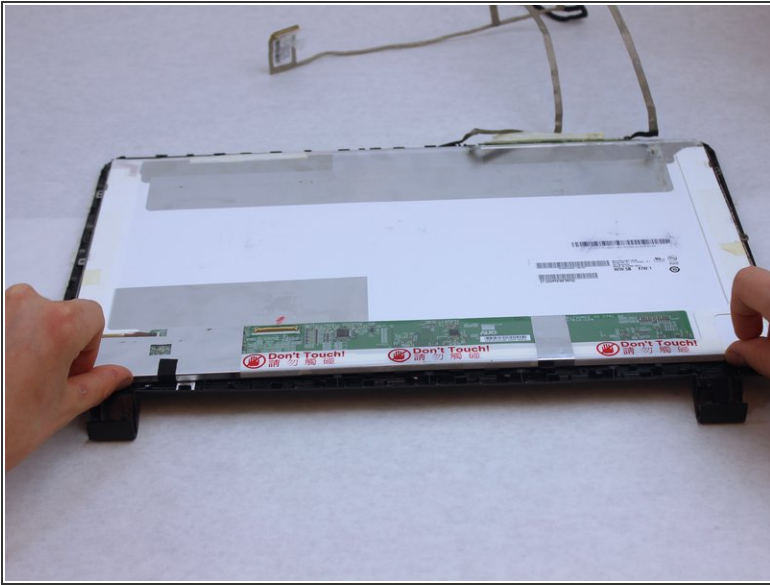
- Lift the display cable up and fold it out of the way.
- If part of the cable is stuck to the display panel, slowly pull up on it to release the adhesive.
- ⚠ Be careful not to dislodge the circuit board next to the display panel while moving the display cable.
- ★ During reassembly, make sure that the small circuit board at the top of the display is properly seated on its two plastic pins.

Step 21



- Remove the six 3 mm Phillips #00 screws from the backlight frame.

Step 22



- Lift the backlight panel out and replace it.

To reassemble your device, follow these instructions in reverse order.