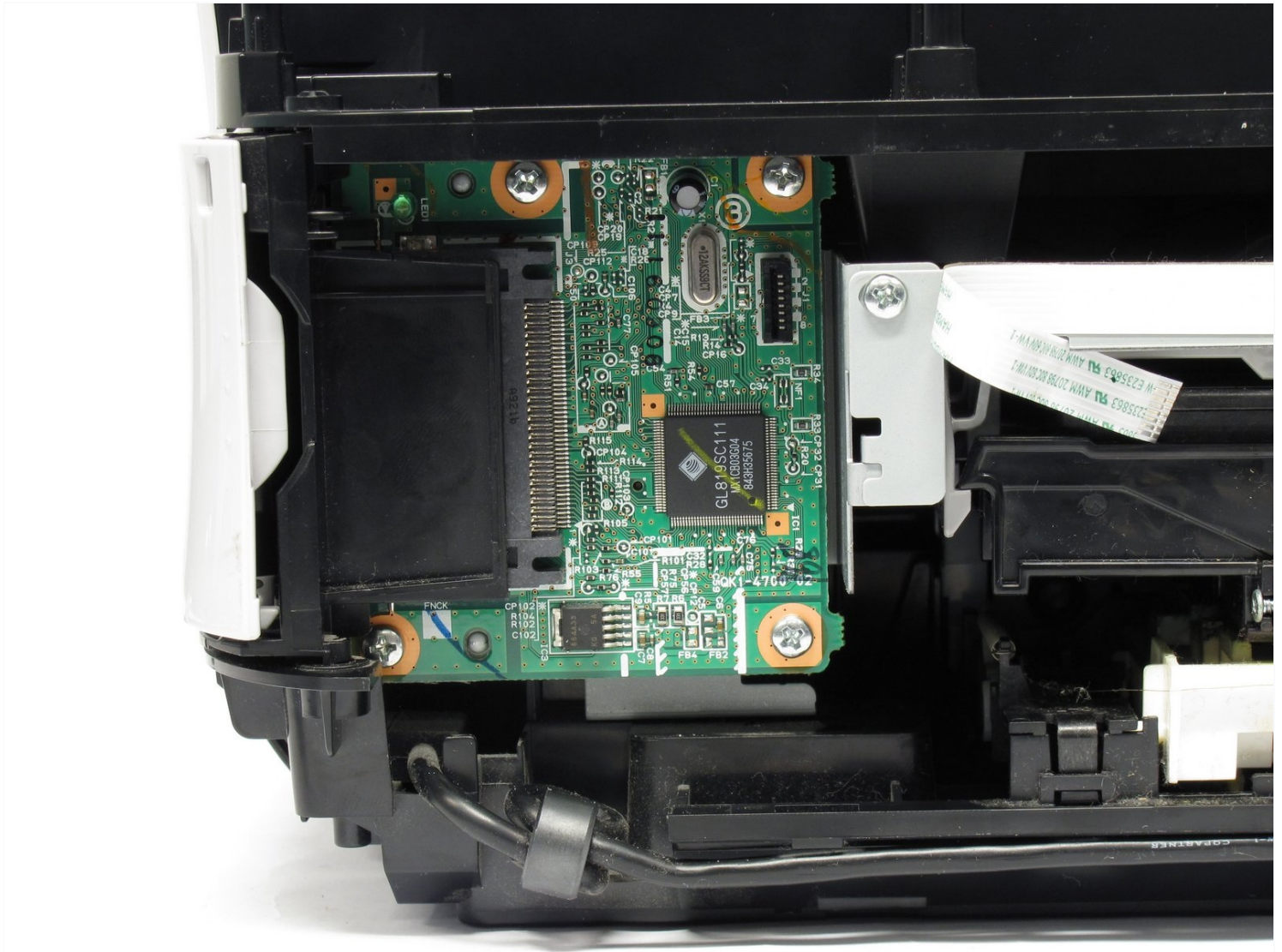




Canon Pixma MP480 Data Port Replacement

Use this guide to replace a broken data port to...

Written By: Steven MacLean



INTRODUCTION

Use this guide to replace a broken data port to regain your USB and card readers.

[Troubleshooting Page](#)

Complete the disassembly guide before installing a new data port, as it is a prerequisite.

TOOLS:

[Phillips #1 Screwdriver](#) (1)

[Spudger](#) (1)

[iFixit Opening Tool](#) (1)

PARTS:

[Canon Pixma MP480 Data Port](#) (1)

Step 1 — Rear and Side Panel



- Remove the two 7.9 mm screws using a Phillips #1 screwdriver.

Step 2



- Lift up the back cover to remove it.
- ① You may need to lift firmly as it requires quite a bit of force.

Step 3



- Open the front tray.

Step 4



- Open the scanner compartment.
- ① Make sure the blue lever locks into place to keep the compartment open.

Step 5



- Remove the blue lever from its slot by pushing it back and twisting clockwise.
- Close the scanner compartment and cover.

Step 6



- Pry open the side cover with the plastic opening tool.

Step 7



- Flip the printer over so that you are facing the bottom of the printer.
- Use the plastic opening tool to remove the corner of the side panel from the plastic pin.

Step 8



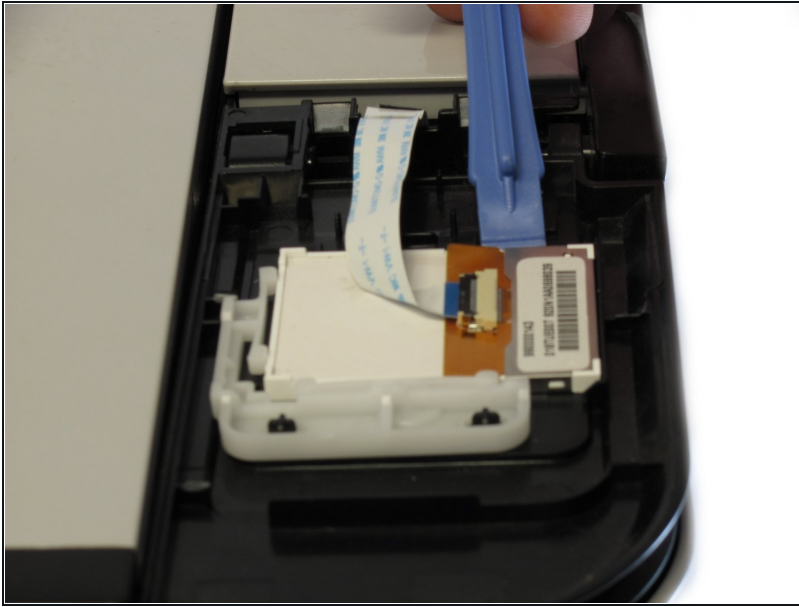
- Use the plastic opening tool to loosen the side panel from the bottom of the printer.

Step 9 — LCD



- Using the plastic opening tool, pry off the top cover of the LCD assembly.
 - ① Pry around the front and side edges for the easiest removal.

Step 10



- After removing the top cover of the LCD assembly, remove the LCD using the plastic opening tool.

Step 11



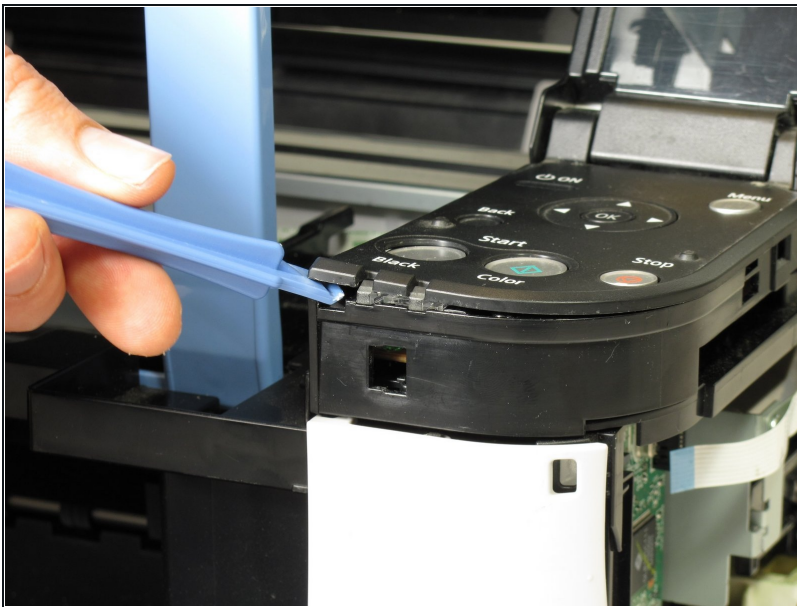
- Gently pull the ribbon cable to remove the LCD completely.

Step 12 — Buttons



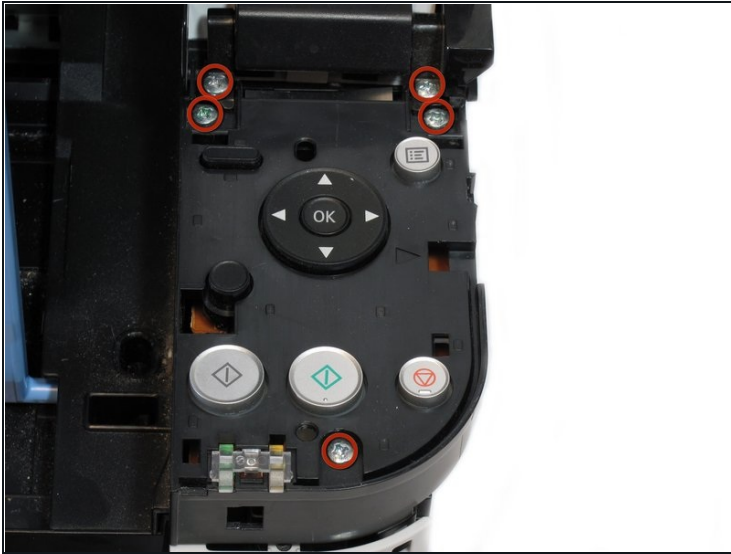
- Locate the buttons on the printer.

Step 13



- Using the plastic opening tool, gently pry around the button cover to remove it from its fixture.

Step 14



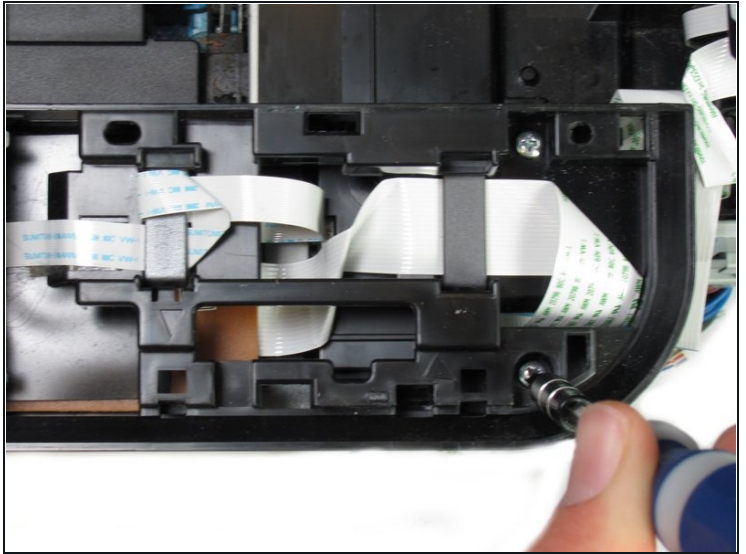
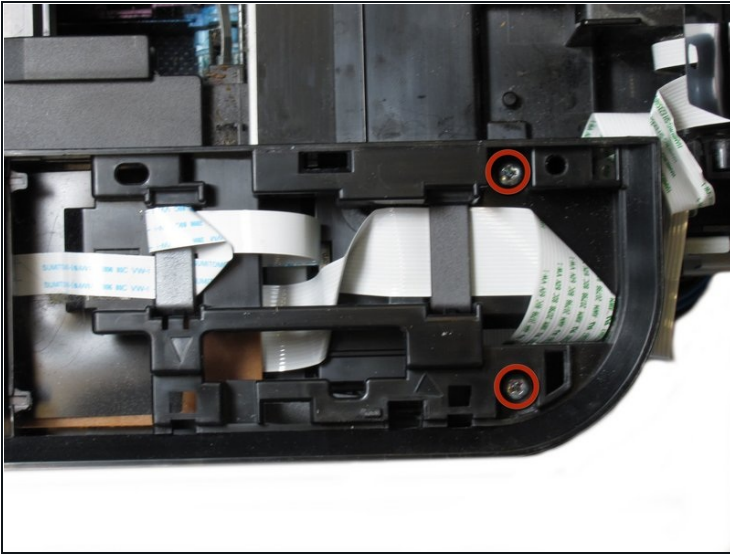
- Remove the five 7.7 mm screws using a Phillips #1 screwdriver.

Step 15



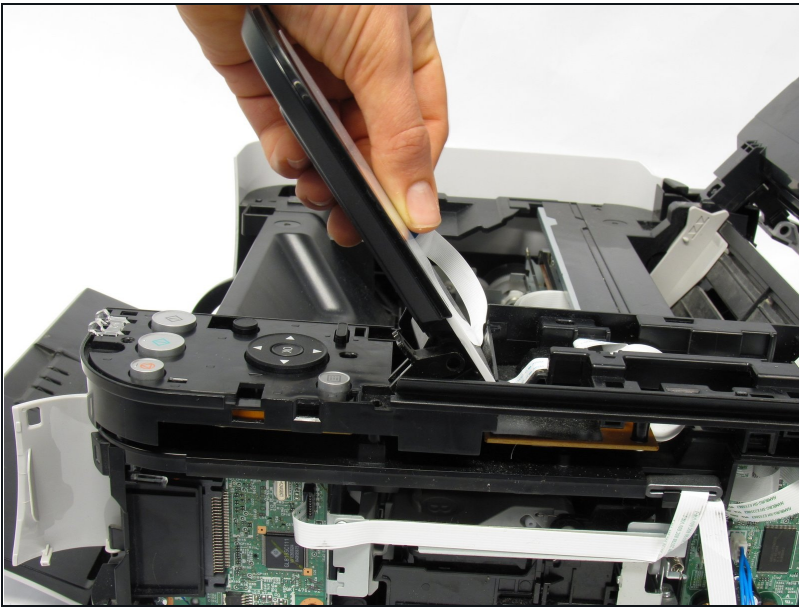
- Using the plastic opening tool, gently pry around the cover behind the LCD screen to remove it from its fixture.

Step 16



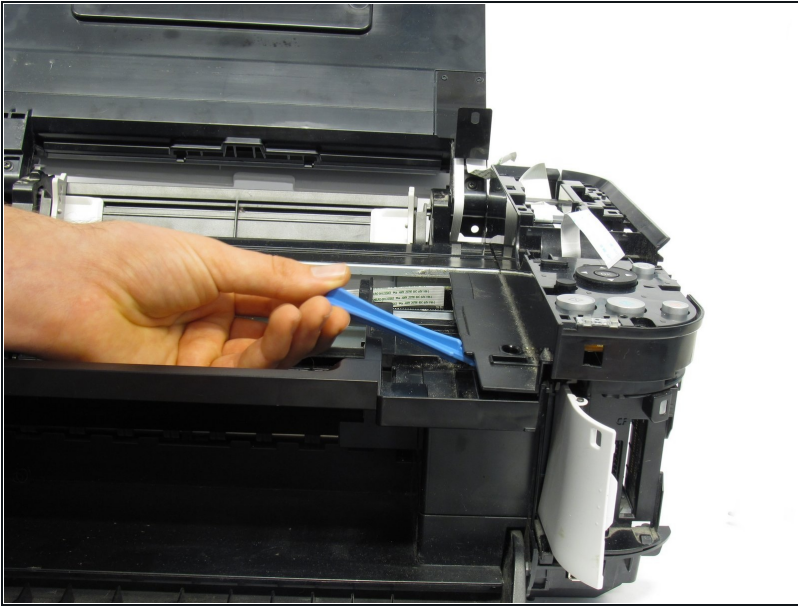
- Remove the two 7.8 mm screws using a Phillips #1 screwdriver.

Step 17



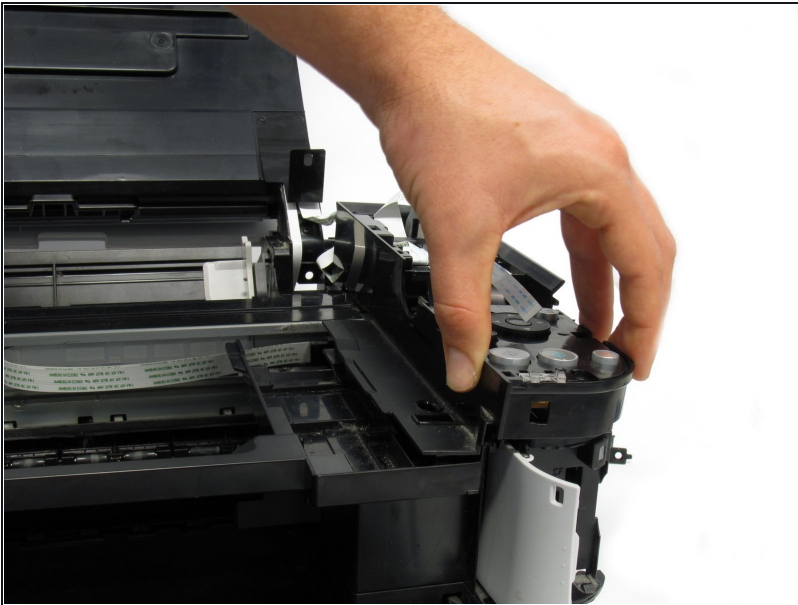
- Gently pull the LCD screen up to remove it from its fixture.

Step 18



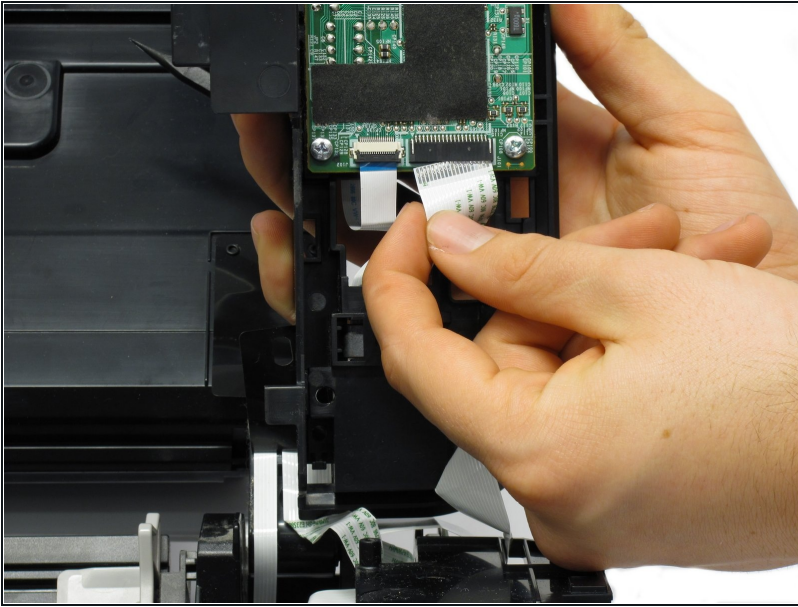
- Use the plastic opening tool to pry off the plastic button assembly.

Step 19



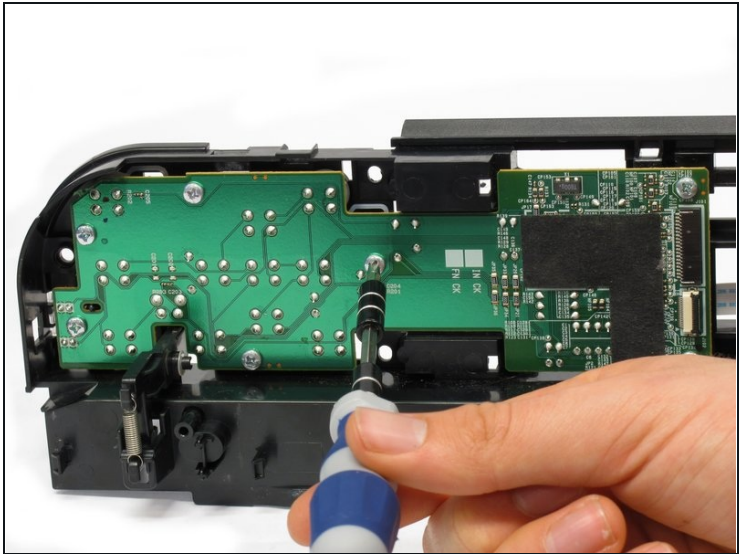
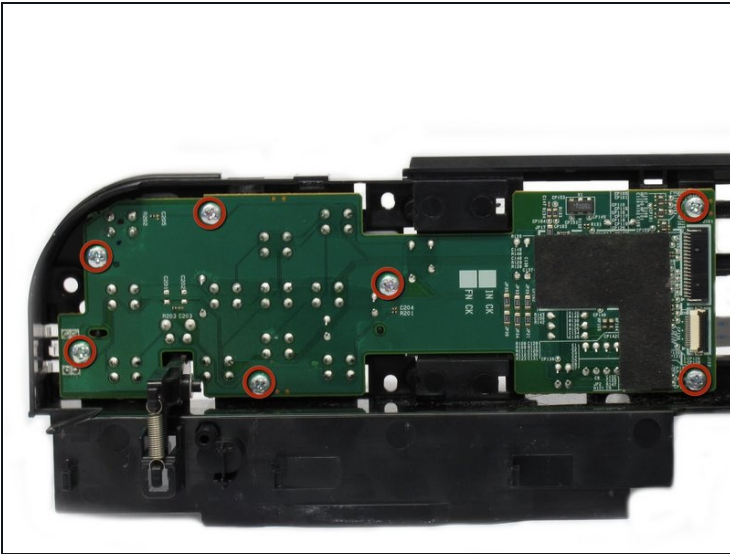
- Gently pull the plastic button assembly up to remove it.
⚠ The plastic button assembly has a ribbon cable connected on the bottom, so make sure to be careful pulling it.

Step 20



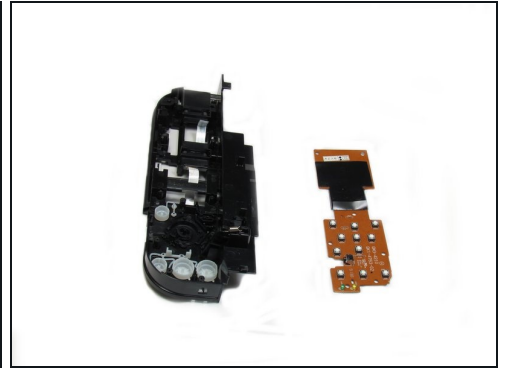
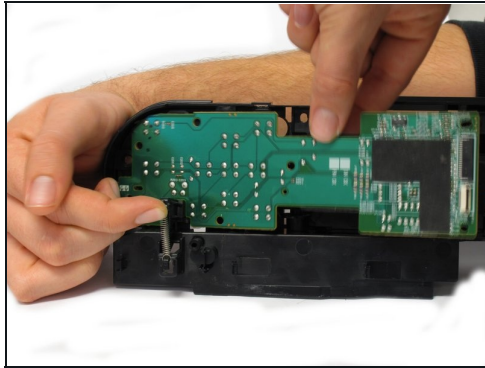
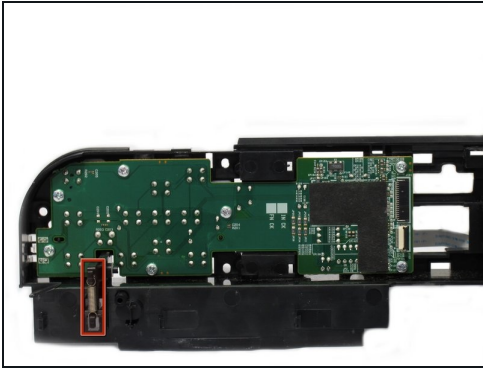
- Remove the ribbon cable connected to the backside of the plastic button assembly.

Step 21



- Remove the seven 8.7 mm screws using the Phillips #1 screwdriver.

Step 22



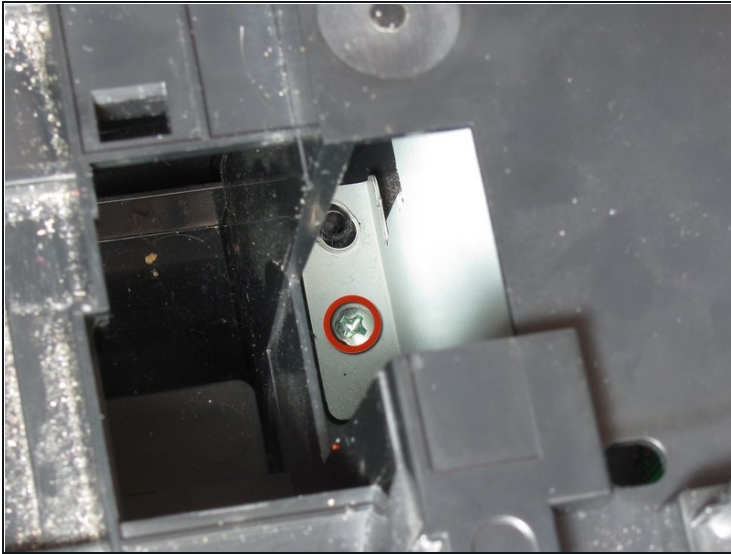
- Locate the spring that holds the PCB in place on the bottom left of the plastic button assembly.
- Gently lift the spring and pull the board out of its plastic button assembly.

Step 23



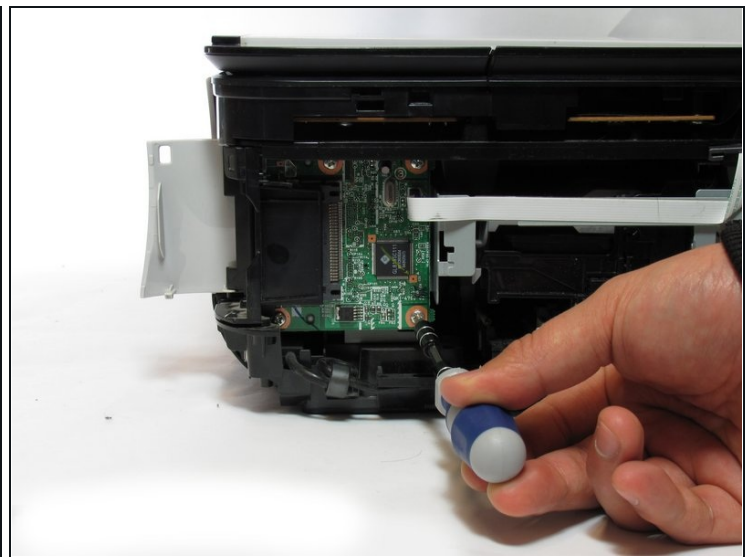
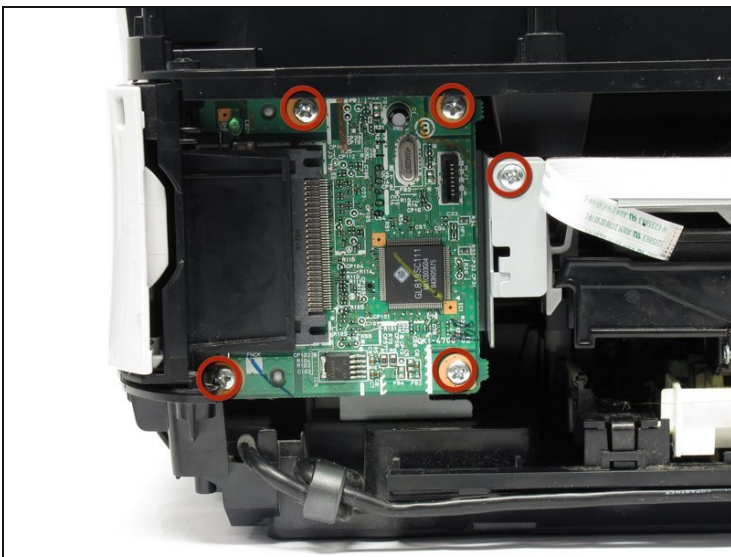
- Remove the buttons from the plastic button assembly.

Step 24 — Data Port



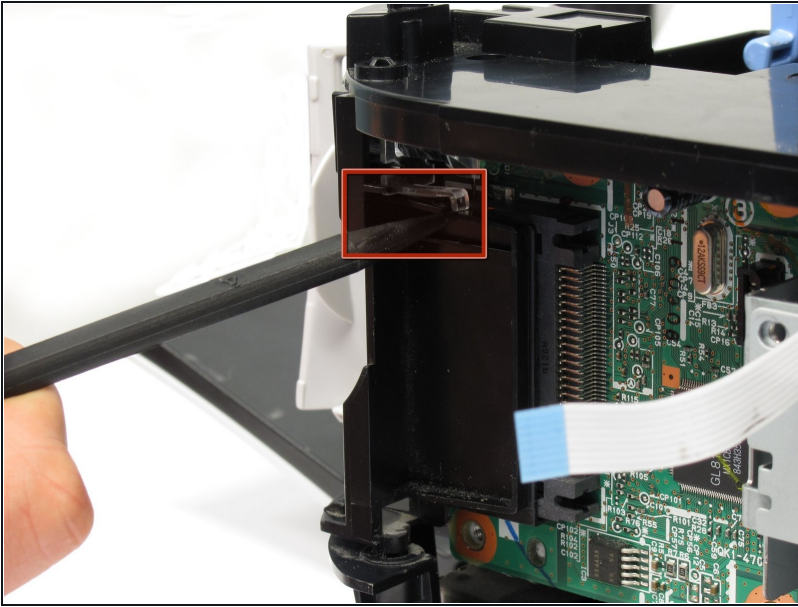
- Remove the screw using the Phillips #1 screwdriver.
- 7.5 mm Phillips #1 screw

Step 25



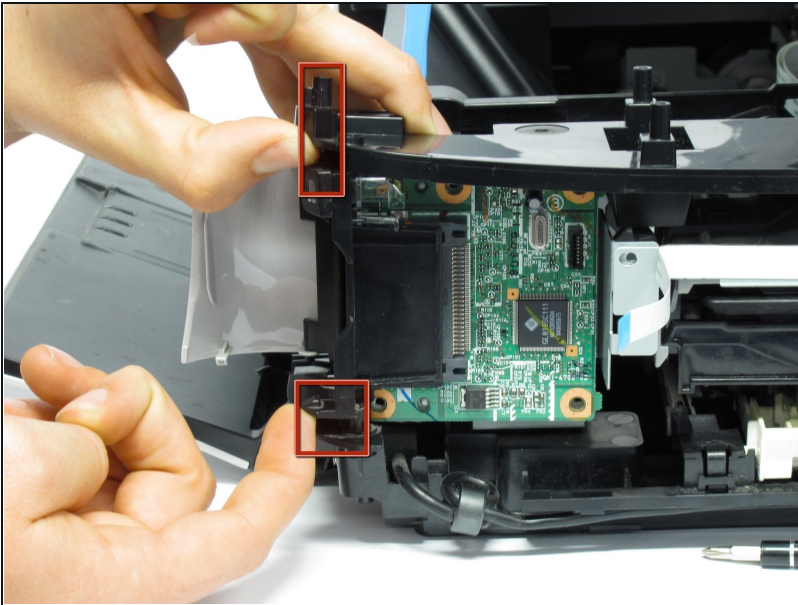
- Remove the five screws using the Phillips #1 screwdriver.
- Five 3.5 mm Phillips #1 screws

Step 26



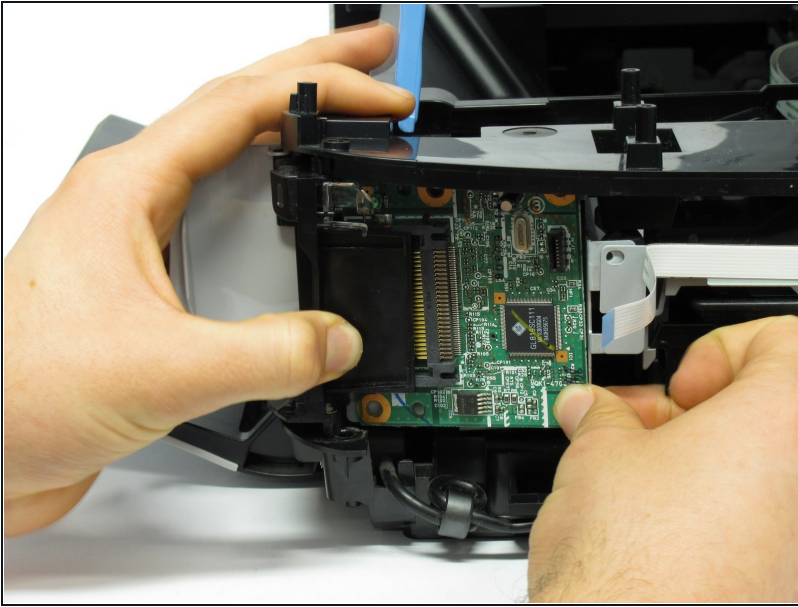
- Remove the small plastic clip using the spudger.
- Small plastic clip

Step 27



- Pull plastic inserts out of the holes in the top and bottom.
- Top and bottom plastic inserts

Step 28



- Remove the board from the printer by pulling the board towards the back of the printer.
- ① This requires effort and time as the board comes out slowly.

To reassemble your device, follow these instructions in reverse order.