



HP 15-da0012dx Screen Replacement

Replacement of a broken or damaged screen on a HP 15-da0012dx laptop. This includes screens which are cracked, have dead pixels, or other screen errors.

Written By: Chase Wilson



INTRODUCTION

If your laptop screen is broken or damaged, use this guide to replace the screen. To do so you need a Phillips #1 screwdriver, opening tools, tweezers, and safe pry tools. There are some difficult steps to this guide, especially be careful not to damage any wires in this process.



TOOLS:

- [iFixit Opening Tool](#) (1)
 - [Phillips #1 Screwdriver](#) (1)
 - [ESD-safe pry tool](#) (1)
 - [Tweezers](#) (1)
-

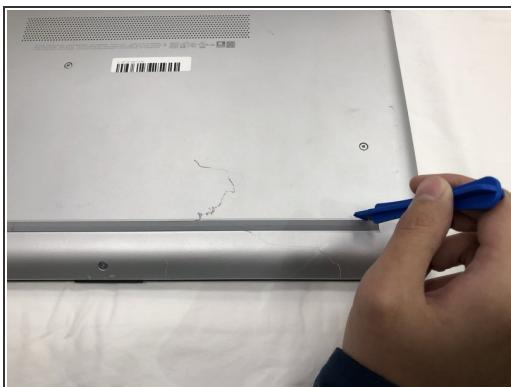
Step 1 — Battery



 **Power down your laptop before proceeding.**

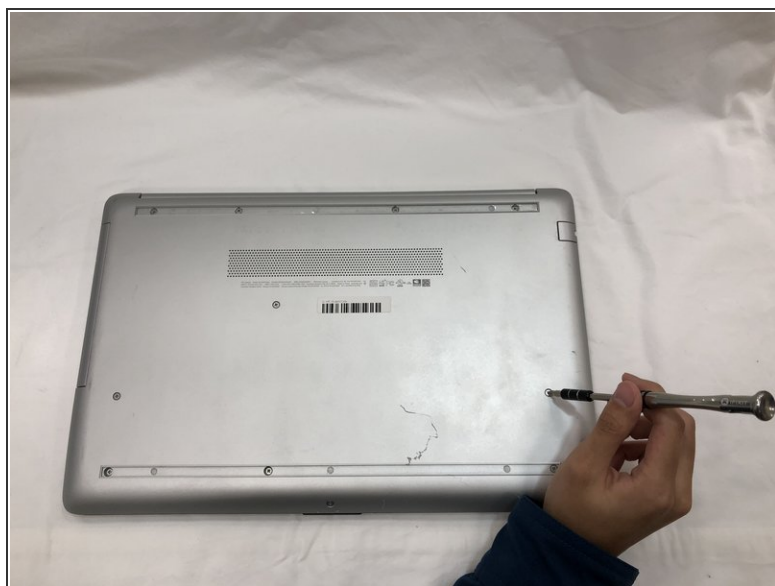
- Turn your laptop over so that the Laptop Identification Tag on the underside of the laptop faces the ceiling.

Step 2



- Using the plastic opening tools, peel back the plastic feet from the underside of the laptop.

Step 3



- Using a Phillips #1 screwdriver, remove the eleven 9.0 mm screws holding the back cover in place.

Step 4



- Slide the optical drive out of the computer.

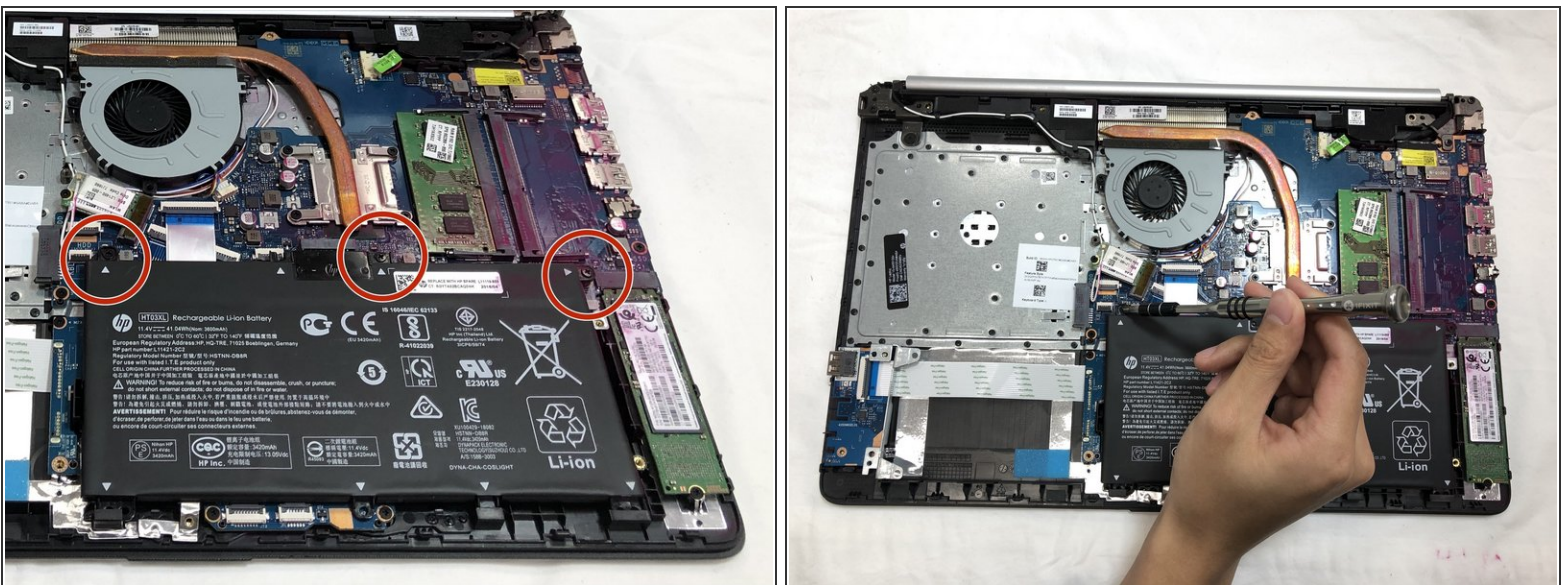
Step 5



- Flip the computer over and open the screen.
- Start from a corner and run the plastic opening tools along the edge of the back cover.
- After the cover has been completely loosened around the entire perimeter, close the screen and flip the computer over.
- Gently pry back the cover starting from the middle, bottom edge.

⚠ Make sure not to bend or crack the plastic cover.

Step 6



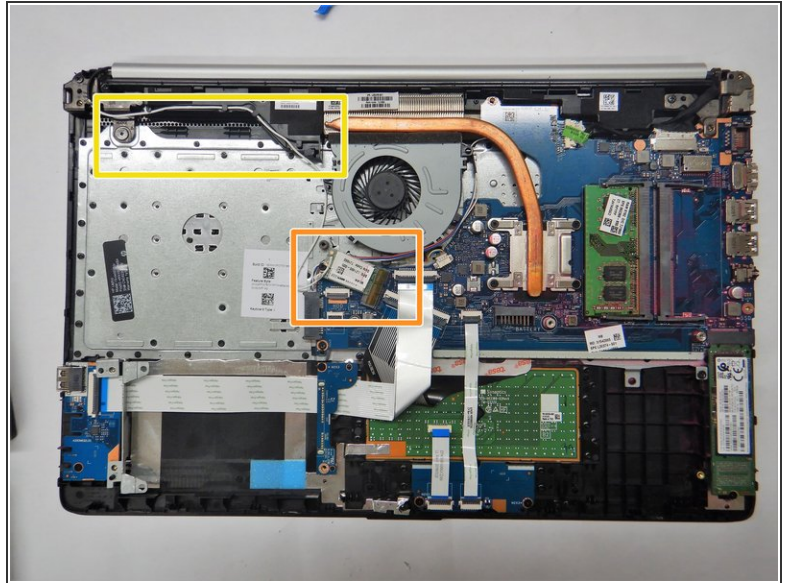
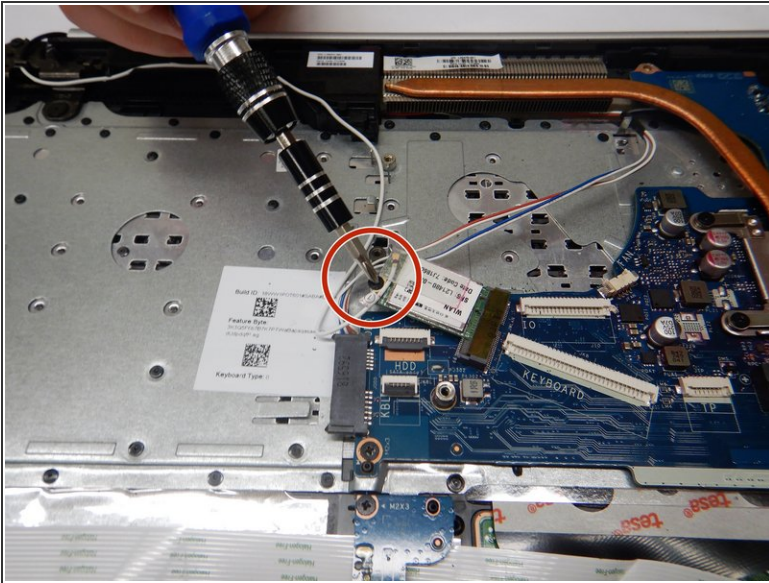
- Using the Phillips #1 screwdriver, remove the three 8.0 mm screws holding the battery in place.

Step 7



- Remove the battery by tilting the top of the battery towards you and pulling the battery away from the mounting tabs.

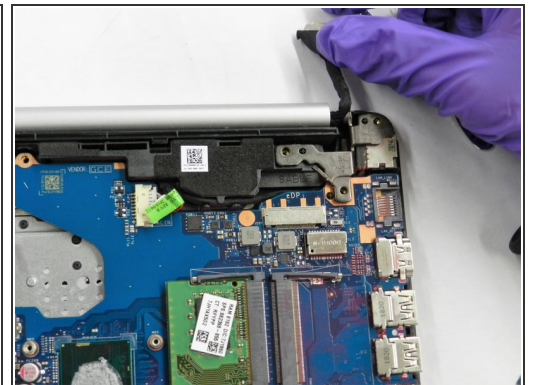
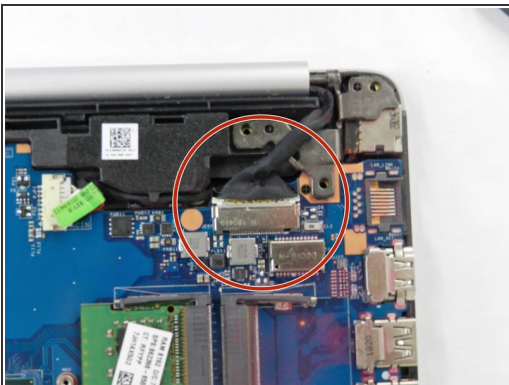
Step 8 — Screen



- Remove the 3 mm Phillips #0 screw securing the WLAN card in place.
- Carefully remove the WLAN card from the motherboard.
- Gently remove the antenna cable from the wire guides in the speaker and chassis.
- Place WLAN card off to the side being careful not to pull on the antenna cable.

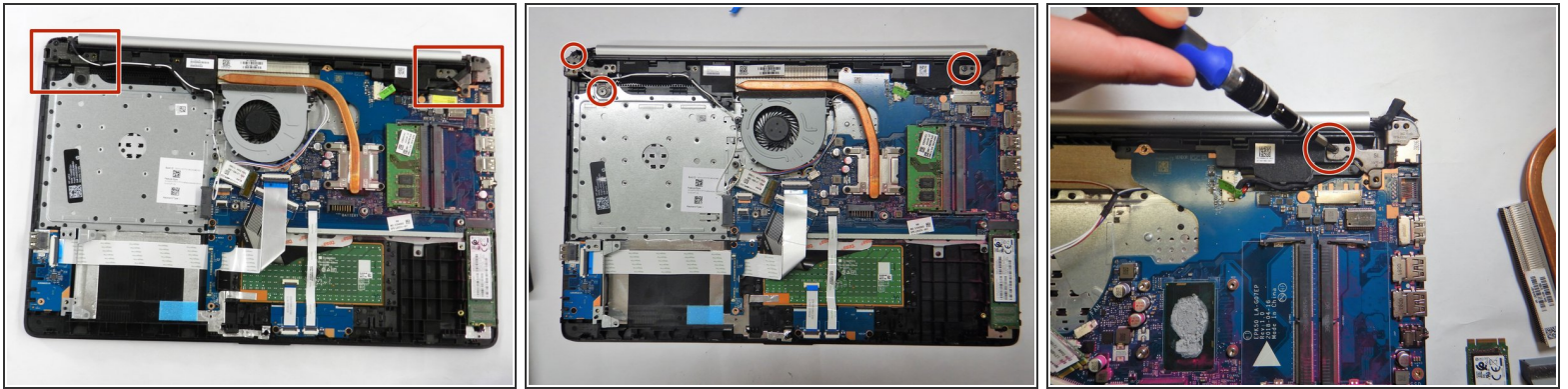
⚠ The antenna cable is soft and can easily be damaged.

Step 9



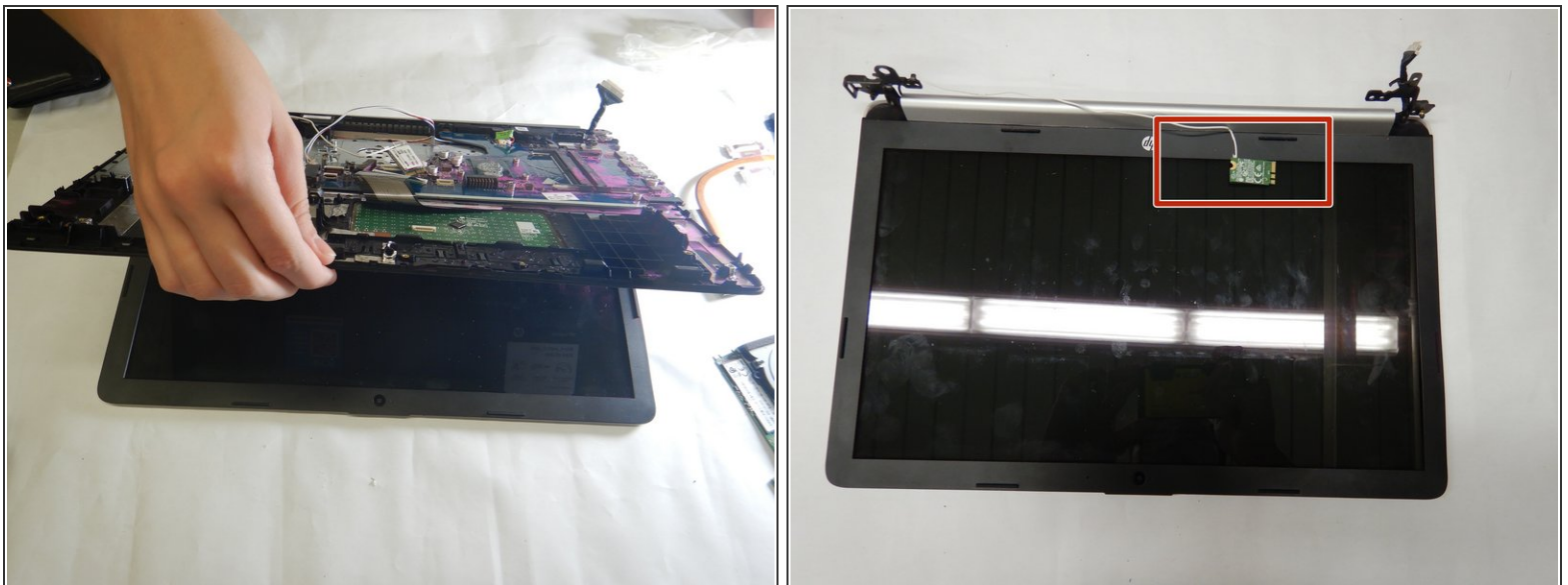
- Carefully use the metal tweezers to remove the display connection to the motherboard.

Step 10



- Use the Phillips #1 screwdriver to disconnect the display hinges from the base of the laptop.

Step 11



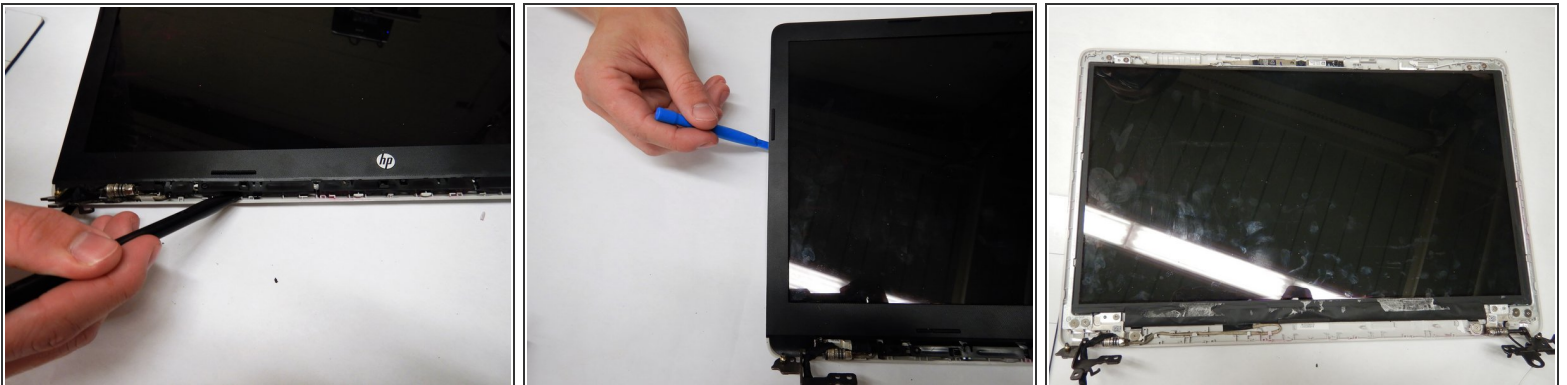
- Making sure to hold both the base and the screen, partially open laptop.
- Carefully remove screen from laptop, making sure that the WLAN card is safely removed with it.

Step 12



- Carefully use the pry tool to separate the screen side of the hinge cover from the screen.
- Rotate the hinge cover away from the screen to remove it from the screen.

Step 13



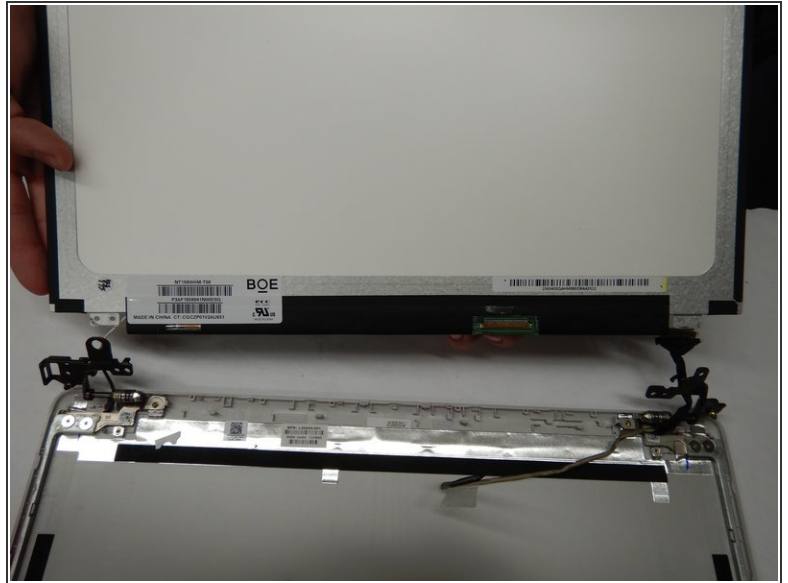
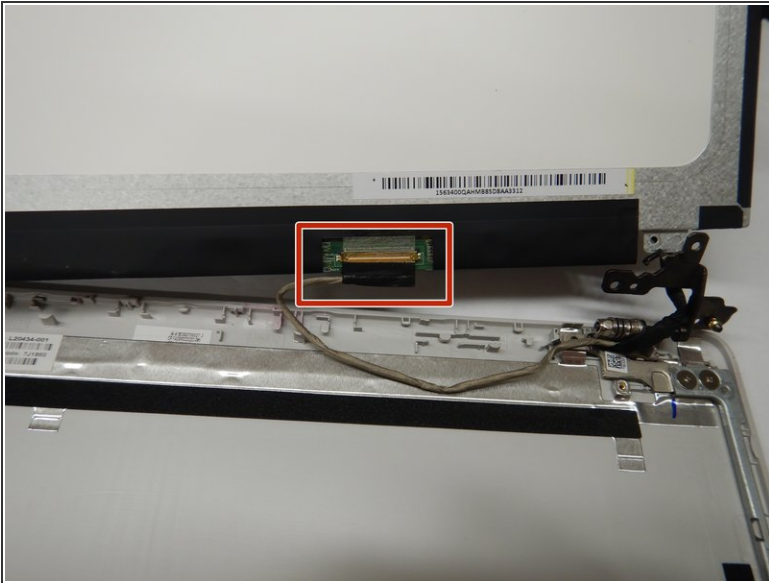
- Starting from the area near the hinges, gently remove the adhesive display bezel from around the screen using the iFixit opening tool.

Step 14



- Use the Phillips #1 screwdriver to remove the four 3.0 mm screws securing the screen to the top cover.

Step 15



- Carefully lift the screen, being aware to not pull on the display cable connecting the screen to the top cover.
- Gently remove the display cable from the back of the screen.
- Remove the screen from the display assembly.

To reassemble your device, follow these instructions in reverse order.