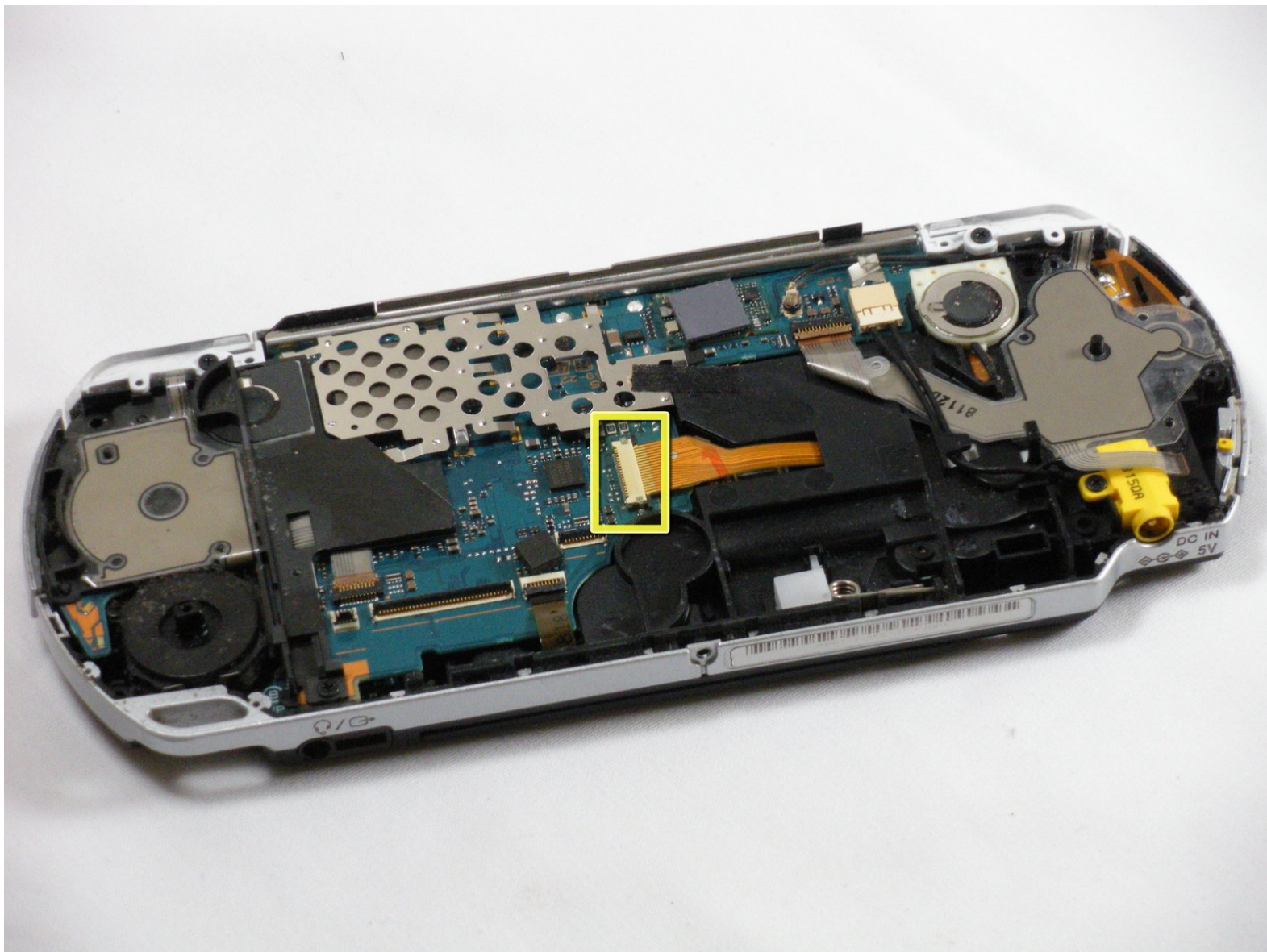




# PSP 2000 UMD Drive Replacement

Written By: pepe32290



# INTRODUCTION

Having trouble reading discs? This guide is for you!



## TOOLS:

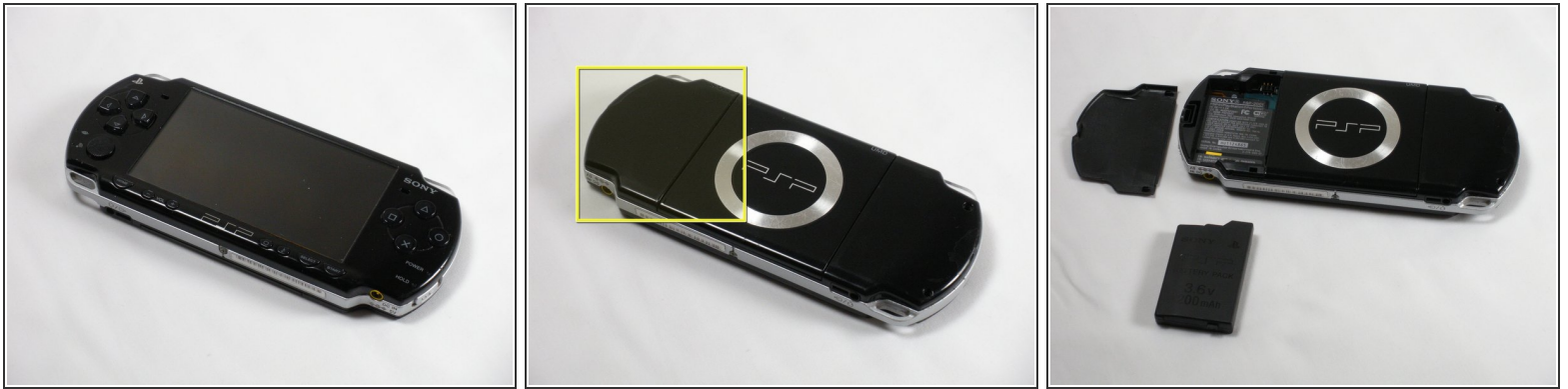
- [Phillips #00 Screwdriver](#) (1)
- [iFixit Opening Tool](#) (1)



## PARTS:

- [Sony PSP 2000/3000 UMD Drive](#) (1)
- [Sony PSP 2000 UMD Door](#) (1)

## Step 1 — Battery



- Place PSP face down, so that the UMD Drive is facing upwards.
- Locate the battery door and open.
- Remove the battery from inside.

## Step 2 — Front Casing



**⚠ This step requires the removal of the warranty sticker. Removing the sticker will void the warranty. According to the FTC removing this will not void your warranty.**

- Locate the sticker in the battery compartment labeled: *"En: Warranty Void if Seal Damaged."*
- Remove the sticker using the PSP Opening Tools.
- ⓘ Under the sticker is a 5mm Phillips screw needed in the next step.



## Step 3



- Remove four 5 mm Phillips from the case.

**i** If the screws stick in the case, you can use a magnetized screwdriver to draw them out.

## Step 4



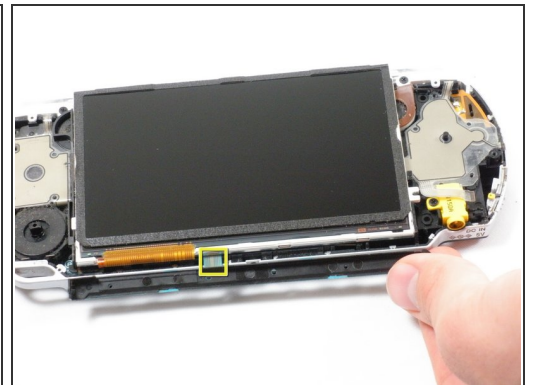
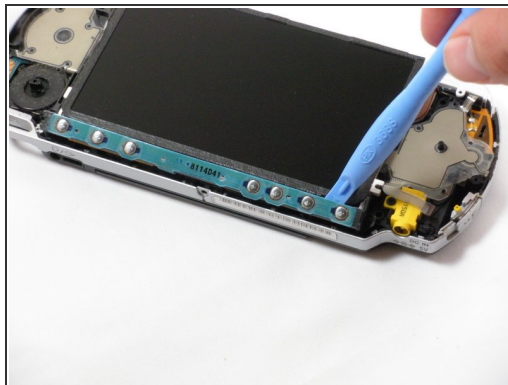
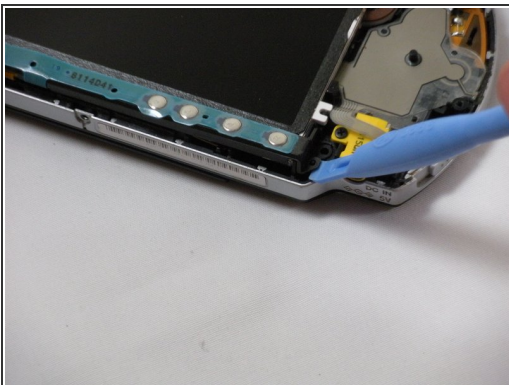
- Remove the following screws from around the bezel:
  - Two 4 mm Phillips
  - One 5 mm Phillips
- ☑ The two shorter 4 mm screws are on the top of the PSP; the longer 5 mm screw is on the bottom.

## Step 5



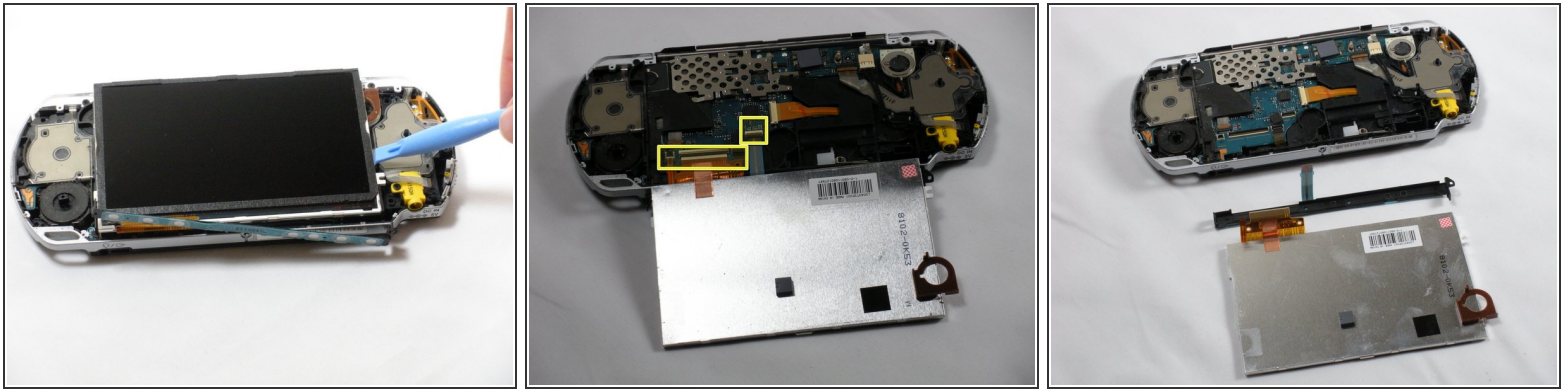
- Gently pry the front bezel away from the casing using a PSP opening tool.
- Start on the right hand side of the PSP bezel, and carefully work the tool around the side.
- ⓘ If you want to clean the control buttons or D-pad, you can easily pop them out once the faceplate is off and wipe them clean.

## Step 6 — Display



- Remove the home bar by gently prying on the left and right sides of it with the opening tools. Lift the bar out of the device.
- ⚠ A ribbon cable connects the home bar to the logic board. Be careful not to damage the cable when removing the bar.

## Step 7



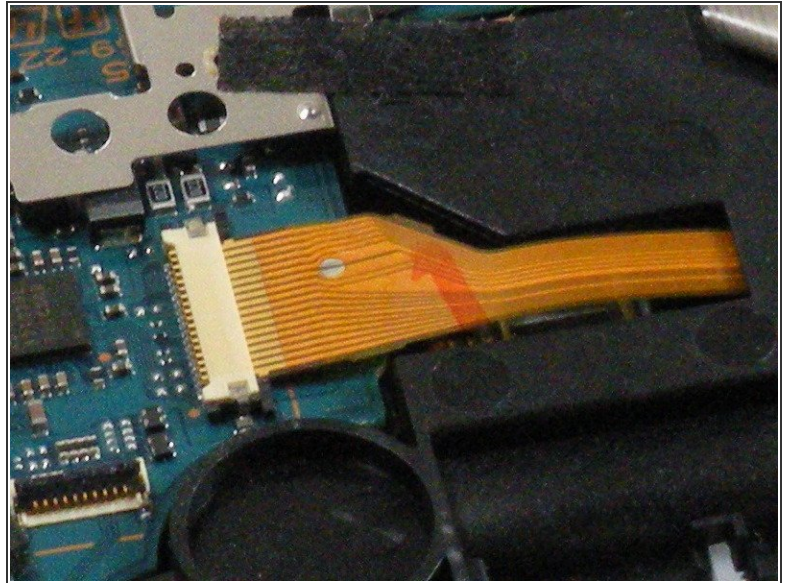
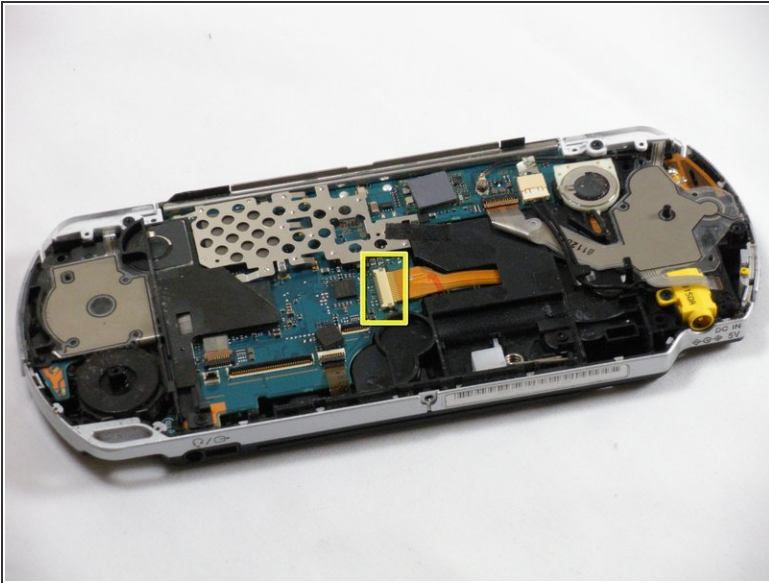
- With the home bar out of the way, gently pry up the display using the opening tools.

**⚠ There is another ribbon cable attached to the bottom of the LCD. Be careful not to damage either of the connectors when removing.**

- Lift the black tabs of the ribbon cable connectors using a opening tool. Pull the ribbons out towards the bottom of the PSP to disconnect.
- Gently lift out the display.



## Step 8 — UMD Drive



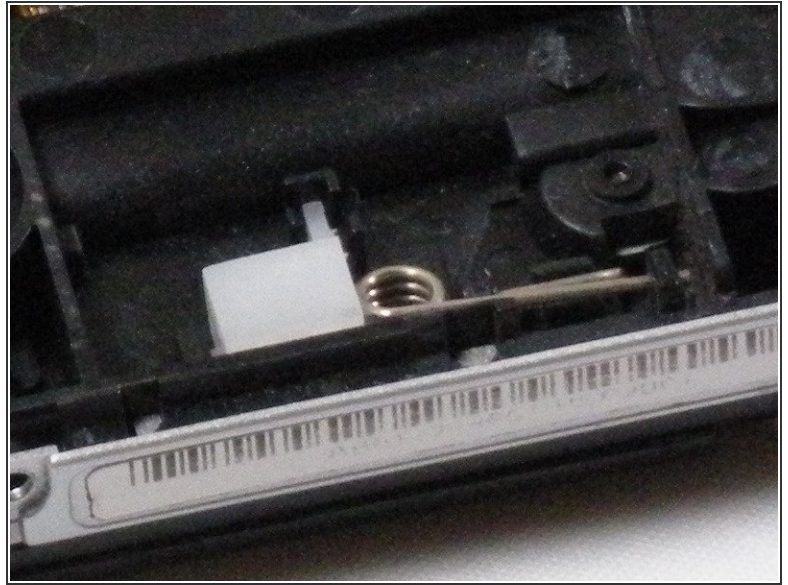
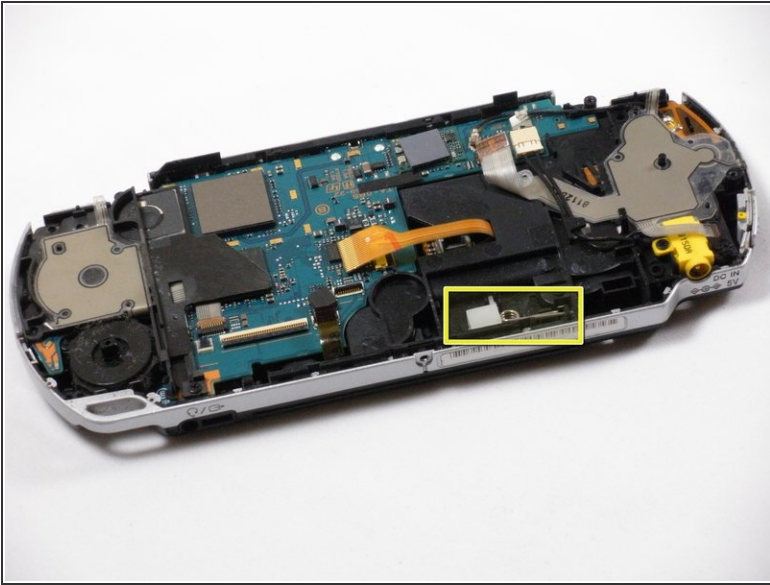
- Carefully disconnect the UMD drive ribbon cable from the logic board. Use the PSP opening tools to push the black tabs on the connector horizontally to free the cable.

**⚠ This connector cannot be removed vertically. Doing so will damage the connector and/or ribbon cable.**

- At this point it is useful to tape the loose metal parts with some masking tape so they don't fall out whilst you have the PSP the other way up.



## Step 9



- With the front side of the PSP facing you, locate small white plastic box with metal spring attached.
  - Remove the white plastic box and spring from the PSP.
- i** If you do not fully remove the spring, there is a risk of breaking the UMD Drive door while disassembling.

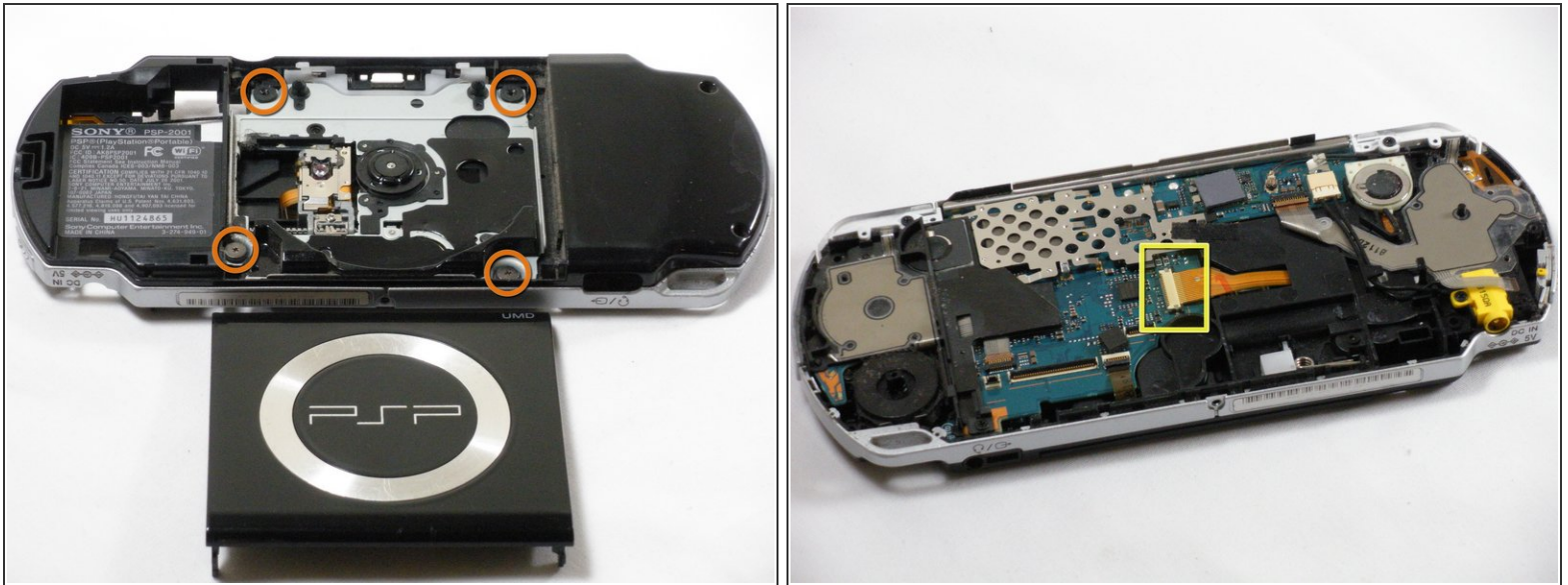
## Step 10



- Position the PSP so that the UMD Device is facing upwards.
- With the UMD drive open, locate the aluminum UMD eject bracket. Pinch upper arms inwards to dislocate them from the UMD door.
- The UMD eject bracket can now be easily pulled out.
- Gently pry on the left side of the UMD door to remove it.

**⚠ Be careful not to break off plastic knobs that secure the door in place, otherwise the UMD Drive will not open properly.**

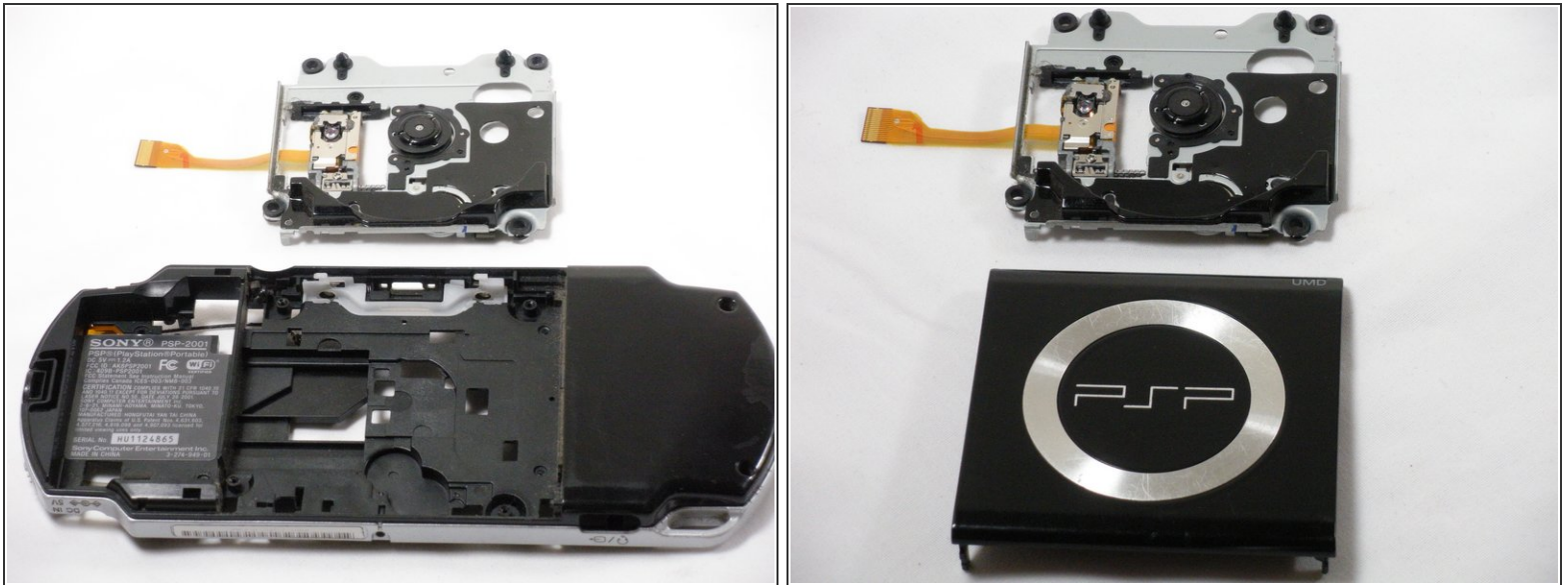
## Step 11



- With the UMD door off, locate and remove the four 4mm Phillips screws that hold in the UMD Drive in place.
- ☒ If you have not disconnected the UMD ribbon cable, do so now, as to not damage it when removing the drive.
- ☒ If you have not disconnected the UMD ribbon cable do so now, as to not damage it when removing the drive.



## Step 12



- With the four screws unscrewed, the UMD Drive can be removed. Gently lift the drive from its housing.
- ⚠ Make sure as to not damage the UMD ribbon cable (connecting it to the logic board) as you remove the drive.
- ⓘ This may be a good time to clean the laser head or any of the components inside the UMD Drive.

To reassemble your device, follow these instructions in reverse order.