



# Game Boy Color Front Housing Replacement

A guide on how to remove and replace the front housing case of the Game Boy Color.

Written By: Angela Yoeurng



## INTRODUCTION

Is the outside shell of your Game Boy cracked, damaged, or you're just getting sick of your old housing? This guide outlines how to get down to the front housing so you can swap it out!

---

### TOOLS:

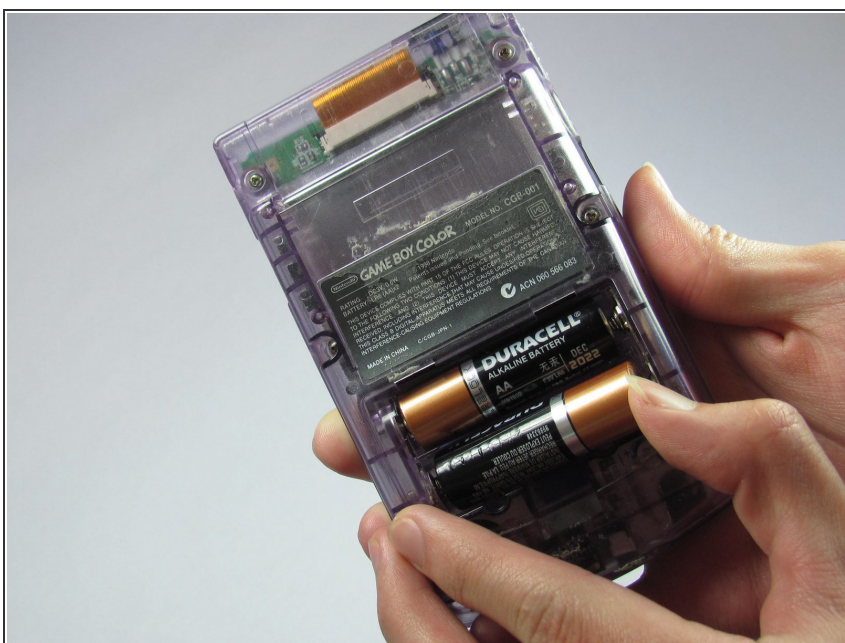
- [Phillips #1 Screwdriver](#) (1)
  - [Spudger](#) (1)
  - [Tri-point Y0 Screwdriver](#) (1)
  - [Tweezers](#) (1)
-

## Step 1 — Battery



- Locate the battery compartment on the back of the Game Boy Color.
- Push down on the tab and hinge the cover downwards and outwards to remove the battery cover.

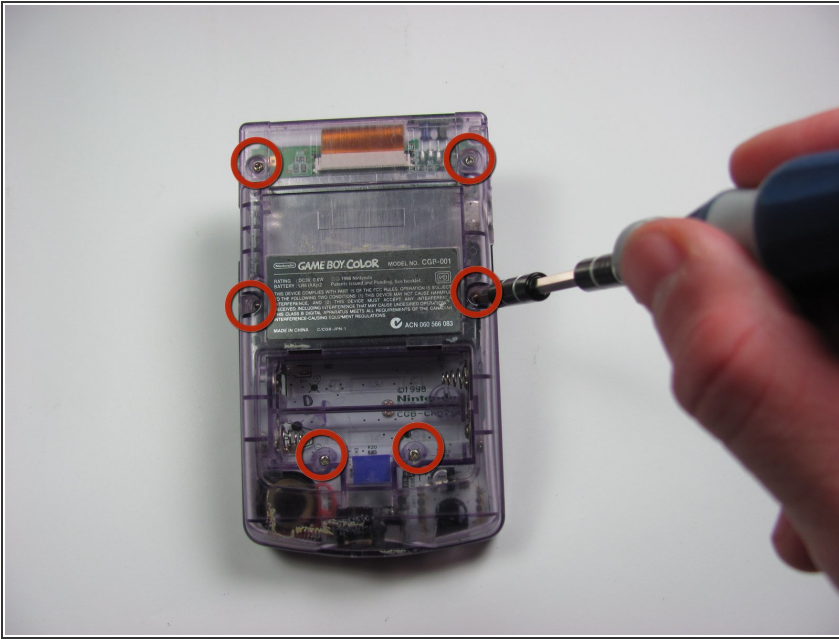
## Step 2



- Remove the batteries from the battery compartment.

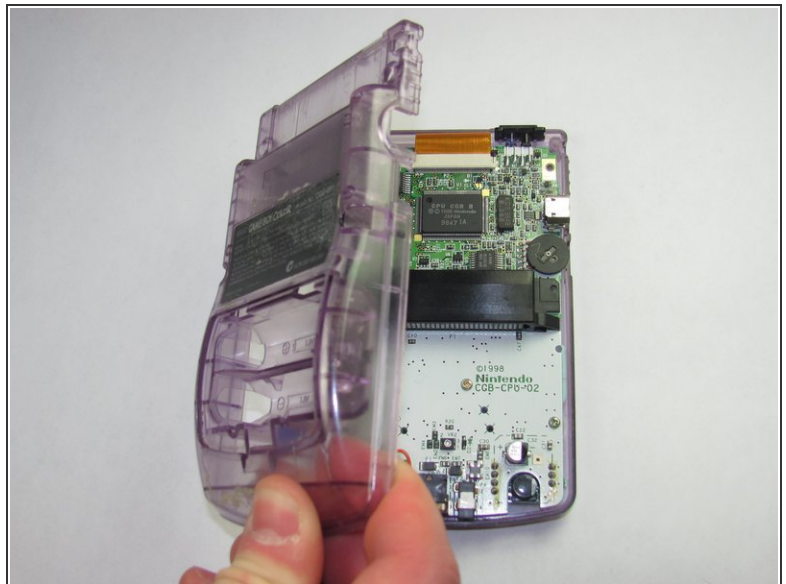


## Step 3 — Back Housing



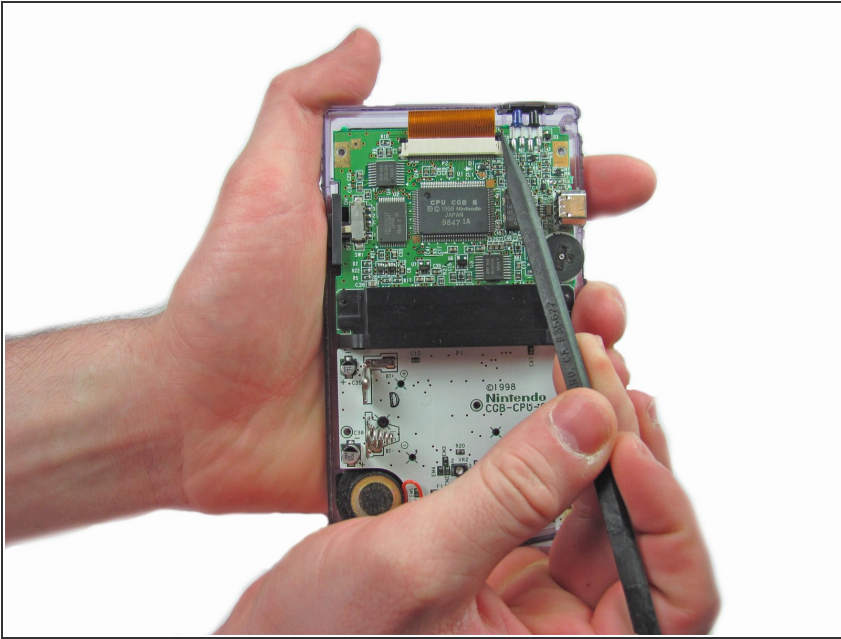
- Using a Y1 screwdriver, remove the six screws on the back of the device as pictured. The bottom two screws are located inside of the battery compartment.

## Step 4



- Gently lift and separate the back housing from the rest of the device. Now you've got the back housing out!

## Step 5 — LCD Ribbon Cable



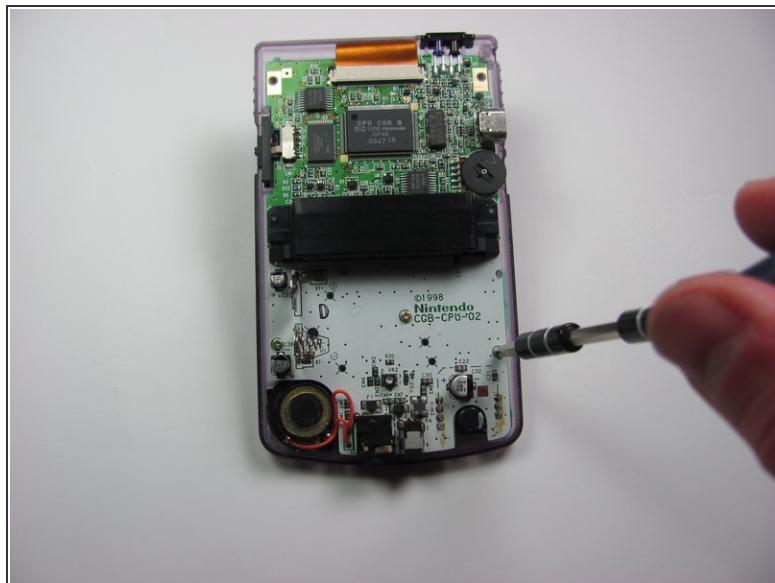
- Push up on the tabs on either side of the ribbon with a spudger.

## Step 6



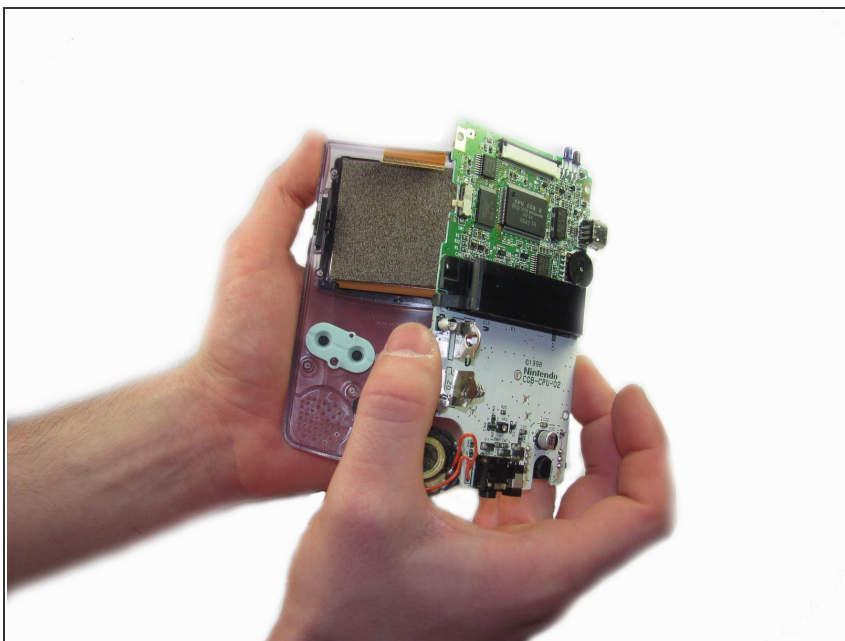
- Gently remove the ribbon cable from the port

## Step 7 — Motherboard



- Using the Phillips #1 screwdriver, remove the 3 screws shown in the picture.

## Step 8



- Gently lift the motherboard from the front housing.



## Step 9 — Buttons



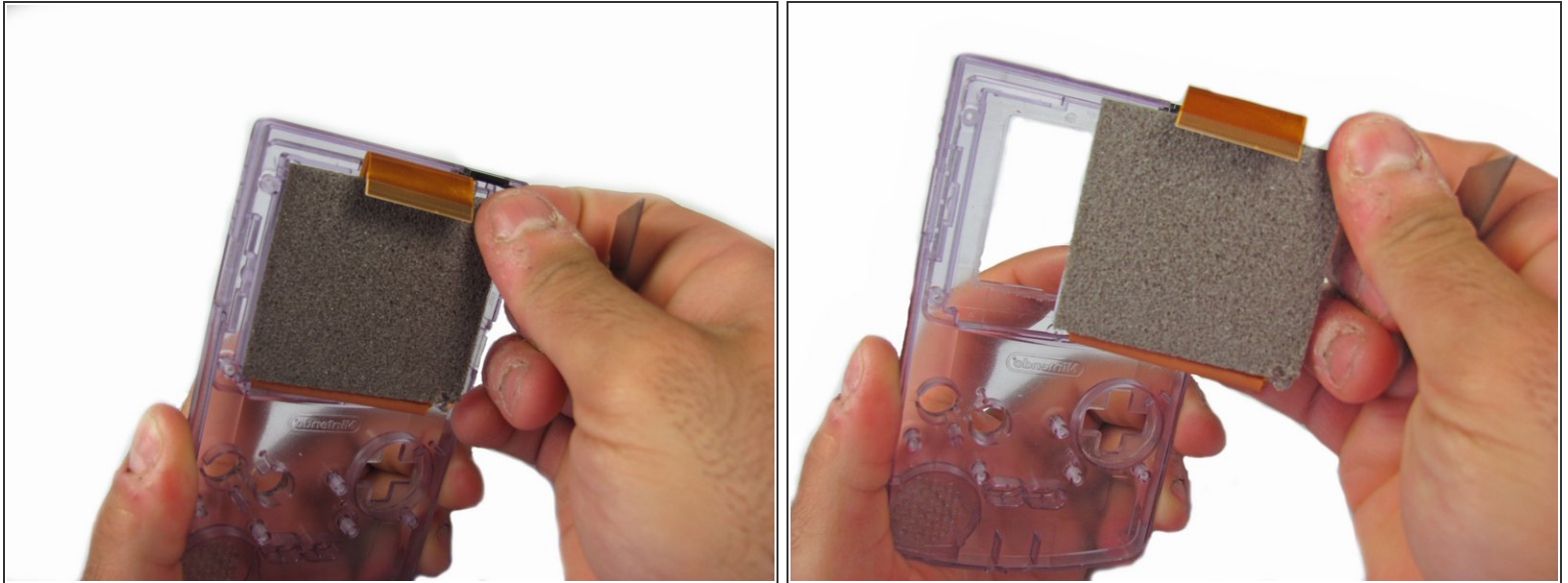
- Remove the rubber backing on each button grouping.

## Step 10



- Remove the original buttons from the housing.

## Step 11 — LCD Display



- Gently pry and lift the LCD Display from the front panel.
  - ⓘ Twisting the front casing may help gain more leverage.

To reassemble your device, follow these instructions in reverse order.